



RTPI
Royal Town Planning Institute

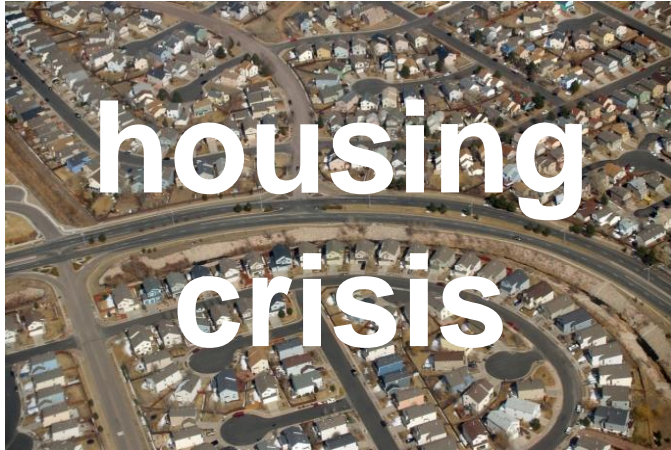
Smart city-regions

James Harris

Policy and Networks Manager

RTPI

planning: part of the solution



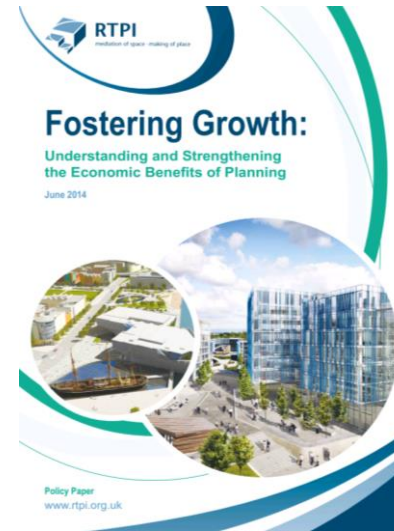
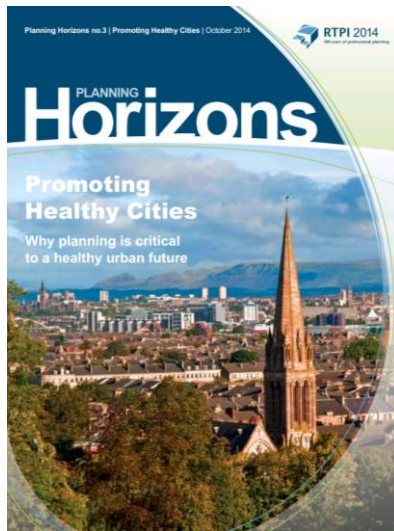
planning: part of the solution



Planners could build a better Britain – given the chance
Rowan Moore

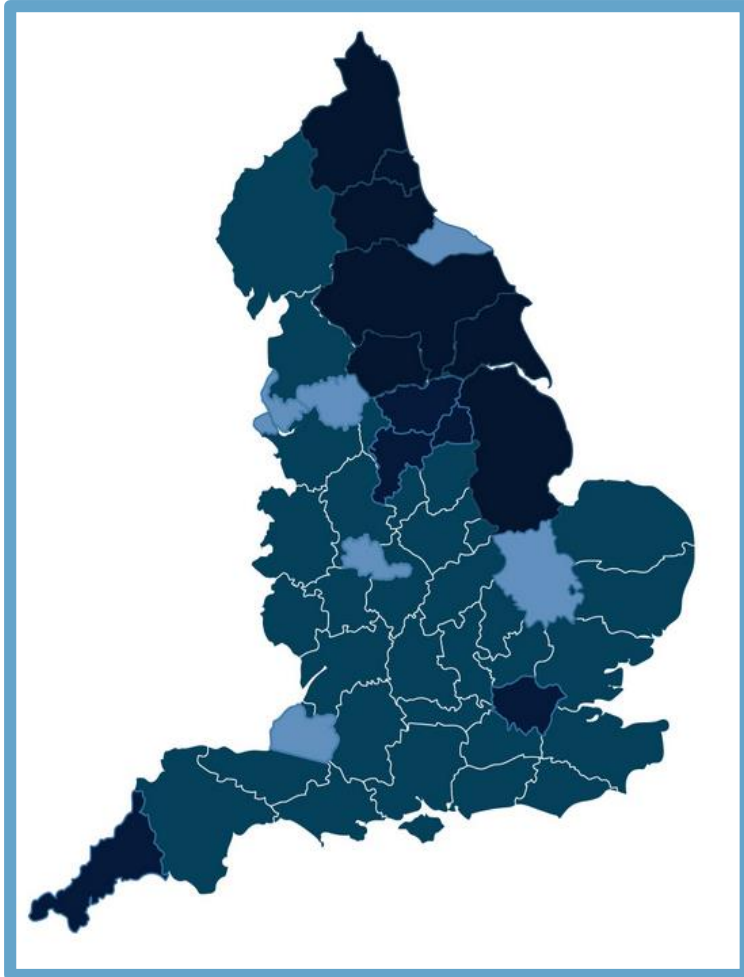


A new report points out the benefits of listening to planners' ideas instead of denigrating them



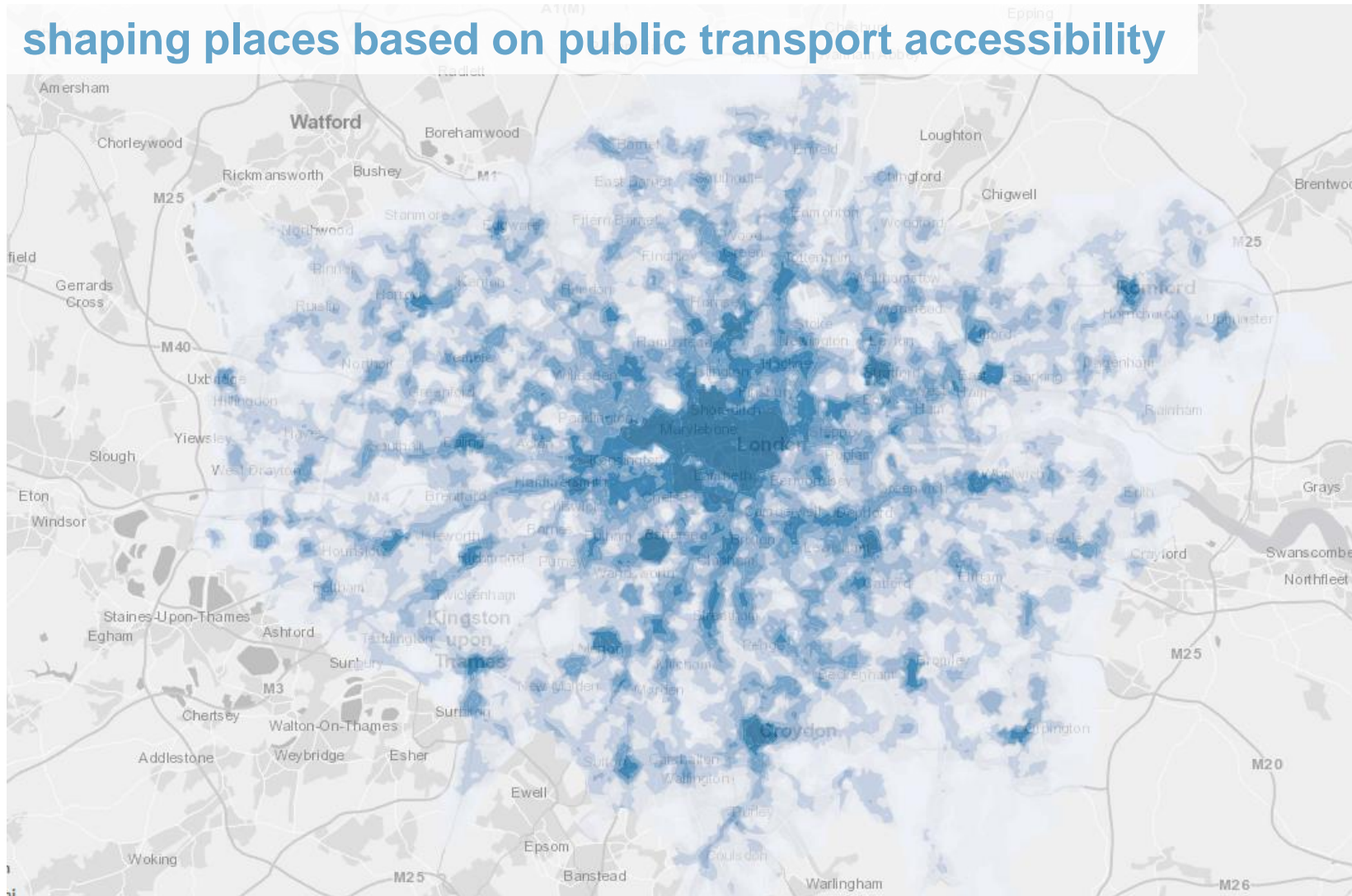
**ENGLAND'S
GREAT
PLACES**

when devolution meets smart cities



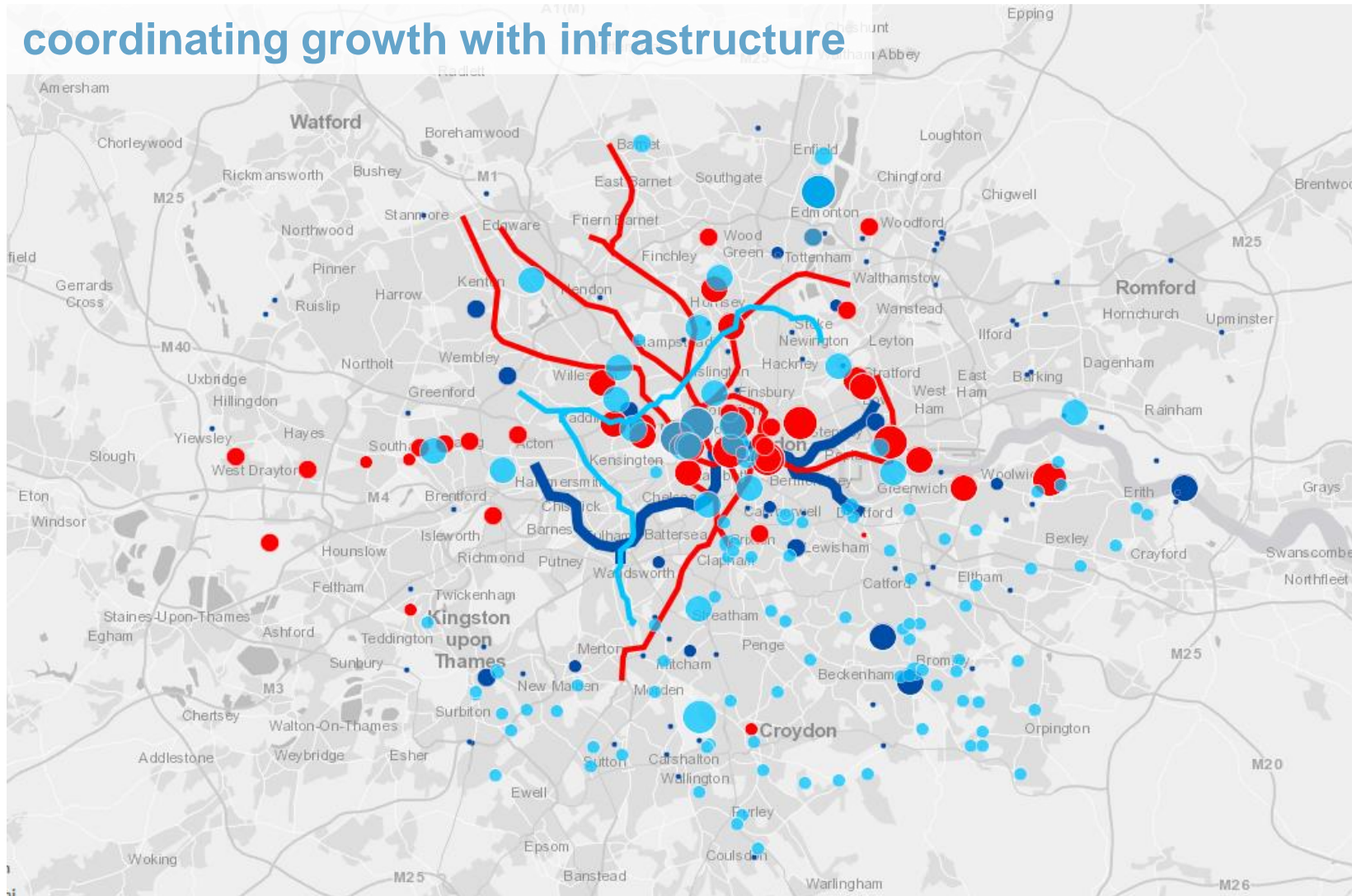
when devolution meets smart cities

shaping places based on public transport accessibility



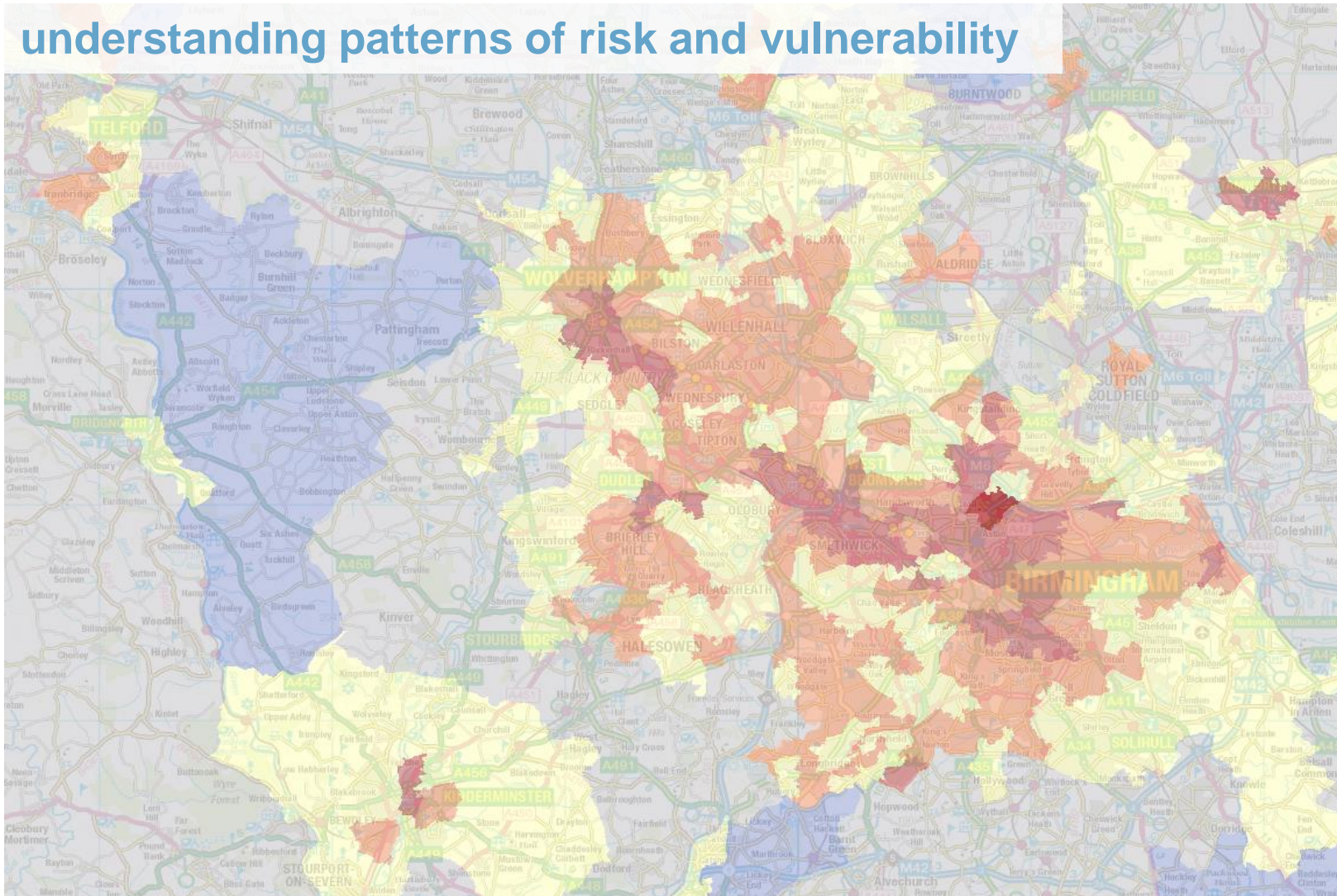
when devolution meets smart cities

coordinating growth with infrastructure



when devolution meets smart cities

understanding patterns of risk and vulnerability



when devolution meets smart cities

engaging the public in strategic plan-making



from smart cities to smart city-regions

How can planners use data, technology and new ways of working to make city-regions more productive, equitable and sustainable?

- *Develop plans which cross geographies and sectors*
- *Coordinate growth with low-carbon infrastructure*
- *Measure wider social, environmental and economic impacts*
- *Engage the public in strategic decision-making*

from smart cities to smart city-regions

rtpi.org.uk/smartcityregions

What can we offer?

A platform for case studies / blogs

Help shaping your dissertation proposal

Connections with the right people

Ways to promote your research

Get in touch: james.harris@rtpi.org.uk



RTPI

Royal Town Planning Institute