

Associate membership

A-APC & EP-APC¹

Key differences to the L-APC (June 2019 Guidance)

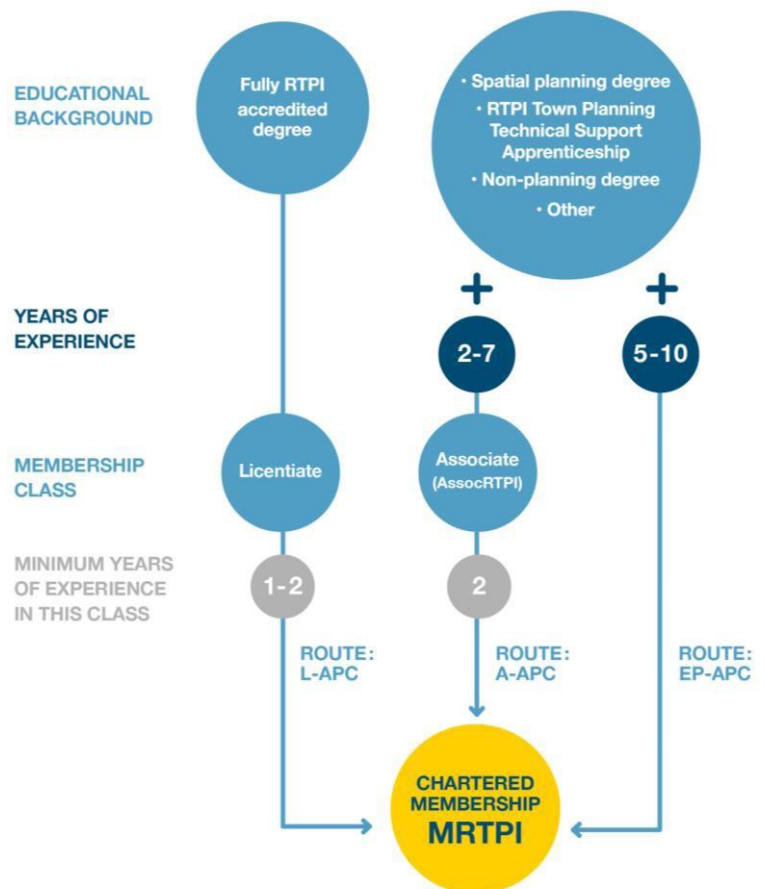
Associate membership (AssocRTPI)

The membership class for professionals working in a related discipline or planners without a fully RTPI accredited degree.

1. Experience requirements **vary from 2-7 years** depending on the qualification held.
2. As a candidate you need to demonstrate, at a minimum, a working understanding of the planning system and **engagement with spatial planning**.
3. As a candidate you **do not need to complete a Reflective Journal** to become an Associate (though to progress to Chartered through the A-APC you will).
4. There are 7 **competencies** (3 less than the L-APC), and most need to be evidenced at a lower type:
 - C1. Professional ethics and the RTPI Code of Conduct (Core)
 - C2. The spatial planning context (Understanding)
 - C7. The legal framework (Awareness)
 - C8. Politics in planning (Awareness)
 - C9. Economics in planning (Awareness)
 - C10. Reflection and review (Understanding)
 - C11. Sustainability and climate change (Awareness)

5. It is a **4,000 word written submission** (+/-10%). 1-2 case studies are required for the Professional Competence Statement (PCS).

Full details: www.rtpi.org.uk/associate



¹ A-APC = Associate Assessment of Professional Competence.
EP-APC = Experienced Practitioner Assessment of Professional Competence.
L-APC = Licentiate Assessment of Professional Competence.



RTPI

Royal Town Planning Institute

Chartered membership via A-APC (MRTPI)

The route for Associate members (that are not eligible for the EP-APC).

1. Experience requirement is **2 years as an Associate member**.
2. There are **3 more competencies** than the L-APC, the additional competencies are:
 - C11. Sustainability and climate change
 - C12. Community engagement, participation and equality
 - C13. Specialist knowledge and planning theory
3. As part of C13. *Specialist knowledge and planning theory*, candidates need to **link planning theory to their case study**, demonstrating an understanding of the principles behind your specialism (you may want to undertake further reading for this).
4. It is a **7,000 word submission** (+/-10%). **2-4 case studies** are required for the Professional Competence Statement (PCS).

Full details: www.rtpi.org.uk/aapc

Chartered membership via EP-APC (MRTPI)

The route for planners with extensive experience.

1. Experience requirements **vary from 5-10 years** depending on the qualification held.
2. As a candidate you do not have to be a member of the Institute before applying (though Licentiates and Associates can apply through this route if they meet requirements).
3. As a candidate you **do not need to complete a Reflective Journal**; instead, submit **5-10 examples of your professional work** to support the claims in the written submission.
4. There are **3 more competencies** than the L-APC, the additional competencies are:
 - C11. Sustainability and climate change
 - C12. Community engagement, participation and equality
 - C13. Specialist knowledge and planning theory
5. As part of C13. *Specialist knowledge and planning theory*, candidates need to **link planning theory to their case study**, demonstrating an understanding of the principles behind their specialism (you may want to undertake further reading for this).
6. It is a **7,000 word submission** (+/-10%). **2-4 case studies** are required for the Professional Competence Statement (PCS).
7. As a candidate with significant strategic level experience, you have the **option to complete C14. Leadership in planning²** and **omit the following competencies**:
 - C3. Identifying and analysing issues
 - C4. Gathering appropriate information
 - C5. Identifying and assessing alternative courses of action
 - C6. Initiating and implementing a course of action

Full details: www.rtpi.org.uk/epapc

² If unsure whether your experience makes you eligible to take this optional competency, you are advised to take the 'standard' EP-APC route and complete C1-C13.