

Local Energy Planning

Chair:

Cheryl Hiles, Sector Director Energy and Environment,
Pell Frischmann

Agenda

- 15.15 Round table introductions
- 15.30 What do we mean by local energy planning?
Presentation by Hazel Williams from Regen
- 15.50 Key learning from a case study of local area energy planning, presentation by Mike Jenkins from Bridgend Council
- 16.00 Overcoming barriers to local area energy planning: group discussions
- 16.15 Feedback, questions and panel response
- 16.30 Close

Local energy planning

21 May 2019



RTPI

Chartered Town Planners

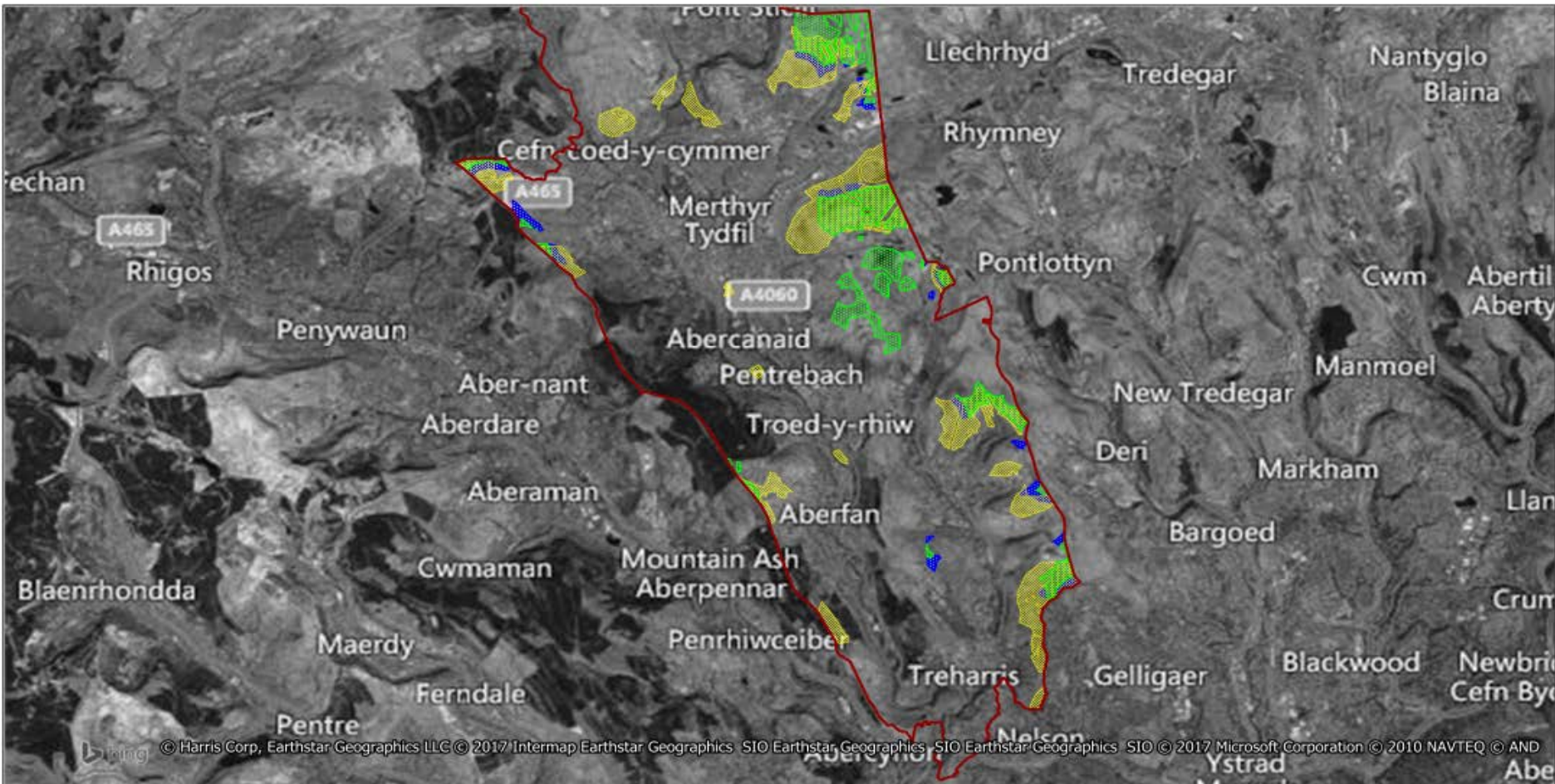
regen 
transforming energy

Climate imperative



Local planning authorities are bound by the legal duty set out in Section 19 of the 2004 Planning and Compulsory Purchase Act, as amended by the 2008 Planning Act, to ensure that, taken as whole, plan policy contributes to the mitigation of, and adaptation to, climate change.



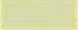

Resource assessment and energy opportunity mapping



Title:
Areas for strategic stand-alone renewable energy development

Project ref:
Merthyr Tydfil Renewable energy assessment

Date:
10/02/2017

Key	
Merthyr Tydfil boundary	Unconstrained 2MW wind potential sites
	
Unconstrained solar potential sites	Unconstrained 500kW wind potential sites
	

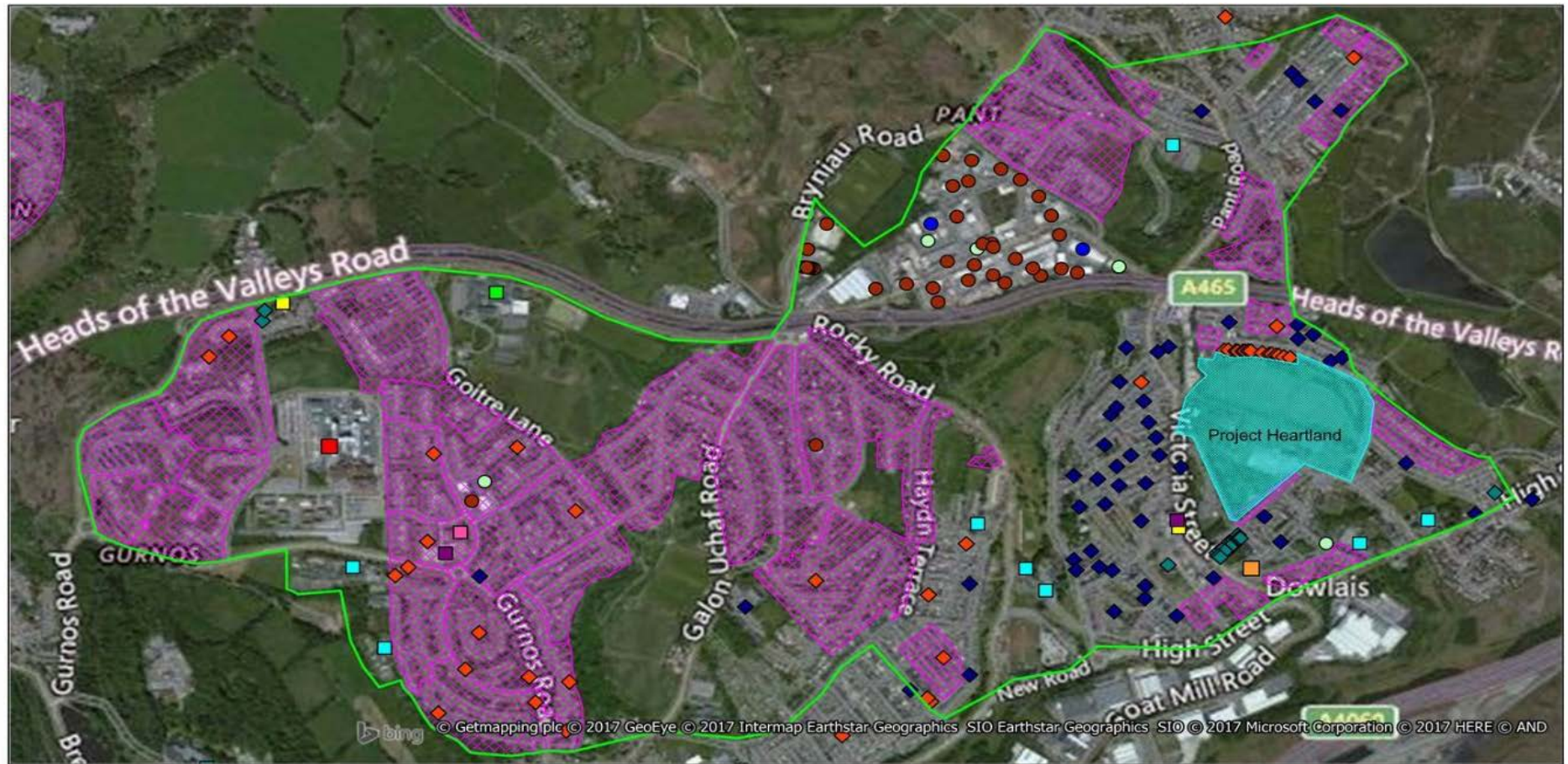


delivering sustainable energy

Regen SW
Innovation
Centre
Rennes Drive

01392 494399
www.regensw.co.uk
admin@regensw.co.uk

District heat network assessment



Title:
**Heat opportunities mapping:
 District Heat Network Area 1**

Project ref:
**Merthyr Tydfil Renewable
 energy assessment**

Date:
 01/02/2017

Property Types		Social Housing	Area 1
Hospital	Primary schools, day care centres	Hafod Housing	Potential development area Project Heartland
Office	Colleges and high schools	Wales and West Housing	
Care homes	Factories and manufacturing	Merthyr Tydfil Housing Association	
Leisure centre	Fire, police and ambulance services	Merthyr Valley Homes	
	General commercial		



regensw
 delivering sustainable energy

Regen SW
 Innovation
 Centre
 Rennes Drive

01392 494399
 www.regensw.co.uk
 admin@regensw.co.uk

Energy planning to date

Uses

- Allocation of areas
- Development of capacity targets
- Setting low carbon development standards
- Identification of own estate opportunities

Scales

- Individual developments
- Neighbourhood Plans
- Local Plans
- Joint Spatial Strategies

The energy system is changing



A whole system approach is needed



Whole system energy planning

Key components

- Engaging stakeholders:
 - DNOs, GDNOs
 - Developers
 - Communities
- Setting a target
- An integrated approach
- Local data
- Linked to delivery

Local Area Energy Planning: Outline process



Planning for Smart Energy

Due to be published on 18 July 2019 at
the RTPI SW conference



Pell Frischmann
Excellence through innovation

regen 
transforming energy

UWE
Bristol | University
of the
West of
England

THE **Landmark**
PRACTICE

Thank you

Regen, Bradninch Court, Castle St, Exeter, EX4 3PL
T: 01392 494 399



Bridgend County Borough Council

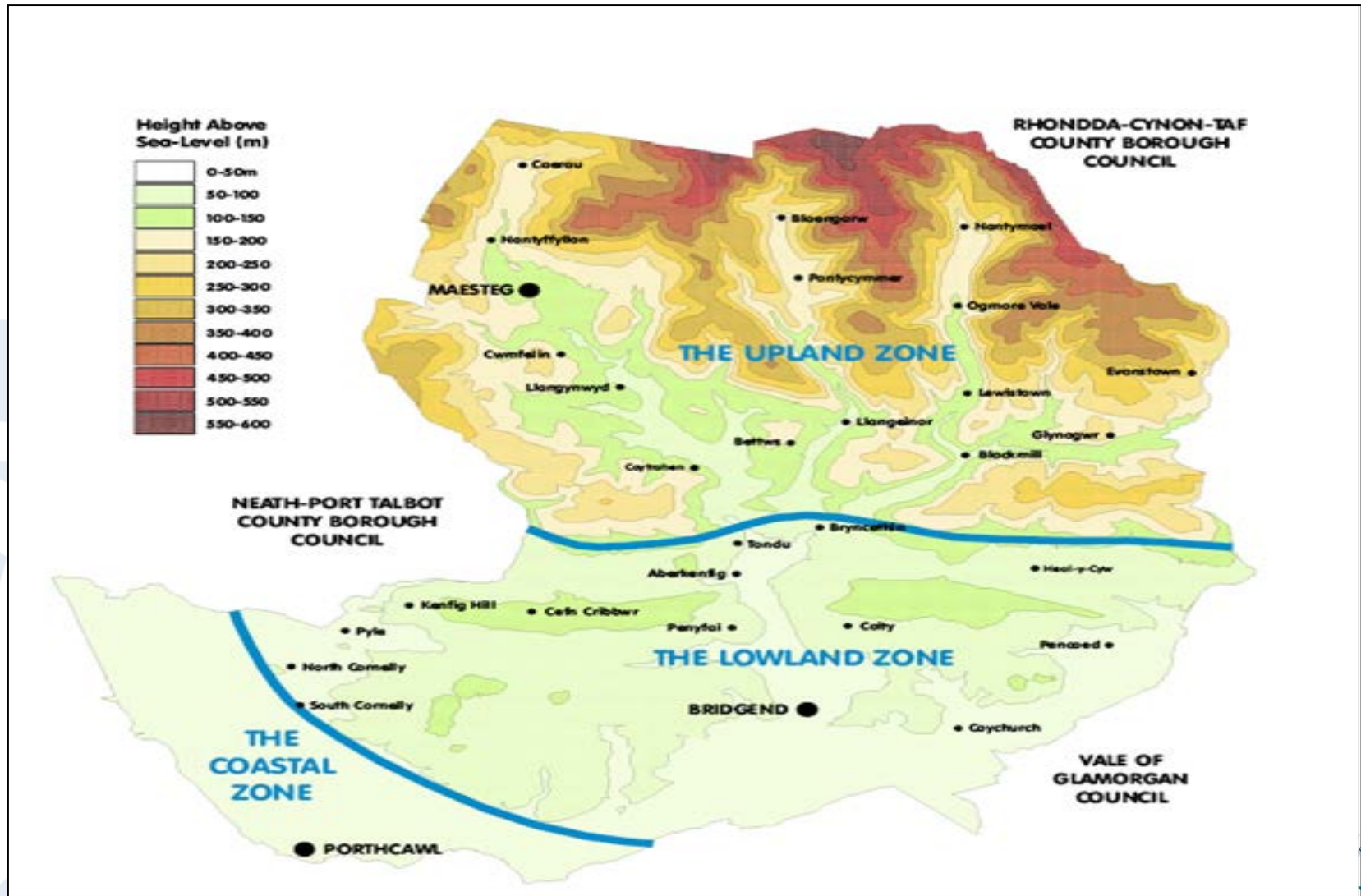
Cyngor Bwrdeistref Sirol Pen-y-bont ar Ogwr



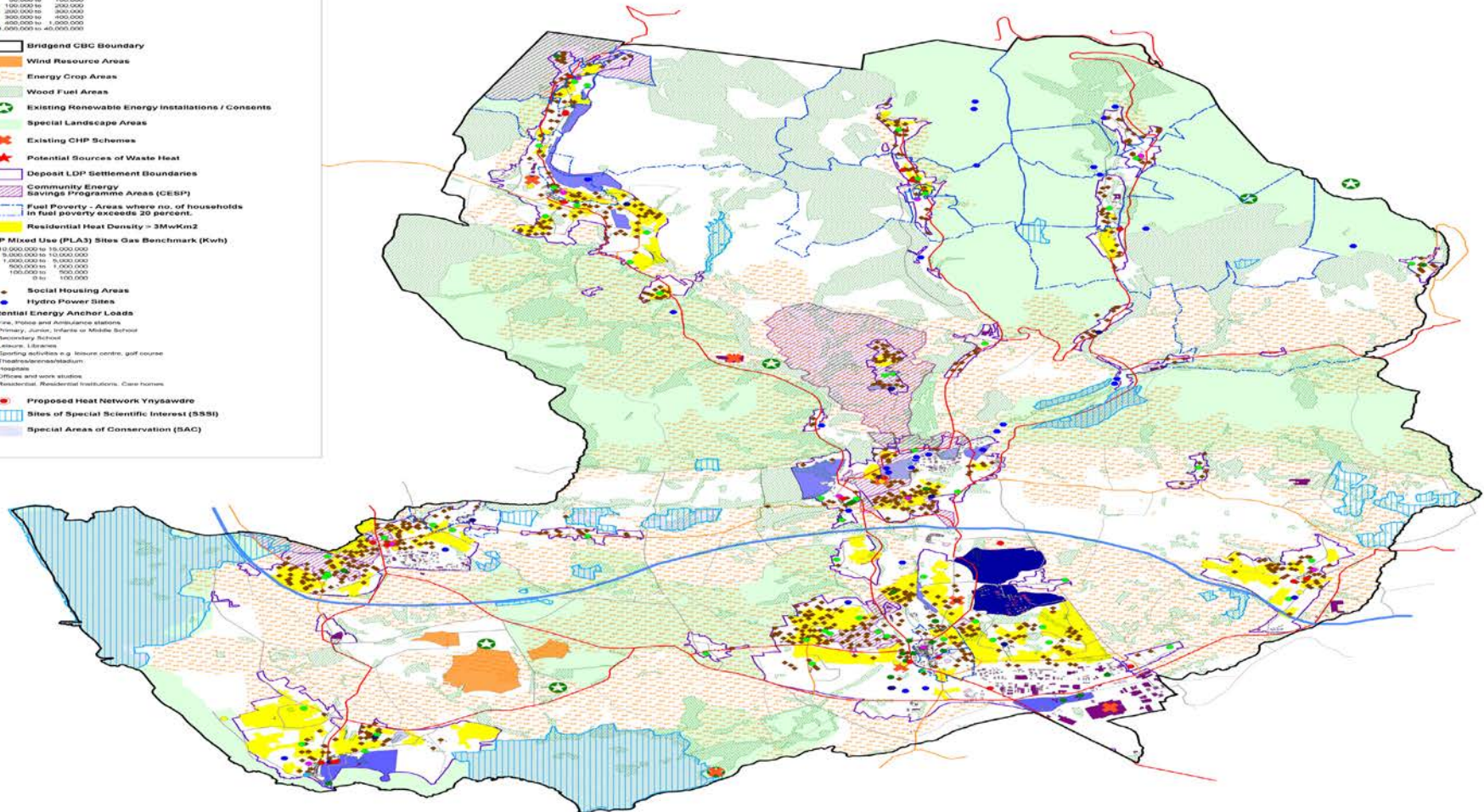
Local Area Energy Planning in Bridgend County Borough

Dr Michael Jenkins

Bridgend County Borough



Energy Opportunities Plan

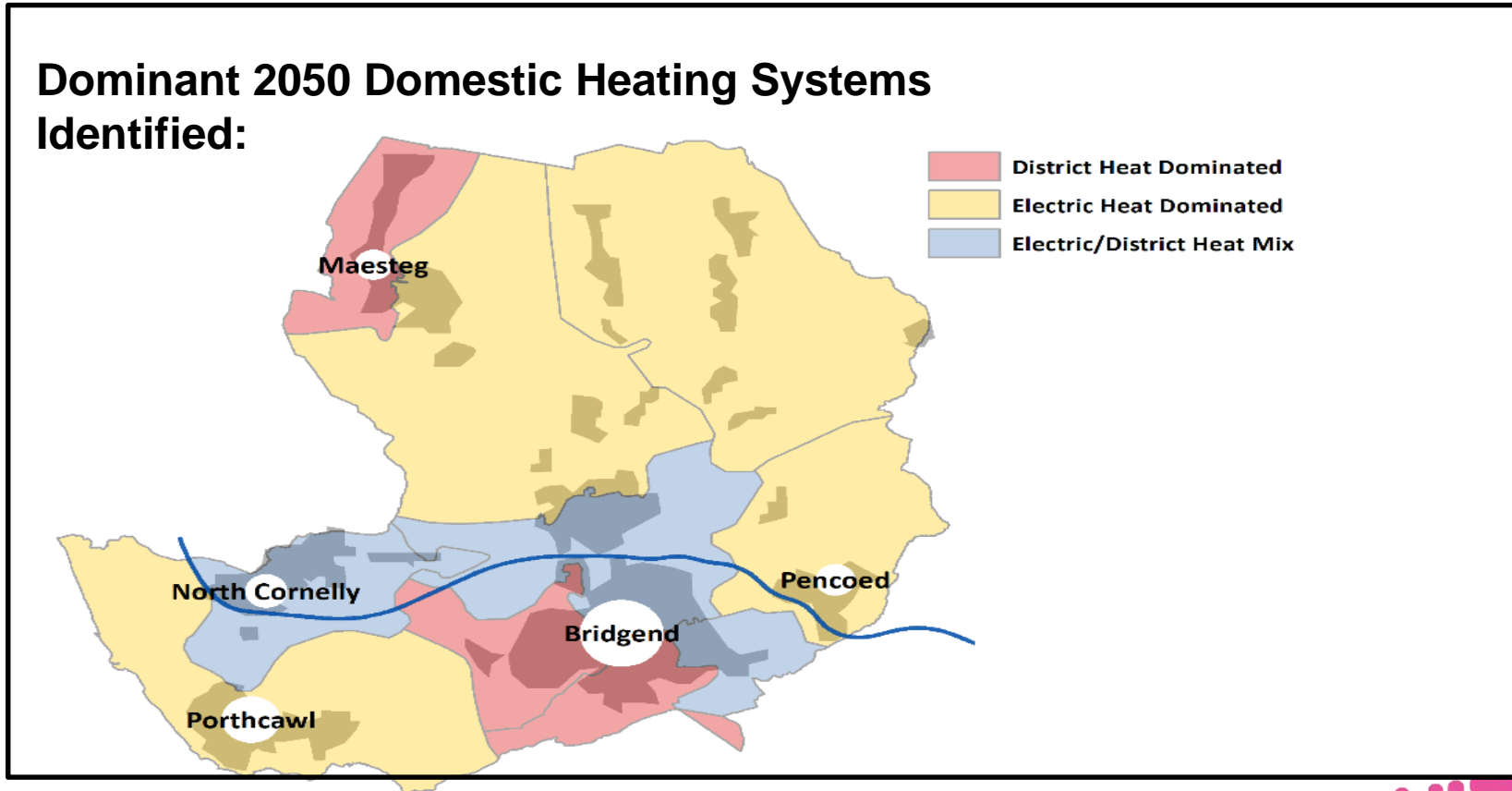


Developing a Local Area Energy Strategy

- **Data (National & Local)**
- **Partnerships**
- **Time**
- **Expectations**

Local Area Energy Strategy

Dominant 2050 Domestic Heating Systems Identified:

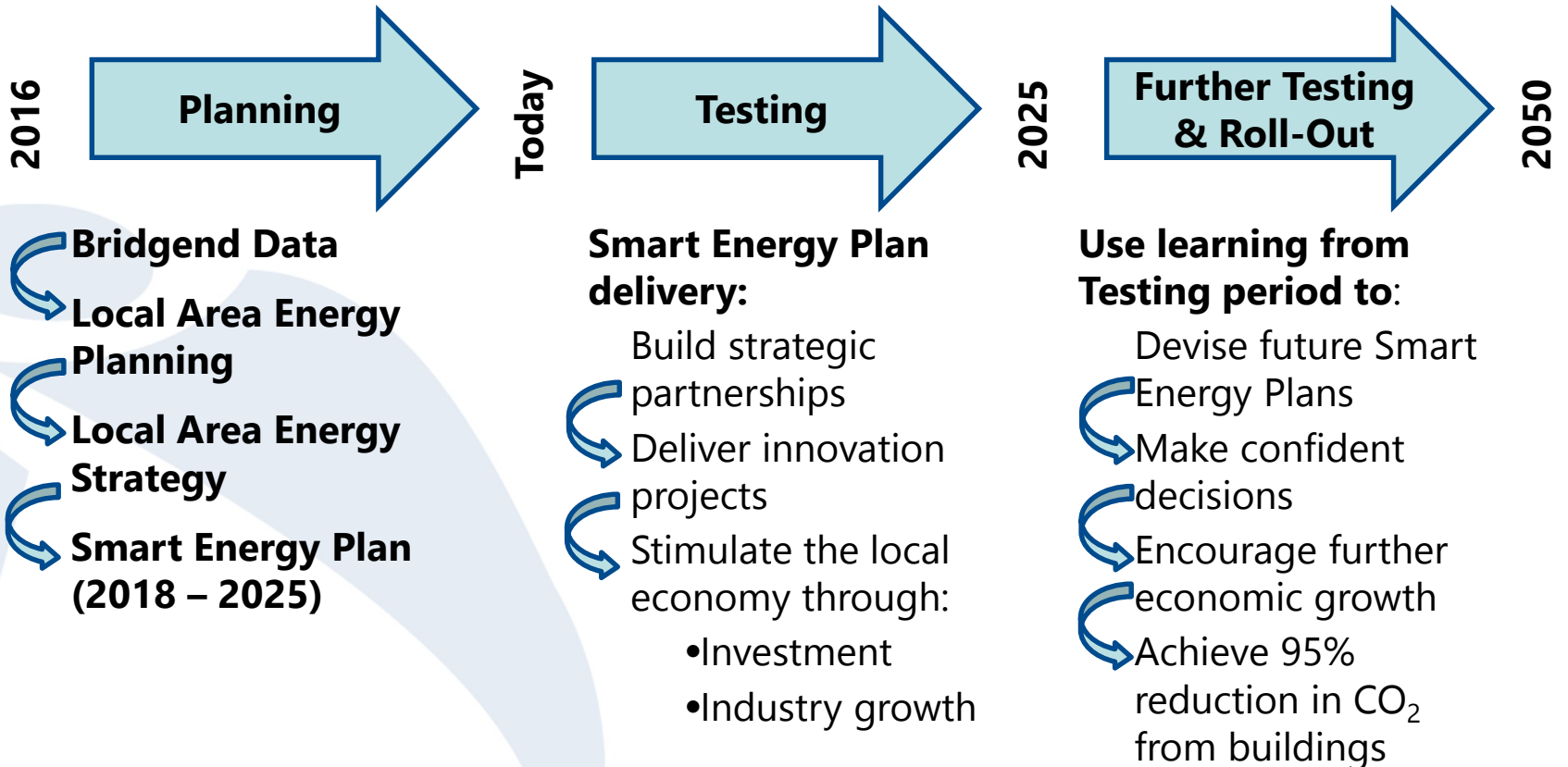


(OS data © Crown copyright and database right 2018)

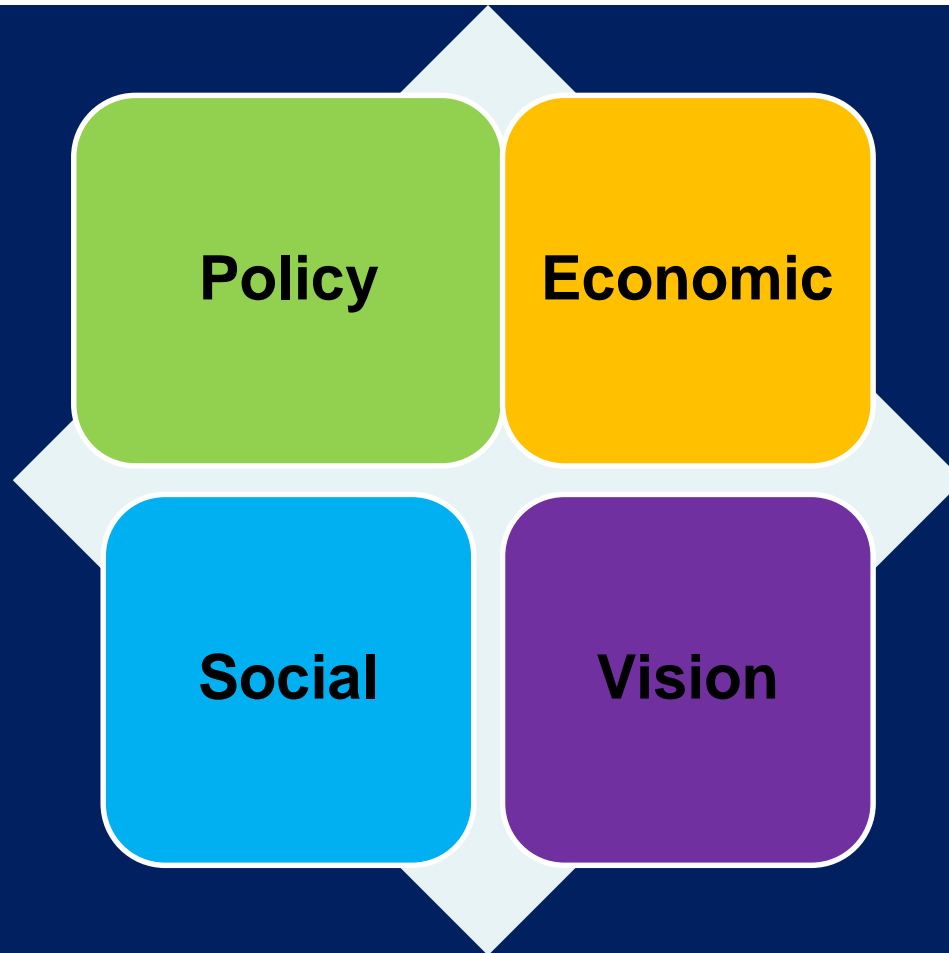
CATAPULT
Energy Systems



Local Area Energy Strategy



Benefits of Local Area Energy Planning





Thank you for listening

Michael.Jenkins@bridgend.gov.uk

Overcoming barriers to local energy planning: Group discussions

- Please rank the barriers to local energy planning as you see them, starting with 1 ranking as the biggest barrier
- On your tables, please look at the barrier you have been allocated and discuss the solutions tabled in front of you
 - Would any of these help?
 - What else would be needed?
- After 15 minutes, please feedback:
 - One overarching thought about each potential solution
 - One better idea and who should be responsible for implementing it
 - Any questions you have for the panel