

# Implementing the Master Plan for Poole Harbour



Presented by Phil Armstrong BEng CEng MICE  
Harbour Engineer, Poole Harbour Commissioners

# Poole Harbour Commissioners

- **Poole Harbour Commissioners (PHC)**

PHC is a Trust Port, which means it is an independent statutory body. The Commissioners are the Managers of Poole Harbour & Trustees of the Port of Poole.

The Trust Port was established by an Act of Parliament in 1895 to conserve, regulate & improve the Port & Harbour of Poole. PHC currently comprise a board of 12 Trustees (Commissioners) with a staff of some 110

- **Trust Ports**

Trust Ports hold a unique place in the UK ports industry, there are no shareholders or owners and any surplus is invested back into the Harbour and port operations for the benefit of the stakeholders of the trust.

- **Stakeholders**

Consist of those who use the Harbour and Port, its employees and individuals, organisations and groups having an interest in the operation of Poole Harbour

- **PHC Jurisdiction**

The Commissioners' jurisdiction covers the entire water area of the Harbour up to MHWS level, including the main approach channel outside. PHC are the Competent Authority under Habitat Regulations

# Commissioners Responsibilities

- Ensuring that statutory duties are fulfilled
- Maintaining the shipping channels
- Providing a pilotage service
- Allocating areas of Harbour for yacht moorings
- Licensing works around the Harbour (e.g. jetty & slipway construction)
- Providing emergency response management / plans / resources
- Providing a 24hr manned Harbour Control office
- Maintaining and developing Port facilities
- Offering a full range of cargo handling services
- Enforcement of Harbour byelaws / review of Harbour byelaws
- Taking account of the requirements / addressing the obligations placed upon the Commissioners by environmental legislation
- Ensuring the safety of harbour users and employees

PHC ensure that all the varied interests (COMMERCIAL - RECREATIONAL - ENVIRONMENTAL) operate in harmony, for the long term sustainability of the whole Harbour and its stakeholders.



# Poole Harbour

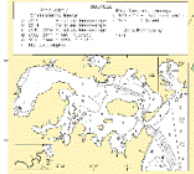
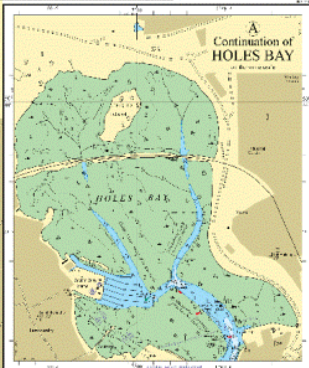
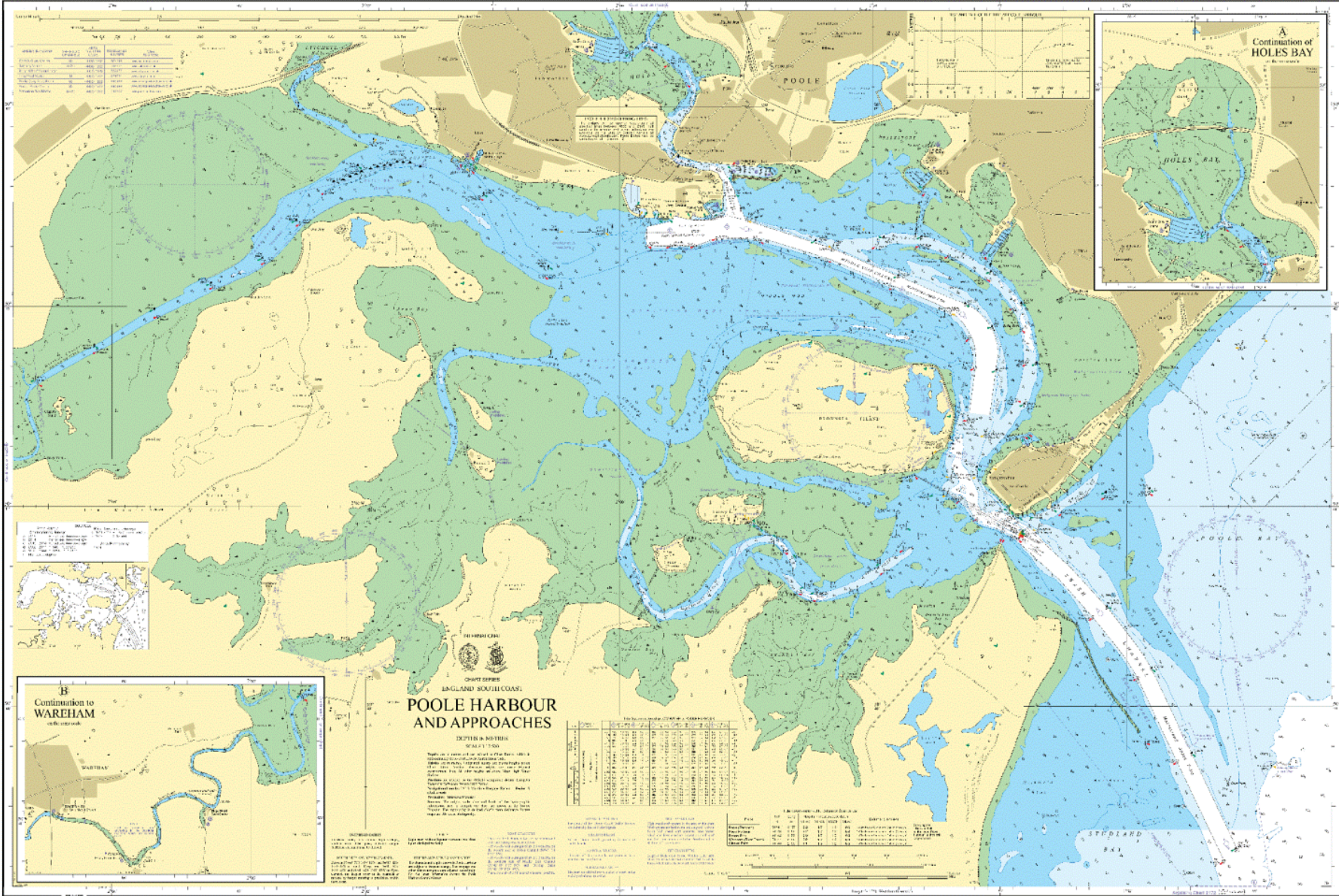
2611

INT 1728

WGS84

UNCLASSIFIED//FOR OFFICIAL USE ONLY (U//FOUO) - THIS INFORMATION IS UNCLASSIFIED EXCEPT WHERE SHOWN OTHERWISE. IT IS THE PROPERTY OF THE NATIONAL NAVY AND IS LOANED TO YOU. IT IS TO BE CONTAINED AND CONTROLLED AS A RESTRICTED DOCUMENT. IT IS TO BE CONTAINED AND CONTROLLED AS A RESTRICTED DOCUMENT. IT IS TO BE CONTAINED AND CONTROLLED AS A RESTRICTED DOCUMENT. IT IS TO BE CONTAINED AND CONTROLLED AS A RESTRICTED DOCUMENT.

UNCLASSIFIED//FOR OFFICIAL USE ONLY (U//FOUO) - THIS INFORMATION IS UNCLASSIFIED EXCEPT WHERE SHOWN OTHERWISE. IT IS THE PROPERTY OF THE NATIONAL NAVY AND IS LOANED TO YOU. IT IS TO BE CONTAINED AND CONTROLLED AS A RESTRICTED DOCUMENT. IT IS TO BE CONTAINED AND CONTROLLED AS A RESTRICTED DOCUMENT. IT IS TO BE CONTAINED AND CONTROLLED AS A RESTRICTED DOCUMENT. IT IS TO BE CONTAINED AND CONTROLLED AS A RESTRICTED DOCUMENT.



## POOLE HARBOUR AND APPROACHES

SCALE 1:50,000

DEPTH	DEPTH	DEPTH	DEPTH	DEPTH	DEPTH	DEPTH	DEPTH	DEPTH	DEPTH
1	2	3	4	5	6	7	8	9	10
11	12	13	14	15	16	17	18	19	20
21	22	23	24	25	26	27	28	29	30
31	32	33	34	35	36	37	38	39	40
41	42	43	44	45	46	47	48	49	50
51	52	53	54	55	56	57	58	59	60
61	62	63	64	65	66	67	68	69	70
71	72	73	74	75	76	77	78	79	80
81	82	83	84	85	86	87	88	89	90
91	92	93	94	95	96	97	98	99	100

**INTRODUCTION:** This chart is based on the latest available information and is subject to change without notice. It is the responsibility of the user to verify the accuracy of the information contained herein.

**NOTES:** 1. This chart is based on the latest available information and is subject to change without notice. 2. It is the responsibility of the user to verify the accuracy of the information contained herein.

**DETAILED NOTES:** 1. This chart is based on the latest available information and is subject to change without notice. 2. It is the responsibility of the user to verify the accuracy of the information contained herein.

NAME	CLASS	CHARACTERISTICS	HEIGHT	DIAMETER	DEPTH	REMARKS
1	2	3	4	5	6	7
8	9	10	11	12	13	14
15	16	17	18	19	20	21
22	23	24	25	26	27	28
29	30	31	32	33	34	35
36	37	38	39	40	41	42
43	44	45	46	47	48	49
50	51	52	53	54	55	56
57	58	59	60	61	62	63
64	65	66	67	68	69	70
71	72	73	74	75	76	77
78	79	80	81	82	83	84
85	86	87	88	89	90	91
92	93	94	95	96	97	98
99	100	101	102	103	104	105

# PHC Master Plan

## The Master Plan

- In 2011 Gov't requested Trust Ports to develop a Master Plan
- Strategic document which considers a number of wide ranging options for the future development of the Port
- PHC extensively consulted & Master Plan formally adopted in March 2013
- PHC decided to seek development consent for all of the elements in the Master Plan that relate to the modernisation of the commercial Port infrastructure

## Port Development

- The Port is a key supplier of employment and commercial opportunity in the Poole area. However, changes in market conditions have led to significant reductions in cargo and passenger traffic at the Port over the last 15 years.
- PHC recognise that the use of the Port will be compromised unless new and enhanced berthing facilities are provided

## Function of Development

The developments are designed to maintain & improve the Port's commercial viability by:

- Improving the Port's capacity and capability to deal with a range of shipping and marine activities
- Provide additional and deeper quays
- Reducing risk of exclusion from some markets / over-reliance on individual trade sectors
- Replacing ageing infrastructure

# Licences & Consents

## Development Consent (Harbour Revision Order)

PHC applied to the licensing authority, the Marine Management Organisation (MMO) for a Poole Harbour Revision (Works) Order under Section 14 of the Harbours Act 1964 relating to proposed development within the Port of Poole.

A draft application was submitted to the MMO in early 2014 with a full and final submission in late 2014

## Key Documents

The Key Documents submitted to the MMO consisted of:

- i. The Poole Harbour Revision (Works) Order 2014
- ii. The Statement of Justification
- iii. The Environmental Statement

## Marine Licensing

*Application submitted in parallel*

*Application included Construction & Environmental Management Plan (CEMP)*

# Environmental Impact Assessment (EIA)

- as required under European Directives
- The Environmental Statement (ES) provides info on the design of the development and alternatives considered
- The ES identifies any likely environmental impacts of the proposed development & how managed
- The ES provides information to the MMO in order that it can decide whether or not to give consent

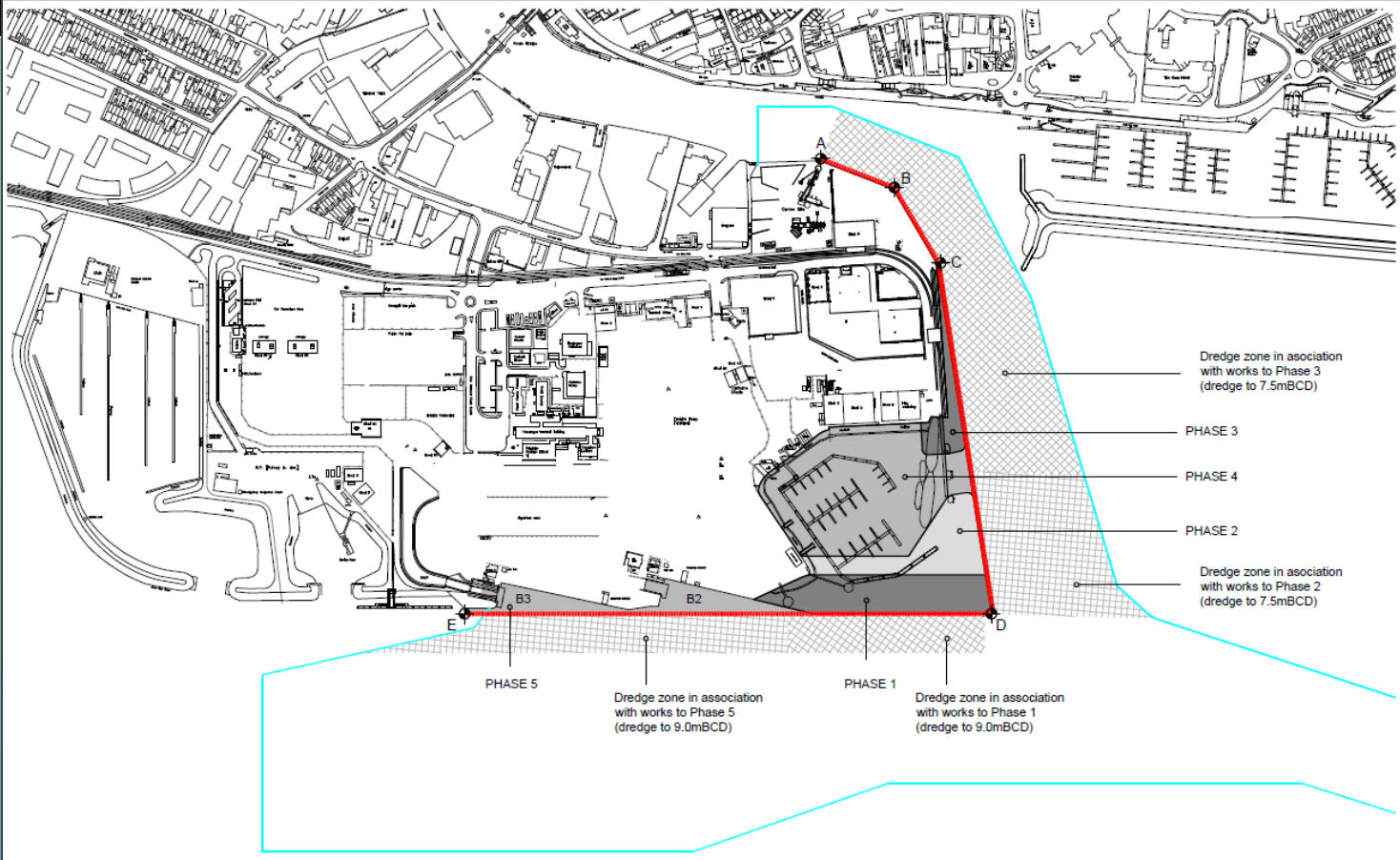
## The Environmental Statement

- Volume 1            Non Technical Summary
- Volume 2            Environmental Statement (Main Report)
- Volume 3            Figures
- Volume 4            Technical Annexes

# PHC Master Plan

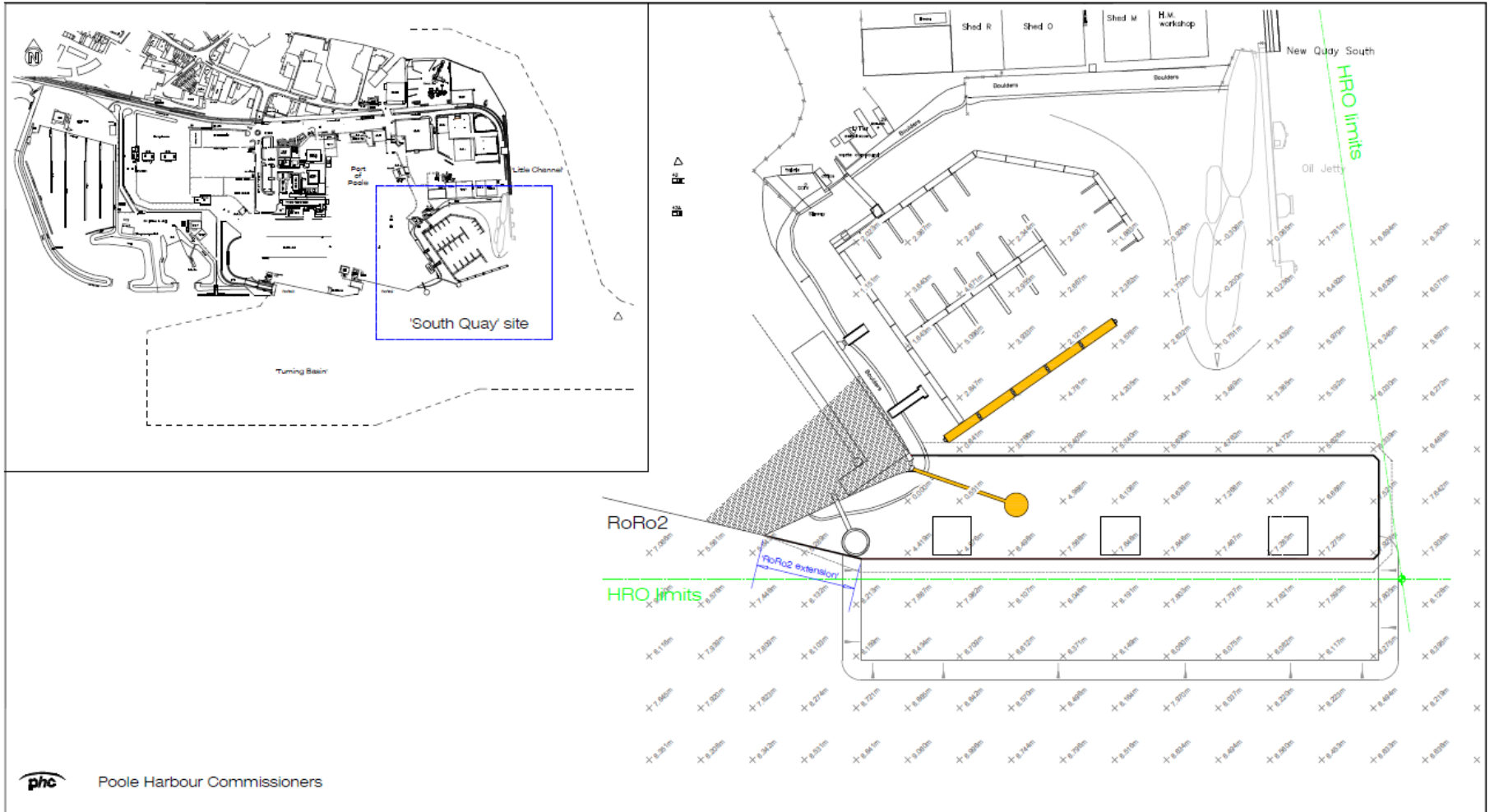


Extent of Port Development





# South Quay – Layout



# Diversification.....



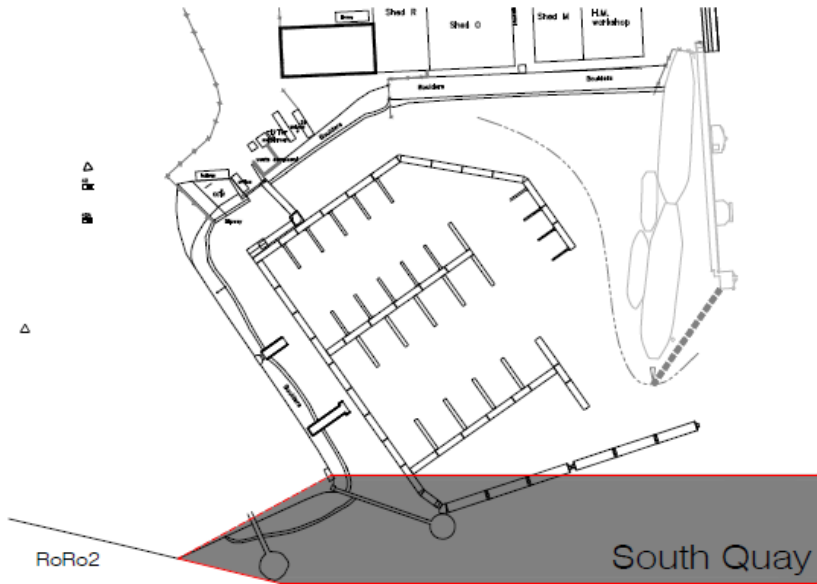
# Timeline.....

2013	Masterplan
2014	Environmental Statement Consent applications
2015	Consent approvals PHC Board approval to proceed with early Phases Tender & procurement stage commences Tender review / Contractor shortlisting Setback!
2016	Design re-evaluation / review Contractor negotiations / contractor selection Enabling works
2017	Construction phase
2018	Operation

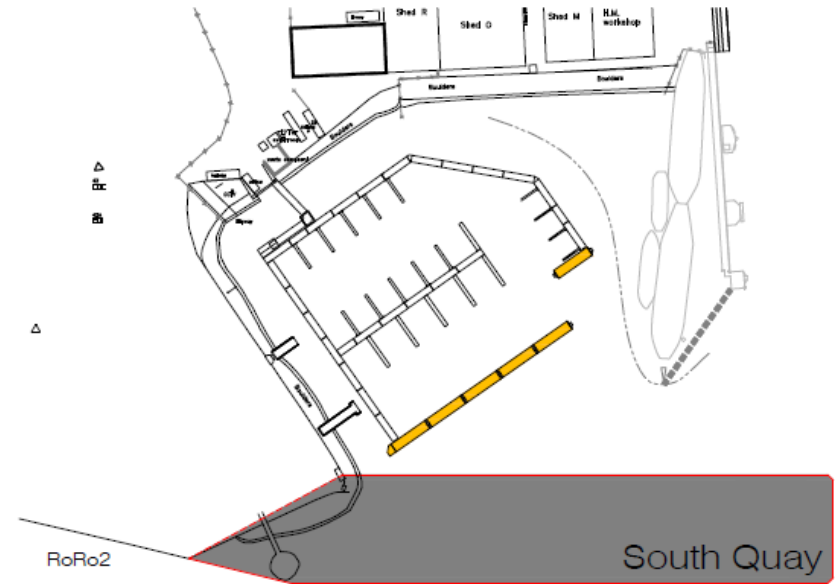
# The Site.....



# Preliminary Works – Layout



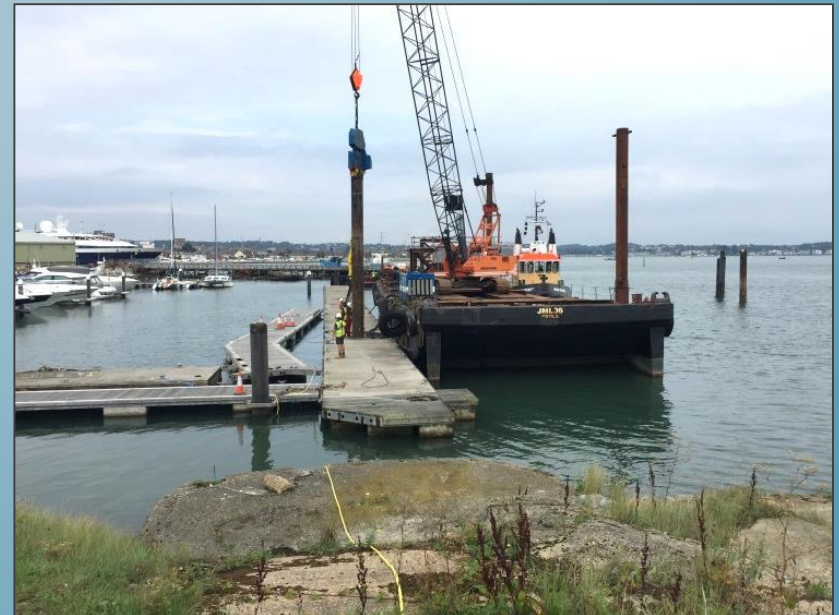
Port of Poole Marina  
Pontoon layout as existing



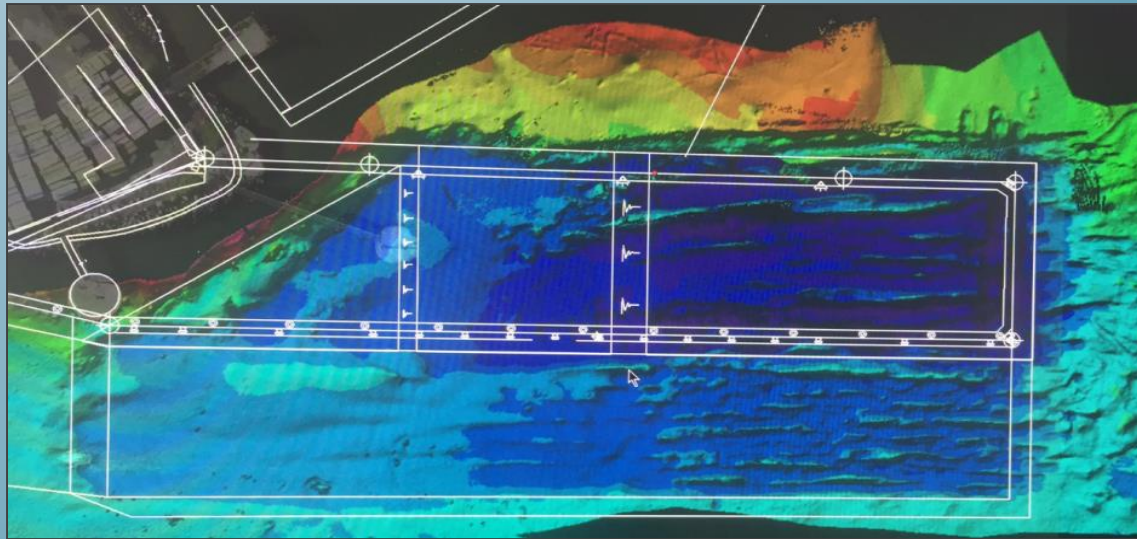
Port of Poole Marina  
Construction phase pontoon layout

- (1) Marina reconfiguration
- (2) Dolphin & wavescreen demolition
- (3) Dredging & bund
- (4) Port estate – services connections

# Preliminary Works.....



# Preliminary Works – Dredging & Bund



# Ballast Quay







# Construction activities



# South Quay Construction Timeline 2016-2017

Q4 - 2016



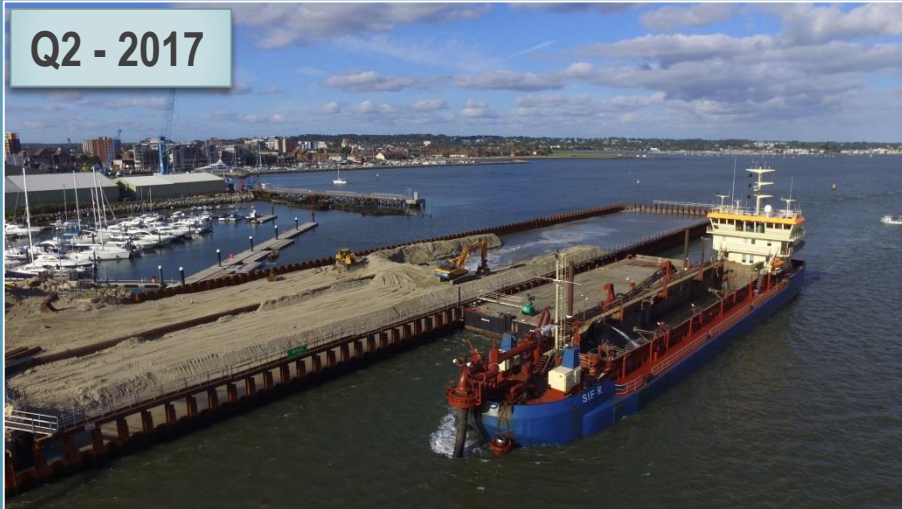
Q1 - 2017



Q4 - 2017



Q2 - 2017

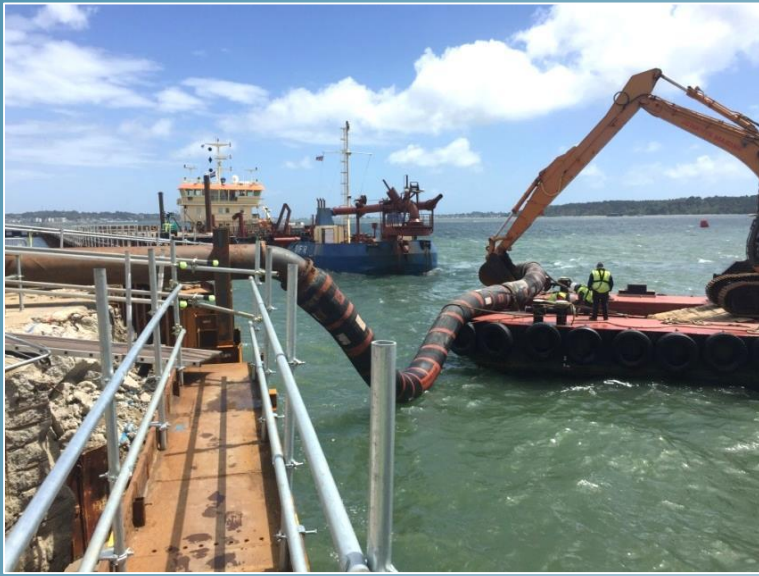


South Quay  
Construction Timeline  
2018

Q1 - 2018



# Construction challenges



# Construction challenges....



# A working quay.....



# Next steps.....

- Continue to react and adapt to both current & future trends in the Ports Industry
- Review of key activities
- Progress with and update the MasterPlan

