

Greenhouse Gas Assessment and Mitigation at Minerals Sites

Paul Evans CEnv MEI – Service Area Director @ Wardell Armstrong

Our Climate services

Streamlined Energy and Carbon Reporting (SECR)

Voluntary Carbon Reporting

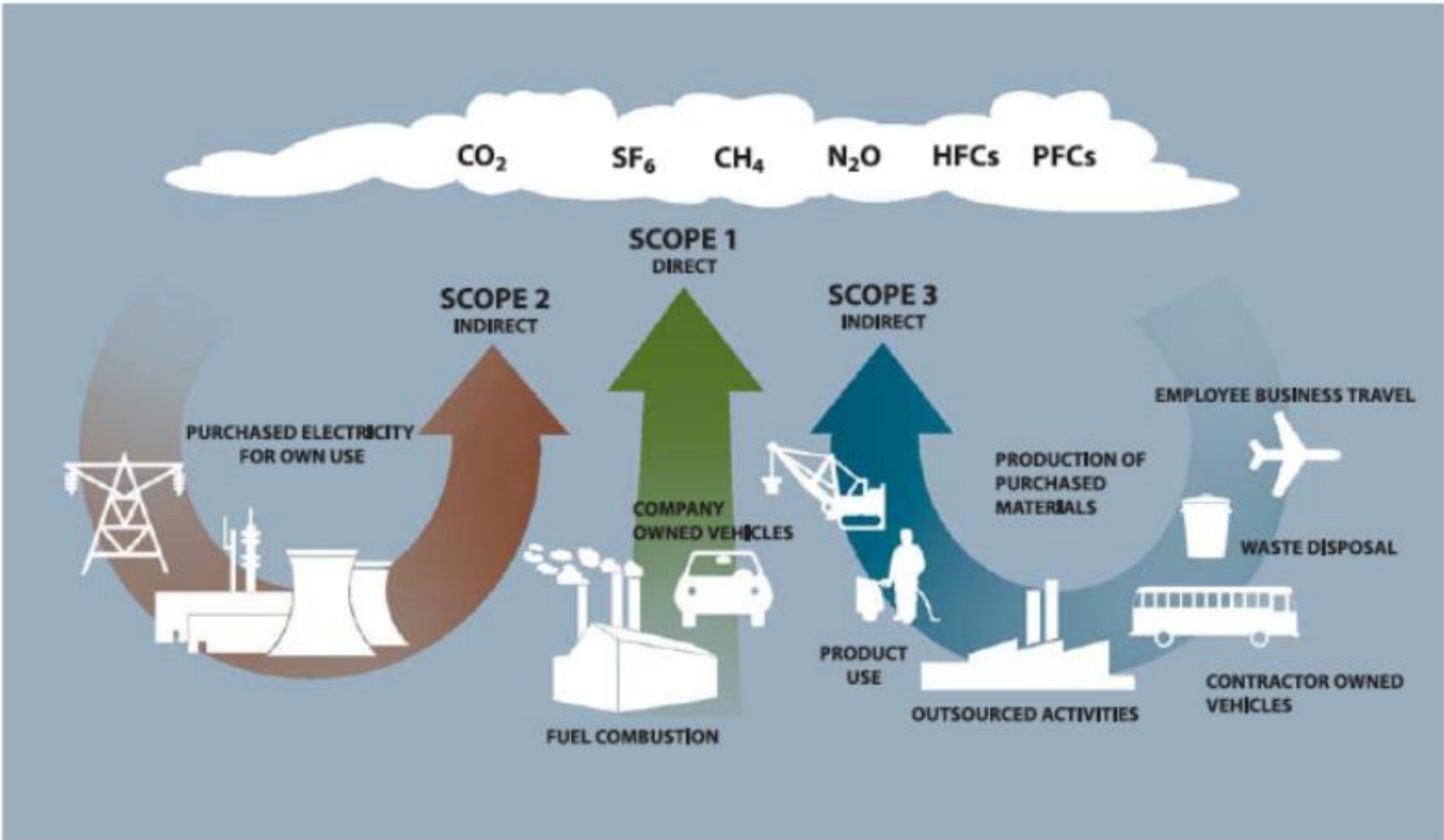
Environmental and Social Governance (ESG) Reporting

Climate change risk assessments

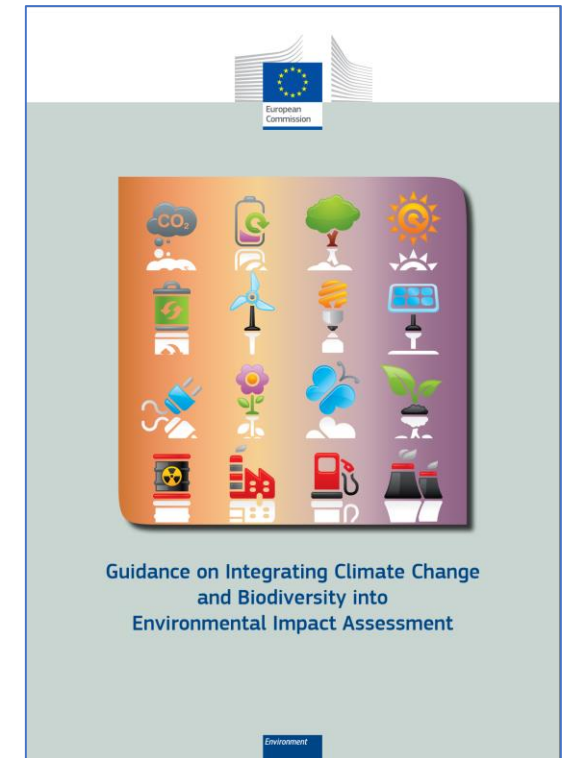
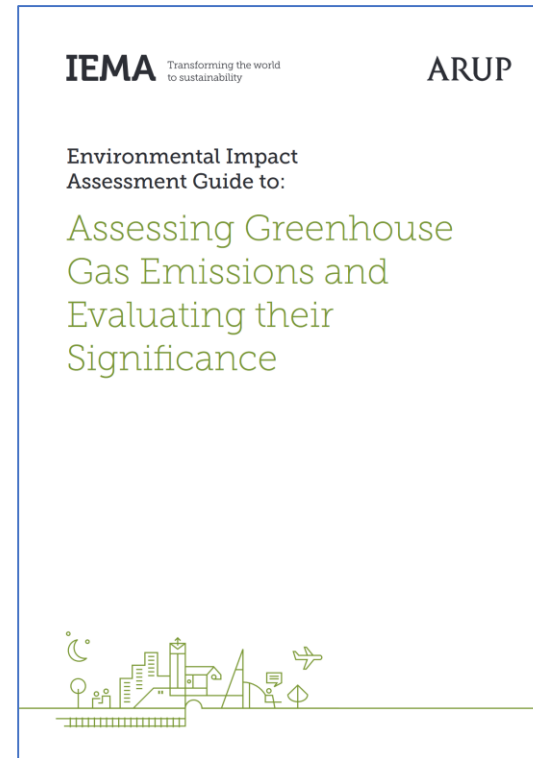
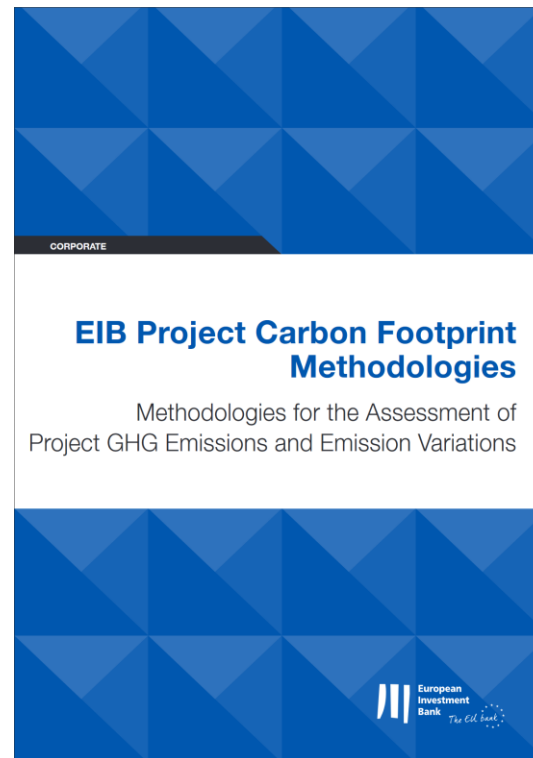
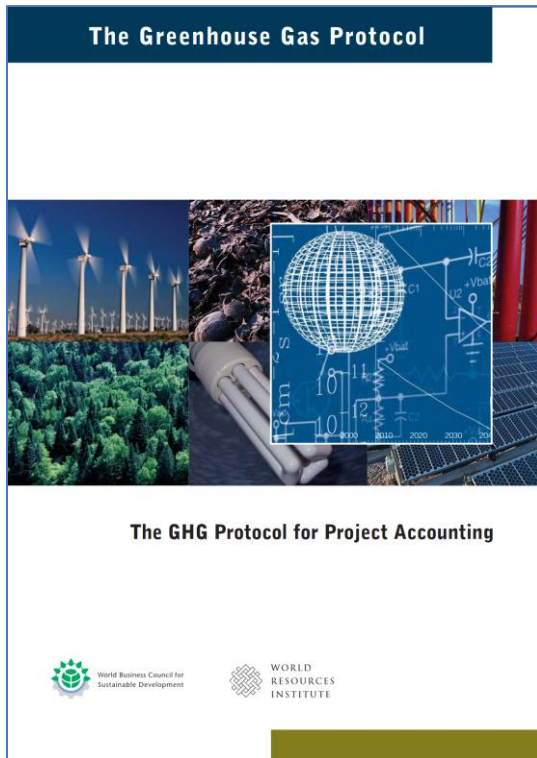
Greenhouse gas assessments

Climate Change Mitigation and adaptation

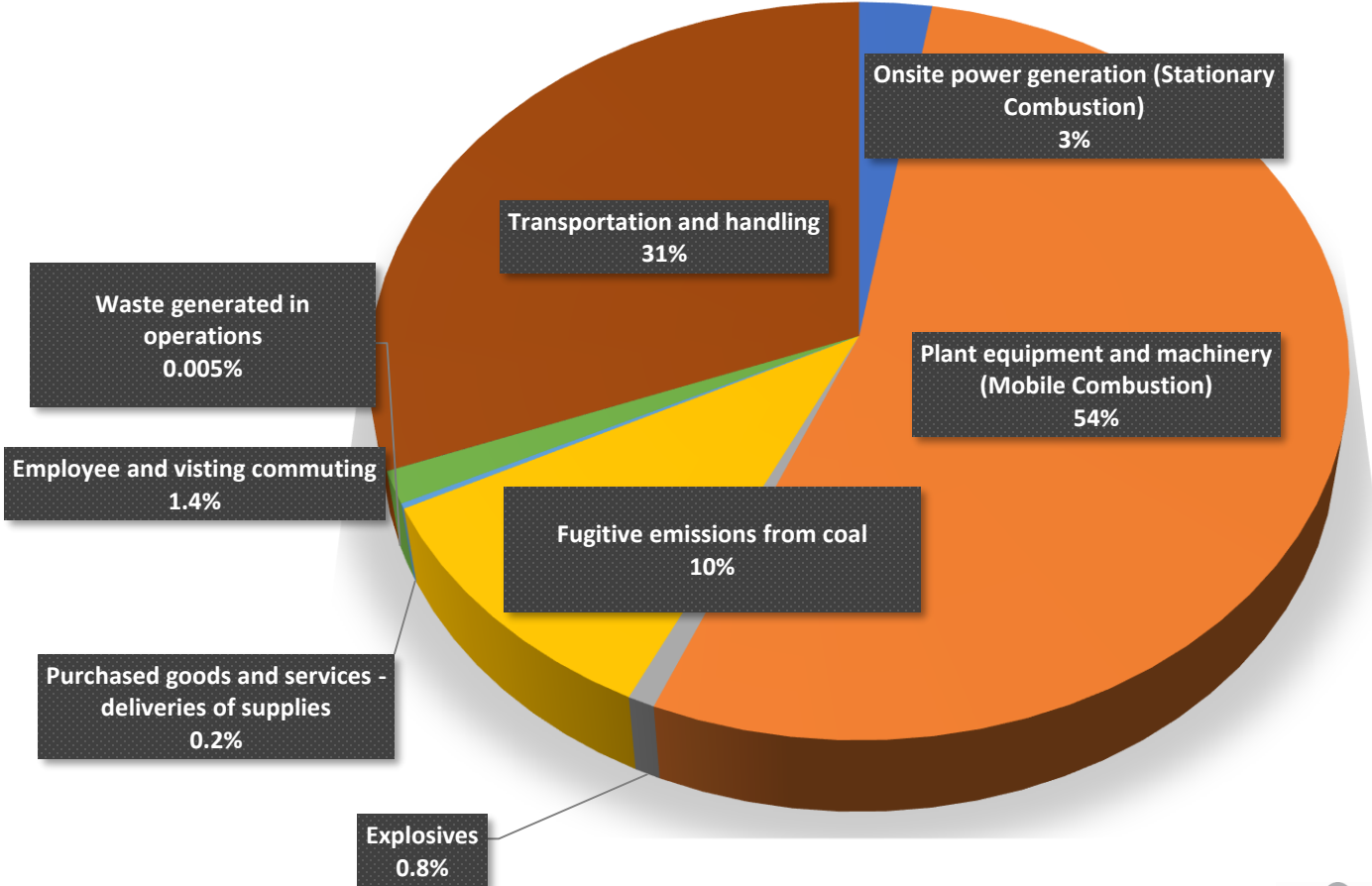
Greenhouse gas assessments for new projects



Guidance



Case Study: Example Surface Mine



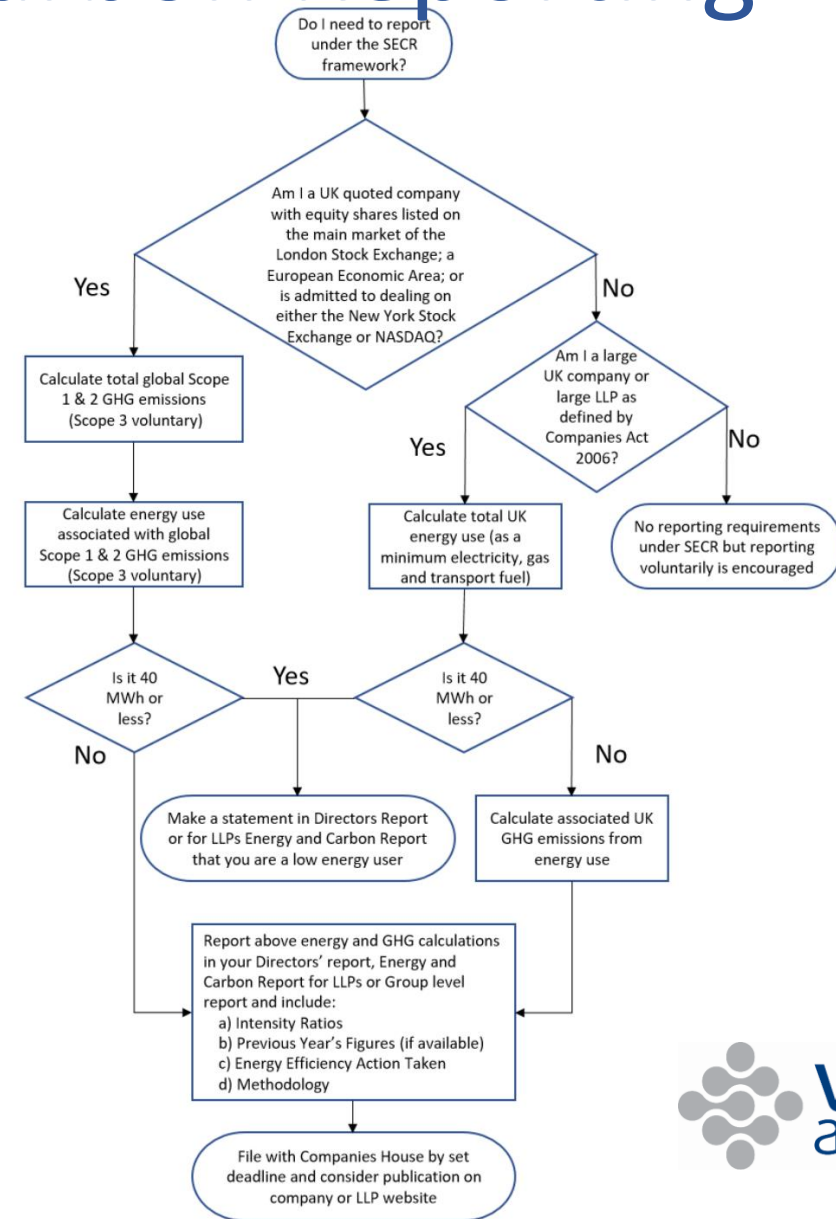
Voluntary assessment and SECR



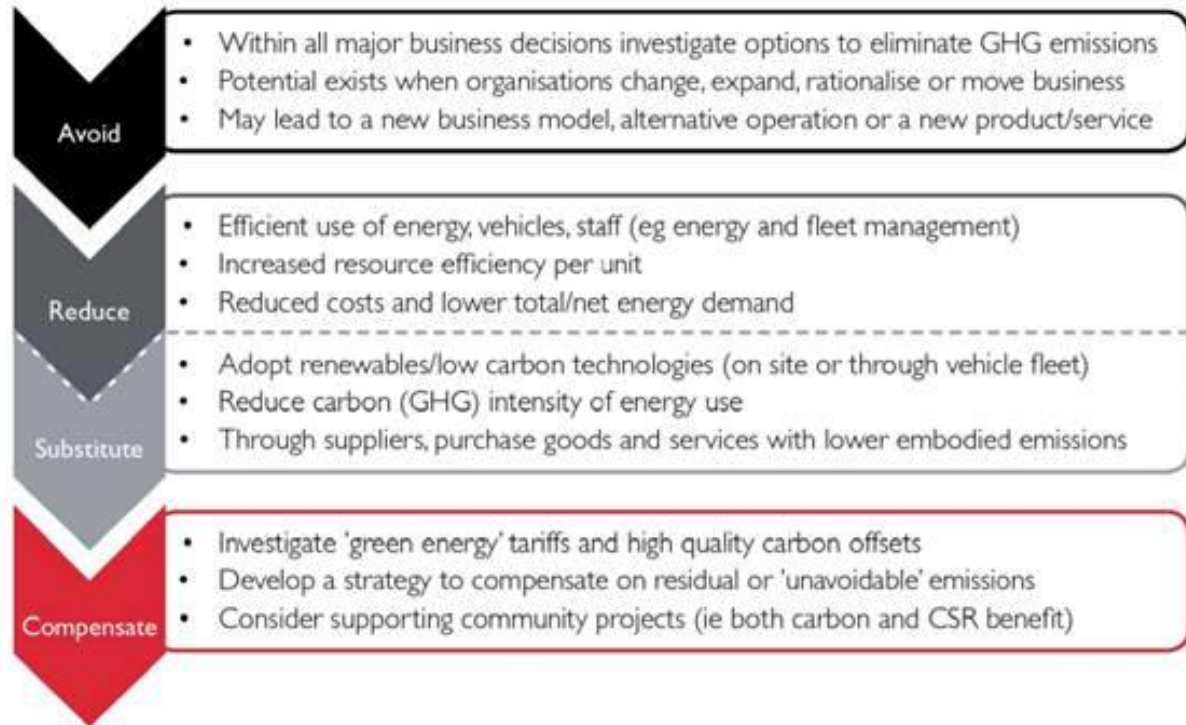
Streamlined Energy and Carbon Reporting (SECR)

The qualifying conditions are met by a company or LLP in a year in which it satisfies two or more of the following requirements:

- Turnover £36 million or more
- Balance sheet total £18 million or more
- Number of employees 250 or more



Mitigation



Questions?

Paul Evans | pevans@wardell-armstrong.com