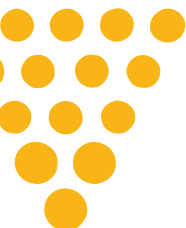




CORNWALL
COUNCIL
one and all • onen hag oll

Safeguarding Cornwall's Mineral Resources

Ellie Inglis-Woolcock
Principal Development Officer



www.cornwall.gov.uk

Safeguarding Cornwall's Mineral Resources

Mineral resources in Cornwall

Why it is important to safeguard minerals?

Policy context

Cornwall Minerals Safeguarding Plan

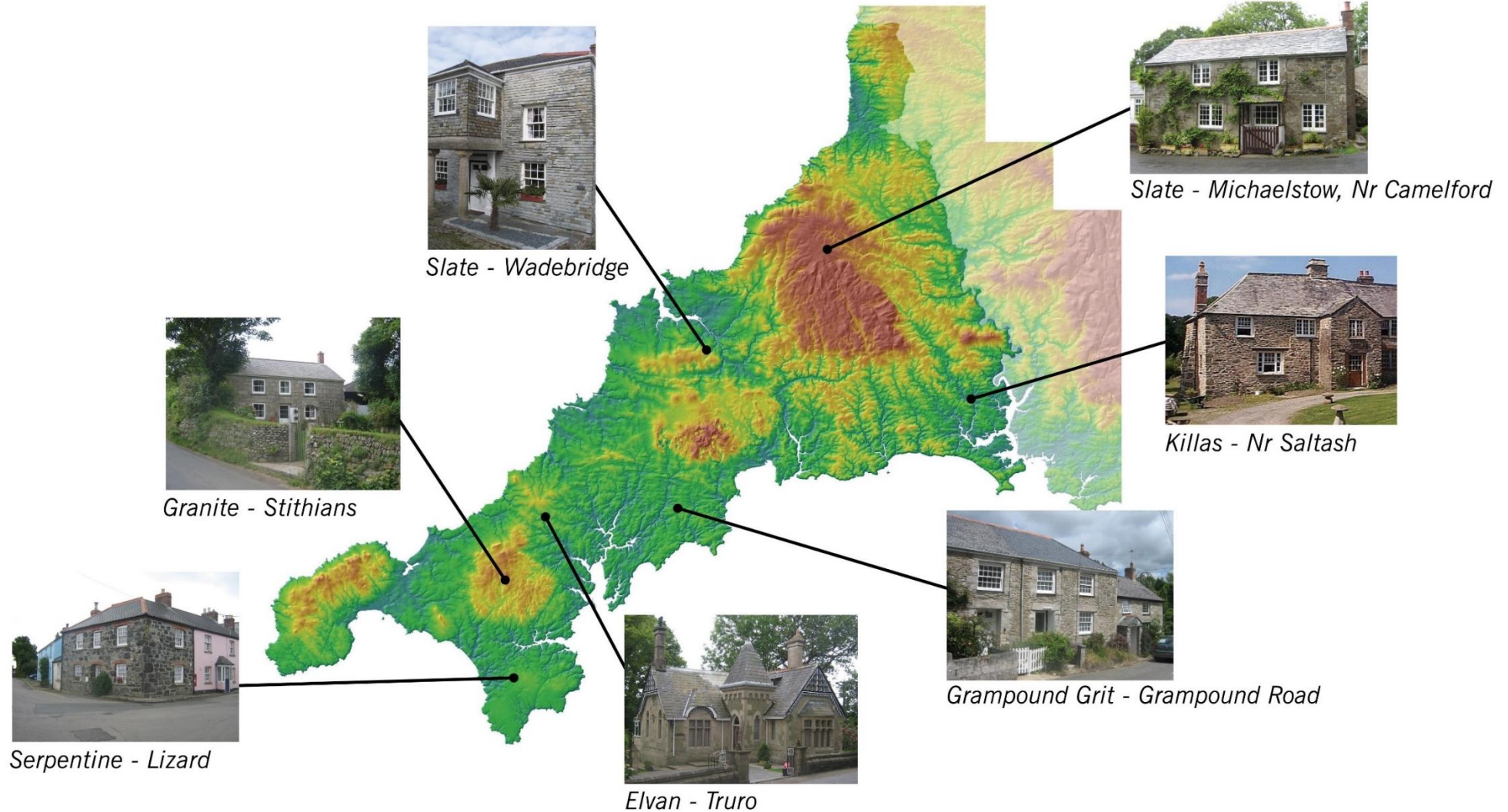
Mineral Safeguarding Areas and Policy



Mineral Resources in Cornwall



Geology of Cornwall



Why is it important to safeguard minerals?

Finite resource

Not needlessly sterilised by other development

Sufficient minerals for future generations

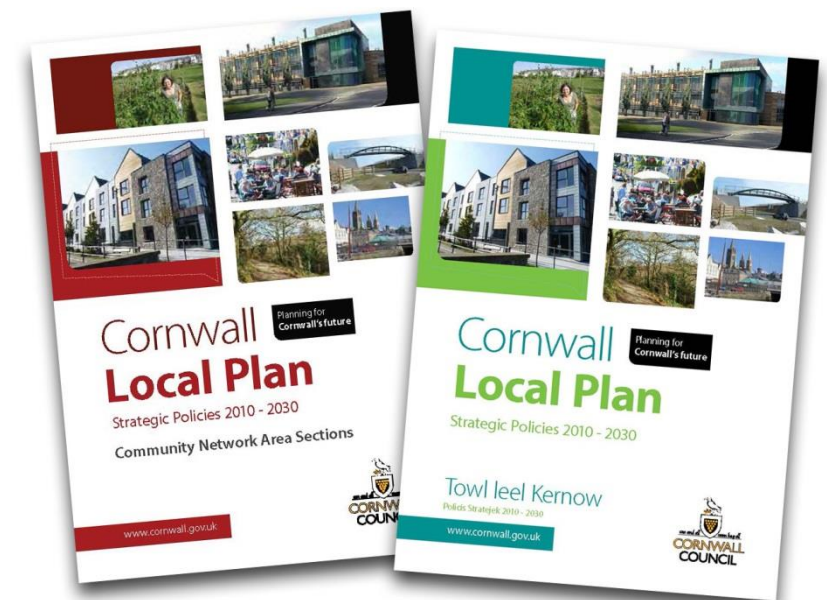
Cornwall has a wealth of mineral resources



Policy Context

National Planning Policy Framework

Cornwall Local Plan



Cornwall Minerals Safeguarding Plan (DPD)

Policy to safeguard mineral resources and infrastructure from other forms of development

127 Mineral Safeguarding Areas

Adopted December 2018

Policy Map



Identifying Mineral Safeguarding Areas

Site	IP	Grid Ref	Planning Status	Mineral Type	Geological Mapping Score	Geological Mapping Comments	Scarcity / Occurrence score	Scarcity / Occurrence Comments	Viability Score	Viability Comments	Extraction Levels Score	Extraction Levels Comments	Quality / Range of uses score	Quality / Range of uses Comments	Pressure from Strategic Development Score	Pressure from Strategic Development Comments	Comments	Overall Score
Blackhill	A1	SQ47 817	Active	Dolomite	Amber	There is some uncertainty with definition.	Amber	The extent of the resource is fairly limited.	Green	The viability of the resource is clearly demonstrated.	Red	Little or no current or future extraction.	Green	High quality and/or range of uses.	Red	The resource is unaffected by pressure from other strategic development.	Site is not currently working but has produced significant amounts of aggregate. PSV is 57-60. Site is potentially worked out. PSV resource cannot be defined on geological mapping. PA15/02511/PRAPP Pre-application advice for amendments to planning conditions and an application seeking to operate road stone coating plant without restriction on working hours but with appropriate controls to address environmental amenity impacts.	Green
Canford (H)	A2	SX168 930	Active	Sandstone	Green	The resource can be easily defined from map data.	Amber	The extent of the resource is fairly limited.	Amber	There is some evidence of viability.	Red	Little or no current or future extraction.	Amber	Medium quality and/or range of uses.	Red	The resource is unaffected by pressure from other strategic development.	Recent tests indicate potentially high PSV resource. PSV resource cannot be defined on geological mapping. Site has not been worked for many years. Site has begun working at a low level. No products currently being produced. Heritage Site (once planning permission expires this site is to be considered for heritage materials).	Amber
Carnew (H)	A3	SW760 745	Active	Granite	Green	The resource can be easily defined from map data.	Red	The resource exists over large areas.	Green	The viability of the resource is clearly demonstrated.	Amber	Medium/low level of current or future extraction.	Amber	Medium quality and/or range of uses.	Amber	Some parts of the resource may face pressure from other strategic development.	Site is currently extracting aggregate. PSV of 57 (cat 6). Heritage Site (once planning permission expires this site is to be considered for heritage materials).	Amber
Carthuer	Cart huter	SX260 628	Dormant	Slate	Green	The resource can be easily defined from map data.	Red	The resource exists over large areas.	Red	There is no evidence of viability.	Red	Little or no current or future extraction.	Red	Low Quality and/or limited range of uses.	Red	The resource is unaffected by pressure from other strategic development.	The resource (Saltash Formation) is extensive (BGS). From Trevoise Head area (SW 86 76), north Cornwall to Torquay area (SX 92 63), south Devon. Dormant site, no extraction data. No products currently being produced. Site visit - Site is inaccessible and not suitable for extraction, access is via Carthuer Barton.	Red

Resource assessment criteria:

- Scarcity and occurrence
- Viability
- Uses

Assessed all known mineral resources

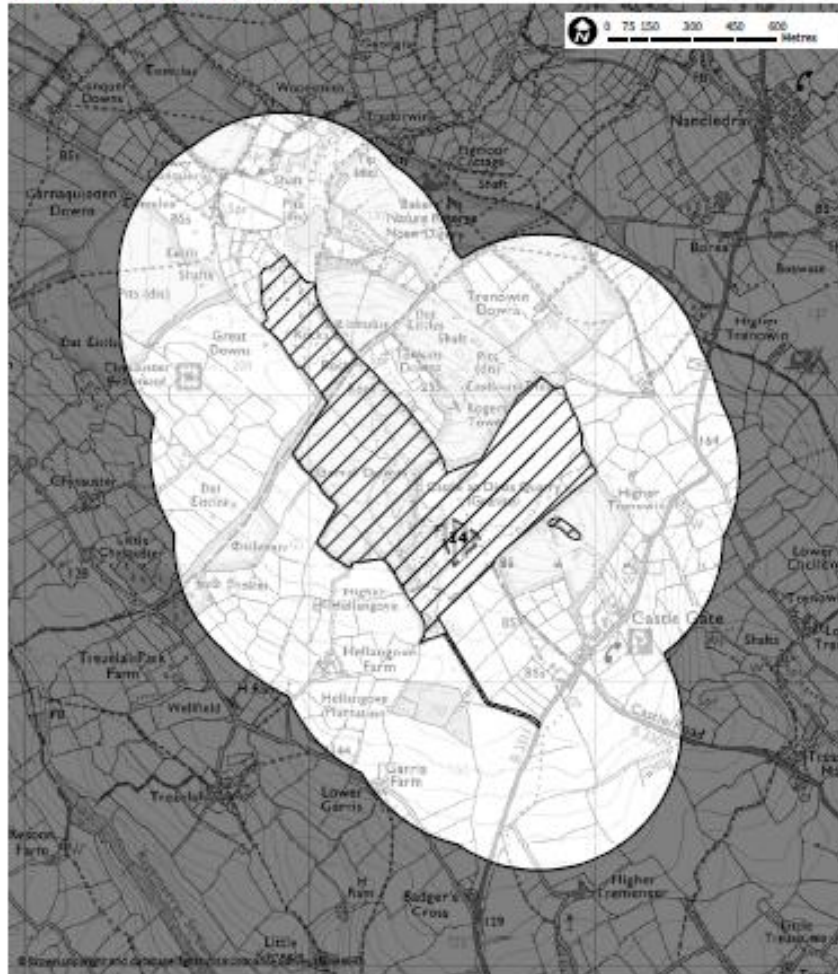
Extent of Mineral Safeguarding Areas

Mineral Type	Mineral Resource	Buffer
Aggregate	Dolerite, sandstone, granite, gritstone, gabbro, blue elvan Existing mineral sites with planning permission	500m
Building Stone	Silica sand, granite, slate Existing mineral sites with planning permission	250m
Heritage Stone	Slate, luxulyanite, granite, sandstone, serpentine, elvan, gabbro Former quarries without mineral planning permission	100m
China Clay	China clay, St Austell (Hensbarrow) area	250m
Metals	Tin, copper, arsenic, tungsten, sulphur, zinc, silver, lead Known strategically important shafts	500m radius around principal shafts 250m radius around secondary shafts
Infrastructure	Concrete batching plants, railways, rail sidings, mineral wharves, mineral haul roads	Up to 250m on a case-by-case basis

Aggregate Mineral Safeguarding Areas

A4

Castle-an-Dinas Quarry and plant (H)



Mineral Safeguarding Area
 Neighbouring Site Extents
 Neighbouring/Overlapping Mineral Safeguarding Area
 Mineral Planning Permission

A14

West of England Quarry and plant (H)



Mineral Safeguarding Area
 Neighbouring Site Extents
 Neighbouring/Overlapping Mineral Safeguarding Area
 Mineral Planning Permission

Building Stone Mineral Safeguarding Areas

BS3

Callywth Quarry (H)



Mineral Safeguarding Area
 Mineral Planning Permission

BS7

Delabole Quarry (H)



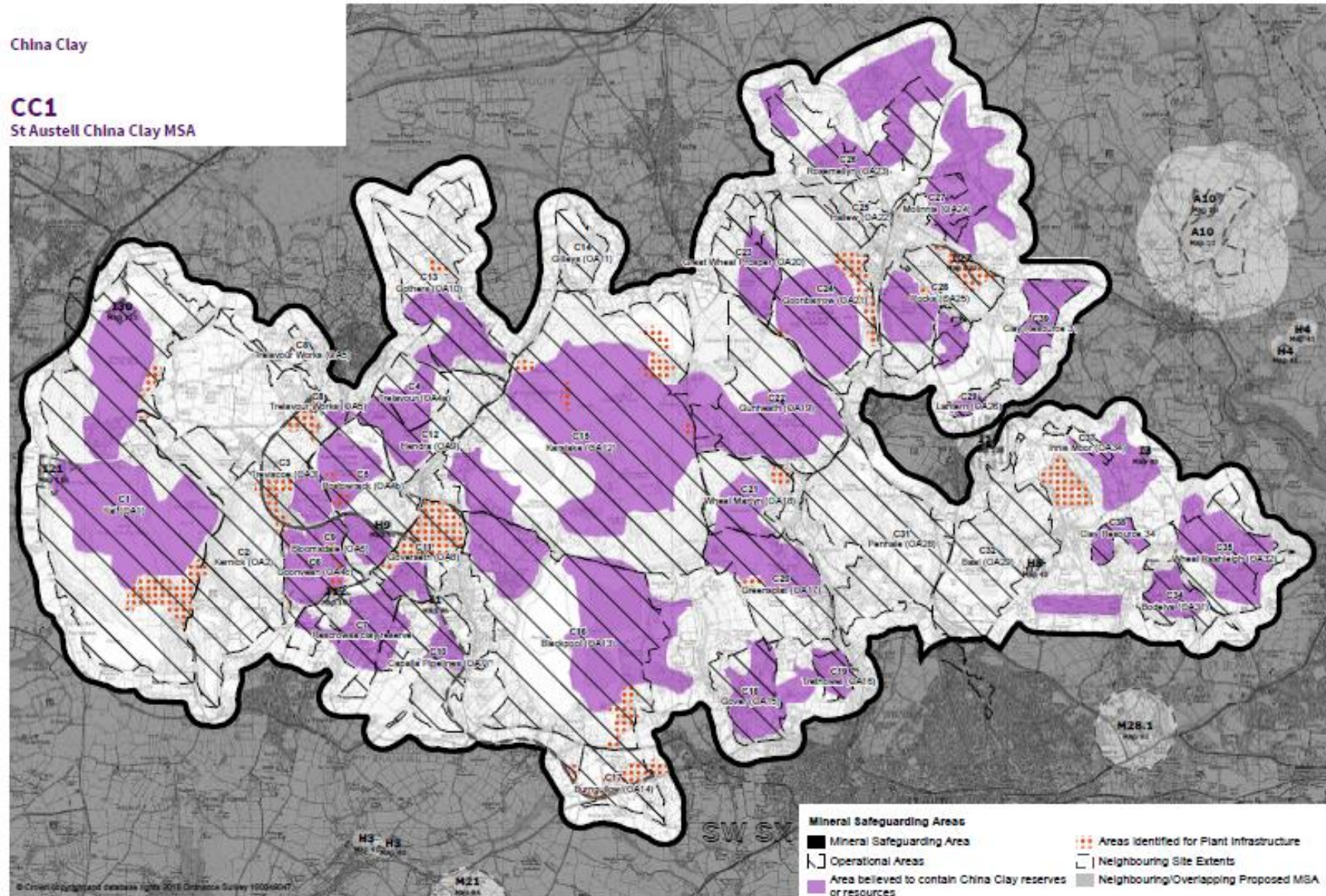
Mineral Safeguarding Area
 Mineral Planning Permission
 Neighbouring Site Extents
 Neighbouring/Overlapping Mineral Safeguarding Area

China Clay Mineral Safeguarding Areas

China Clay

CC1

St Austell China Clay MSA



Heritage Stone Mineral Safeguarding Areas

H17
Newham Quarry



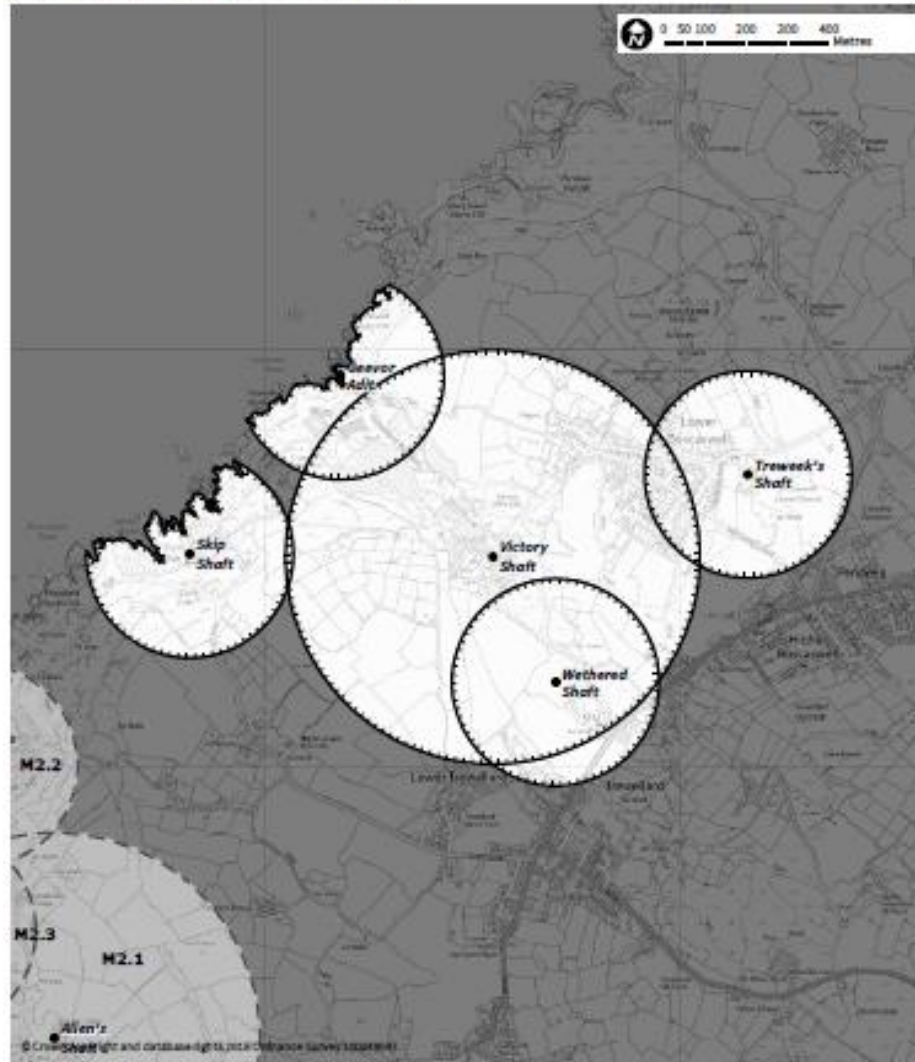
H19
Pentewan Quarry



Metals Mineral Safeguarding Areas

M7

Geevor, Levant and Boscaswell Mines



Mineral Safeguarding Area
 Shafts
 Neighbouring/Overlapping Mineral Safeguarding Area
 Site with no Mineral Planning Permission
 Neighbouring Site Extents

M10

Mount Wellington, United Downs and Wheal Maid Mines, Bissoe



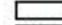



Mineral Safeguarding Area
 Shafts
 Neighbouring/Overlapping Mineral Safeguarding Area
 Site with no Mineral Planning Permission
 Neighbouring Site Extents

Infrastructure Mineral Safeguarding Areas

11

Burngallow to St Dennis China Clay Railway





-  Mineral Safeguarding Area
-  Neighbouring Site Extents
-  Infrastructure Sites
-  Neighbouring/Overlapping Mineral Safeguarding Area

19

Falmouth Wharves



-  Mineral Safeguarding Area
-  Infrastructure Sites

Mineral Safeguarding Policy

Policy MS1

Mineral resources and infrastructure within Mineral Safeguarding Areas defined on the Policy Map shall be safeguarded from sterilisation.

Planning permission for non-mineral development will only be permitted within Mineral Safeguarding Areas where it can be demonstrated that;

- a. the proposed development would not conflict with mineral related uses of the site or infrastructure; or
- b. the applicant has demonstrated, to the satisfaction of the mineral planning authority, that the mineral resource or infrastructure is not of current or potential economic value or that the mineral resource is not of value for heritage uses; or
- c. the mineral resource can be satisfactorily extracted prior to the development taking place; or
- d. that the mineral resource or infrastructure will not be subject to unacceptable detrimental effects and the proposed development would not suffer unacceptable adverse impacts as a result of the mineral operations; or
- e. there is overriding strategic need for the non-mineral development that outweighs the need to safeguard the minerals; or
- f. the non-mineral development within the Mineral Safeguarding Area is exempt as set out in the exemption list in paragraph 81.

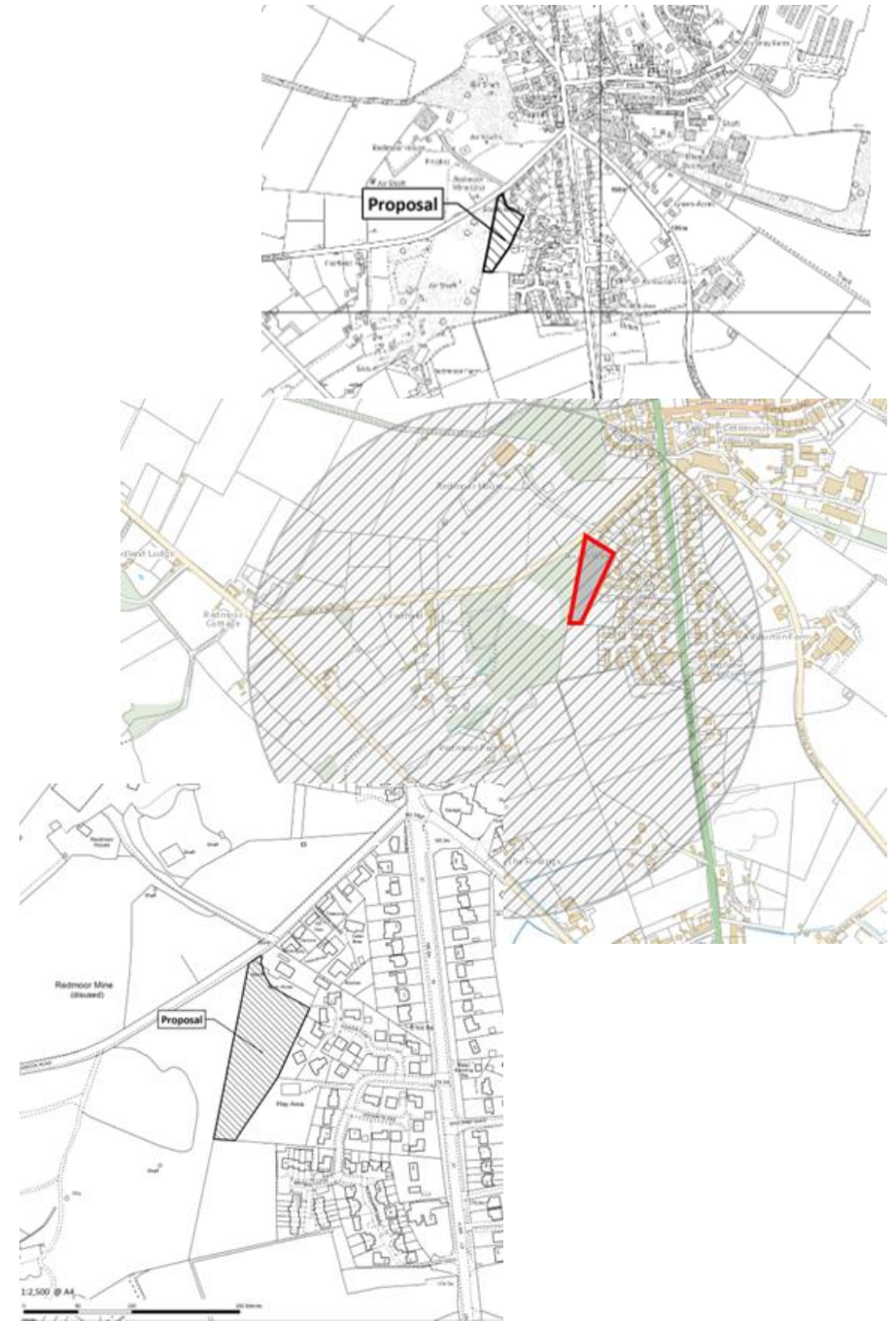
Implementing mineral safeguarding policy

Affordable housing-led proposal

10 dwellings

Metal mineral safeguarding area

Refusal on mineral safeguarding grounds



Online Resource www.Cornwall.gov.uk/mineralsdpd



Guide to Materials and Cornish Building Stones

The Cornish Building Stone and Slate Guide 2007



Site Status:
Rock Type:
Existing/potential uses:



Operational Slate
Roofing slate (sized or random), dimension stone (floor slabs, window sills, work tops, fire hearths/surrounds), monumental products (gravestones, plaques), building stone, walling stone (landscaping, paving, slate chippings) and secondary aggregates (powders, granules).

Special Characteristics: Time-proven durability and versatility, product life of hundreds of years.

Contact Details: Mr George Hamilton
The Delabole Slate Co Ltd, Pengelly, Delabole, Cornwall PL33 9AZ

Tel: 01840 212242
Fax: 01840 212948
Email: sales@delaboleslate.co.uk
Website: www.delaboleslate.co.uk www.delaboleslatesigns.co.uk

27



Site Status:
Rock Type:
Existing/potential uses:

Operational Granite
Dimensional products (building stone, walling stone), landscaping products (paving, kerbs, setts) and cobbles
Special Characteristics: One of the hardest granites quarried anywhere in the world. Supplied stone for Eddystone Lighthouse, Tower Bridge, Royal Opera House, Trafalgar Square and Princess Diana Fountain.

Additional Information: Last working dimensional granite quarry in Cornwall employing 26 people.

Contact Details: Mr John Brummitt
Ennstone Breedon Limited, Main Street, Breedon on the Hill Derby DE73 1AP

Tel: 01332 694001
Fax: 01332 695159
Quarry Contact: Mr I Skinner, Quarry Manager - 01208 850217
Website: www.ennstone.co.uk www.silvergreygranite.com

37



Concluding thoughts....



Minerals are vital for low carbon technology

Contribute to the local distinctiveness of an area



Thank you

If you have any questions or comments

Ellie.Inglis-Woolcock@cornwall.gov.uk