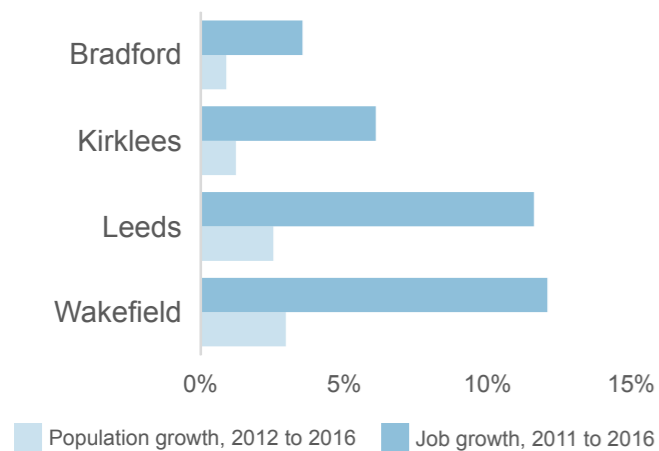


# Leeds

These maps show planning permissions granted for schemes of 50 or more houses in the Leeds city-region between **2012 - 2015** and **2015 - 2017**. Our spatial analysis then shows the scale of permissions and their location in relation to employment clusters, railway stations the existing built-up area.

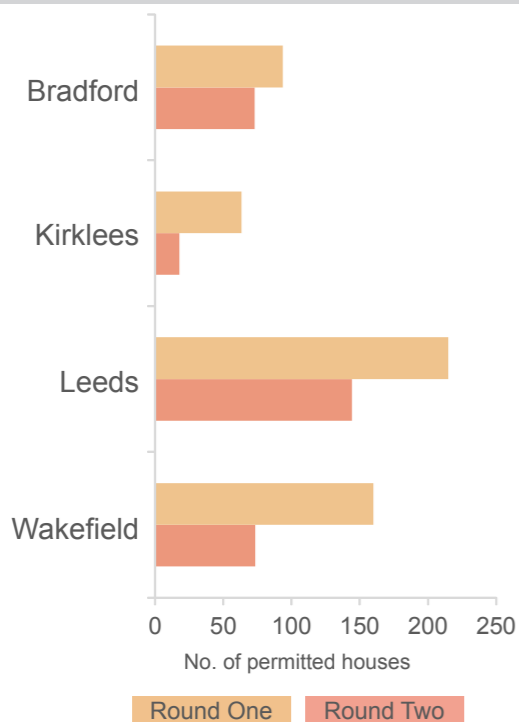
## Local authorities in the city-region



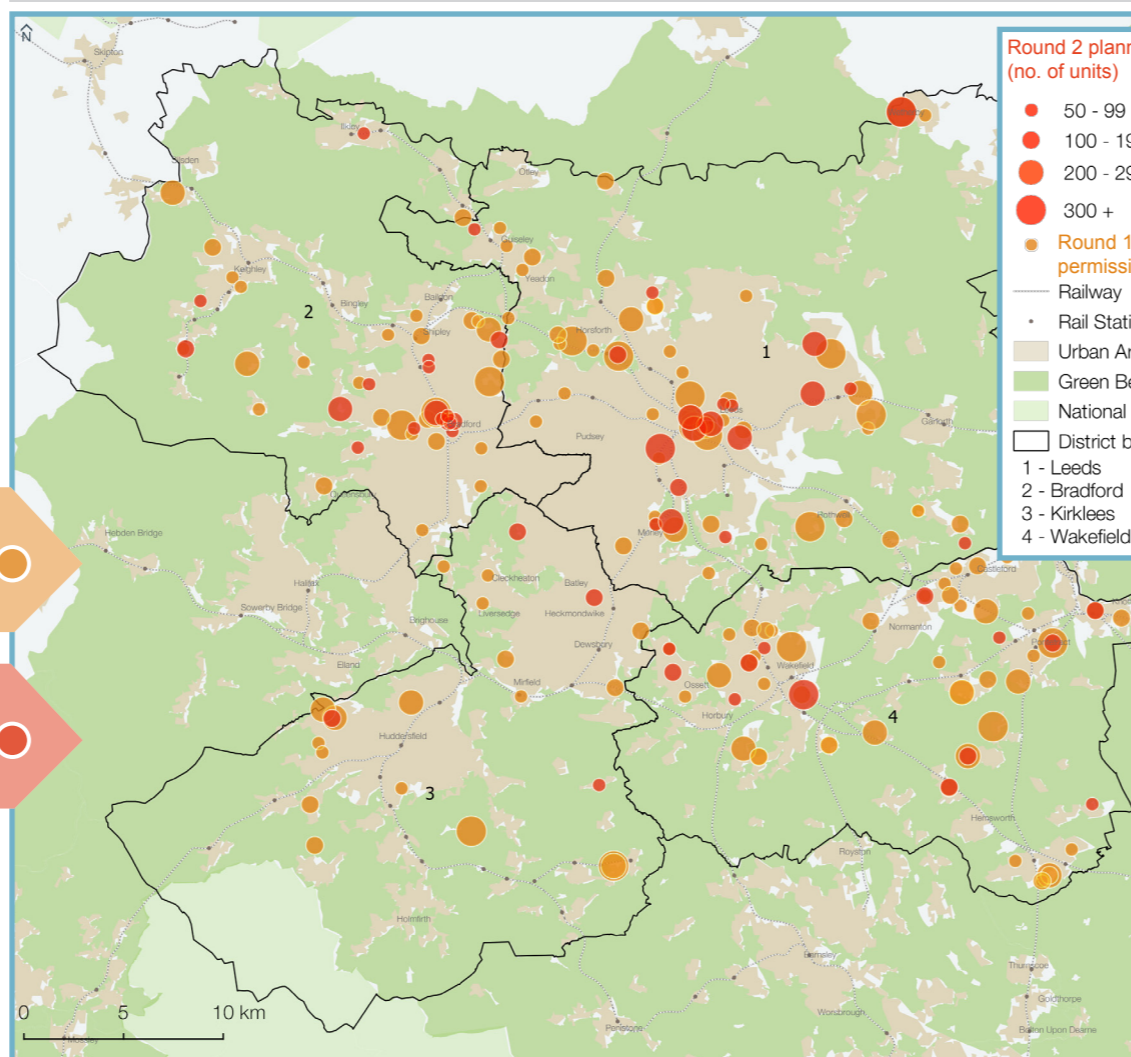
**Round One:** Jan 2012 to Sep 2015  
 Total number of schemes mapped: **146**  
 Total number of housing units: **23,922**

**Round Two:** Oct 2015 to Sep 2017  
 Total number schemes mapped: **55**  
 Total number of housing units: **7,403**

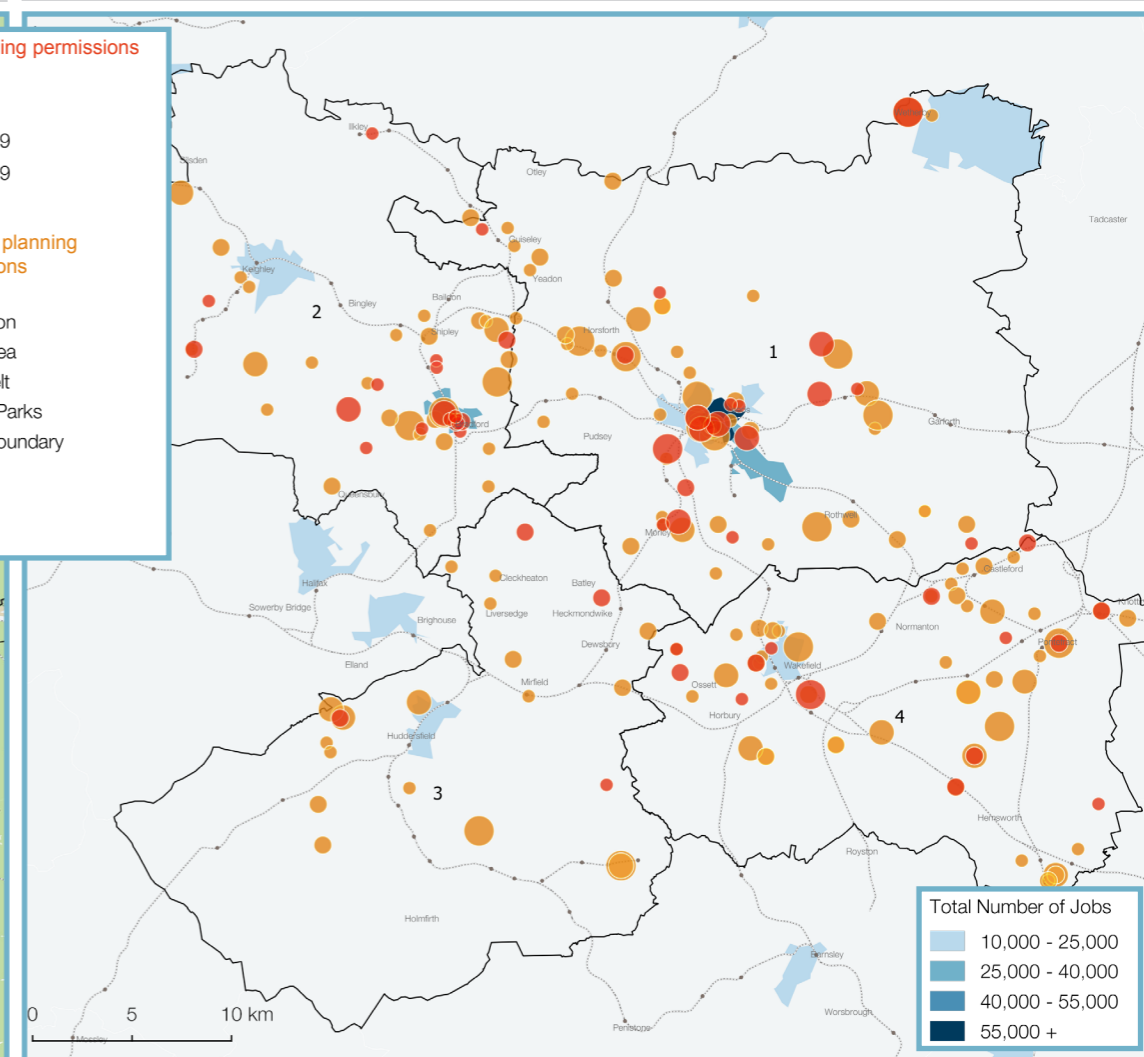
Average number of homes granted permissions per month, by local authority



A map of the Leeds city-region showing housing permissions, built up areas, protected land and the rail network



A map of the Leeds city-region showing housing permissions and employment clusters of 10,000 or more jobs



Map reproduced from QGIS 2.18.16 edition. Contains OS data © Crown copyright 2017. National Parks and Greenbelt data sourced from Office of National Statistics under OGL open government license. Planning permissions data sourced from EGI and Jobs Data sourced from Office for National Statistics licensed under the Open Government Licence v.1.0.

## The proportion of permitted houses...

