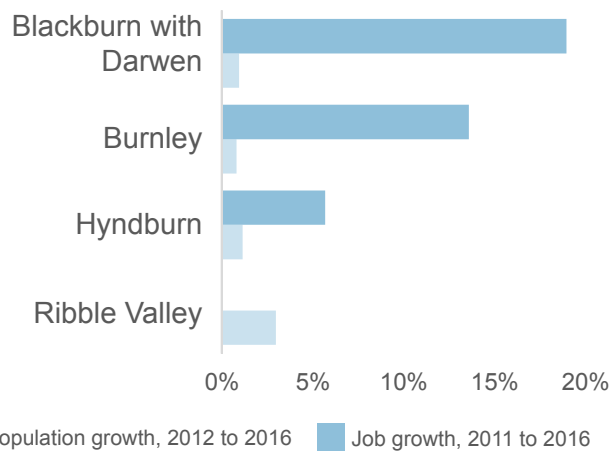


# Blackburn

These maps show planning permissions granted for schemes of 50 or more houses in the Blackburn city-region between **2012 - 2015** and **2015 - 2017**. Our spatial analysis then shows the scale of permissions and their location in relation to employment clusters, railway stations the existing built-up area.

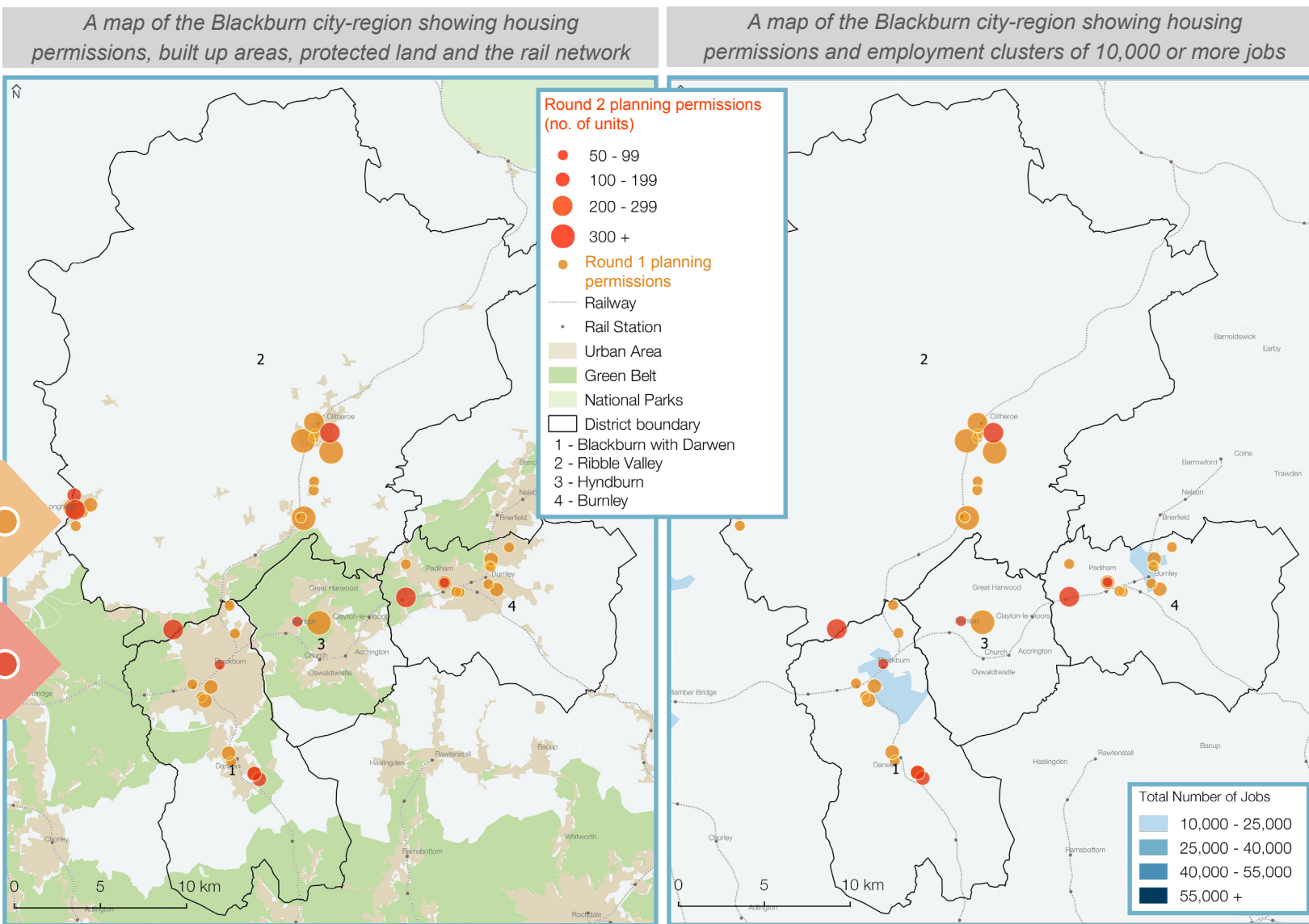
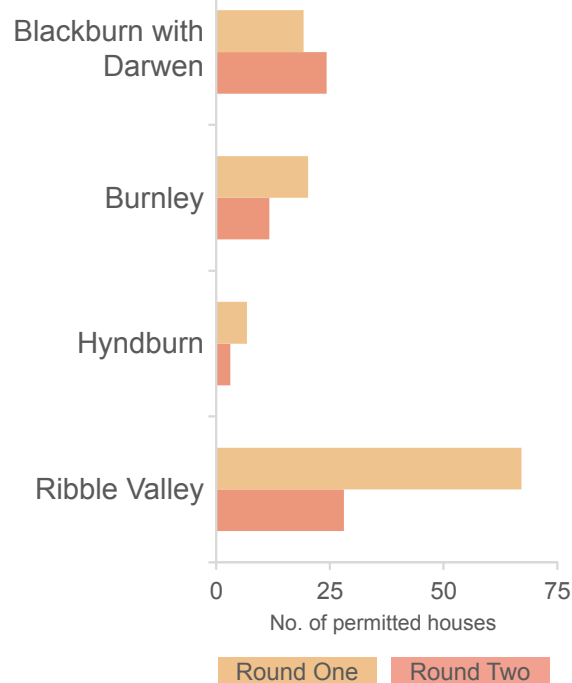
## Local authorities in the city-region



**Round One:** Jan 2012 to Sep 2015  
 Total number of schemes mapped: **33**  
 Total number of housing units: **5,096**

**Round Two:** Oct 2015 to Sep 2017  
 Total number schemes mapped: **10**  
 Total number of housing units: **1,611**

### Average number of homes granted permissions per month, by local authority



Map reproduced from QGIS 2.18.16 edition. Contains OS data © Crown copyright 2017. National Parks and Greenbelt data sourced from Office of National Statistics under OGL open government license. Planning permissions data sourced from EGI and Jobs Data sourced from Office for National Statistics licensed under the Open Government Licence v.1.0.

