

# Associate membership

## A-APC & EP-APC<sup>1</sup>

### Key differences to the L-APC

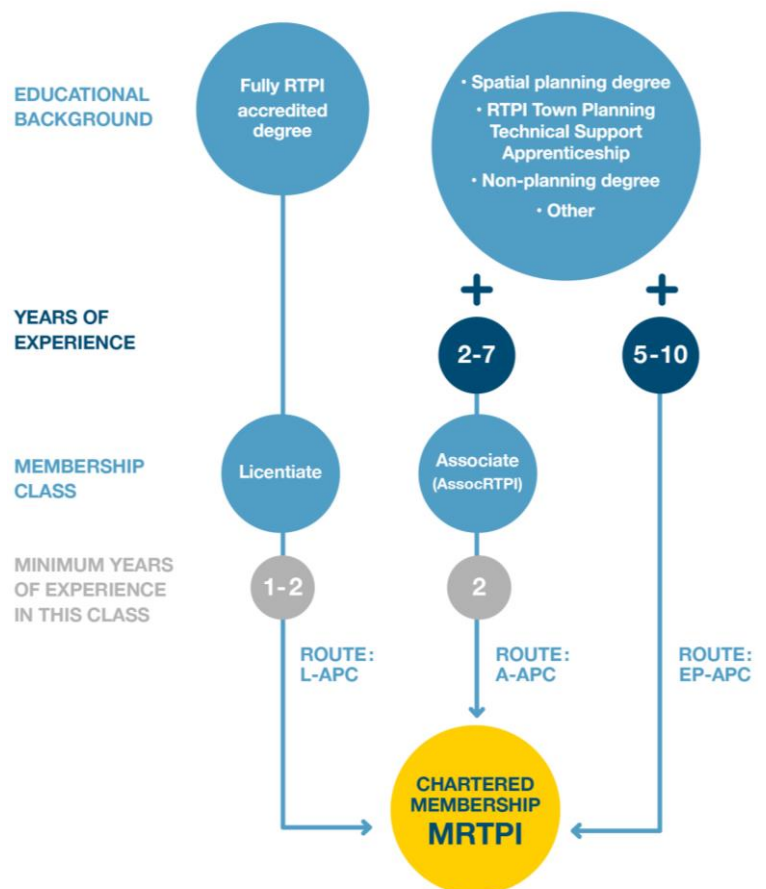
#### Associate membership (AssocRTPI)

*The membership class for professionals working in a related discipline or planners without a fully RTPI accredited degree.*

1. Experience requirements **vary from 2-7 years** depending on the qualification held.
2. Candidates need to demonstrate, at a minimum, a working understanding of the planning system and **engagement with spatial planning**.
3. Candidates **do not complete a log book** to become an Associate (though to progress to Chartered through the A-APC they would).
4. There are **8 competencies** (3 less than the L-APC), and most need to be evidenced at a lower type:
  - C1. Professional and the RTPI Code of Conduct (Core)
  - C2. The spatial planning context (Understanding)
  - C7. The legal framework (Awareness)
  - C8. Ethical challenges (Awareness)
  - C9. The political context (Awareness)
  - C10. The economic context (Awareness)
  - C11. Reflection and review (Understanding)
  - C12. Sustainability (Understanding)

5. It is a **4,000 word written submission** (+/-10%). 1-2 case studies are required for the Professional Competence Statement (PCS).

Full details: [www.rtpi.org.uk/associate](http://www.rtpi.org.uk/associate)



<sup>1</sup> A-APC = Associate Assessment of Professional Competence.  
EP-APC = Experienced Practitioner Assessment of Professional Competence.  
L-APC = Licentiate Assessment of Professional Competence.



**RTPI**

Royal Town Planning Institute

## Chartered membership via A-APC (MRTPI)

*The route for Associate members (that are not eligible for the EP-APC).*

1. Experience requirement is **2 years as an Associate member**.
2. There are **3 more competencies** than the L-APC, the additional competencies are:
  - C12. Sustainability
  - C13. Engagement and participation
  - C14. Specialist knowledge and its relationship to spatial planning
3. As part of C2. *The spatial planning context*, candidates need to **link planning theory to their case study**, demonstrating an understanding of the principles behind their practice (candidates may want to undertake further reading for this).
4. It is a **6,750 word submission** (+/-10%). **2-4 case studies** are required for the Professional Competence Statement (PCS).

Full details: [www.rtpi.org.uk/aapc](http://www.rtpi.org.uk/aapc)

## Chartered membership via EP-APC (MRTPI)

*The route for planners with extensive experience.*

1. Experience requirements **vary from 5-10 years** depending on the qualification held.
2. Candidates do not have to be a member of the Institute before applying (though Licentiates and Associates can apply through this route if they meet requirements).
3. Candidates do not complete a log book; instead they submit **5-10 examples of their professional work** to support the claims in the written submission.
4. There are **3 more competencies** than the L-APC, the additional competencies are:
  - C12. Sustainability
  - C13. Engagement and participation
  - C14. Specialist knowledge and its relationship to spatial planning
5. As part of C2. *The spatial planning context*, candidates need to **link planning theory to their case study**, demonstrating an understanding of the principles behind their practice (candidates may want to undertake further reading for this).
6. It is a **6,750 word submission** (+/-10%). **2-4 case studies** are required for the Professional Competence Statement (PCS).
7. Candidates with significant strategic level experience, have the **option to complete C15. Leadership in spatial planning<sup>2</sup>** and **omit the following competencies**:
  - C3. Identifying and analysing issues
  - C4. Gathering appropriate information
  - C5. Identifying and evaluating a course of action
  - C6. Initiating and implementing a course of action

Full details: [www.rtpi.org.uk/epapc](http://www.rtpi.org.uk/epapc)

---

<sup>2</sup> If unsure whether your experience makes you eligible to take this optional competency, you are advised to take the 'standard' EP-APC route and complete C1-C14.

Contact the  
Membership Team

+44(0)20 7929 9462  
[membership@rtpi.org.uk](mailto:membership@rtpi.org.uk)