



How is Water Supply and Wastewater Treatment responding to low carbon pressures and growth in demand

18th July 2019

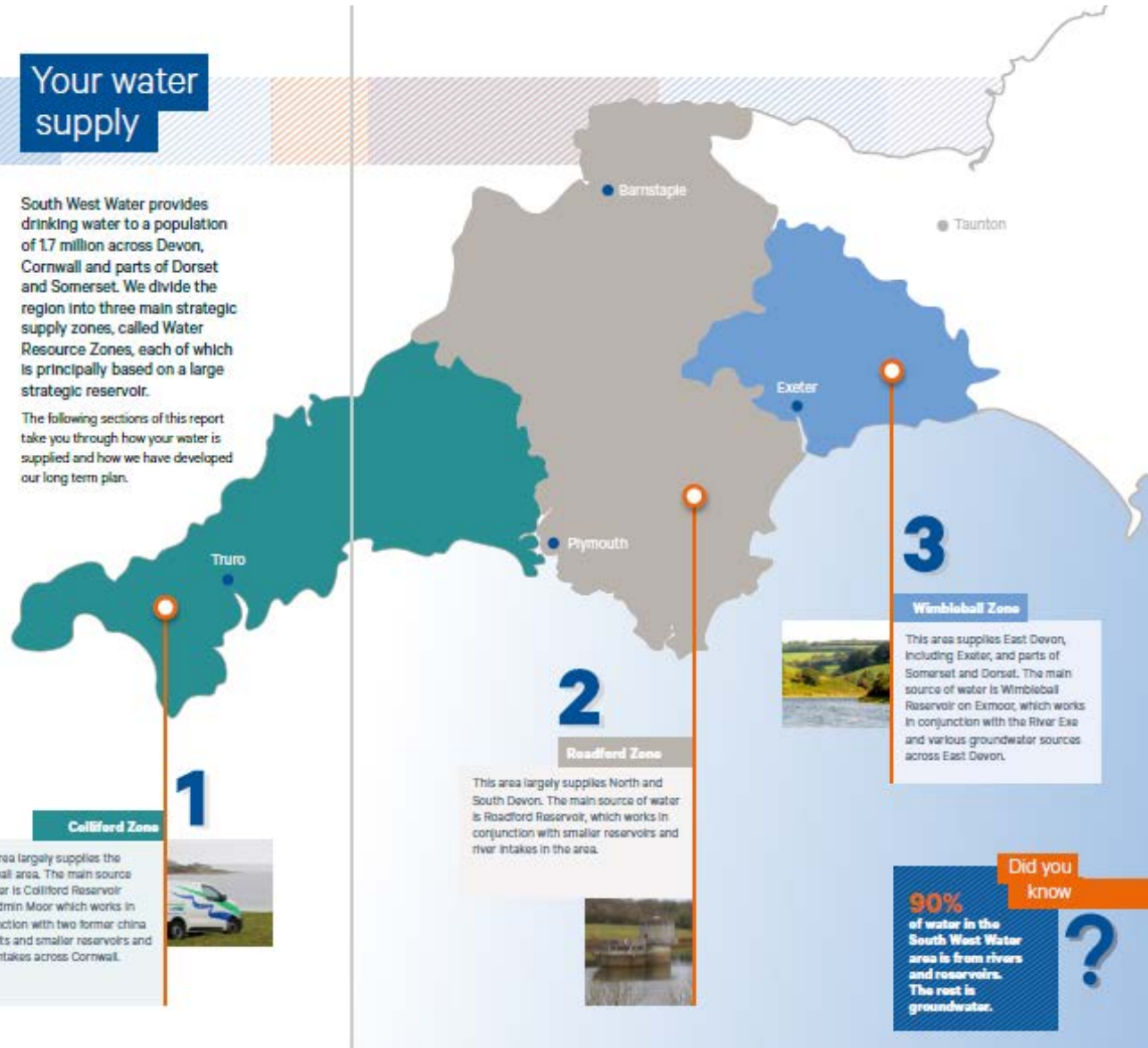


Water and Wastewater Supply

Your water supply

South West Water provides drinking water to a population of 1.7 million across Devon, Cornwall and parts of Dorset and Somerset. We divide the region into three main strategic supply zones, called Water Resource Zones, each of which is principally based on a large strategic reservoir.

The following sections of this report take you through how your water is supplied and how we have developed our long term plan.



1 Colliford Zone

This area largely supplies the Cornwall area. The main source of water is Colliford Reservoir on Bodmin Moor which works in conjunction with two former china clay pits and smaller reservoirs and river intakes across Cornwall.



2

Readford Zone

This area largely supplies North and South Devon. The main source of water is Readford Reservoir, which works in conjunction with smaller reservoirs and river intakes in the area.



3

Wimbleball Zone

This area supplies East Devon, including Exeter, and parts of Somerset and Dorset. The main source of water is Wimbleball Reservoir on Exmoor, which works in conjunction with the River Exe and various groundwater sources across East Devon.



Did you know

90% of water in the South West Water area is from rivers and reservoirs. The rest is groundwater.





The Challenges





Responses – Water Supply



Reduce the demand for water



Asset resilience



Improve the environment



Tools and technology



Responses - Regional Plans

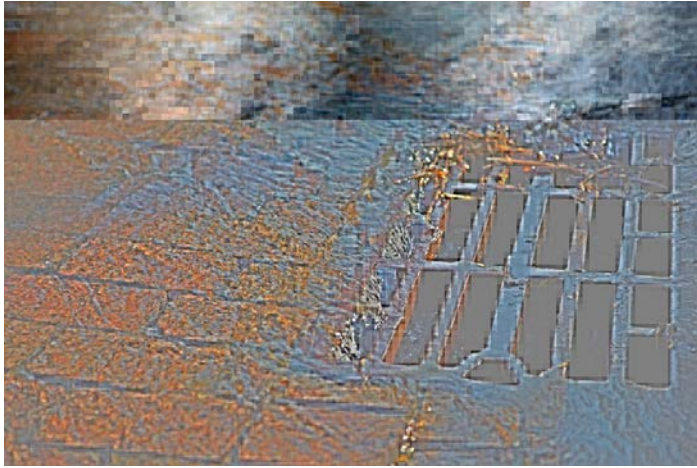


BRISTOL
WATER

 Environment
Agency


South West
Water

Wessex Water
YTL GROUP 



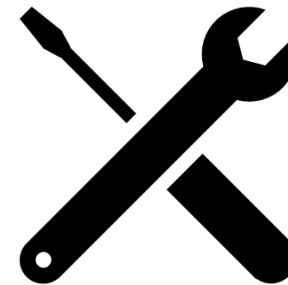
**Drainage and Wastewater Mgt
Plans**



Reduce loading on the system



Catchment solutions



Tools and technology



Responding to the challenges

