

Young Planners' Conference

**Connecting Town and Country:
Planning for Urban and Rural Areas**

11 – 12 October 2024 #YPCConf2024





RTPI

Royal Town Planning Institute

BREAKOUT 5

Connecting people and place in a rural-urban context

Rebecca Britton - Regional Director
Communities, Urban&Civic

Mike Jenner - Development Manager,
Urban&Civic

Chair: John Mason - Planning Consultant, Carter
Jonas

Urban&Civic

Connecting People and Place. In a Rural Urban Context

Rebecca Britton & Mike Jenner | 12th October 2024





14 sites: 8 in delivery

Alconbury Weald **RadioStation** **Middlebeck** **PRIORS HALL PARK** **WINTRINGHAM** **Waterbeach**
Rugby Newark ST NEOTS Barracks
MANYDOWN **Baldock** **Bowmans Cross** **Calvert** **Hinxton** **Kings Langley** **Stoughton** **Tempsford**
Basingstoke North Hertfordshire Hertsmere Buckinghamshire Cambridgeshire Hertfordshire Leicestershire Bedfordshire

11 partners

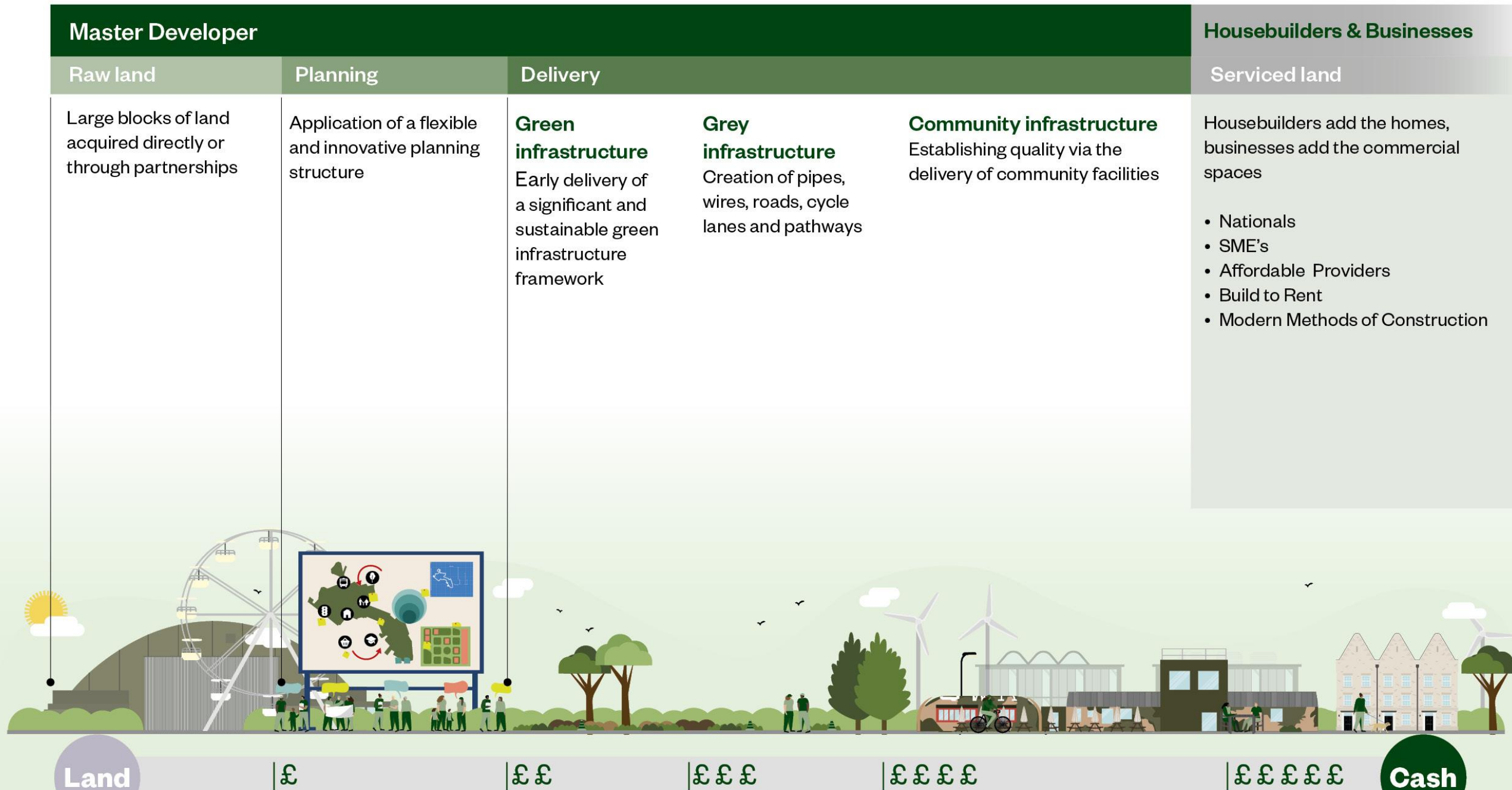


18 stakeholders



31 housebuilding customers







1,425
acres



6,500
new homes



3
new primary schools



1
secondary school



210,000m²
of open space and
sports pitches



2,000
people



1,500
people



6
shops



Enterprise Zone



network of footpaths



716
acres



6,500
new homes



3
new primary schools



1
secondary school



community facilities



health centre



town and local centres

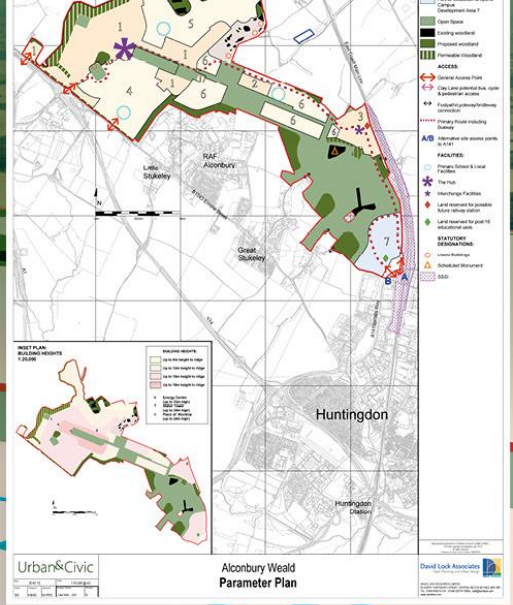


park and ride





Flexibility is better than prophecy



Time to add to the detail



Make/Grow

TIER 2

Key Phase 1 Framework

Application to Discharge
Outline Condition 10

FILE 2

Design Code

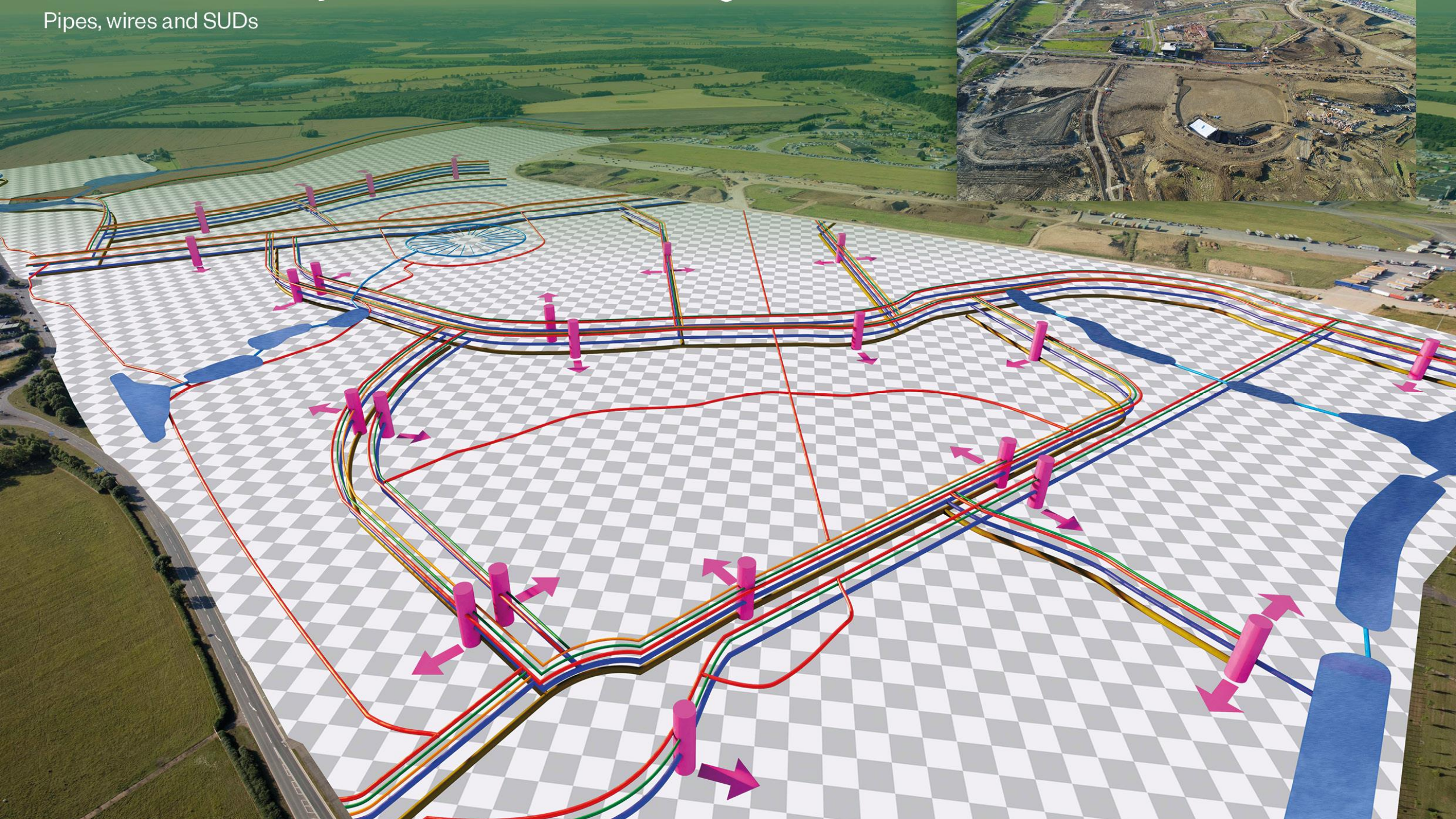
Contents
Key Phase 1 Framework Document
Design Code



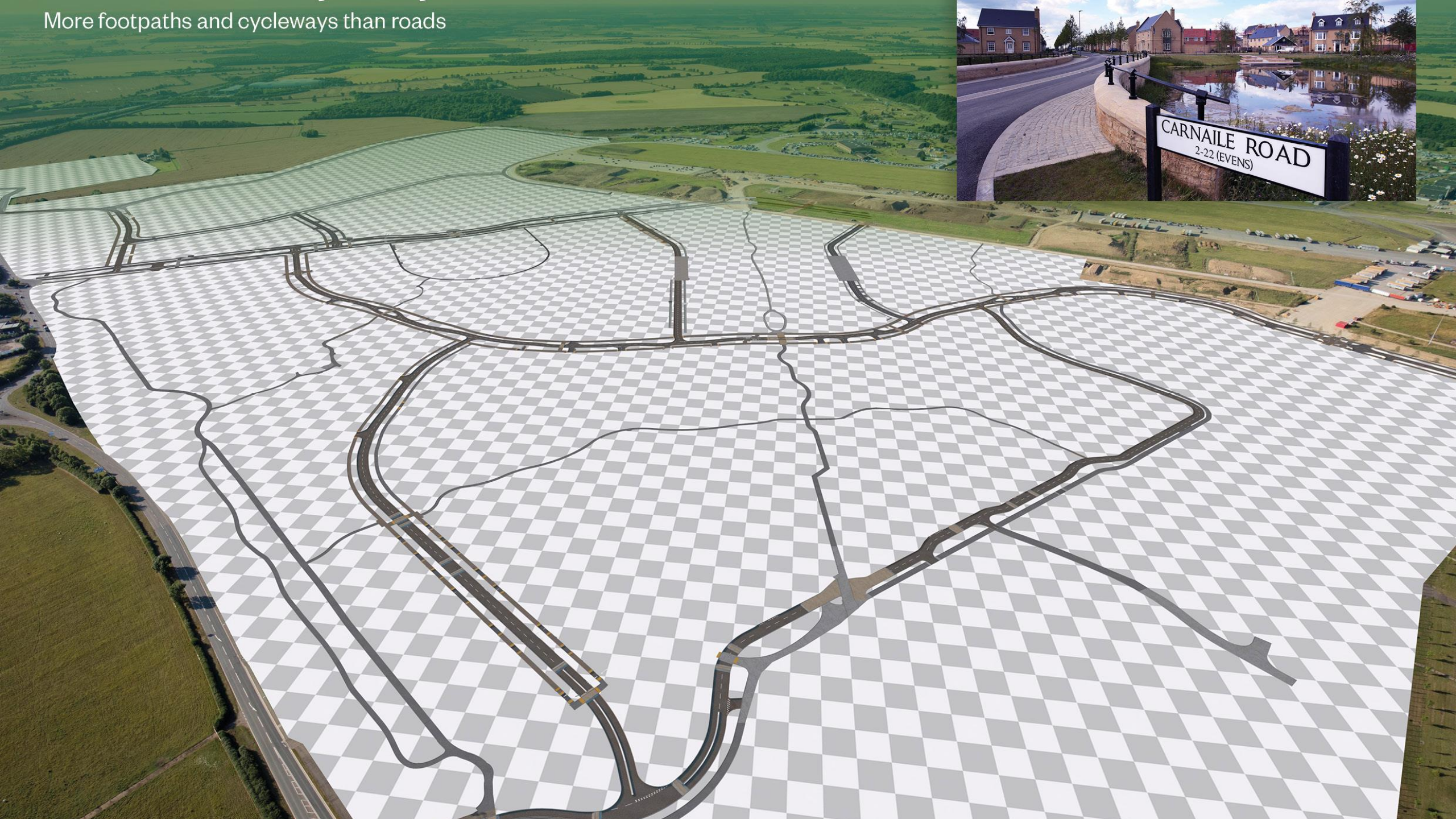
February 2015

Item	Comments	Approved
1	Design Code	<input type="checkbox"/>
2	Design Code	<input type="checkbox"/>
3	Design Code	<input type="checkbox"/>
4	Design Code	<input type="checkbox"/>
5	Design Code	<input type="checkbox"/>
6	Design Code	<input type="checkbox"/>
7	Design Code	<input type="checkbox"/>
8	Design Code	<input type="checkbox"/>
9	Design Code	<input type="checkbox"/>
10	Design Code	<input type="checkbox"/>

Pipes, wires and SUDs



More footpaths and cycleways than roads



A landscape led approach





The jigsaw comes together



It's much more than just homes



35,500
consented and
submitted homes



28km
of cycleways



10m ft²
employment floor
space



19
primary schools



5
secondary schools



2,000+
acres of open space





Universal challenges



UN Sustainable Development Goals



Five capitals approach



Climate change



Biodiversity



Health & wellbeing



Quality education



Affordable and clean energy



Decent work and economic growth



Industry, innovation and infrastructure



Reduced inequalities



Sustainable cities and communities



Responsible consumption and production



Climate action



Life on land



Physical



Social



Economic



Natural



Human



Our sustainability framework



Objectives



Action areas



Metrics



Natural Examples



Objective
An Environmental Net Gain



Action Areas

1. Enhanced Landscaping
2. Enhanced Biodiversity



Metrics/ Targets

1. 25 trees per household
2. Minimum biodiversity net gain of 25%

Framework

Toolkits



Sustainability Framework



Launched in response to:

Universal
Challenges

UN Sustainable
Development

2022



U&C launch tool kits for Carbon,
Biodiversity and Health &
Wellbeing

Carbon



Biodiversity



Health & Wellbeing



2024

SCIENCE BASED
TARGETS (SBTs)
INITIATIVE
'NET ZERO'
COMMITMENT

INTERIM
CARBON
REDUCTION
TARGETS

2025

NET ZERO FOR
SCOPE 1 & 2
EMISSIONS

2030

NET ZERO
FOR SCOPE 3
EMISSIONS

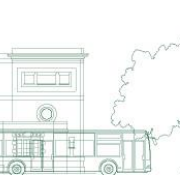
2040

Which carbon emissions are included in U&C's targets?

Scopes 1&2: Emissions
from U&C controlled
sources such as office
facilities and vehicles

Scope 3 (included): Indirect
emissions in the U&C value
chain such as embodied carbon
in building and infrastructure
built by U&C and operational
energy used by those assets

Scope 3 (excluded):
Housebuilders
embodied carbon and
resident's emissions



It's a continuous journey



Footpaths

20% lower CO2
emissions



Recycled material

15,000m³
of material
crushed and
reused in haul
roads



Cycle Paths

16km of foot
and cycleways
delivered





- Activation
- Governance
- Challenges

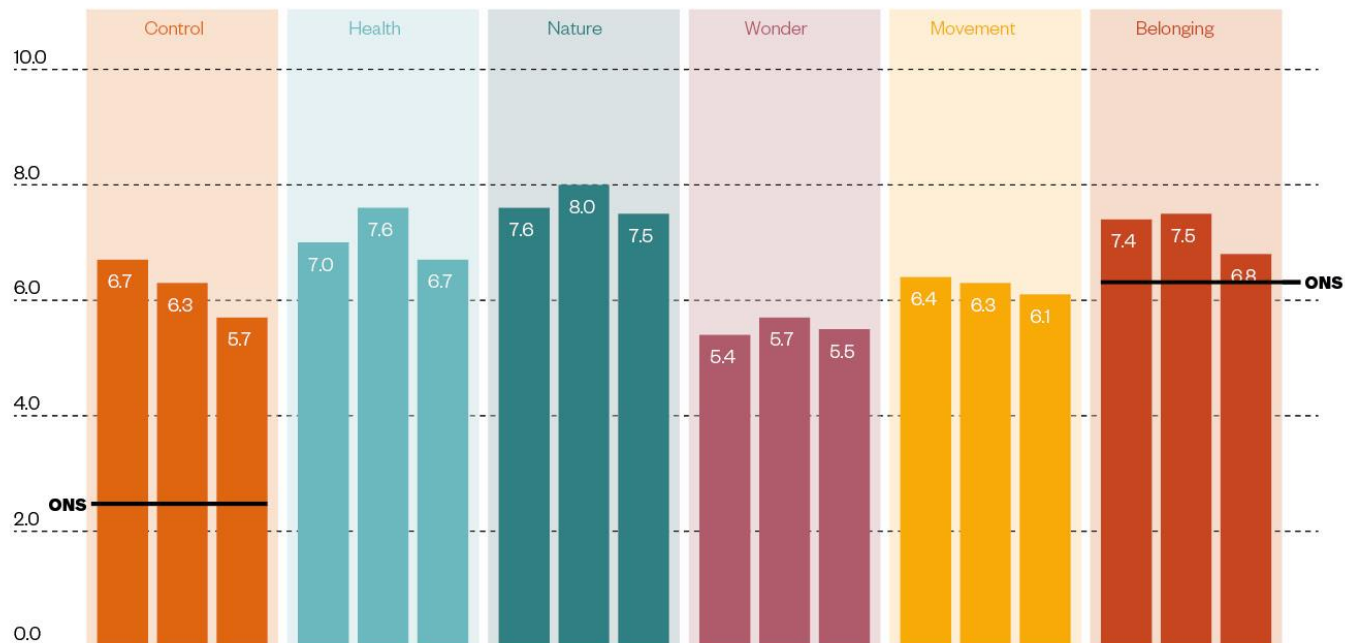




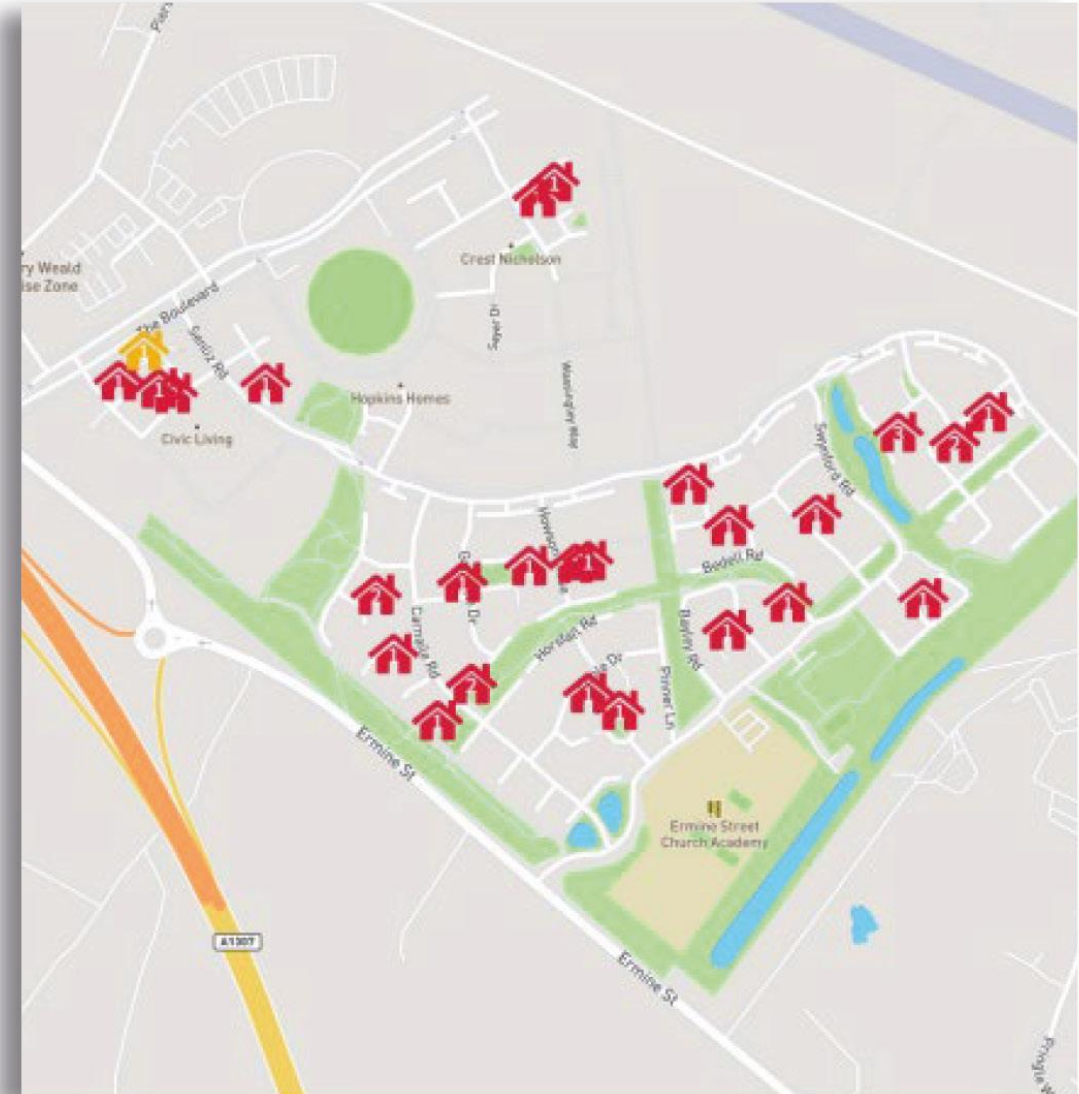




Figure 1.4: Quality of Life Framework



Map showing location of respondents in Alconbury Weald via their post codes





RTPI

Royal Town Planning Institute

Q&A

Rebecca Britton - Regional Director
Communities, Urban&Civic

Mike Jenner - Development Manager,
Urban&Civic

Chair: John Mason - Planning Consultant, Carter
Jonas

Urban&Civic