



.....

**Winners,
commended
and finalists**

.....

Contents

- 3 Welcome
- 4 Thank you to our sponsors
- 5 Excellence in Plan Making Practice
- 9 Excellence in Planning for a Successful Economy
- 13 Excellence in Planning for Health and Wellbeing
- 17 Excellence in Planning for Heritage and Culture
- 21 Excellence in Planning for the Natural Environment
- 24 Excellence in Planning for Communities (small schemes of 50 or less)
- 26 Excellence in Planning for Communities (large schemes of 50 or more)
- 30 Excellence in Digital Planning Practice
- 33 International Award for Planning Excellence
- 35 In-house Planning Team of the Year
- 39 Small Planning Consultancy of the Year
- 44 Planning Consultancy of the Year
- 48 Planning Authority of the Year
- 52 Inspirational Leader of the Year
- 56 Young Planner of the Year
- 59 RTPI Silver Jubilee Cup
- 60 Thank you to the judges

Welcome to our brochure of the winners, commended entries and finalists for the **RTPI Awards for Planning Excellence 2023**

The RTPI Awards for Planning Excellence celebrate outstanding plans, projects and people that demonstrate the power of planning. These awards continue to recognise and reward the brightest talent in the profession; the most outstanding plans, projects and people helping to transform economies, environments, and communities.



On 21st November 2023 we announced and celebrated the best of the best in the planning profession at our national awards presentation.

Congratulations to all the winners and commended entries.

We hope you enjoy this brochure and we look forward to hearing from you in January when we open for the 2024 Awards for Planning Excellence.

rtpi.org.uk/excellence



Thank you to our 2023 Category Sponsors



Inspirational Leader of the Year Pegasus

Pegasus Group is a leading national development consultancy specialising in planning, design, environment, economics and heritage. They have more than 300 skilled and experienced staff operating from 14 offices who work in collaboration with our clients to provide bespoke solutions focusing on delivering successful outcomes and maximising value. They combine local and national knowledge of the property and development industry to provide an unrivalled understanding of what is required to make schemes successful. Pegasus Group's integrated teams combine knowledge and expertise and have worked on some of the UK's highest profile projects, developing excellent relationships with their clients and winning awards in the process.

www.pegasusgroup.co.uk



Planning Authority of the Year Public Practice

Public Practice is a social enterprise with a mission to build the public sector's capacity to improve the quality, equality, and sustainability of places. Public Practice finds, selects, places and trains-built environment professionals into local authority teams. They also create opportunities for collaboration and cross-authority learning through their network, events and publications. To date, Public Practice has placed over 225 Associates in 58 public authorities across London, the South East and East of England and will now be supporting authorities in the North of England

www.publicpractice.org.uk

Excellence in Plan Making Practice Winner

Net Zero Aberdeen Routemap submitted by Net Zero Aberdeen

Developed collaboratively, the Net Zero Aberdeen Routemap and 6 enabling strategies are shaping a just net zero city transition, spanning the built and natural environment.



The judges' comments:

Judges described this project as a best practice example of drawing together a wide range of stakeholders to chart a course for achieving an ambitious net zero target for the area.

You can return to the [full list](#) of categories [here](#)

Excellence in Plan Making Practice

Finalists



AL21 land west of Windsor stakeholder masterplan submitted by Wates Developments in partnership with the Royal Borough of Windsor and Maidenhead

Wates Developments working in partnership with the Royal Borough of Windsor and Maidenhead to deliver the first Stakeholder Masterplan within the adopted Borough Local.
Image by Wates Developments.

Letterkenny 2040 Regeneration Strategy submitted by The Paul Hogarth Company and Donegal County Council

Letterkenny 2040 is an exciting and ambitious Regeneration Strategy, guiding development, responding to the climate crisis and breathing new life into the town centre.
Image by The Paul Hogarth Company, Donegal County Council.



Living Lakes - Your Local Plan 2020-2035 submitted by Lake District National Park Authority

Living Lakes: Your Local Plan creates the strategic planning framework that seeks to deliver positive outcomes for people, places and communities in the Lake District.
Image by Historic England.

You can return to the [full list](#) of categories [here](#)

Excellence in Plan Making Practice

Finalists

Statement of Community Involvement submitted by Bolsover District Council

Bolsover District Council's SCI is a leading example of how greater efforts through specific actions can encourage better engagement in the local planning process.
Image by Chris McKinney.



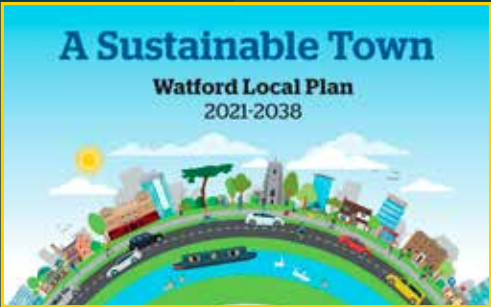
The Brent Local Plan 2019-2041 submitted by the London Borough of Brent

The Brent Local Plan is an ambitious strategy. It recognises, and responds to, the uniqueness of Brent with its diverse and varied communities and places.
Image by Studio Paul Riddle.



Watford Local Plan 2021-2038: A Sustainable Town submitted by Watford Borough Council

The Watford Local Plan demonstrates plan-making during times of adversity, resolving issues through constructive engagement and taking a design-led approach to meet development challenges.



You can return to the [full list](#) of categories here

Excellence in Plan Making Practice Finalists



York Minster Precinct Neighbourhood Plan submitted by Chapter of York

The trailblazing York Minster Precinct Neighbourhood Plan was made in June 2022 by City of York Council following successful referendum in May that year. Image reproduced by kind permission of The Chapter of York.

Join the conversation

- ✕ @rtplanners
- 📷 rtplanners
- 📘 RoyalTownPlanningInstitute
- 🗣️ rtplanning
- #RTPIAwards

You can return to the [full list](#) of categories here

Excellence in Planning for a Successful Economy Winner

Humber: Hull Frontage Flood Defence Improvements submitted by Hull City Council

A tidal flood defence scheme protecting c.133,000 properties to 2040 and beyond, balancing needs of the economy, local communities, heritage assets, and international nature conservation.

Image by Environment Agency.



The judges' comments:

Judges described this project as possibly the leading practice in flood defence work. The project overall has a direct positive impact for people and communities and is more than just an engineering project but outlines its role in becoming a project that contributes to Hull as a place.

You can return to the [full list](#) of categories [here](#)

Excellence in Planning for a Successful Economy Commended

The University of Glasgow western campus development submitted by The University of Glasgow

The University of Glasgow's £1.3 billion Campus Development Program aims to create a new sustainable and socially integrated world-class urban quarter with significant economic impact.

Image by University of Glasgow.



The judges' comments:

Judges commended this entry for its long-standing commitment to maintain the link between vision and delivery. It is a model of sustainable construction. Being strong on engagement and a well led planning project.

You can return to the [full list](#) of categories here

Excellence in Planning for a Successful Economy

Finalists



Chester Market submitted by Cheshire West and Chester Council

Chester's new Market in the city's historic core only opened in November 2022 and is already transforming the city with over 860,000 visits to date.

Image by Cheshire West and Chester Council.

Game of Thrones Studio Tour submitted by Resolve Planning & Development

The Game of Thrones Studio Tour at Linen Mill Studios in Banbridge, Northern Ireland delivers a world-class tourist attraction in a repurposed former linen mill.

Image by Linen Mill Studios / Warner Media.



One Strawberry Lane submitted by Lichfields

One Strawberry Lane forming Home Group's new office Headquarters, including a Voluntary, Community and Social Enterprise hub located in Newcastle City Centre.

Image by BAM Construction.



You can return to the [full list](#) of categories [here](#)

Excellence in Planning for a Successful Economy Finalists



Perry Barr Railway Station and Bus Interchange submitted by Transport for West Midlands, West Midlands Combined Authority, West Midlands Rail Executive, SLC-AECOM Joint Venture

Perry Barr Railway Station and Bus Interchange project has delivered a transformative scheme and acted as a catalyst for the wider regeneration of the area..

Image by West Midlands Rail Executive.

SEGRO Park Tottenham submitted by Icen Projects

SEGRO Park Tottenham is the greenest urban industrial development in London, delivering economic growth and social benefits in a high quality, sustainable manner.

Image by Michael Sparks Associates.



University of Central Lancashire Student Centre and University Square, Preston submitted by University of Central Lancashire

The University of Central Lancashire transformed its physical linkage with the City of Preston, delivering a ground-breaking programme valued at >£80million, regenerating a >10,000m² area.

Image by University of Central Lancashire.



You can return to the [full list](#) of categories here

Excellence in Planning for Health and Wellbeing Winner

Grange University Hospital submitted by BDP

BDP's long-term planning strategy adopts a plan-led approach to deliver a state-of-the-art hospital and enable the remodelling of healthcare in South Wales.

Image by Michael Whitestone.



The judges' comments:

This submission demonstrated a sustained planning-led approach to a complex health project over several years. It is an impressive example of how a long-term planning strategy can provide a high-quality essential medical facility for the local community.

You can return to the [full list](#) of categories [here](#)

Excellence in Planning for Health and Wellbeing Finalists



Day Treatment Centre - Freeman Hospital, Newcastle upon Tyne submitted by DPP on behalf of the Newcastle upon Tyne Hospitals NHS Foundation Trust

The Day Treatment Centre at the Freeman Hospital is a facility built under emergency permitted development rights to provide day surgeries and reduce waiting times. Image by Newcastle upon Tyne Hospitals NHS Foundation Trust.

Dinton Activity Centre submitted by DHA

The delivery of a new all-year round activity centre, offering education and leisure facilities, by adopting off-site construction and securing high levels of environmental performance. Image by HLM Architects.



Eastway youth sports facility submitted by Hackney Council

Eastway is an inclusive and sustainable youth sports and educational space, created by repurposing underutilised public land and co-produced with young people in Hackney Wick. Image by London Borough of Hackney, Sean Pollock.

You can return to the [full list of categories here](#)

Excellence in Planning for Health and Wellbeing Finalists

Lucy Cavendish College, Cambridge submitted by Bidwells

A sustainable new heart for Lucy Cavendish College in Cambridge, providing student rooms and social spaces to help provide higher education for the wider community.
Image by Nick Guttridge.



Mayfield Park submitted by Deloitte LLP, SEW and U+I (a Landsec Company)

Provision of Planning Consultancy services by Deloitte and landscape masterplanning by SEW in the delivery of the Mayfield Park.
Image by Richard Bloom.



The Reef Leisure Centre submitted by North Norfolk District Council

North Norfolk District Council has built a new accessible, sustainable leisure centre to encourage residents and visitors to participate regularly in more physical activities.
Image by David Millington Photography Ltd.



You can return to the [full list](#) of categories here

Excellence in Planning for Health and Wellbeing Finalists



Zetland Park Project submitted by Falkirk Council

A community driven, place making focussed park regeneration project that reaffirms the difference heritage projects can make to people's lives, wellbeing and quality of place. Image by Falkirk Council.

Join the conversation

✕ @rtplanners
 @ rtplanners
 f RoyalTownPlanningInstitute
 rtplanning
 #RTPIAwards

You can return to the [full list](#) of categories [here](#)

Excellence in Planning for Heritage and Culture Winner

Shakespeare North Playhouse submitted by Knowsley Council

A replica new build theatre within a modern cultural building celebrating connections between Knowsley, Shakespeare and Elizabethan theatre, completing the Shakespearean triangle: London-Stratford-upon-Avon-Prescot.

Image by Knowsley Council.



The judges' comments:

Judges described this project as an exceptional example of what is a genuinely planner-led scheme resulting in a high-quality, sustainable multi-purpose building. It is clear that this project has been transformative for Prescot and successfully functions as a much-loved cultural asset.

You can return to the [full list](#) of categories here

Excellence in Planning for Heritage and Culture Commended

Shrewsbury Flaxmill Maltings Main Mill and Kiln submitted by Historic England

Shrewsbury Flaxmill Maltings is the world's first iron-framed building - its restoration provides a third century of use as an exhibition, café and commercial office.

Image by Steve Baker, Historic England.



The judges' comments:

This project was commended for being an impressive example of how an important Grade I listed building can be reused to meet current requirements. The project demonstrates excellent planning practice and effective leadership and collaborative working, significant to the project's success.

You can return to the [full list](#) of categories [here](#)

Excellence in Planning for Heritage and Culture Finalists



Caernarfon Island Site submitted by Purcell

This scheme involved the repair, conservation and adaptation of the Harbour Trust's Office and associated historic workshop buildings, collectively known as Cei Llechi, Slate Quay. Image by Cei Llechi.

Enniskillen Workhouse submitted by Fermanagh and Omagh District Council

Enniskillen Workhouse: promoting history, heritage skills and understanding through restoration, providing space for business innovation. Image by Fermanagh and Omagh District Council.



GrowBanff@The Vinery submitted by Aberdeenshire Council

A restoration project bringing a derelict 19th century greenhouse back into use to provide a community hub focused on well-being and gardening. Image by Aberdeenshire Council.

You can return to the [full list of categories here](#)

Excellence in Planning for Heritage and Culture Finalists



Hall for Cornwall submitted by Burrell Foley Fischer and Cornwall Council

The refurbishment and remodelling of the Grade II* Listed Hall for Cornwall has increased its audience capacity, and conserved and restored its important heritage elements.
Image by French + Tye.

The Burges & Hale Street, Coventry High Street Heritage Action Zone submitted by Coventry City Council, Historic Coventry Trust, Historic England and Corstorphine + Wright

The Burges High Street HAZ restores a forgotten part of Coventry's historic townscape, boosting the local economy and celebrating the rich heritage inspiring civic pride.
Image by Corstorphine + Wright.



York Minster Refectory and Minster Yard Public Open Space submitted by Savills (UK) Ltd

Savills achieved planning permission and Listed building consent for the change of use of the former Minster Song School (Grade II) to the Minster Refectory.
Image by Re-Form Landscape.

You can return to the [full list](#) of categories here

Excellence in Planning for the Natural Environment Winner

Mayfield Park submitted by Deloitte LLP, SEW and U+I (a Landsec Company)

Provision of Planning Consultancy services by Deloitte and landscape masterplanning by SEW in the delivery of the Mayfield Park.

Image by Richard Bloom.



The judges' comments:

Mayfield Park is an example of inclusive, proactive, visionary, and focused project led by planners with excellent community engagement and outcomes. Judges also noted the impact that this scheme has had on the natural environment of Central Manchester.

You can return to the [full list](#) of categories [here](#)

Excellence in Planning for the Natural Environment Finalists



Living in the Landscape: A framework for landscape and green infrastructure in Thamesmead submitted by Peabody and LDA Design

Living in the Landscape is a new way of thinking about place: a blueprint for how natural systems can make life better in Thamesmead. Image by Paul Upward Photography / Peabody.

North Cave Wetlands submitted by Breedon Trading Limited, MJCA and Yorkshire Wildlife Trust

North Cave Wetlands is a leading example of a sustainable, inclusive and biodiverse 21st Century nature reserve, developed in the footprint of a large quarry. Image by J Horsfall and L Davenhill, Yorkshire Wildlife Trust.



St Margaret's Bus Station submitted by Marrons

The St Margaret's Bus Station redevelopment is the first net zero carbon bus station in the UK and an exemplar for modern, sustainable travel. Image by Leicester City Council.

You can return to the [full list](#) of categories here

Excellence in Planning for the Natural Environment Finalists

The Vale of Belvoir Natural Burial Ground submitted by Fisher German

A farm diversification project involving the change of use of arable land to a natural burial ground, providing a sustainable alternative to conventional burial methods. Image by Fisher German.



Join the conversation

- X @rtplanners
 - Instagram rtplanners
 - Facebook RoyalTownPlanningInstitute
 - LinkedIn rtplanning
- #RTPIAwards

You can return to the [full list of categories here](#)

Excellence in Planning for Communities (small schemes of 50 or less) Winner

Lucy Cavendish College, Cambridge submitted by Bidwells

A sustainable new heart for Lucy Cavendish College in Cambridge, providing student rooms and social spaces to help provide higher education for the wider community.

Image by Nick Guttridge.



The judges' comments:

This project faced a number of complex challenges which were addressed head on to deliver the project on time. Judges noted that what they have achieved is an exemplar template for how to plan for diversity and inclusion.

You can return to the [full list](#) of categories here

Excellence in Planning for Communities (small schemes of 50 or less) Finalists



Beeston Goods Yard submitted by Ilke Homes Land Ltd

The Sidings is a 42 home affordable-led scheme on a vacant 2-acre brownfield site, originally a railway goods yard next to Beeston train station.
Image by ilke Homes.

Richmond Street, Manchester submitted by Oriel Planning for Watch This Space

Transformation of a compact brownfield site to provide modern family-sized townhouses.



You can return to the [full list](#) of categories [here](#)

Excellence in Planning for Communities (large schemes of 50 or more) Winner

Perry Barr Residential Scheme submitted by Birmingham City Council, Arcadis, and Arup

Council, Arcadis, and Arup The Perry Barr Residential Scheme is an exemplar for urban growth and a catalyst for change in the city, demonstrating innovation in planning and delivery.

Image by Greg Holmes/Glenn HowellsArchitects.



The judges' comments:

Judges were highly impressed by this planner-led scheme and their use of modern and creative ways to engage a wider audience. Their methods were simple but extremely effective and would benefit all projects.

You can return to the [full list](#) of categories here

Excellence in Planning for Communities (large schemes of 50 or more) Commended

Marleigh, Cambridge submitted by Greater Cambridge Shared Planning and Pollard Thomas Edwards architects

Marleigh is a sustainable urban quarter to the east of Cambridge based on a robust masterplan and a collaborative design code and planning process.

Image by Greater Cambridge Shared Planning.



The judges' comments:

Judges commended this scheme for including infrastructure in the 1st phase of the project which, created a strong sense of community from its inception.

You can return to the [full list](#) of categories [here](#)

Excellence in Planning for Communities (large schemes of 50 or more) Finalists



Bayside, Worthing submitted by ECE Planning Limited and Worthing Borough Council

Bayside, is part of a phased regeneration masterplan, which now boasts an outstanding new leisure facility, 141 residential apartments, commercial space and public realm improvements.
Image by Tim Crocker.

East Wick and Sweetwater (Phase 1) submitted by Quod, East Wick + Sweetwater and London Legacy Development Corporation

EW+S, LLDC and Quod have worked collaboratively with local stakeholders to deliver a sustainable, mixed and balanced community that maximises the Olympic Legacy.
Image by EW+S.



Hamminkeln Place, Sedgefield submitted by Hardwick Homes Ltd, Livin Housing Ltd and Lichfields

An exceptional redevelopment of a previously developed site which has successfully supported the provision of affordable new homes for rent in a highly accessible location.
Image by Hardwick Homes Ltd.

You can return to the [full list](#) of categories [here](#)

Excellence in Planning for Communities (large schemes of 50 or more) Finalists

Primrose Place, Alloa submitted by Clackmannanshire Council

A planner-led partnership approach to giving a town a new heart where people can live well locally.

Image by Richard Newton Photography/
Campion Homes.



The Jazz Yard, St James, Waltham Forest submitted by London Borough of Waltham Forest

The Jazz Yard is a quality Council-led, mixed-use landmark development in Walthamstow, creating 83 high-quality homes (including 50% affordable) and a brand-new NHS Health Centre. Image by The Jazz Yard – Site Context
© Kilian O’Sullivan.

Woodford Garden Village submitted by Lichfields

Woodford Garden Village is a pioneering high-quality residential-led mixed use development that has created a new sustainable community within the North West.

Image by Redrow Homes Limited.



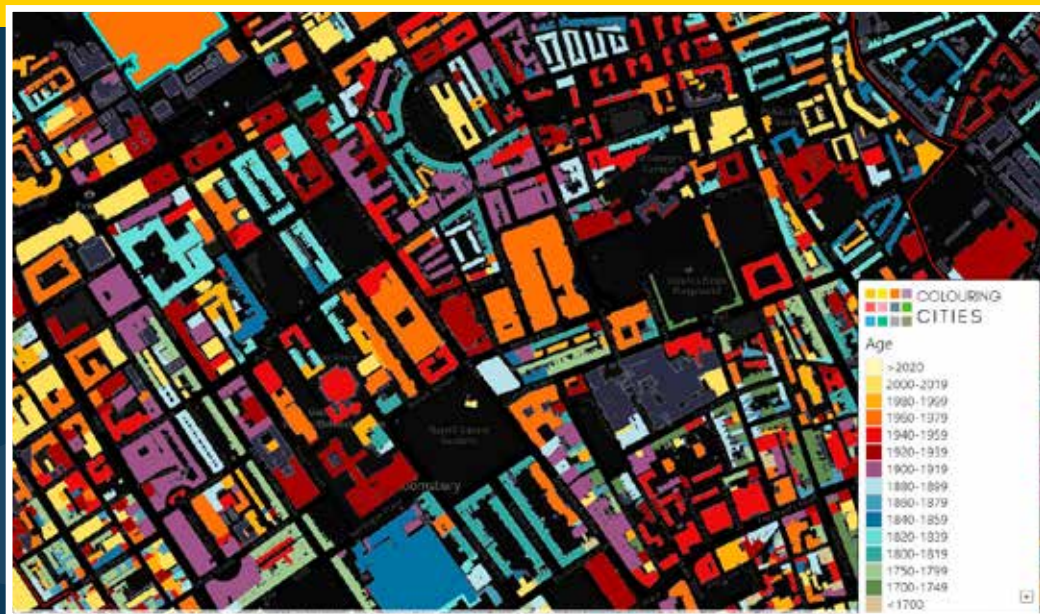
You can return to the [full list](#) of categories here

Excellence in Digital Planning Practice Winner

Colouring London Planning Visualisation (CLPV) Tool: Streaming and Visualisation of Planning Application Data submitted by The Alan Turing Institute and Loughborough University

The Colouring London Planning Visualisation tool is a reproducible open-source digital tool that visualises colour-coded geolocated data on planning applications streamed from the GLA datahub.

Image by The Alan Turing Institute.



The judges' comments:

This project uses the latest technology to continuously engage with stakeholders to deliver an outstanding example of excellence in digital planning practice.

You can return to the [full list](#) of categories [here](#)

Excellence in Digital Planning Practice Commended

PlaceBuilder Create-a-Town feature: Engaging communities creatively and digitally in the plan making process submitted by Bolsover District Council, The Future Fox and Digital Urban Place

The project team has developed a groundbreaking, web-based interactive feature to help gamify plan-making consultations and drive collaboration and engagement.

Image by Digital Urban Place.



The judges' comments:

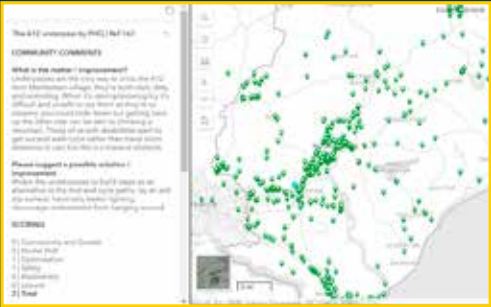
Judges commended this project for its innovative use of technology to engage hard-to-reach people and reduce misinformation in planning.

You can return to the [full list](#) of categories [here](#)

Excellence in Digital Planning Practice Finalists

East Suffolk Cycling and Walking Strategy submitted by East Suffolk Council

The East Suffolk Cycling and Walking Strategy – An innovative, digital approach to planning cycling and walking infrastructure, informed by extensive consultation and engagement. Image by East Suffolk Council.



Join the conversation

- X @rtplanners
- Instagram rtplanners
- Facebook RoyalTownPlanningInstitute
- LinkedIn rtplanning
- #RTPIAwards

You can return to the **full list** of categories [here](#)

International Award for Planning Excellence Winner

Broadway Plan submitted by City of Vancouver

The Broadway Plan is a comprehensive 30-year land use plan to integrate new housing, jobs and amenities around a new subway extension in Vancouver, Canada.

Image by City of Vancouver.



The judges' comments:

The Broadway Plan is a truly impressive project. Judges were particularly impressed by their commitment to reduce overall gas emissions, their community engagement, their innovative approaches towards affordable housing provision and their timely Plan preparation - within 3.5 years.

You can return to the [full list](#) of categories [here](#)

International Award for Planning Excellence Commended

Te Tupu Ngātahi Programme of Work submitted by Te Tupu Ngātahi

Te Tupu Ngātahi is protecting the strategic transport network in Auckland. It is the largest and most complex infrastructure planning undertaking in New Zealand's history.

Image by Te Tupu Ngātahi.



The judges' comments:

Judges commended the strong leadership, engagement and climate change commitment shown by this project. It demonstrates good examples of collaborative working, true community, and stakeholder engagement.

You can return to the [full list](#) of categories here

In-house Planning Team of the Year Winner

ABP

Associated British Ports (ABP) is the UK's leading ports group with 21 ports, supporting over 119,000 jobs in communities across the UK.
Image by ABP.



The judges' comments:

Judges described ABP as a strong, dynamic, close-knit team who go above and beyond to deliver social and environmental benefits, using traditional and imaginative techniques.

You can return to the [full list](#) of categories [here](#)

In-house Planning Team of the Year Finalists

Barratt David Wilson Homes Southampton

Barratt David Wilson Homes are a 5* housebuilder, as recognised by the Home Builders Federation, specialising in providing new homes across southern England. Image by Cooper Baillee Architects and Design.



Innova Renewables Limited

Innova develops, builds and operates renewable energy hubs. The business is committed to combatting climate change and delivering long-term social and environmental benefits. Image by Innova Renewables Limited.

Mid Ulster District Council Planning Portal Team

Mid Ulster’s Planning Portal Team delivers a fit for purpose, independent Planning Portal, on time, within budget, putting customer needs at the heart of planning. Image by Ms Karla McKinless.



You can return to the [full list](#) of categories here

In-house Planning Team of the Year Finalists

National Highways

National Highways ensures the safe and efficient operation of the Strategic Road Network to support the national economy, movement of goods, services and our customers.
Image by National Highways.



Planning Issues Limited

Planning Issues are a hardworking, successful, and enthusiastic, in-house planning consultancy who provide innovative planning procedure and solutions to their Client, Churchill Retirement Living.
Image by Planning Issues Limited.



Scottish and Southern Electricity Networks Transmission (SSEN Transmission)

SSEN Transmission's Consents & Environment team are at the forefront of delivering sustainable infrastructure across the north of Scotland assisting the Government's Net Zero targets.
Image by SSEN Transmission.



You can return to the [full list](#) of categories here

In-house Planning Team of the Year Finalists

Wates Developments

Wates Developments is the leading UK specialist in-house planning team. Part of the Wates Group with over 125 years history of place making and construction. Image by Wates Developments.



Join the conversation

- X @rtplanners
- Instagram rtplanners
- Facebook RoyalTownPlanningInstitute
- LinkedIn rtplanning
- #RTPIAwards

You can return to the [full list](#) of categories [here](#)

Small Planning Consultancy of the Year Winner

TSA Planning

TSA Planning is one of Northern Ireland's leading independent planning consultancies providing a first class service through an innovative, passionate and professional approach.



The judges' comments:

Judges applauded TSA planning for its commitment to diversity and supportive culture within the team. TSA Planning shows excellent examples of multidisciplinary working, project management and managing relationships including public engagement and first planning performance agreement.

You can return to the [full list](#) of categories here

Small Planning Consultancy of the Year Finalists



Aspbury Planning

Aspbury Planning nurtures forward-thinking planners who strive to get the best possible outcome for clients whilst shaping the places of tomorrow.

Image by Jakt Photography.

DAC Planning

DAC Planning is a highly professional planning consultancy which specialises in providing services to public sector clients and local communities nationally to support plan-making. Image by RTPI.



Delta Planning

Delta Planning is a client focused independent town planning consultancy based in Birmingham delivering a highly commercial, professional and personalised planning service. Image by Delta Planning.

You can return to the [full list of categories here](#)

Small Planning Consultancy of the Year Finalists



Edgars

The planning consultancy of choice. Edgars is built on great people, commercial acumen, modern thinking, and local authority insight. Image by Edgars.

Hourigan Planning

Hourigan Planning operate across the UK delivering major schemes through commercially informed advice, minimising client risk, maximising returns whilst delivering best practice in town planning. Image by Nick Brookman - Hourigan Planning.



Hyas Associates

Hyas are a small consultancy that work nationally town planning, masterplanning and placemaking consultancy, focussed on applying local solutions to help deliver great, sustainable places. Image by Anastasia Jobson.

You can return to the [full list](#) of categories here

Small Planning Consultancy of the Year Finalists



Hybrid Planning & Development

Just five years old, Hybrid is a planning consultancy to be admired; for the communities and positive placemaking it shapes, and its strong female leadership. Image by Image by Hybrid Planning & Development.

KEW Planning

An indigenous Welsh town planning practice, providing professional advice on site acquisition; planning strategies, preparation of planning applications and appeals. Images by Kew Planning.



MPG

MPG pride themselves on delivering successful planning outcomes which positively contribute to placemaking whilst promoting environmental improvement

You can return to the [full list](#) of categories here

Small Planning Consultancy of the Year Finalists



Origin Planning Services

Origin Planning Services is a dynamic, commercially-driven consultancy that proactively guides clients through the intricacies of the UK planning system, ensuring swift and positive outcomes. Image by Origin Planning Services.

P4 Planning

P4 Planning provides fresh thinking and proactive, pragmatic advice to help navigate the complex town planning system and make better places. Image by P4 Planning.



You can return to the [full list](#) of categories here

Planning Consultancy of the Year Winner

Quod

Quod is based in London and Leeds and is a specialist, independent consultancy at the cutting edge of planning and development economics.

Image by Merrico.



The judges' comments:

Judges were impressed by the systematic and pro-active approach to Equality, Diversity and Inclusion (EDI) that Quod have developed. The independent review undertaken to enhance their EDI activities represents a beacon for other organisations at every level to emulate.

You can return to the [full list](#) of categories [here](#)

Planning Consultancy of the Year Finalists



AECOM

AECOM is a ‘thinking’ and a ‘doing’ organisation, nurturing its diverse planning team to deliver a uniquely broad range of spatial planning and consenting projects. Image by AECOM.

Arup

Arup is an independent firm of planners, designers, and engineers operating across the built environment. Arup has 18,000 employees globally including 150 UK-based Town Planners. Image by ARUP.



Deloitte

Deloitte is a national planning consultancy which delivers complex planning projects and strategies for a range of public and private sector clients. Image by Deloitte.

You can return to the [full list of categories here](#)

Planning Consultancy of the Year Finalists



Emery Planning

Emery Planning recognises that its team's diverse skills, backgrounds, beliefs, experience and supported wellbeing, collaboratively contribute towards the success of the business. Image by Emery Planning Ltd.

Marrons

Marrons has grown dramatically over the past two years, expanding its services portfolio to respond to the requirements of the National Planning Policy framework. Image by BDP.



Savills

Savills is the largest planning consultancy in the UK, with over 350 members operating from 23 offices across all the principal regional markets. Image by Claire Newing.

You can return to the [full list](#) of categories here

Planning Consultancy of the Year Finalists

WSP

WSP is a leading UK planning consultancy working across the property and infrastructure sectors, and as part of a global engineering and professional services consultancy. Image by WSP UK Ltd - Tracey Williams.



Join the conversation

- X @rtplanners
- Instagram rtplanners
- Facebook RoyalTownPlanningInstitute
- LinkedIn rtplanning
- #RTPIAwards

You can return to the [full list](#) of categories [here](#)

Planning Authority of the Year Winner

City of London

The City of London is the Local Planning Authority for the Square Mile, the World's foremost Business centre and the engine of the UK's economy.
Image by City of London / GMJ.



The judges' comments:

The innovative approach that the City of London has taken to issues such as wind modelling, both as a topic to understand, but also to manage a formerly antagonistic relationship with stakeholders, is clear to see. The City is setting an example for cities across the world to follow.

You can return to the [full list](#) of categories here

Planning Authority of the Year Commended

Milton Keynes City Council

Milton Keynes City Council: Better by Design. Since finally being recognised as a city this branding promotes the place, its heritage and its forward-thinking attitude.

Image by Milton Keynes City Council, Planning Service.



The judges' comments:

Judges commended this entry for acknowledging adversity, being a driving force for decisive action and for advancing the planning profession.

You can return to the [full list](#) of categories here

Planning Authority of the Year Finalists



Bath and North East Somerset Council Planning

B&NES Planning are high-performing, driven to 'improve people's lives', they set ambitious policy; make high-quality decisions; give excellent service; embrace innovation; and provide team support.

Blaby District Council

Blaby District Council, in the heart of Leicestershire, is an ambitious and respected authority committed to putting the customer at the heart of everything.

Image by Blaby District Council - New Lubbethorpe.



Central Bedfordshire Council

The high achieving Strategic Growth Team develops policy and guidance to meet the needs of the community and create a more sustainable Central Bedfordshire.

You can return to the [full list](#) of categories here

Planning Authority of the Year Finalists



Sefton Council

The service responded in a unique way to the challenges of Covid to ensure Planning assisted the economic recovery of the Borough.

Image by Sefton Council Steve Matthews.

South Staffordshire Council

South Staffordshire Council has invested in its Planning Service to create a dynamic, highly skilled and positive team that is ambitious and delivers.

Image by South Staffordshire Council Planning Team, South Staffordshire Council.



Strategic Place Planning Service, Aberdeen City Council

The focus of Aberdeen City Council's Strategic Place Planning service is to enable, facilitate and deliver effective placemaking across the City.

Image by Aberdeen City Council.

You can return to the [full list](#) of categories here

Inspirational Leader of the Year Winner

Sponsored by

PEGASUS
GROUP

Caroline Harper - Be First

Caroline Harper, Chief Planning Director at Be First, has transformed the company's Place & Design team into the best performing planning team in the country.

Image by Be First.



The judges' comments:

Judges noted how Caroline is clearly enthusiastic and passionate about her role; with the ability to communicate effectively with a wide range of stakeholders - political, community or commercial. She has been crucial in driving the regeneration and transformation of the Borough. An inspirational leader and role model.

You can return to the [full list](#) of categories here

Inspirational Leader of the Year Commended

Steve Bambrick - Buckinghamshire Council

Steve leads a high performing, high functioning and customer responsive service which delivers excellent outcomes for the Buckinghamshire communities.

Image by Buckinghamshire Council.



The judges' comments:

Under Steve's leadership over the last three years, the Planning and Environment service functions of the new unitary Buckinghamshire Council have developed in a most impressive fashion. What exists here is a strong team with a strong leader.

You can return to the **full list** of categories here

Inspirational Leader of the Year Finalists



Angharad Williams

Mid Devon District Council

Angharad Williams is an exemplary and inspirational leader who endeavours to create the best and most productive working conditions for officers and members alike.



Derek McKenzie

Sefton Borough Council

Through excellent relationships with colleagues, members and stakeholders, and seizing opportunities for new initiatives, Derek McKenzie has inspired an outstanding planning service at Sefton Council.
Image by Steve Matthews



Katy Adubi

AECOM

Katy is a core member of AECOM's U+P Middle East studio, leading the delivery of strategic and transformative development projects across the Gulf region.
Image by AECOM



Kelly Harris

South Staffordshire Council

Kelly is truly a beacon for planning across the district and wider sub-region. She's an asset to the team, the Council and the profession.
Image by Kirsten Rawlins.

You can return to the **full list** of categories [here](#)

Inspirational Leader of the Year Finalists



Mark Schnull
Arrow Planning Ltd

Mark's collaborative, non-hierarchical work ethic and passion for continuity of sustainable quality development is of admiration by many. He is a champion of people!
Image by The Chiltern Rangers.



Neil Hook
Homes England

Neil is an exemplar leader, who has built positive, creative and resilient teams to deliver an ambitious programme of complex and catalytic development projects.
Image by Engage Planning/Langley Consortium.

Join the conversation

 @rtplanners
 rtplanners
 RoyalTownPlanningInstitute
 rtplanning
#RTPIAwards

You can return to the **full list** of categories here

Young Planner of the Year Winner

Joshua Singh - Sandwell Metropolitan Borough Council

Joshua's enthusiasm, passion and tenacity in making a difference to Sandwell residents and businesses is inspiring making him an ideal exemplar for future young planners.



The judges' comments:

Joshua's outstanding commitment and passion is clearly demonstrated in his innovative work in regeneration and enforcement. As a role model for future Young Planners he will benefit the profession and the communities he works within.

You can return to the [full list](#) of categories [here](#)

Young Planner of the Year Finalists



Jo Rogers

Ethical Partnership

Jo is a chartered planner with a passion for combining academia, equity in planning and specialist knowledge to create better outcomes for all of society.



Pearl Figueira

City of London

Pearl is a motivated planner that takes an innovative approach to policy making and strives to secure high quality developments for the City of London.

You can return to the [full list](#) of categories here

Young Planner of the Year Finalists



Rebecca Windemer Regen

Rebecca is a leading advocate for the important role of planners in increasing renewable energy generation. Her research has been widely used to influence change.



Sarah Purves Fife Council

Sarah is a dedicated development management planner working in Fife Council's Priority Team who epitomises the RTPI's core values in all aspects of her work.

Join the conversation

✕ @rtplanners
📷 rtplanners
f RoyalTownPlanningInstitute
🗣️ rtplanning
#RTPIAwards

You can return to the **full list** of categories [here](#)

Silver Jubilee Cup Winner

Mayfield Park submitted by Deloitte LLP, SEW and U+I (a Landsec Company)

Provision of Planning Consultancy services by Deloitte and landscape masterplanning by SEW in the delivery of the Mayfield Park.

Image by Richard Bloom.



The judges' comments:

Mayfield Park is the first new park to be provided in Manchester for over 100 years. This is a planning led project regeneration project, which provides positive economic, environmental and social benefits for the City as well as the local residents and businesses. It is designed around 5 principles of accessibility and inclusivity for all sections of the diverse community. The judges were particularly impressed with the extensive community engagement and involvement in the project, especially that of children, from an early stage in the project design. The scheme demonstrates the effectiveness of partnership and collaborative working to achieve a positive outcome on a complex site within a strong planning framework.



You can return to the [full list of categories here](#)

Thank you to the judges

Pooja Agrawal
Public Practice

Dr Husam AlWaer MRTPI
Dundee University

Charlotte Ames MRTPI
Natural Resources Wales

Ailsa Anderson MRTPI
Aberdeenshire Council

Ian Anderson MRTPI
Iceni Projects

Alison Baisden MRTPI
The Scottish Government

Mike Bodkin MRTPI
TOWN.

Susan Bridge FRTPI
RTPI President

James Brown MRTPI
The Urbanists

Niall Byrne MRTPI
Deloitte

Rob Chichester MRTPI
C2J Architects and Planners

Edward Clarke
Cheffins

Suzanne D'Arcy MRTPI
South Gloucestershire Council

Claire Day MRTPI
Hybrid Planning & Development

Isabella Day-Davies
Laurence Associates

Stephen Essex MRTPI
University of Plymouth

Simon Flisher MRTPI
Goodman International

Julia Frost MRTPI
Scott Hobbs Planning Ltd

Ian Gilbert MRTPI
Barton Willmore

Kath Haddrell MRTPI
EDF Energy

Kevin Halewood MRTPI
Liverpool City Council

Victoria Hodgson
Wiltshire Council -
Trowbridge

Judith Jones MRTPI
Merthyr Tydfil County
Borough Council

Rob Krzyszowski MRTPI
Haringey Council

Alice Lester FRTPI
Brent Council

Cat Loveday MRTPI
University of the West of
England

Simon Marsh MRTPI
Simon Marsh Planning

Nikola Miller MRTPI
The Scottish Government

Rebecca Miller MRTPI
Plymouth City Council

Hazel Nash
Rural Advisor

Louise O'Kane FRTPI
Community Places

Llinos Quelch MRTPI

Lindsey Richards FRTPI
RTPI Vice-President

Simeon Shtebunaev
Birmingham City University

Stefano Smith MRTPI
Stefano Smith Planning

Danielle St Pierre MRTPI
Hybrid Planning &
Development

Liberty Stones MRTPI
Fisher German

Olafiyin Taiwo MRTPI
University College London

Robin Tetlow FRTPI

Rob Thomas MRTPI
Vale of Glamorgan Council

Alison Thomas MRTPI
Welsh Government

Ryan Walker MRTPI
Iceni Projects

Louise Welham
Department for Levelling Up,
Housing and Communities

Lauren Whitworth MRTPI
Homes England

Angharad Williams MRTPI
Mid Devon District Council



**Look out for the 2024 Awards for
Planning Excellence in January**

rtpi.org.uk/excellence



RTPI

Royal Town Planning Institute

The Royal Town Planning Institute
41 Botolph Lane
London EC3R 8DL
England

Registered Charity Number: 262865
Scottish registered Charity Number: SC 037841