







The Finalists



Contents

- 3 Welcome
- 4 Thank you to our sponsors
- 5 Excellence in Plan Making Practice
- 7 Excellence in Planning for a Successful Economy
- 8 Excellence in Planning for Health and Wellbeing
- 9 Excellence in Planning for Heritage and Culture
- 10 Excellence in Planning for the Natural Environment
- 11 Excellence in Planning for Communities (small schemes of 50 or less)
- 12 Excellence in Planning for Communities (large schemes of 50 or more)
- 2 13 Excellence in Tech Within Planning Practice
- 14 International Award for Planning Excellence
- 15 In-house Planning Team of the Year
- 16 Small Planning Consultancy of the Year
- 18 Planning Consultancy of the Year
- 20 Planning Authority of the Year
- 21 Head Planner of the Year (Local Planning Authority)
- 22 Young Planner of the Year
- 24 Thank you to the judges

Join the conversation

-  @rtplanners
-  rtplanners
-  RoyalTownPlanningInstitute
-  rtplanning

#RTPIAwards

Welcome to the RTPI Awards for Planning Excellence 2022

The RTPI Awards for Planning Excellence celebrate outstanding plans, projects and people that demonstrate the power of planning. These awards continue to recognise and reward the brightest talent in the profession; the most outstanding plans, projects and people helping to transform economies, environments, and communities.

Here are the finalists in each category, congratulations to all.

Winners will be announced at a national awards presentation on Wednesday 30 November at the Mermaid in central London. The silver jubilee cup will be awarded to the entry judged to be the most outstanding amongst the project category winners. This must attend event will showcase and celebrate the very best of the best in the planning profession.

Book now:

rtpi.org.uk/excellence



Thank you to our 2022 sponsors

Headline sponsor



The Planning Consultancy team at WSP, having acquired Indigo Planning in 2019, is one of the leading town planning practices in the country. We have over 30 years' experience of working on and delivering planning projects throughout the UK with offices in each country. We have offices across the country with over 150 members of staff. This equates to over 500 years of planning experience, which we seek to share on all planning projects and utilise to solve problems and find innovative solutions.

We also have in-house expertise in socioeconomic, public consultation and heritage expertise, together with the wider suite of WSP environmental disciplines that we can utilise for planning projects. WSP combines the resources and expertise of a leading, town planning practice with a local understanding and a hands-on approach by the project director and project manager.

WSP is also category sponsor for Excellence in Planning for Communities (large schemes of 50 or more) and Excellence in Planning for Communities (small schemes of 50 or less).

wsp.com  @WSP_UK

Excellence in Planning for the Natural Environment category sponsor



Savills is the largest planning consultancy in the UK, with a team of over 300 members operating from 23 offices across all the principal regional markets. Our aim is to deliver planning solutions that maximise the value of our clients' property assets, taking into account the planning policy context, technical and environmental factors, local community considerations and overall sustainability. Our approach to achieving the best value outcome is founded on having a clear understanding of the client's objectives, comprehension of local policy and its interpretation, early engagement with planning officers as well as the local community and relevant councilors, and detailed negotiation of conditions and legal agreements. We provide a range of specialist services to ensure the highest standard of advice in all aspects of the planning process, including urban design, socio-economic appraisal, Heritage services, Environmental Impact Assessment, Community Infrastructure Levy and Section 106 negotiation.

savills.co.uk  @savills

Planning Authority of the Year category sponsor



Public Practice is a social enterprise with a mission to build the public sector's capacity to improve the quality, equality, and sustainability of places. Public Practice finds, selects, places and trains-built environment professionals into local authority teams. They also create opportunities for collaboration and cross-authority learning through their network, events and publications. To date, Public Practice has placed over 225 Associates in 58 public authorities across London, the South East and East of England and will now be supporting authorities in the North of England.

publicpractice.org.uk  @practicepublic

Small Planning Consultancy of the Year category sponsor



Optimis Consulting is an award-winning planning and development consultancy, specialising in residential-led developments. We have sponsored the category of RTPI Small Planning Consultancy of the Year since 2018 and are delighted to be sponsoring this category again in 2022. As a former winner of this competitive category in 2017, we congratulate all of the finalists who have demonstrated their undoubted talents to the RTPI judging panel and wish them the very best of luck.

optimis-consulting.co.uk  @OptimisInfo

Excellence in Plan Making Practice Finalists



The Baltic Triangle SRF submitted by LDA Design
The Baltic Triangle SRF sets a strategic vision and planning framework for Liverpool's coolest neighbourhood, defining a future which framed by creativity, liveability and prosperity.



Clyst Valley Regional Park Masterplan submitted by East Devon District Council
The multi-disciplinary team from East Devon District Council has transformed good planning policy into good practice, giving the fledgling Clyst Valley Regional Park wings.



Edinburgh City Centre Transformation submitted by Jacobs
Edinburgh City Centre Transformation is an ambitious plan for a vibrant people-focused capital city centre to improve community wellbeing, economic vitality and the cultural experience.



Holme-next-the-Sea Neighbourhood Plan submitted by Holme-next-the-Sea Parish Council
A community-led plan providing an innovative approach to meeting the significant and complex challenges threatening the sustainability of a small Norfolk Coast AONB parish.



Housing Delivery Programme submitted by City of York Council and Mikhail Riches with Tibbalds, Civic, Turner & Townsend, Urbed, Warm, LEDA and ImaginePlaces
York's Housing Delivery Programme responds to housing need, tackling the climate crisis by delivering mixed tenure, net-zero carbon housing across council owned sites within York.



Nottingham Design Quality Framework submitted by Nottingham City Council
The Design Quality Framework is a series of design guides and quality evaluation tools applicable to all kinds of projects during design and planning processes.

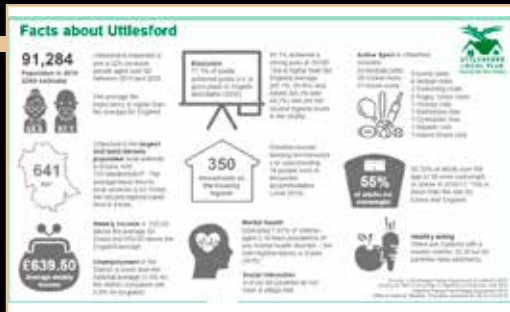


Smethwick to Birmingham Corridor Framework Document and Grove Lane Masterplan submitted by Birmingham City Council, Sandwell Metropolitan Borough Council, Tibbalds Planning and Urban Design
The Smethwick to Birmingham Corridor Framework and Grove Lane Masterplan united stakeholders to deliver coordinated planning and transport improvements in this major regeneration corridor.



Sustainable Construction Supplementary Planning Document 2021 submitted by Milton Keynes Council
The Sustainable Construction Supplementary Planning Document provides developers with plain guidance on meeting local sustainability policy criteria and sets a leading example for closing the performance gap.

Excellence in Plan Making Practice Finalists



Uttlesford Community Stakeholder Forum
submitted by **Uttlesford District Council**
An online initiative, engaging with representative interest groups, to explore innovative ideas on creating a sustainable, inclusive and responsive net zero carbon future.



Winchester City Council Local Plan Consultation
submitted by **Winchester City Council**
Designing a Local Plan consultation is always challenging but was compounded by national lockdown. The outcome has been positive and inclusive with record responses received.

Join the conversation

- @rtplanners
- rtplanners
- RoyalTownPlanningInstitute
- rtplanning

#RTPIAwards

Excellence in Planning for a Successful Economy Finalists



The Box submitted by Plymouth City Council

The Box brings together museum, archive, local studies, film and photographic collections, crafted from 3-listed buildings organised around a dramatic new extension and piazza.



Bus Station, Whitehaven submitted by Copeland Borough Council

The Bus Station development is pivotal in Whitehaven's transformation. Repurposing Whitehaven's historic gateway art-deco Bus Station to be Cumbria's flagship digital and creative hub.



Circle Square Masterplan submitted by Deloitte

The Circle Square Masterplan is an exemplar of successful regeneration, transforming an area of brownfield land into a thriving mixed-use community.



City Hall submitted by Cundall

City Hall is an iconic contribution to significant regeneration of the Riverside Sunderland Masterplan which has facilitated positive change for people and businesses. Image by Ben Clarkson.



Fraserburgh 2021 Project submitted by Aberdeenshire Council

The project was to transform the image, quality and economic vibrancy of the commercial core of Fraserburgh by investing in the unique built heritage. Image by Simon Kennedy.



The Hub at DIRFT submitted by Lichfields and Prologis UK Ltd.

The Hub at DIRFT is a unique, socially geared project that will deliver economic growth by advancing skills, expertise and capabilities in the logistics sector. Image - Prologis UK Ltd.



Lowestoft Eastern Energy Facility submitted by ABP, East Suffolk Council and the MMO

LEEF demonstrates exemplary partnership working on an important, complex project that will bring jobs and prosperity to Lowestoft whilst enabling the UK's clean energy transition.



Merthyr Tydfil Transport Interchange submitted by Merthyr Tydfil County Borough Council

Merthyr Tydfil Transport Interchange is an iconic building providing the future for public transport, with leading sustainable features and a community driven delivery.

Excellence in Planning for Health and Wellbeing Finalists



Alexander Stadium Redevelopment submitted by Arup

Reimagining a stadium to create a modern, dynamic venue to support both international and community participation alike.



Gortin Glen Forest Park - A Sustainable Family Orientated Outdoor Experience submitted by Fermanagh and Omagh District Council

Development enhancements to make Gortin Glen Forest Park a sustainable family-friendly outdoor recreation resource for residents and visitors.



Safety of Women and Girls Project submitted by Arup

The London Legacy Development Corporation and Arup have collaborated on a to improve the safety of women and girls across the former Olympic Park site. Image by LLDC.



Maggie's Centre, Leeds submitted by Leeds City Council

Maggie's Centre, Leeds exemplifies successful collaboration in Planning to create a highly attractive, sustainable community facility, providing vital, inclusive support for people affected by cancer.



South Point Primary School submitted by Vale of Glamorgan Council

South Point Primary School, the first net-zero carbon in operation school in Wales.



St. Sidwell's Point submitted by Exeter City Council

St. Sidwell's Point sets new standards for energy performance and reflects Exeter City Council's no-compromise approach to quality, sustainability and community.



Waterfront Place submitted by Dundee City Council

Waterfront Place is a major civic space that excites, encourages a range of active uses and engages all who choose to explore the wider waterfront. Image by Mark Thomas.



The Whitehill & Bordon Green Loop and Wayfinding Project submitted by East Hampshire District Council

The Green Loop with its waymarkers is encouraging residents to travel on foot, by bike, or even scooter, contributing to better physical and mental health.

Excellence in Planning for Heritage and Culture Finalists



The Box submitted by Plymouth City Council

The Box brings together museum, archive, local studies, film and photographic collections, crafted from 3-listed buildings organised around a dramatic new extension and piazza.



Bus Station, Whitehaven submitted by Copeland Borough Council

The Bus Station development is pivotal in Whitehaven's transformation. Repurposing Whitehaven's historic gateway art-deco Bus Station to be Cumbria's flagship digital and creative hub.



The Fife Pilgrim Way submitted by Fife Coast and Countryside Trust

The Fife Pilgrim Way is a new, 64-mile long, fully way-marked, interpreted and actively managed heritage walking route themed around Fife's rich medieval heritage.



Fraserburgh 2021 Project submitted by Aberdeenshire Council

The project was to transform the image, quality and economic vibrancy of the commercial core of Fraserburgh by investing in the unique built heritage. Image by Simon Kennedy.



Houlton School submitted by David Lock Associates, Urban&Civic, Rugby Borough Council

Houlton School: a universally acclaimed and exceptional scheme that restores and brings new life to a listed building at the heart of a new community. Image by James Brittain.



Park Hill submitted by Places for People and Urban Splash

Park Hill, an iconic building has been regenerated enhancing its fabric so it can better meet residents' needs and introduced a range of uses and tenures.



The Restoration of Auckland Castle submitted by Durham County Council

Auckland Castle, home to the Prince Bishops, has been restored to become the anchor for the new visitor destination in Bishop Auckland.



RHS Garden Bridgewater submitted by Barton Willmore

Bringing new life to the historic grounds of Worsley New Hall, RHS Garden Bridgewater creates a major new destination garden to treasure, inspire and excite. Image by Tom Stuart-Smith.

Excellence in Planning for the Natural Environment Finalists

Sponsored by



Central Park Hub submitted by Plymouth City Council

A Plymouth City Council partnership project transforming a public greenspace into an environmentally and financially sustainable city asset for nature connection and health and wellbeing. Image by Andrew Clanfield.



Edinburgh Strategic Green Blue Network submitted by Atkins

The Edinburgh Strategic Green-Blue Network holistically considers nature-based solutions at a strategic scale to underpin future change and development as part of Edinburgh Cityplan 2030.



The Floating House submitted by Elliott Architects Ltd.

The Floating House is a new build house in the greenbelt which demonstrates sustainable, innovative design on a challenging rural site.



Leeds Skelton Lake Services submitted by Spawforths

Leeds Skelton Lake Services provides essential highway infrastructure whilst creating an iconic gateway to eastern Leeds using innovative design to deliver socio-economic and environmental benefits.



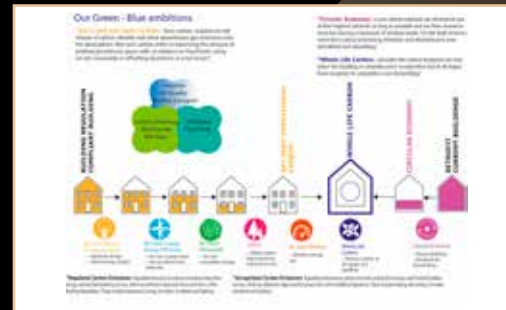
Otley Flood Alleviation Scheme submitted by WSP

WSP, Leeds City Council and the Environment Agency delivered a sensitive scheme to protect homes and businesses from flooding while enhancing biodiversity and habitats.



Our Future City Nature Plan submitted by Birmingham City Council

Birmingham as a City of Nature: Changing our municipality structure, governance, and finance to sustain and create more green spaces.



RBKC - Planning for a Green Borough submitted by Royal Borough of Kensington and Chelsea

The Royal Borough of Kensington and Chelsea's places environment at the centre of its consideration of new development proposals.

Join the conversation

[@rtplanners](#)
[rtplanners](#)
[RoyalTownPlanningInstitute](#)
[rtplanning](#)

#RTPIAwards

Excellence in Planning for Communities (small schemes of 50 or less) Finalists

Sponsored by
WSP



Colonel Wright Close, Bakewell submitted by Peak District National Park Authority
Colonel Wright Close is a high quality development of 30 affordable local needs houses on an important gateway site in the Peak District National Park.



The Gannochy Estate Housing Expansion submitted by Anderson Bell Christie
A 'Lifetime Neighbourhood' which supports a sociable intergenerational community and provides healthy, adaptable and inclusive homes for all abilities. Image by Keith Hunter.



Marple Dale, Stockport submitted by P4 Planning Limited
P4 led a successful application for developer, Seddon Homes, proposing new homes in the Green Belt that integrate with the operational care home.



Olive Morris Court, Homeless Accommodation submitted by Sphere25
A modular unit development to support 32 homeless people within Haringey, with on-site support and management, and 16 homes being gifted to the Council.



St George's Vicarage submitted by Barton Willmore
Barton Willmore assisted in the regeneration of the Site for residential uses and secured the retention of the Grade II Listed former St George's Vicarage.



Webster Court submitted by Bidwells
Webster Court provided rapid development of affordable housing to address homelessness in Norwich through dynamic partnership working with the local authority and developer. Image by Broadland Housing Association.

Join the conversation

- @rtplanners
- rtplanners
- RoyalTownPlanningInstitute
- rtplanning

#RTPIAwards

Excellence in Planning for Communities (large schemes of 50 or more) Finalists

Sponsored by
WSP



30 Harbord Square submitted by Canary Wharf Communities

30 Harbord Square is one of the first affordable apartment buildings within Wood Wharf, a new 23 acre neighbourhood within Canary Wharf.



Park East submitted by CBRE

Transformation of a tower block estate, with an inclusive community of 320 homes (80% affordable) with landscaped green spaces and strong links with adjacent communities. Image by JTP.



Phase 3 of the regeneration of the Pendleton neighbourhood (Salford) submitted by Barton Willmore

Barton Willmore has and continue to be instrumental in re-igniting the regeneration of Pendleton and breathing new life into a once neglected urban neighbourhood.



Student Residences, Campus East, University of York submitted by WSP

WSP secured approval for new colleges, using Modern Methods of Construction, at the University of York. The colleges created inclusive communities, enabling students to thrive. Image by David Millington Photography Ltd.



The Sycamores submitted by Keepmoat Homes

Situated in the heart of Stockton-on-Tees, The Sycamores - a stylish 157-home regeneration development, delivered by Keepmoat Homes in partnership with Stockton Borough Council.



Thornesgate submitted by Spawforths

Thornesgate in Wakefield provides 96 high quality new homes in a well considered public realm which supports and encourages community to come together.



Trent Bridge Quays - a new sustainable community for Nottingham submitted by Ridge and Partners LLP

Trent Bridge Quays is a brilliantly conceived regeneration project providing a sustainable community kick-starting a new wave of regeneration for the wider Waterside Regeneration area.

Excellence in Tech within Planning Excellence Finalists



City of London Thermal Comfort Guidelines submitted by City of London
The City of London have employed innovative technology to model the wind, sunlight, temperature and humidity to deliver inclusive and sustainable growth.



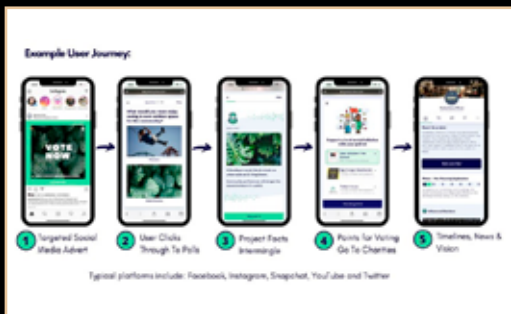
Draft Development Plan Story Maps submitted by Waterford City and County Council
Waterford Council's Draft Development Plan Story Maps visually displayed strategic spatial data that encouraged public participation in the plan making process during Covid-19.



St Cuthbert's Garden Village Interactive 360 Degree Virtual Exhibition and Promotional Video submitted by Carlisle City Council
An innovative in-house developed Virtual Exhibition Room and promotional video for the St Cuthbert's Garden Village Local Plan consultation during Covid lockdown.







Tudball, New Haringey Local Plan: First Steps Engagement submitted by London Borough of Haringey
Haringey's New Local Plan First Steps Engagement is an example of an imaginative, innovative, inclusive industry-leading approach to planning consultation.



Use of digital technologies for better planning submitted by Royal Borough of Kensington and Chelsea
Clever use of technology helps planners at Kensington and Chelsea improve engagement and outcomes for the community in their New Local Plan.

Join the conversation

-  @rtplanners
-  rtplanners
-  RoyalTownPlanningInstitute
-  rtplanning

#RTPIAwards

International Award for Planning Excellence Finalists



25 Connects: A Transit-Oriented Development Plan for West 25th Street Cleveland, Ohio, United States submitted by Stantec

This transit-oriented development plan is a best-in-class example of integrating rapid transit with contemporary planning strategies to realize community-driven ideas and attract equitable, catalytic development.



Future Ready NextGen Infrastructure Action Plan ("NextGen Action Plan") Centennial, Colorado, United States submitted by Stantec

Stantec brings multi-discipline approach to smart city focused project to develop action plan focused on adaptability and implementation with next generation infrastructure in mind.



'South Pole' Peninsula (Urban Design and Regulatory Control Planning of Jiaowei Town, Zhanjiang, China) submitted by Urban Design International Co. Ltd. (UDI)

The 'South Pole' is an idyllic coastal peninsula in China where UDi & NULDi have created a uniquely sustainable Rural Revitalization and Eco-Tourism development project.



Sustainable Urban Economic Plans submitted by Atkins

Working with Municipalities in Kenya, Atkins created a series of urban economic plans to transform each Municipality into a green growth hub.



Te Whaihanga - Building Capacity to Decolonise Planning Aotearoa New Zealand submitted by Reeves and Associates

Te Whaihanga, a planning led, multi-disciplinary project designed to better prepare built environment professionals to work with Māori, the indigenous people of Aotearoa New Zealand.

Join the conversation

- 🐦 @rtplanners
- 📍 rtplanners
- 📘 RoyalTownPlanningInstitute
- 🎧 rtplanning

#RTPIAwards

In-house Planning Team of the Year Finalists



NHS Property Services
Specialist in-house town planning team, championing town planning within the NHS by providing expert, comprehensive and robust planning advice to optimise the NHS estate. Image by NHSPS.



ilke Homes
ilke Homes are one of the UK's largest volumetric modular house builders at the forefront of delivering sustainable and beautiful homes using MMC.



Vistry Group
Vistry Group is a top five housebuilder with a purpose to develop sustainable new homes and communities across all sectors of the UK housing market.

Join the conversation

- @rtplanners
- rtplanners
- RoyalTownPlanningInstitute
- rtplanning

#RTPIAwards

Small Planning Consultancy of the Year Finalists

Sponsored by



Arrow Planning

As a small business, Arrow is more flexible and adaptable than larger practices. The team is actively encouraged to innovate and use size and agility as strengths.

Chris Jones Regeneration

Chris Jones is a chartered town planner and place practitioner based in Abergavenny, Monmouthshire, with a focus on making things happen in towns and communities.

Eldnar Consultancy

Eldnar Consultancy - they do not pretend to be a massive company, nor do they intend to be the biggest – just one of the very best. Image by Eleni Randle.

Ethical Partnership

Ethical Partnership is a planning and sustainability consultancy incorporating three values - people, planet and equitable profit. We work with clients who share these values.



Feria Urbanism - 2021 team

Feria Urbanism's co-creative philosophy is enabling and gives people a voice. They make plans and build places from local knowledge, aspiration, and collective dreaming.

Juno Planning & Environmental

Juno Planning prides itself on delivering successful planning outcomes for notable projects which make positive contributions to society, the environment and the economy.

Kevin Murray Associates

Kevin Murray Associates is a specialist consultancy in strategic visioning, action planning and research, facilitating progressive stakeholder and community engagement inputs into the planning process.

Lawson Planning Partnership

Versatility, inclusivity and professionalism underpin LPP's approach to delivering sustainable development and providing an exemplary planning service to its clients.

Small Planning Consultancy of the Year Finalists

Sponsored by



NTR Planning
NTR Planning strives to put its love of the profession first. Passionate, intelligent, resilient, thoughtful. Working hard to make planning accessible and better for all.



Urban Imprint
Urban Imprint is a personable, multi-disciplinary team with an exceptionally diverse and successful portfolio. 2022 marks ten years of hard-work, creativity, integrity and care.



Urbana
Urbana is a town planning, urbanism, and development consultancy. They make unique places using passion and expertise, delivering results for clients and the built environment.

Planning Consultancy of the Year Finalists



Deloitte
Deloitte is a national planning consultancy which delivers complex planning projects and strategies for a range of public and private sector clients.



DHA Planning Ltd – 2021 team
The South East's largest independent multi-disciplinary planning consultancy, DHA offers town planning & development, transport, design, environmental impact, infrastructure and land from Maidstone and Crawley.



hgh Consulting
hgh is a creative and independent consultancy that guides clients through the complexities of the planning system, with a strong track record of success.



HTA Design LLP
HTA Planning is part of a multi-disciplinary design practice specialising in residential-led urban regeneration projects, leading innovation, complemented by their research, and thought leadership. Image by HTA Design LLP.



Lichfields
Lichfields is the pre-eminent planning and development consultancy in the UK. The company has been helping create great places for 60 years.



LUC
LUC is an award-winning environmental consultancy providing planning, impact assessment, landscape design, ecology, historic environment, transport and geospatial services to public and private sector clients.



Nexus Planning – 2021 team
Nexus Planning is a highly skilled team of planning and regeneration consultants, providing market-leading planning, regeneration and development advice to the private and public sectors.



P4
We're a team of hard working, proactive and pragmatic planners who cut through the complexities of the planning system and provide straightforward advice.

Planning Consultancy of the Year Finalists



Quod – 2021 team

Quod is a specialist, independent consultancy at the cutting edge of planning and development economics.



WSP

WSP Planning Consultancy team is unique in its focus on people; communities and delivering long lasting and impactful solutions to uniquely complex problems.

Join the conversation

-  @rtpiplanners
 -  rtpiplanners
 -  RoyalTownPlanningInstitute
 -  rtpiplanning
- #RTPIAwards

Planning Authority of the Year Finalists

Sponsored by
PUBLIC PRACTICE



Birmingham City Council

Birmingham's planning approach is centred around achieving net zero carbon across the city and ensuring equality for all through levelling-up.



Halton Council

Halton's Planning Service is small in number, but big in ambition, showcasing some big infrastructure, sites, and an emerging local plan.



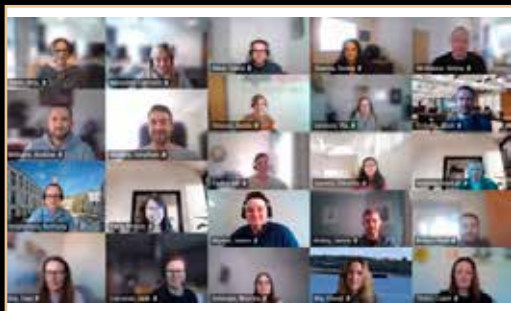
London Borough of Redbridge

Redbridge's planning service has undergone a transformation involving difficult questions, uncomfortable change, and new ways of working - all to provide an outstanding community service.



London Borough of Tower Hamlets - Strategic Planning

The Tower Hamlets Strategic Planning service develops policy and guidance to manage high levels of growth and meet the needs of the local community.



Salford City Council




Salford are an inclusive team that are bold, brave and passionate about creating a better, fairer Salford for all. They aspire to be the best.



Sedgemoor District Council

Sedgemoor District Council is a pro-growth and proactive local authority which is committed to equity, its staff and supportive of continued development and performance.

Join the conversation

-  @rtplanners
-  rtplanners
-  RoyalTownPlanningInstitute
-  rtplanning

#RTPIAwards

Head Planner of the Year (Local Planning Authority) Finalists



Jeni Jackson
Chief Planning Officer
Richmond and
Wandsworth SSA

Jeni is positively passionate about planning, thinks strategically and innovatively and uses her influence, knowledge, and passion for place well within the organisation.



Jonathan Bell
Head of Development
Planning Plymouth City
Council





Jonathan has personally led a number of award-winning initiatives that have pushed the boundaries of creativity and innovation in what planning can achieve for people.



Karen Syrett
Lead Officer for Planning
and Place Strategy
Colchester Borough
Council

Karen is a born leader. She is firm but fair with true dedication to the role. The hardest working Senior Manager at Colchester Borough Council.

Join the conversation

-  @rtplanners
-  rtplanners
-  RoyalTownPlanningInstitute
-  rtplanning

#RTPIAwards

Young Planner of the Year Shortlisted entrants



**Melissa Balk
Davidsons Homes**
Melissa is an inspiring young planner with a range of experience who is advocating for the inclusion of mental health and wellbeing in planning policy.



**Nia Borse
Fisher German**
Nia is a vibrant young planner immersed in the English and Welsh planning systems, committed to promoting planning and the RTPI in the agricultural industry.



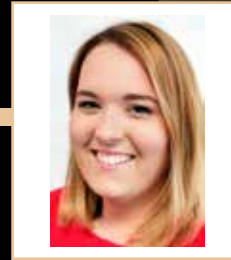
**Kate Coventry
LRM Planning Ltd**
Kate is an enthusiastic Young Planner who works across Wales and England within residential development. She plays a key role in Young Planners in Wales.



**Dominic Crowley
Lichfields**
Dominic is an enthusiastic and innovative young planner who was instrumental in leading the 2019 National Young Planners Conference in his role as Chair.



**Jess Glover
Pure Town Planning**
Jess is Chair of the Dorset Young Planners and a Senior Planner. Her enthusiasm and professionalism shine and encourage those lucky enough to meet her.



**Jessica Herritty
Turley**
Jessica is an Associate Director at Turley based in their Midlands office and a co-Chair of the Women in Planning East Midlands Committee.



**Zoe Knott
Gleeson Land**
Zoe Knott is a Planning Manager with passion and drive for promoting planning and sustainable placemaking, currently working at Gleeson Land.



**Donna Lyle
Turley (Belfast)**
Donna Lyle is a Senior Planner at Turley, Belfast, and is the founder of the Women in Planning Network in Northern Ireland.



**Abbie Miladinovic
Chesterfield Borough Council**
Abbie is technically excellent with an enviable track record on Neighbourhood Planning and engagement and is accomplished at seizing the initiative to make things happen.



**Olivia Pemberton
Eden Planning**
Olivia is a Senior Planner at Eden Planning providing bespoke advice on projects across the North West, working also for Flintshire Council as Case Officer.



**Amy Powell
Edgars**
Amy Powell is a Planner at Edgars. Her passion and dedication to planning and sustainable outcomes is inspiring to clients and with those she works.



**Frances Summers
Dorset Council**
Frances is a Woman of Influence 2021. She is committed to social equality, digital innovation and inspiring the next generation of planners.



**Sara Sweeney
Kitewood Estates**
Sara is a highly driven and capable young planner. She is passionate about her work, the profession and is a champion for diversity and inclusion.



**Jane Tennant
Geddes Consulting**
Jane Tennant is a committed, enthusiastic and engaged young planner who deserves to be recognised for her hard work and dedication to the profession.

Young Planner of the Year Shortlisted entrants



Abigail Upton
DLP Planning Ltd
Abigail Upton is a Planning Consultant striving to encourage young people and students into planning and to help connect young professionals in the wider community.



Alastair Welch
Defra
Alastair is passionately involved with marine planning's formative years, champions the environment and was the Young Planners' Committee Vice Chair including for the 2019 conference.



Antonia Wyatt
Fisher German
Antonia is an outstanding young planner dedicated to raising the profile of RTPI in the infrastructure sector through excellent client service and professional development.

Join the conversation

-  @rtplanners
 -  rtplanners
 -  RoyalTownPlanningInstitute
 -  rtplanning
- #RTPIAwards

Young Planner of the Year Finalists



Alice Jones
Birmingham City Council
Alice's positive approach results in exceptional work across complex projects, using planning tools to deliver genuinely inclusive and sustainable growth which benefits Birmingham's residents.



Bethany Jones
Colchester Borough Council
Beth's inspirational ethic toward putting planning into action has enabled her to become a role model and leader to young planners, professionals and others alike.



Rhiannon Moore
Montagu Evans
Rhiannon's passion for planning shines through everything she does. Her ambition and commitment to promoting planning as a profession across the development sector is inspirational.



Simeon Shtebunaev
Birmingham City University
Simeon's passion for an international, climate-aware and diverse planning profession has driven his advocacy for young people's engagement and multidisciplinary education of future planners.



Oscar Wong
Deloitte
Oscar is a Manager at Deloitte, specialising in major urban development and infrastructure planning. He is also on London Mayor's Young Professionals Panel and RTPI International Committee.

Thank you to the judges

Ian Anderson MRTPI
Iceni

Joe Ayoubkhani MRTPI
Highlight Planning

Alison Baisden MRTPI
Historic Environment Scotland

Kieran Blaydes MRTPI
Kingswood Homes

Clive Brook FRTPI

Rob Chichester MRTPI
C2J Architects and Planners

Heather Claridge MRTPI
Glasgow City Council

Claire Day FRTPI
Hybrid Planning & Development Limited

Viral Desai MRTPI
Atkins

Helen Fadipe MRTPI
FPP Associates Ltd

Julia Frost MRTPI
Scott Hobbs Planning Ltd

Uyen-Phan Han MRTPI
Birmingham City Council

Colin Haylock FRTPI

Russell Hughes-Pickering MRTPI
Ceredigion County Council

Dr Husam MRTPI
Dundee University

Judith Jones MRTPI
Merthyr Tydfil County Borough Council

Rob Krzyszowski MRTPI
Haringey Council

Adele Maher MRTPI
London Borough of Tower Hamlets

Catherine McEvoy MRTPI
Department for Infrastructure

Dee McGrath MRTPI
Limerick County Council

Nikola Miller MRTPI
The Scottish Government

Rob Murfin MRTPI
Northumberland County Council

Judith Onuh MRTPI
WSP

Lindsey Richards FRTPI
Homes England

Andrew Sim MRTPI
Fife Council

Danielle St Pierre MRTPI
Hybrid Planning & Development Limited

Olafiyin Taiwo MRTPI

Rob Thomas MRTPI
Vale of Glamorgan Council

Layla Vidal-Martin MRTPI
Edgars



RTPI AWARDS FOR
PLANNING
EXCELLENCE
2022

Join us for the awards ceremony on 30 November at The Mermaid, London

Book now at rtpi.org.uk/excellence



RTPI

Royal Town Planning Institute

The Royal Town Planning Institute
41 Botolph Lane
London EC3R 8DL
England

Registered Charity Number: 262865
Scottish registered Charity Number: SC 037841