



Associate membership A-APC & EP-APC¹

Key differences to the L-APC

Associate membership (AssocRTPI)

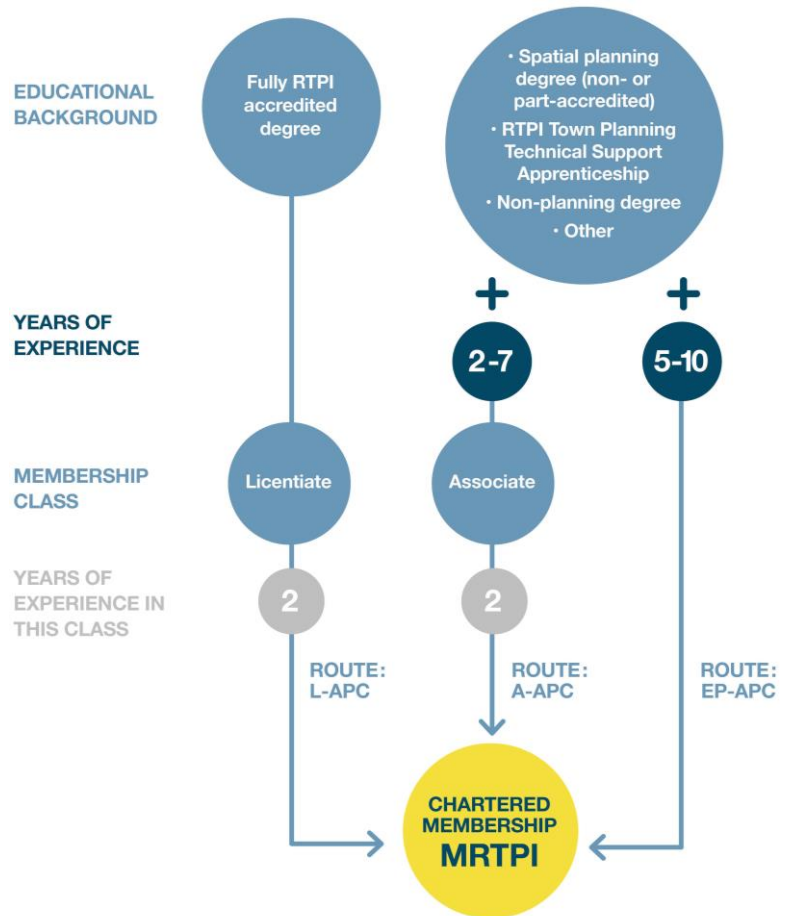
The membership class for professionals working in a related discipline or planners without a fully RTPI accredited degree.

1. Experience requirements **vary from 2-7 years** depending on the qualification held.
2. Candidates need to demonstrate, at a minimum, a working understanding of the planning system and **engagement with spatial planning**.
3. Candidates **do not complete a log book** to become an Associate (though to progress to Chartered through the A-APC they would).
4. There are **8 competencies** (3 less than the L-APC), and most need to be evidenced at a lower type:

- C1. Professional and the RTPI Code of Conduct (Core)
- C2. The spatial planning context (Understanding)
- C7. The legal framework (Awareness)
- C8. Ethical challenges (Awareness)
- C9. The political context (Awareness)
- C10. The economic context (Awareness)
- C11. Reflection and review (Understanding)
- C12. Sustainability (Understanding)

5. It is a **4,000 word written submission** (+/-10%). 1-2 case studies are required for the Professional Competence Statement (PCS).

Full details: www.rtpi.org.uk/associate



¹ A-APC = Associate Assessment of Professional Competence.
 EP-APC = Experienced Practitioner Assessment of Professional Competence.
 L-APC = Licentiate Assessment of Professional Competence



RTPI

mediation of space · making of place

Chartered membership via A-APC (MRTPI)

The route for Associate members (that are not eligible for the EP-APC).

1. Experience requirement is **2 years as an Associate member**.
2. There are **3 more competencies** than the L-APC, the additional competencies are:
 - C12. Sustainability
 - C13. Engagement and participation
 - C14. Specialist knowledge and its relationship to spatial planning
3. As part of C2. *The spatial planning context*, candidates need to **link planning theory to their case study**, demonstrating an understanding of the principles behind their practice (candidates may want to undertake further reading for this).
4. It is a **6,750 word submission** (+/-10%). **2-4 case studies** are required for the Professional Competence Statement (PCS).

Full details: www.rtpi.org.uk/aapc

Chartered membership via EP-APC (MRTPI)

The route for planners with extensive experience.

1. Experience requirements **vary from 5-10 years** depending on the qualification held.
2. Candidates do not have to be a member of the Institute before applying (though Licentiates and Associates can apply through this route if they meet requirements).
3. Candidates do not complete a log book; instead they submit **5-10 examples of their professional work** to support the claims in the written submission.
4. There are **3 more competencies** than the L-APC, the additional competencies are:
 - C12. Sustainability
 - C13. Engagement and participation
 - C14. Specialist knowledge and its relationship to spatial planning
5. As part of C2. *The spatial planning context*, candidates need to **link planning theory to their case study**, demonstrating an understanding of the principles behind their practice (candidates may want to undertake further reading for this).
6. It is a **6,750 word submission** (+/-10%). **2-4 case studies** are required for the Professional Competence Statement (PCS).
7. Candidates with significant strategic level experience, have the **option to complete C15. Leadership in spatial planning²** and **omit the following competencies**:
 - C3. Identifying and analysing issues
 - C4. Gathering appropriate information
 - C5. Identifying and evaluating a course of action
 - C6. Initiating and implementing a course of action

Full details: www.rtpi.org.uk/epapc

² If unsure whether your experience makes you eligible to take this optional competency, you are advised to take the 'standard' EP-APC route and complete C1-C14.