

# Open Space Project 2008/09

Planning for Sport Seminar

4 December 2009

Stuart Williams

# Aims

- **Create a comprehensive quantitative database of Cardiff's open space which will be used as part of the evidence base for the LDP and related Supplementary Planning Guidance on Open Space (SPG)**
- **Improve accuracy of previous studies through advanced GIS methods and aerial photography**
- **Identify current levels of open space provision in accordance with Technical Advice Note 16 (TAN16) guidance**
- **Provide the framework for a future qualitative study of Cardiff's open space**



# Background

- Last survey 1999
- 1248 sites identified during study
- 20% of the Cardiff's land mass
- Broken down into 6 open space categories



# Data Sources

- Existing data
- Aerial photographs
- Site visits

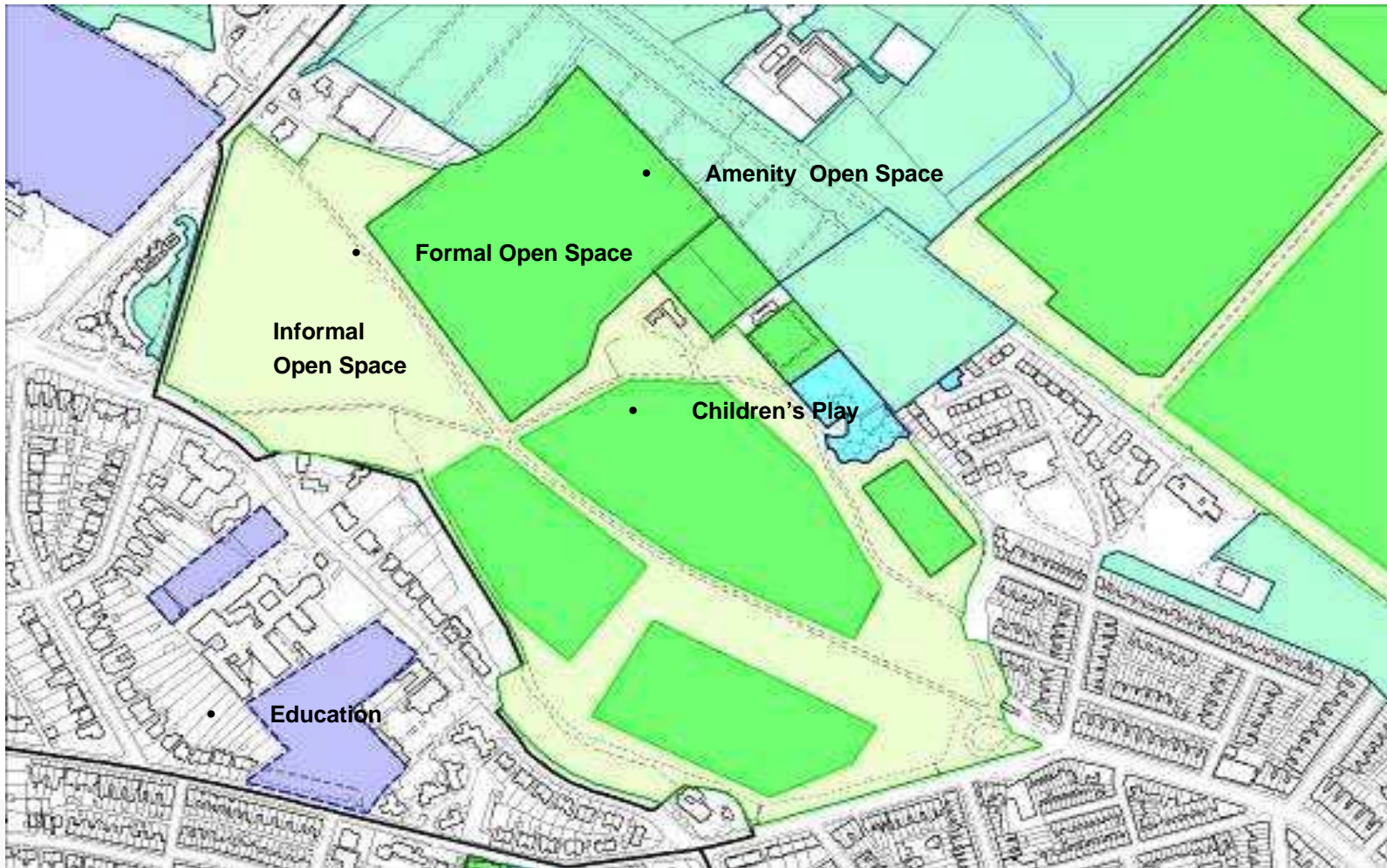


# Categories of Open Space

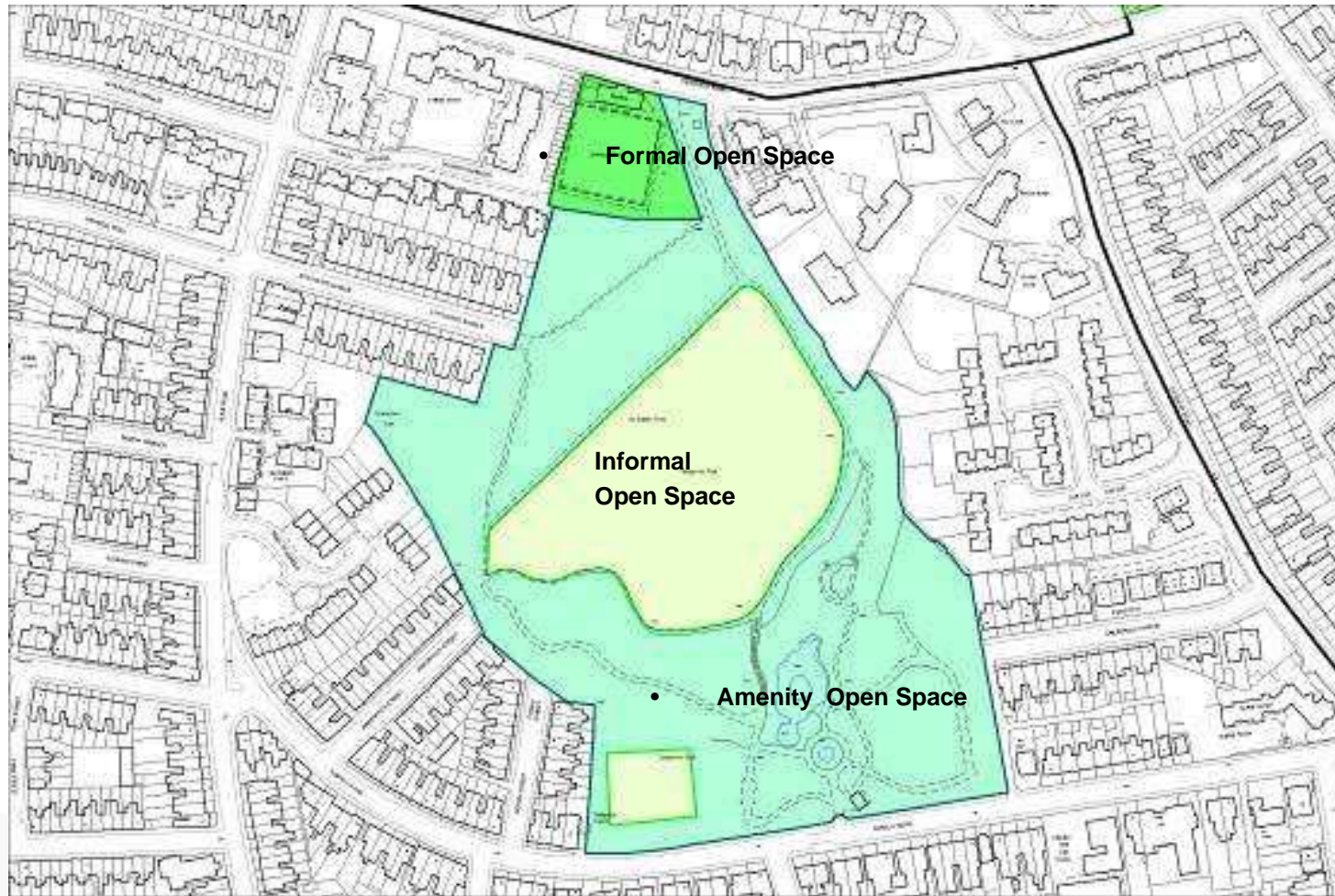
- **Formal**
- **Informal**
- **Equipped Children's Play Areas**
- **Amenity Open Space**
- **Urban Spaces**
- **Educational Land**



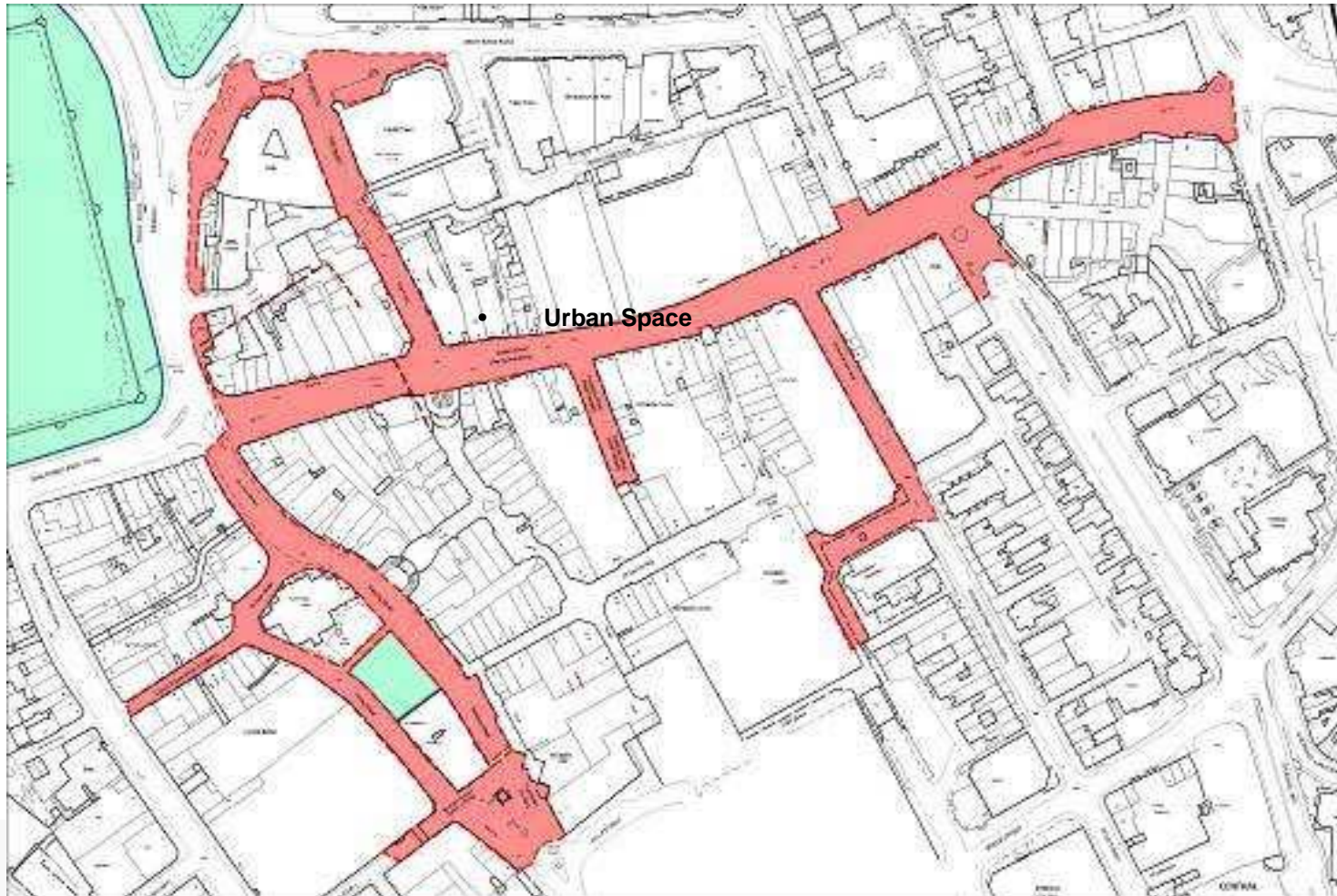
# Llandaff Fields



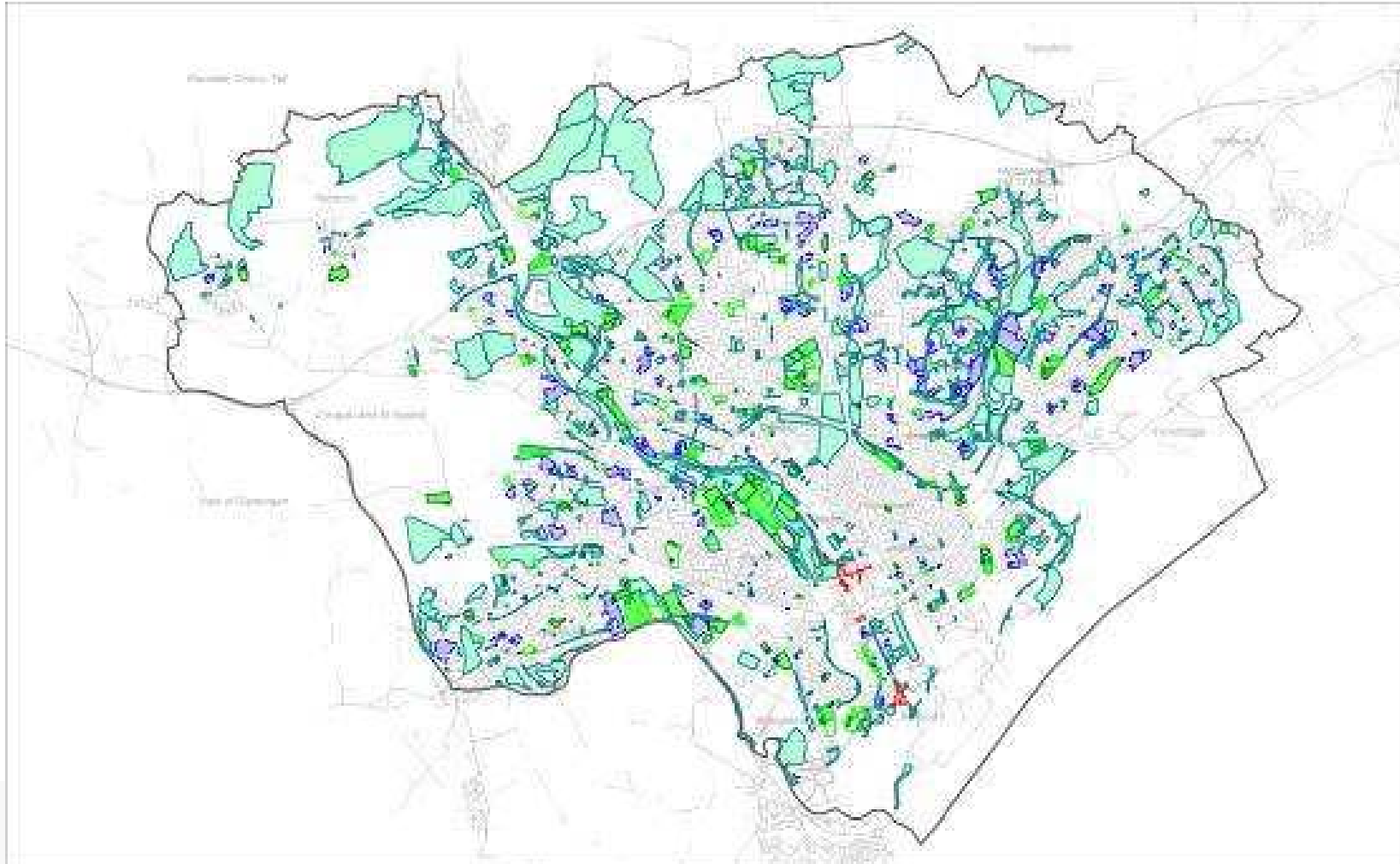
# Thompsons Park



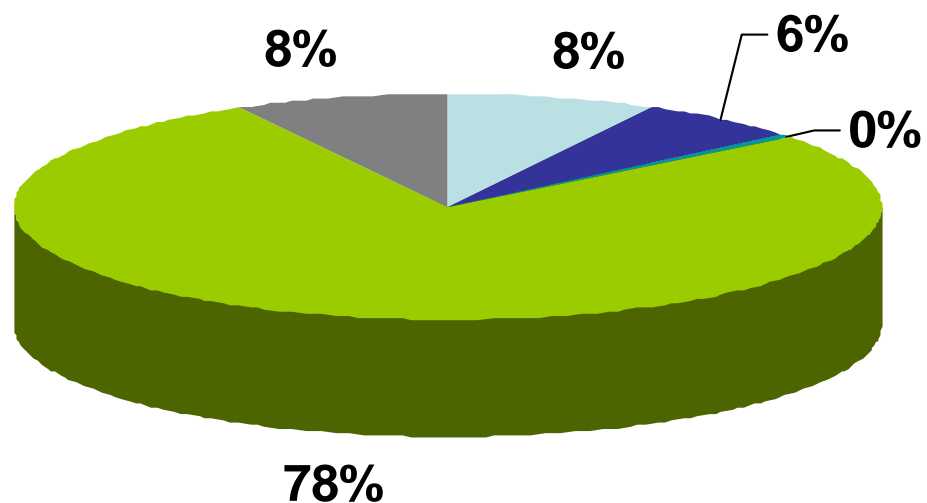
# Queen St and Woking St



# Overall Open Space Map



# Results



# Recreational Open Space Standard

- Adopted “Six acre standard” (2.4 ha per 1000 population)”
- In line with latest FIT recommendations included in TAN16
- Used by 70% of planning authorities



# Quantitative Analysis



Ward_Name	Population	Recreational Open Space (Ha)	Amenity Open Space (Ha)	Recreational Open Space standard Requirement (Ha)	Surplus/Deficit of Open Space compared to requirement (Ha)	Educational open Space (Ha)
Adamsdown	8682	1.59	1.93	21.10	-19.51	0.85
Butetown	6570	12.00	108.27	15.97	-3.96	2.08
Caerau	10726	37.08	42.70	26.06	11.01	13.40
Canton	13207	28.91	15.69	32.09	-3.19	8.41
Cathays	17501	17.85	73.65	42.53	-24.68	0.00
Creigiau / St.Fagans	5070	9.65	112.34	12.32	-2.67	1.24

# Next Steps

- Evidence Base for LDP policies both protecting existing open space and seeking developer contributions towards new provision
- Build on survey and keep up to date

