

The Corporate Response to Climate Change: A Stocktake of Severn Estuary Planning Bodies

Dr Wendy Dodds

School of Earth & Ocean Sciences, Cardiff University

Dodds1@cf.ac.uk



Format



- The IMCORE Project & the Severn Estuary Expert Couplet
- Planning Policy Review
 - Work undertaken to date (**Phase I -Policy Stocktake**)
 - Scheduled work (**Phase II**)
- Emerging thoughts on the research agenda



IMCORE Project

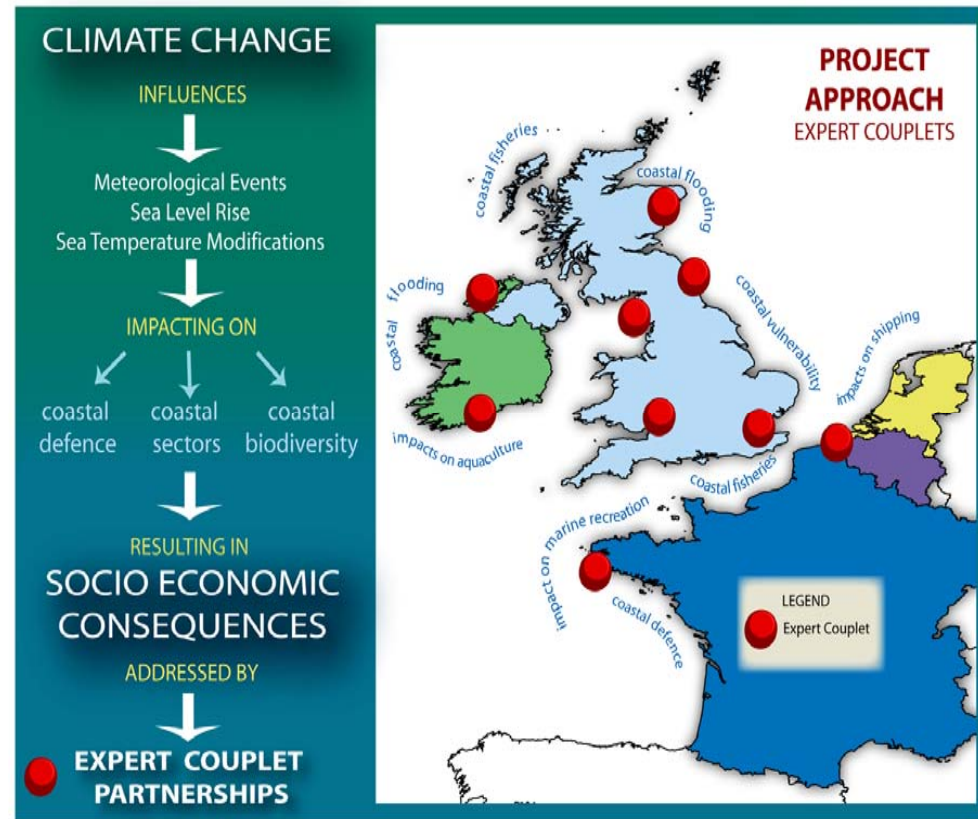
“Innovative Management of Europe’s Changing Coastal Resource”



Aims:

- To promote a transnational, innovative & sustainable approach to reducing the impacts of climate change on coastal resources
- To develop adaptation strategies for coastal sites across North West Europe
- To demonstrate the effectiveness of various approaches to climate change adaptation

www.imcore.eu



Severn Estuary ECN



Main aim:

To enhance the capacity for
Climate change adaptation in the
Severn Estuary area

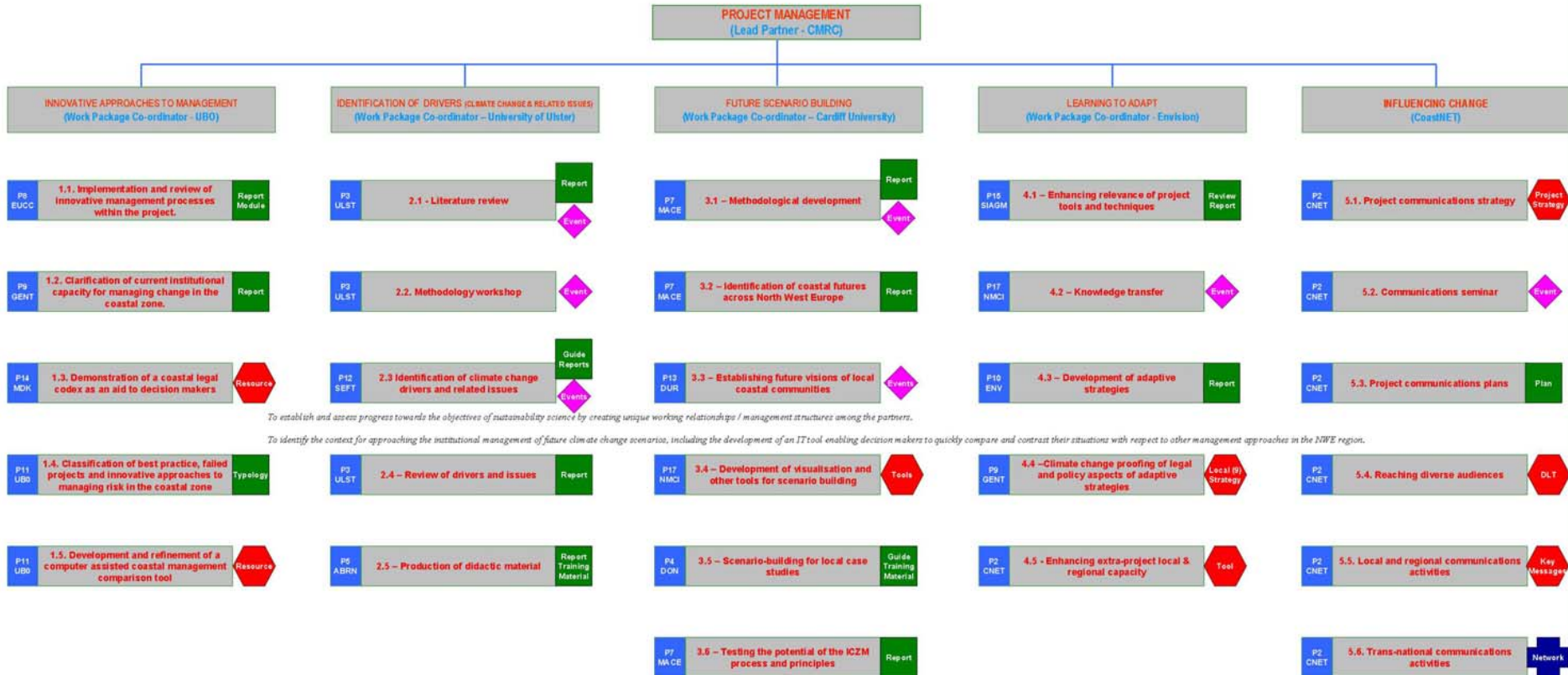
Subsidiary aims:

- To inform the development of climate change adaptation on the Severn Estuary
- To encourage joint working and improved interaction between scientists and policy makers



IMCORE Study Sites

9 Expert Couplet Nodes (ECNs)



No	Description	Abbreviation
1	Lead Coastal & Marine Resources Centre, University College Cork	CMRC
2	CoastNet	CNET
3	Centre for Coastal & Marine Research, University of Ulster	ULST
4	Donegal County Council	DON
5	Aberdeen Institute for Coastal Science and Management, Aberdeen University	ABRN
6	Cork County Council	CORK
7	Marine & Coastal Research Group, Cardiff University	MACE
8	EUCC (The Coastal Union)	EUCC
9	Maritime Institute, University of Gent	GENT
10	Envision	ENV
11	Centre for Maritime Law and Economy, University of Western Brittany	UBO
12	Sefton Council	SEFT
13	Durham Council	DUR
14	MDK Coastal Division	MDK
15	SIAGM - Intermunicipal Syndicate for Planning in the Gulf of Morbihan	SIAGM
16	Aberdeen City Council	ACC
17	National Maritime College Ireland	NMCI

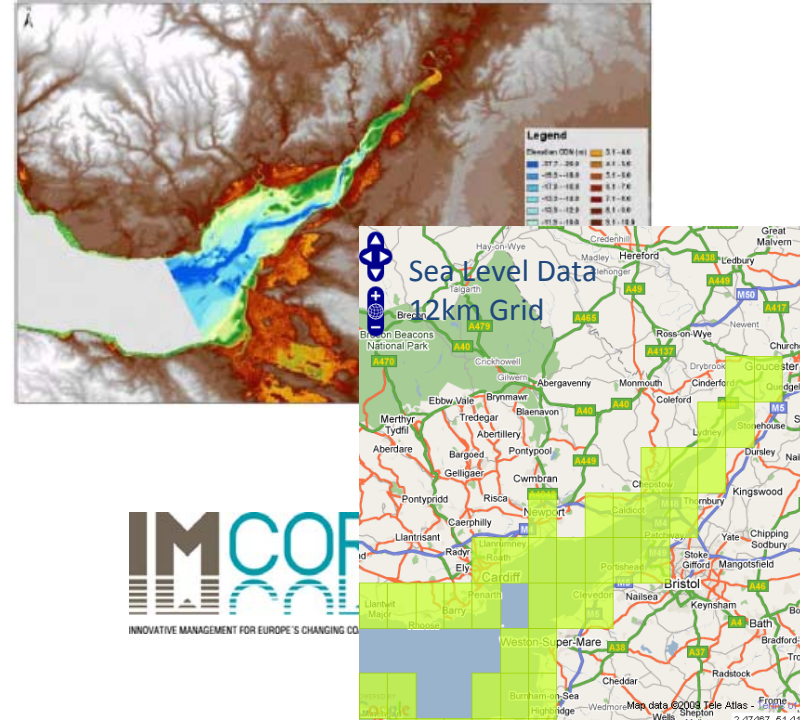
Note: virtually all the experiences catalogued and outputs produced will be utilised in the development of the Multi-media distance learning tool (Action 5.4)

IMCORE - SCHEDULE



Planning Workstream

- **Phase I** – *Corporate Responses to Climate Change on the Severn Estuary*
 - How are planning bodies around the estuary embedding climate change into their planning practices?
- **Phase II** – *Policy Integration, Science-Policy Integration*
 - What are the key issues and concerns for adapting to climate change at the coast for planning bodies?
 - How is climate change science influencing policy formulation?



Local Planning System in England

Local Planning System in Wales

Local Development Framework Portfolio

Statement of Community Involvement
Local Development Scheme
Annual Monitoring Report

Development Plan Documents

Core Strategy

Site Allocations

Area Action Plans

Proposals Map

Supplementary Planning Documents

e.g. Affordable Housing
e.g. Sustainable Design

Statement of Community Involvement
Sustainability Appraisal Report
Annual Monitoring Report

Local Development Plan

Containing:

Strategy

Policies (e.g. core, area-specific & topic based)

Proposals Map

Supplementary Planning Guidance

Management
Plans

Plans



INTERREG IVB

Phase I Methodology

Corporate Response to Climate Change

Screening for:

- Local government commitment on climate change;
- Dedicated climate change strategies; and
- Public provision of climate change information.

Planning Policy Analysis

Stocktake of Severn Estuary Plans and Policy Analysis

Policy Themes:

- Climate Change;
- Flood and Coastal Erosion Risk Management; and
- Estuary Management.

Criteria for Analysis:

- Policy occurrence;
- Critique of policy content and
- Geographical coverage

Historical Policy Analysis

Comparison of current survey with 'A Review of Development Plans in the Severn Estuary Strategy Area: 1999 Update' (Ballinger *et al.*, 1999).

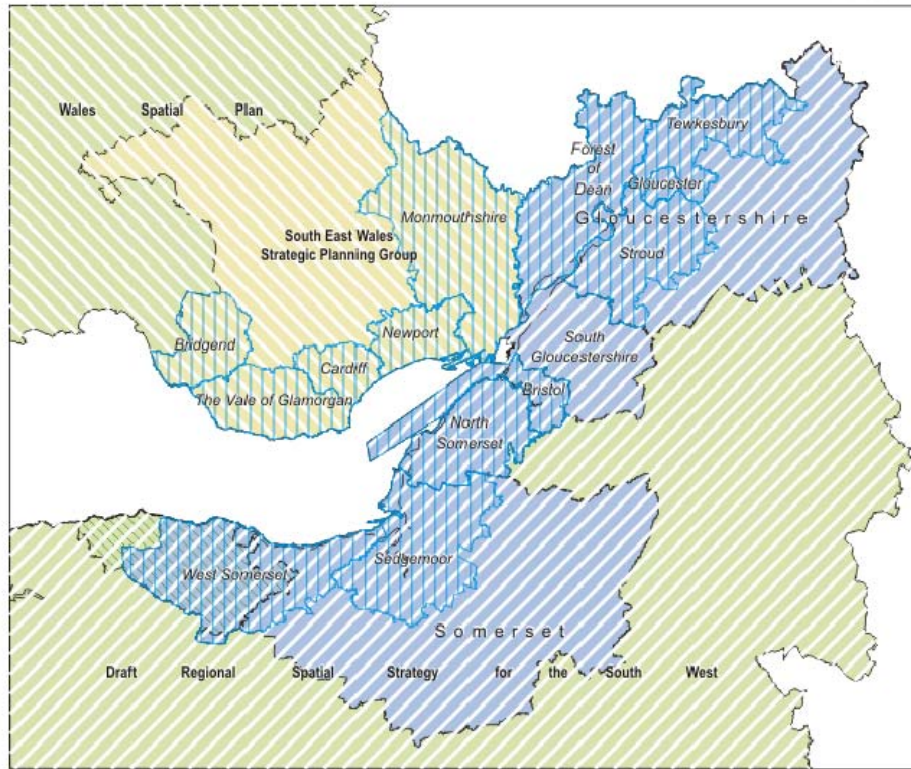
Phase I Policy Stocktake

IMCORE Severn Estuary Planning Review: Reviewed Planning Documents

-  Welsh Unitary Authorities
-  English Districts
-  English Counties
-  Exmoor National Park
-  South East Wales Strategic Planning Group
-  Wales Spatial Plan
-  Draft Regional Spatial Strategy for the South West



30
Kilometers



Welsh Planning Bodies / Groups	English Planning Bodies
Bridgend County Borough Council	Forest of Dean District Council
Vale of Glamorgan Council	Stroud District Council
Cardiff City Council	Tewkesbury Borough Council
Newport City Council	Gloucester City Council
Monmouthshire County Council	Gloucestershire County Council
South East Wales Strategic Planning Group	Bristol City Council
Welsh Assembly Government	North Somerset District Council
	Sedgemoor District Council
	West Somerset District Council
	Somerset County Council
REVIEWED PLANNING BODIES=20	South Gloucestershire Council
	Exmoor National Park
	South West Regional Development Agency
REVIEWED PLANS =31	



Stocktake Methodology

- 'Reading' Plans
 - e.g. for sustainable development
(Bruff & Wood ,1995; Hales, 2000; Counsell,1999...)
 - e.g. for coastal policies
(Taussik, 1996)

- Stocktake
 - 3 policy themes examined
 - 3 criteria used for policy analysis:
 - Policy occurrence
 - Critique of policy content and
 - Geographical coverage
 - Issues
 - Not exhaustive
 - Old & new style plans

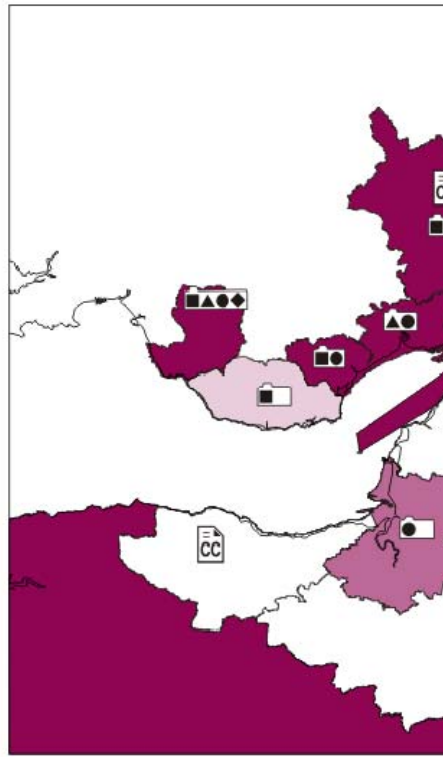
Policy Themes	Sub Categories
Climate Change	Mitigation considerations (other than CO2) Adaptation considerations Carbon management Supplementary Planning Guidance/ Documents Other policies
Flood and Coastal Erosion Risk Management	Development in flood risk areas Development exacerbating flooding Development and coastal erosion Ref. to Shoreline Management Plans Supplementary Planning Guidance/ Documents Other policies
Estuary Management	Ref. to Severn Estuary Partnership Ref. to Severn Estuary Strategy &/or other estuary wide initiatives Supplementary Planning Guidance/ Documents Other policies

Data & Fi

IMCORE Severn Estuary Plannin

- No CC policies or measures CC
- Mitigation only
- Adaptation only
- Mitigation and Adaptation

- Emerging draft climate change policies are:
- Energy
 - Travel and transport
 - Sustainable design and construction
 - SUDS



terns around the
ary?

Severn Estuary Planning Review:

Phase One Report

Wendy Dodds,

School of Earth & Ocean Sciences, Cardiff University

January 2010

DRAFT (v4)

ing Review Map 7

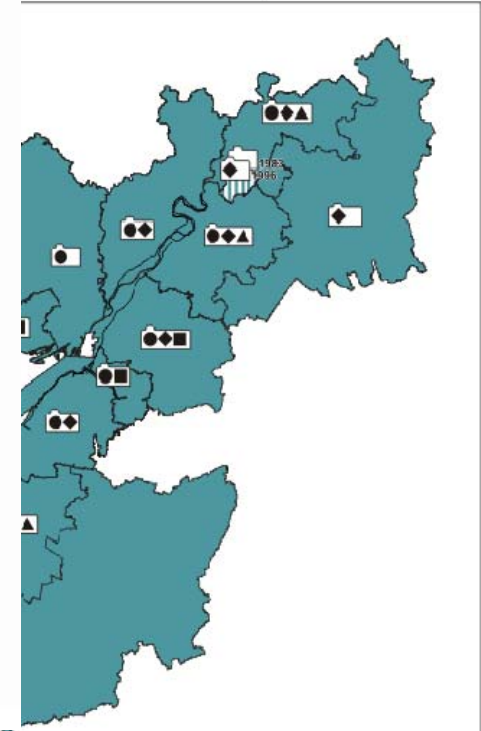
1 risk policy
2 risk policy

Planning policy measures

ements



30
Kilometers

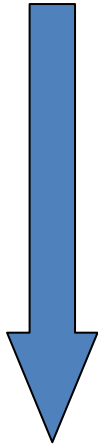


Emerging Policy Trends

Going Up

- 
- Strong emergence of explicit **climate change** policies within emerging plans
 - focus remains on mitigation
 - High numbers of **flood risk** policies in both adopted and emerging plans

Going Down

- 
- ‘Dropping off’ of **coastal zone** –related policies within emerging plans
 - Few references to **Shoreline Management Plans** in existing plans -none in emerging plans
 - Few references to **Severn Estuary Strategy** in existing plans & none in emerging plans

Questions raised by these trends...

- Unexpected policy trends
 - e.g. why have coastal-related policies dropped off?
- Do we need a change in existing planning guidance?
 - Update / Refresh TAN14 Coastal Planning?
 - How to encourage an adaptive approach to climate change adaptation?
- How to gauge the influence of current guidance & other drivers on...
 - ... policy development?
 - ... development of adaptation measures?

Phase I Key Messages

- Congested policy space around the estuary
- Key issues for planners:
 - Balancing the need for development around the estuary with protection of the environment, as well as protecting communities from coastal hazards
- Need to raise profile of:
 - Coastal planning issues (inc. the value of the coast)
 - Climate change adaptation
- Need to encourage:
 - a ‘Sense of Severn Estuary’
 - Severn Estuary Planning Community?



Phase II Research Focus

- *Policy Integration, Science-Policy Integration*
 - What are drivers for action and change within policy formulation? (local, regional & national)
 - What are the key issues and concerns for adapting to climate change at the coast for planning bodies? (interviews with LPAs to be undertaken to examine this)
 - How is climate change science influencing policy formulation? (sources, types, characteristics...)

Phase II Activities

- Interviews with planners (pan-estuary) (*Spring 2010*)
- Case study research (*Summer –Autumn 2010*)
- Planners Workshop (*June 2010*)
- Severn Estuary Climate Change Research Advisory Group (SECCRAG) (*various meetings*)
- Future Scenarios development (*Autumn 2010*)

Research attention needed on:

- Policy Integration across the estuary
- Climate Change Agenda
 - Promotion of adaptation measures
 - Resourcing and capacity by LPAs
- Coastal / Marine Agenda
 - The marriage of terrestrial and marine spatial planning systems
 - How the planning system can keep abreast & engaged with rapidly evolving Floods and Water agendas