

Demographic Change in the UK

Andy Bates
11 February 2010

Outline

- Overview of ONSCD population statistics
- Key uses of population statistics, customers
- Challenges
- Population Estimates
 - births, deaths and migration
- Population Projections
 - 2008-based National Population Projections
 - 2006-based Subnational Population Projections

ONS Centre for Demography Outputs

- Population Estimates
- National & Local Authority
 - Quarterly (GOR level)
 - Small area (eg Wards)
 - Ethnic group
 - Private household
 - Marital Status (de facto and de jure)
 - Very elderly (including centenarians)

- Population Projections
- National & subnational
 - Marital Status

ONS Centre for Demography Outputs

Migration statistics

- internal & international
- short-term international migrants

Fertility analysis

Family & living arrangements

Mortality & ageing

Longitudinal Study analysis

Key uses of Population Statistics

- Local government resource allocation
- Planning by central and local government
eg education and health services
- Grossing up survey results
eg Labour Force Survey
- Research by academics
- Commercial usage
- Regeneration initiatives
- Denominators for indicators and rates

Challenges

Changes in society and our economy

- ageing population
- migration
- living patterns
- family formation

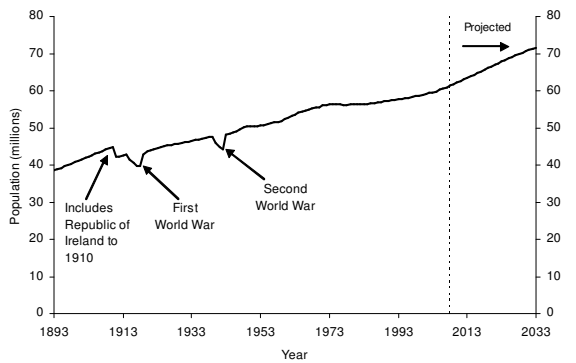
Demands for more and better statistics

- short-term international migrants
- small area population estimates

Migration Statistics Improvement Programme

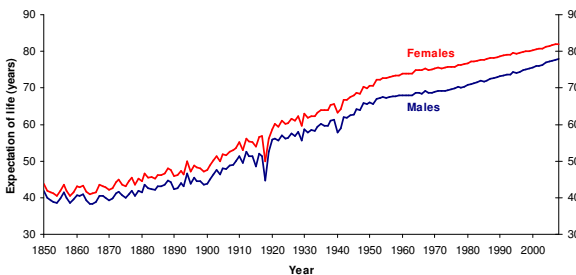
- To improve population and migration statistics in line with recommendations made in the 2006 Interdepartmental Task Force on Migration Statistics and subsequent Parliamentary reviews
- Cross government programme led by the National Statistician
- Aim is for improved population and migration statistics that are relevant for users needs, are as accurate as possible and are recognised as being the definitive authoritative source of migration statistics

UK Population, 1871 to 2033



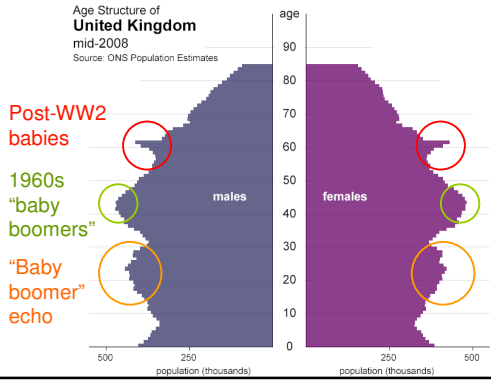
Historical Life Expectancies

Expectation of life at birth on a period basis, England & Wales, 1850-2008

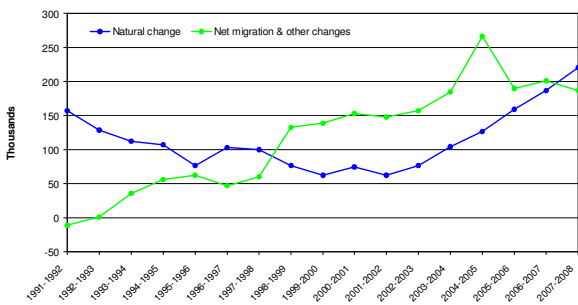


UK Population Pyramid

Age Structure of
United Kingdom
mid-2008
Source: ONS Population Estimates

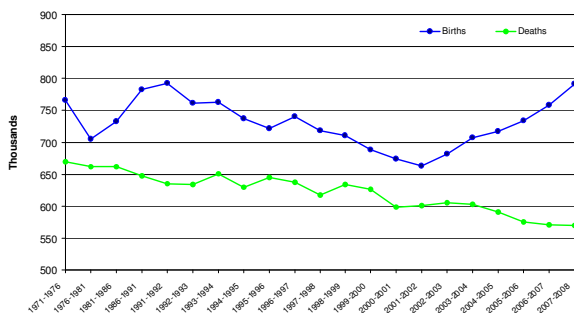


Components of Change UK, mid-1991 to mid-2008



UK Births and Deaths, mid-1971 to mid-2008

Figures for mid-1971 to mid-1991 are annual averages

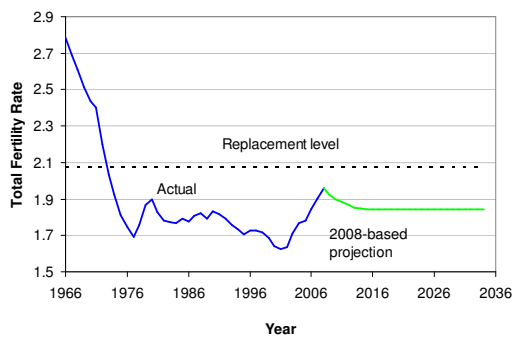


Increase in births

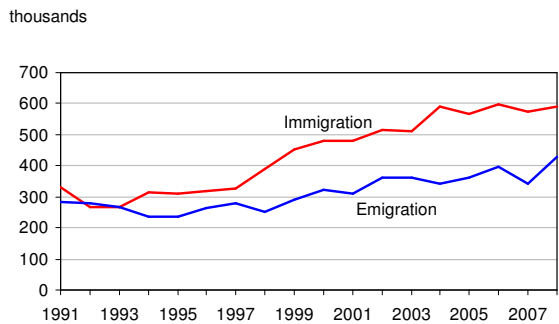
Two reasons for increase in UK births:

- Rising Total Fertility Rate (TFR):
 - 1.63 in 2001
 - 1.90 in 2007
 - 1.96 in 2008
 - Highest TFR in the UK since 1973
- Number of women of child-bearing age (15-44) has risen – partly due to immigration
 - however women 15-44 expected to decrease over next few years

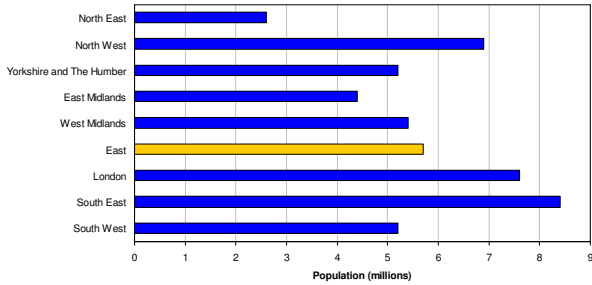
Total Period Fertility Rate, UK



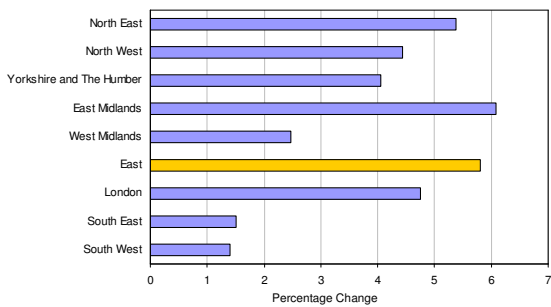
International Migration to/from UK 1991-2008



Mid-2008 Population by GOR



Population Change by GOR 2001-2008



National Population Projections

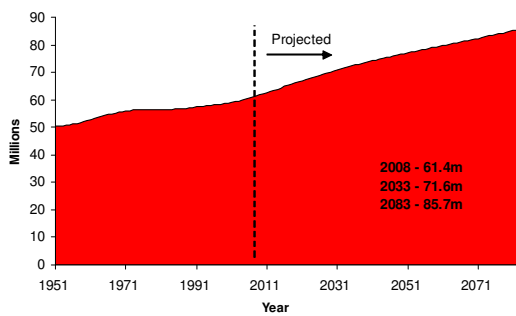
- Now done by ONS
 - previously produced by Government Actuary's Dept
- Projects forward for 75 years future population of UK and constituent countries
 - main focus on first 25 years
 - produced since 1954
- Base for marital status, labour force, subnational population & household projections

How are the projections produced?

- Base - mid-2008 population estimates
- Assumptions about the future – fertility, mortality and migration
- Projections, not forecasts. Assumptions take no account of new or future Government policies
- Variant projections as well as principal projection – differing assumptions

2008-based Projections

Total UK population (millions), 1951-2083

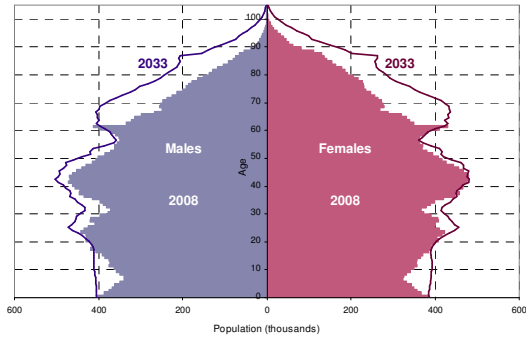


Assumptions

Long-term assumptions for UK:

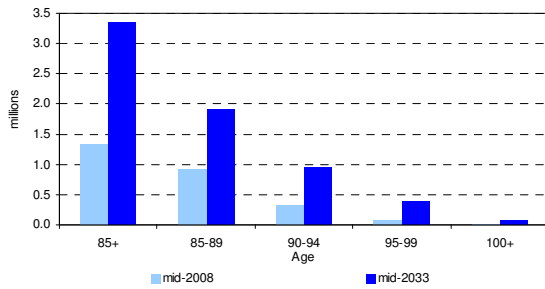
- Fertility:
 - unchanged from previous 2006-based projections
 - completed family size 1.84 children per woman
- Mortality:
 - period life expectancy at birth 83.1 years for men and 86.9 years for women in 2033
- Net migration:
 - annual net migration +180,000 per year
 - 10,000 lower than for 2006-based projections

UK population pyramid, 2008 and 2033



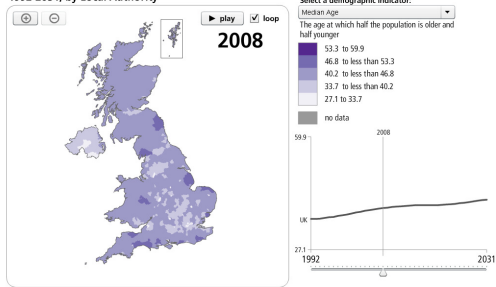
The ageing population

Estimated and projected population aged 85 and over by age group, UK, mid-2008 and mid-2033



Ageing

The ageing of the United Kingdom: <http://www.statistics.gov.uk/ageingintheuk/agemap.html>
Median Age 1992-2031, by Local Authority



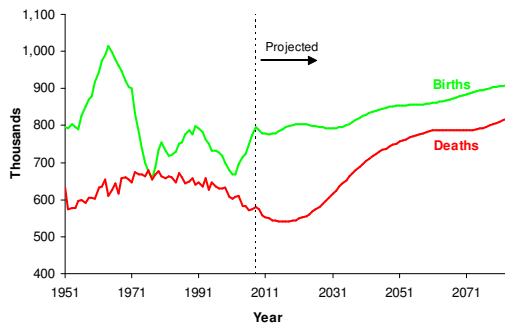
Source: Office for National Statistics, Welsh Assembly Government, General Register Office for Scotland and Northern Ireland Statistics and Research Agency. Graphic by ONS Data Visualisation Centre. © Crown copyright and database right 2008. All rights reserved. Publication Service Licence number 096/0727188.

Components of UK population change

- UK population projected to rise by 10 million by mid-2033, of which:
 - 55 per cent natural increase (more births than deaths)
 - 45 per cent net migration
- However, future numbers of births and deaths partly dependent on future migration
 - Two thirds of projected population change over the next 25 years either directly or indirectly due to future net migration

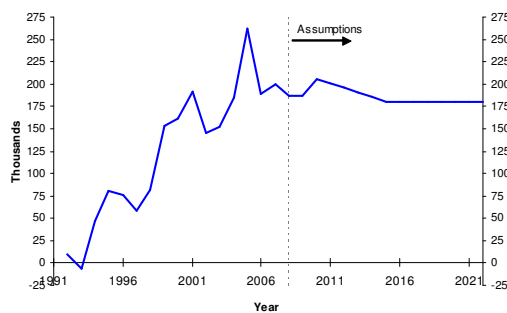
2008-based Projections – Births & Deaths

Actual and projected births and deaths, UK, 1951-2083



2008-based Projections – Net Migration

Total net migration, UK, 1991 to 2023

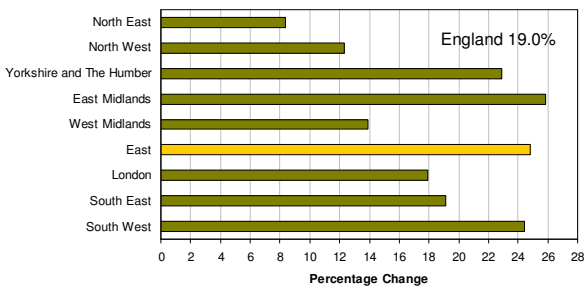


Subnational Population Projections

- Projections are trend-based
 - fertility, mortality and migration based on levels observed over a 5 year reference period
 - provide an indication of what the future population, by age and sex structure, might be if recent trends continue,
 - take no account of policy or development aims in areas
- 2006-based projections published June 2008
- 2008-based projections to be published May 2010
 - consistent with 2008-based NPPs

Population Projections by GOR 2006-2031

Percentage Change



Fast Growing East Region LAs, 2001-2021

