

Climate Change Governance in German Regions



TECHNISCHE
UNIVERSITÄT
DARMSTADT

Robert Riechel



RTPI-ARL Workshop
20th January 2010



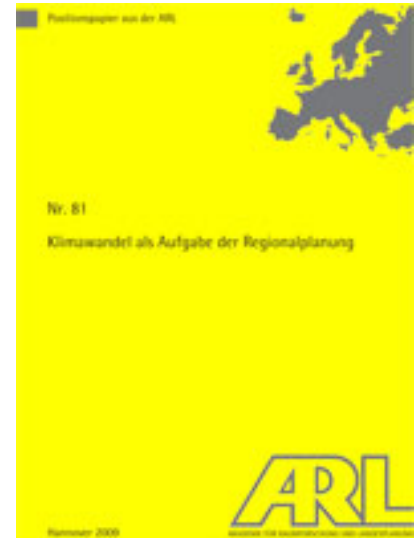
Climate Change Governance



TECHNISCHE
UNIVERSITÄT
DARMSTADT

„Climate Change Governance“ = new term

- Mitigation + Adaptation
- formal + informal instruments
- Broad range of stakeholders
- spatial dimension



➔ coordination and implementation processes gain importance

Adaptation to Climate Change

- New topic
- Integration in different sectoral policies

- ➔ climate adaptation policy in Germany

- ➔ Implementation
 - Legislation
 - Financial instruments
 - Communication: Stakeholders and networks



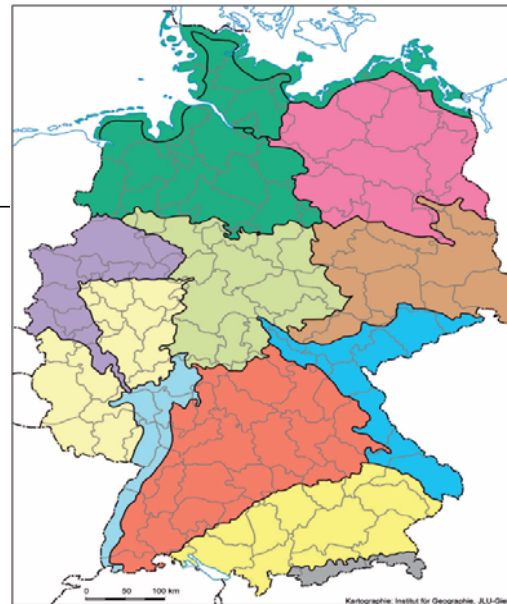
Climate impacts

- ➔ Slow changes
 - Rising temperatures
 - Fluctuating precipitation

- ➔ Extreme weather events
 - Droughts
 - Heat waves
 - Heavy precipitation and land slides
 - Floods
 - extreme storm events



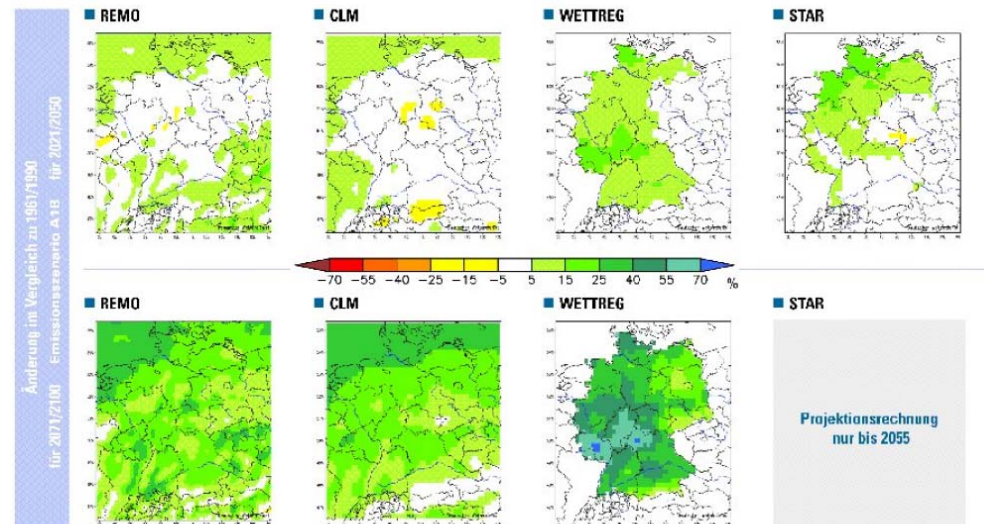
TECHNISCHE
UNIVERSITÄT
DARMSTADT



Deutscher Wetterdienst



Modellvergleich: mittlere Niederschlagsmenge – Winter



Quelle: REMO: MPI M LA, des Umweltwissenschaften, 2006; CLM: MPI MM&D LA, des RMRE, 2007; WETTREG: Meteo France LA, des Umweltwissenschaften, 2006; STAR: PIK Potsdam, 2007

Climate Adaptation: a new policy field



TECHNISCHE
UNIVERSITÄT
DARMSTADT

2005: decision to develop a national strategy for Adaptation to Climate Change (Federal Ministry for the Environment)

12/2008: German Strategy for Adaptation to Climate Change

04/2011: German Action Plan for Adaptation to Climate Change

06/2007: EU green paper

04/2009: EU white paper

Adaptation Strategies of the *Länder*

German Strategy for Adaptation to Climate Change



TECHNISCHE
UNIVERSITÄT
DARMSTADT

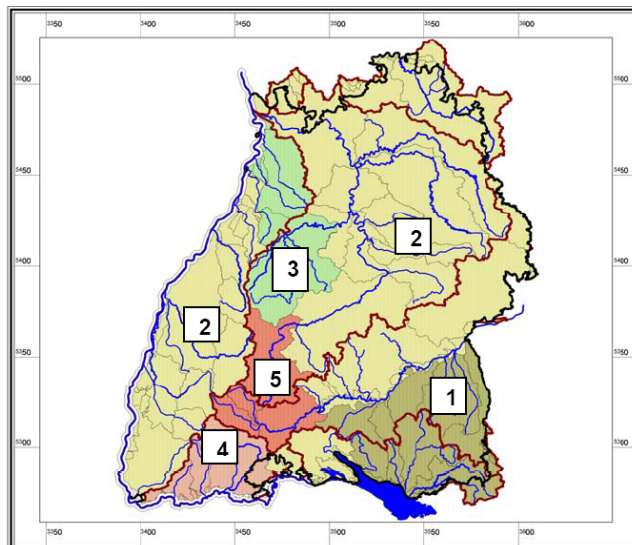
3. What are the consequences? – What can be done?	15
3.1. General climate impacts, trends, time horizons	15
3.2. Impacts on nature and society – identifying action options	16
3.2.1. Human health	16
3.2.2. Building sector	19
3.2.3. Water regime, water management, coastal and marine protection	20
3.2.4. Soil	24
3.2.5. Biological diversity	24
3.2.6. Agriculture	27
3.2.7. Forestry and forest management	29
3.2.8. Fishery	30
3.2.9. Energy industry (conversion, transport and supply)	32
3.2.10. Financial services industry	34
3.2.11. Transport, transport infrastructure.....	35
3.2.12. Trade and industry.....	37
3.2.13. Tourism industry	39
3.2.14. Cross-sectional topics: Spatial, regional and physical development planning and civil protection.....	40
3.3. Impacts on natural areas, examples of integrated approaches at regional level.....	43
3.4. Climate change mitigation and adaptation – using synergies, avoiding conflicts ...	46
3.5. State of research into adaptation to climate change	47

First summary

Strategic documents: no direct impact for implementation

Adaptation to Climate Change partially considered in sectoral policies

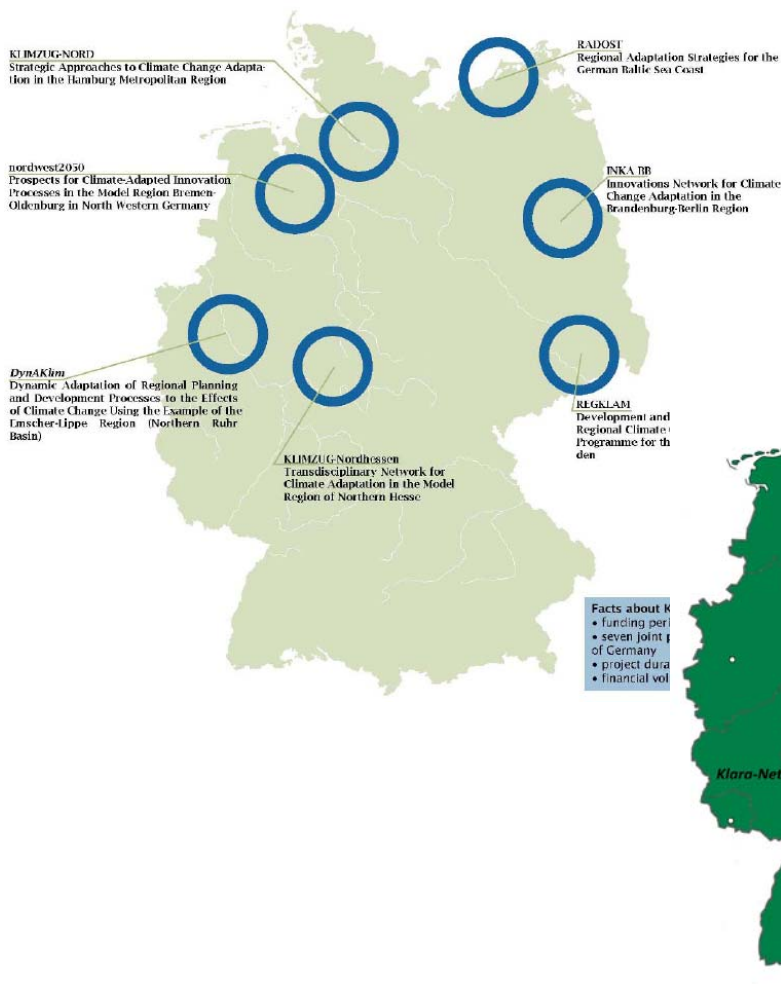
- Additional Climate Change factor for the calculation of river banks in Baden-Württemberg
- Additional funding programme for forest conversion in the context of Climate Change in Bavaria (15 Mio € from 2008 to 2011)



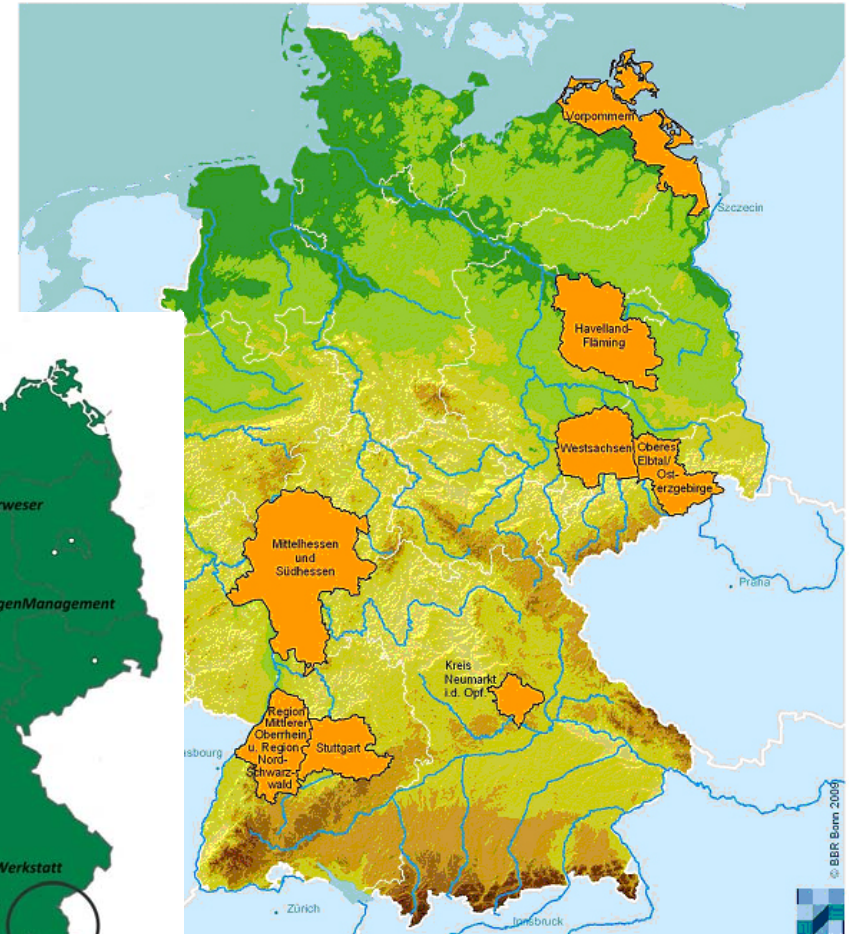
T [Jahre]	Klimaänderungsfaktoren $f_{T,K}$				
	1	2	3	4	5
2	1,25	1,50	1,75	1,50	1,75
5	1,24	1,45	1,65	1,45	1,67
10	1,23	1,40	1,55	1,43	1,60
20	1,21	1,33	1,42	1,40	1,50
50	1,18	1,23	1,25	1,31	1,35
100	1,15	1,15	1,15	1,25	1,25
200	1,12	1,08	1,07	1,18	1,15
500	1,06	1,03	1,00	1,08	1,05
1000	1,00	1,00	1,00	1,00	1,00

Bemerkung: für Jährlichkeiten $T > 1000$ a ist der Faktor gleich 1,0

Implementation: Regional experiments



Modellregionen "Raumentwicklungsstrategien zum Klimawandel"



Datenbasis: Laufende Raumbearbeitung des BBR
Geometrische Grundlage: BKS, Kreise, 31.12.2007

Regional stakeholder networks



1. Information

Different kinds of information:

- Climate data
- General trends for the region
- How am I concerned?
- general goals
- use of instruments
- measures ready to implement

2. Perception

Better understanding and individual reflection through direct communication

3. Implementation

Stakeholders take action on their own in their home organization:

- Investment in adaptation measures
- Diffusion of information
- Integration in plans and programmes

Regional stakeholder networks



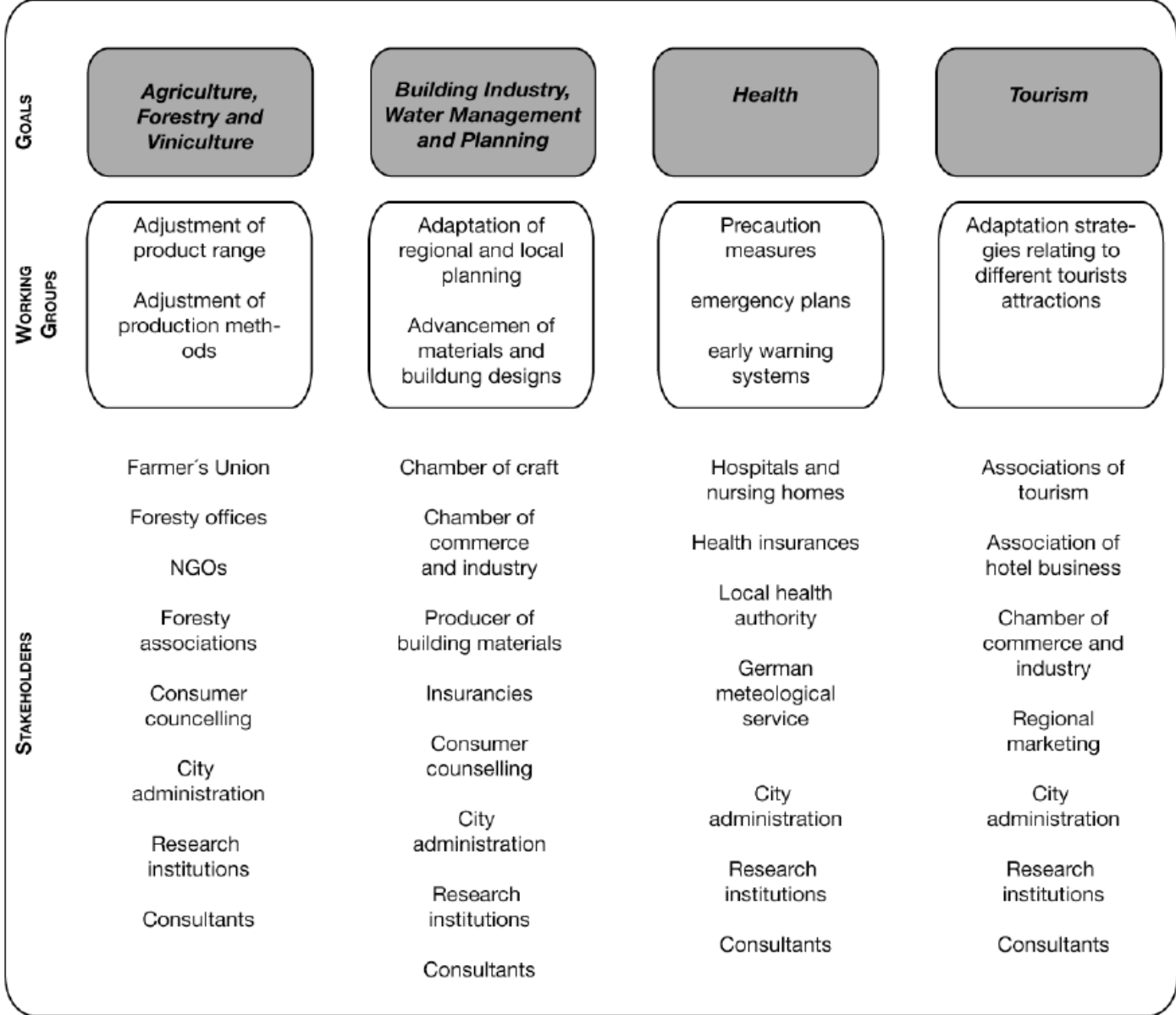
TECHNISCHE
UNIVERSITÄT
DARMSTADT

- Spatial approach on the regional level
- Connecting regional stakeholders
- Exchange of information
- Raising awareness
- Identifying regional vulnerability
- Finding measures to adapt



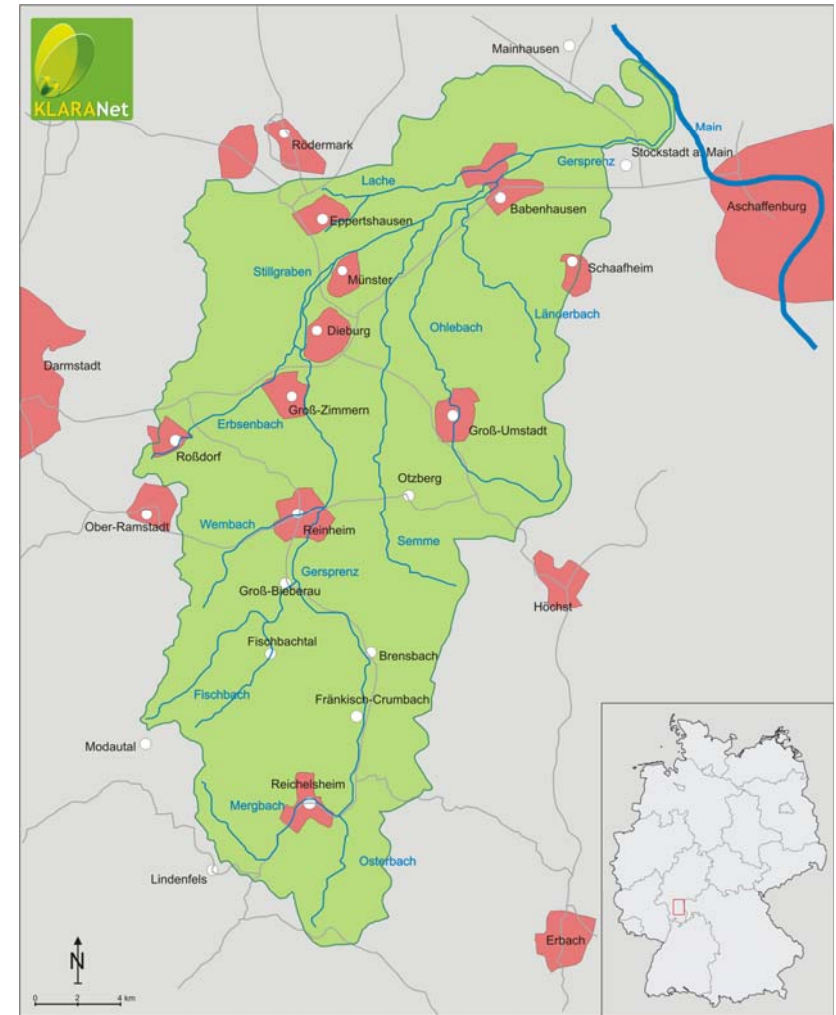
KLARA-Net working groups

- Broad discussion platform



KLARA-Net pilote area

- Risk map
- Regional adaptation concept with specific goals and measures



KLARA-Net regional fora

- Specific information events for the health sector, craftsmen, teachers
- Organized in collaboration with formal organizations



Preliminary summary



KLARA-Net - Steps towards policy integration

- Construction of a school
- Integration of climate adaptation in the regional plan
- Reallocation of agricultural land
- Guidelines for sustainable (climate adapted) building of Landkreis Darmstadt-Dieburg
- Village renewal programme
- Position paper on a funding programme for environmentally friendly agriculture
- Climate adaptation path for recreation in the LEADER programme
- 2. Craftsmen forum, organized by the chamber of crafts

Contact



TECHNISCHE
UNIVERSITÄT
DARMSTADT

www.klara-net.de

Robert Riechel

TU Darmstadt

Institut IWAR

Petersenstr. 13, 64287 Darmstadt

Tel: 06151/16-3148

E-Mail: r.riechel@iwar.tu-darmstadt.de



Thank you very much!