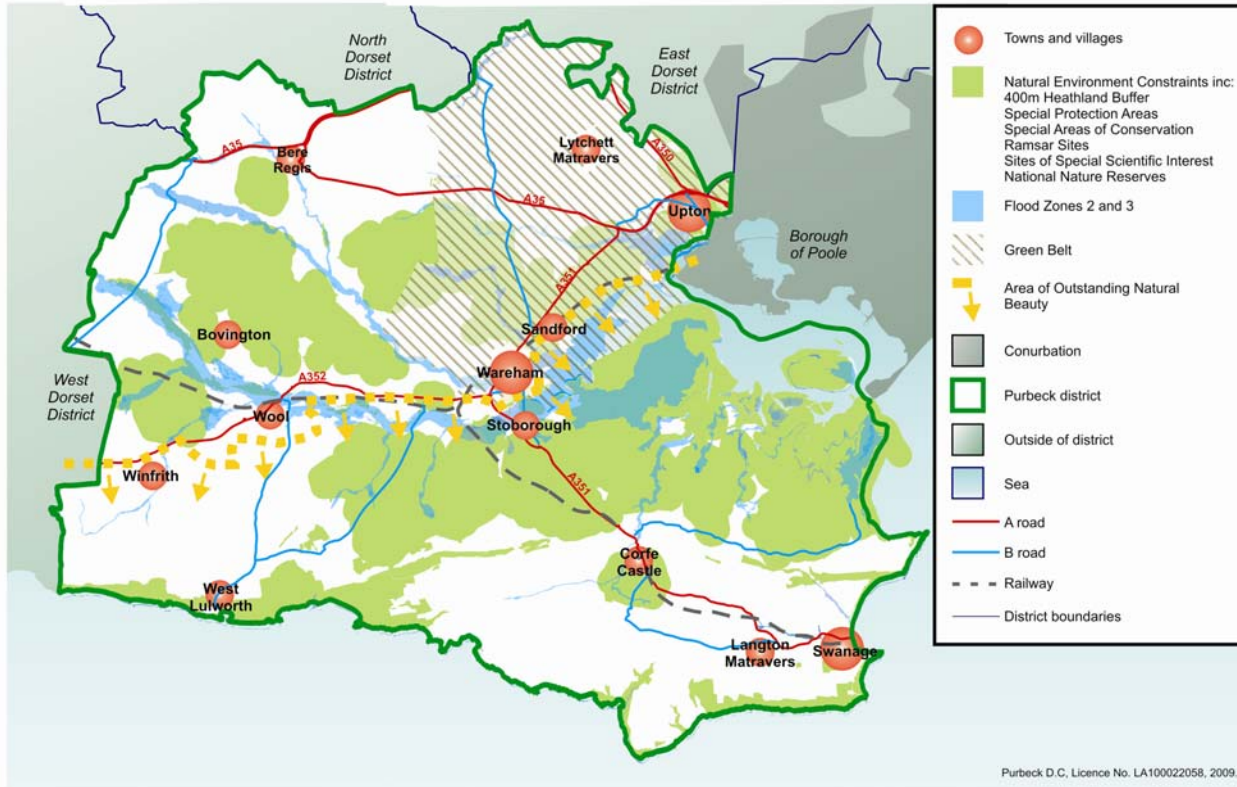


Planning in Purbeck



Councillor Peter Wharf

Chairman of the Planning Board - Purbeck District Council



The Task

- Overcoming inertia
- “Fair” Inspection
- Bungled Initial Attempt at Changes
- Building Confidence
- Implementing change
- Next steps



Key Tools

- “Policy Development Panel”
- Build good communications with key stakeholders
- Have a clear idea of “what success looks like”



Policy Development Panel

- Set up by the Council's Policy Group
- Contains representatives of outside bodies
 - Dorset Association of Town and Parish Councils
 - Local Architect
- Task and finish
- Nothing rule out/nothing ruled in
- Reports back through PG recommendations to Council



Areas to Cover

- Member training – role of Planning Board members
- Operation of the Planning Board
- Move to “risk based” enforcement
- Delegations to Officers



Building Confidence

- Workshops and seminars
- Regular highlight reports
- Regular report back – *“what you told us”*:
“what we’ve done”
- Concentration on the difficult areas
- Taking action – inclusivity



What we did

- Organised external training for members - ***“hard to be a prophet in your own country”***
- Reduced the size of Planning Board from 15 to 11
- Introduced a “risk based” enforcement policy
- Obtained acceptance for a new delegation scheme closely based on planning consideration –yet to be approved



Reduced the size of Planning Board

- Leaner more committed Board
- Easier to train
- Less of a strain on the Council to service
- “Whole Council”
- Significantly improve quality of decision making



Member Training

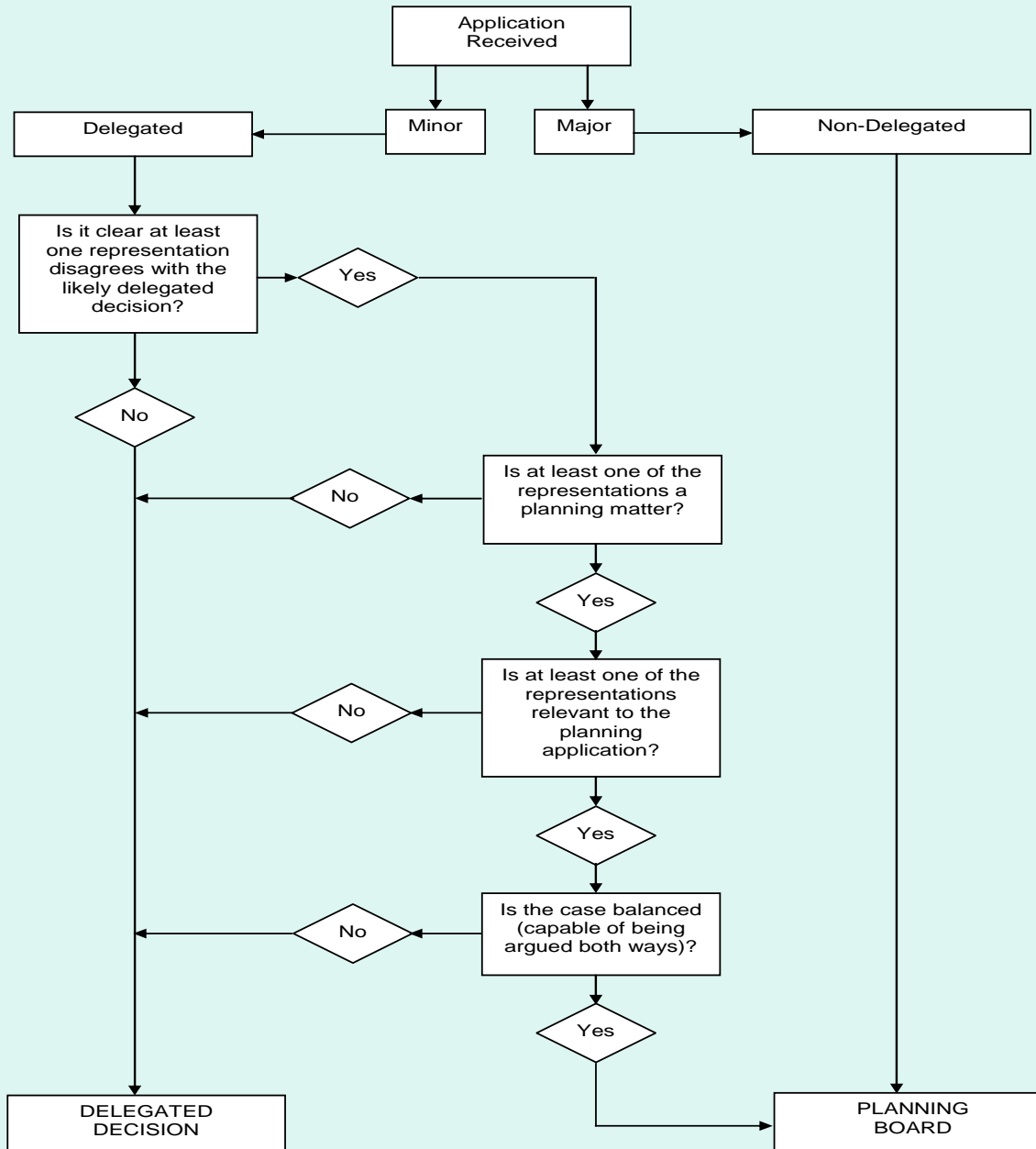
- Well received
- Not seen as a one-off
- Part of a move to ensure all members who sit in the Planning Board are trained
- Training organised for new members
- Parish Councillors to be trained

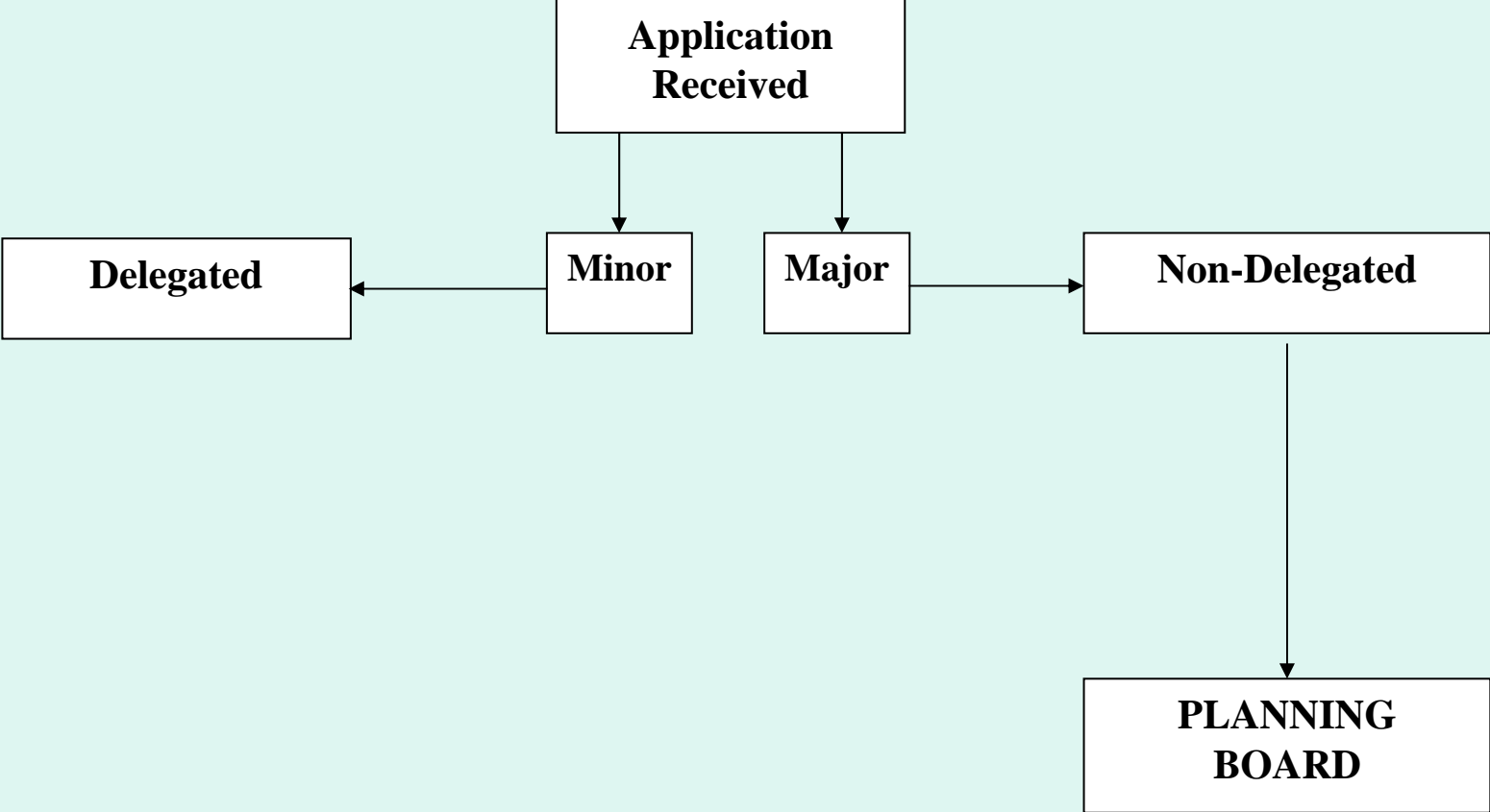


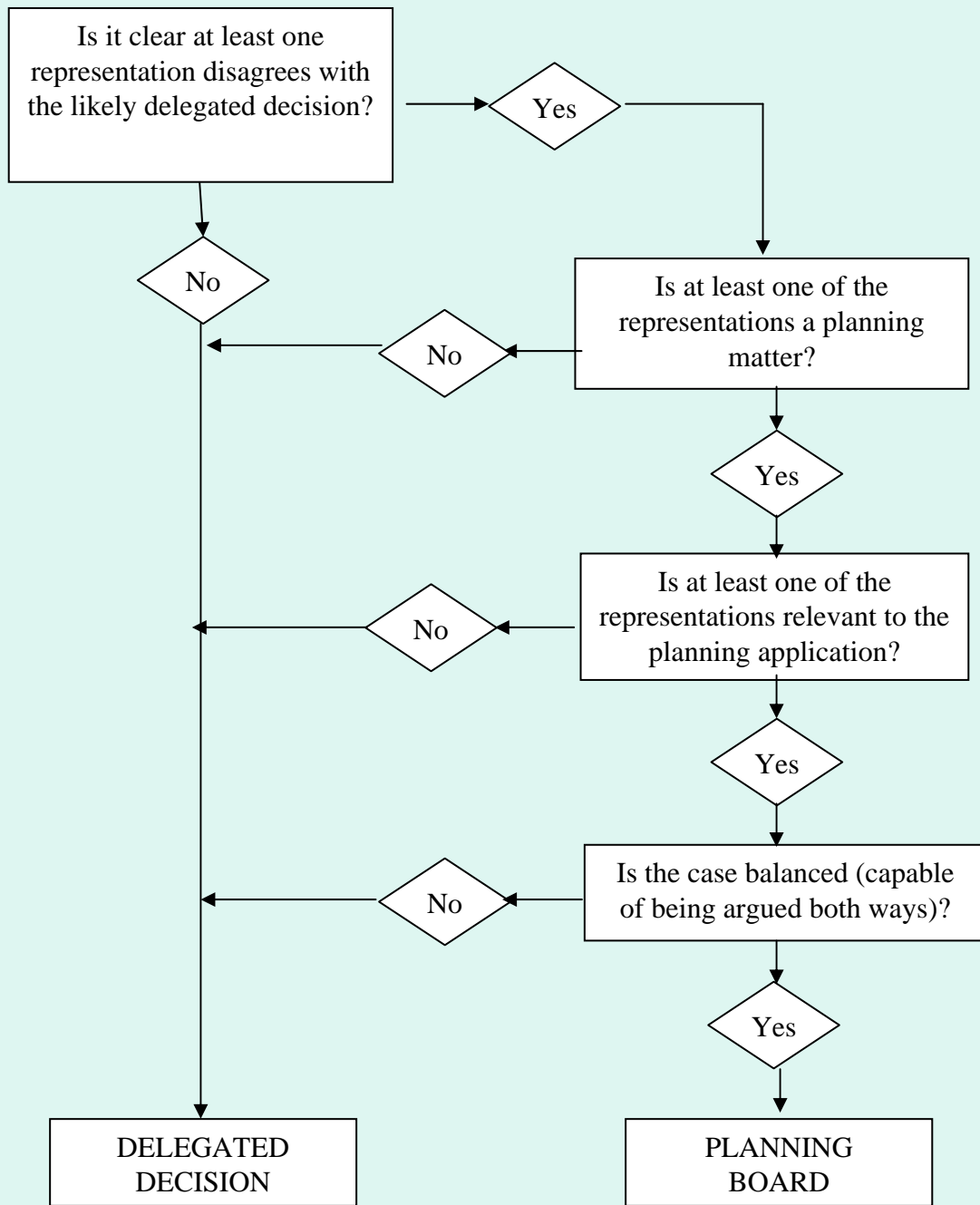
Risk Based Enforcement

- Policy classifying enforcement incidents by the risk they have of causing harm to: “the quality of life”; “health and safety” or the “environment”
- Not about who shouts loudest
- Also included service standards within the policy
- Members concerned about people “*getting away with it*”

PROPOSED DELEGATION ARRANGEMENTS – FLOWCHART









Issues

- How do you ensure that the views of the local member are taken into account?
- How do you avoid making parochial decisions?
- What do the electorate want from their local councillor?
- Member involvement in pre-planning application discussions



Purbeck District Council

Thriving communities in balance
with the natural environment

Thank you

Any Questions?