



Planning – in a challenged economy

- Delay
- Bureaucracy/Complexity
- Shortage of resources and skills
- Developer pressure
- Community resistance
- Stakeholder recalcitrance
- Climate Change and global pressures



Planning – delivering solutions

Delay

Issue

- Statutory consultees

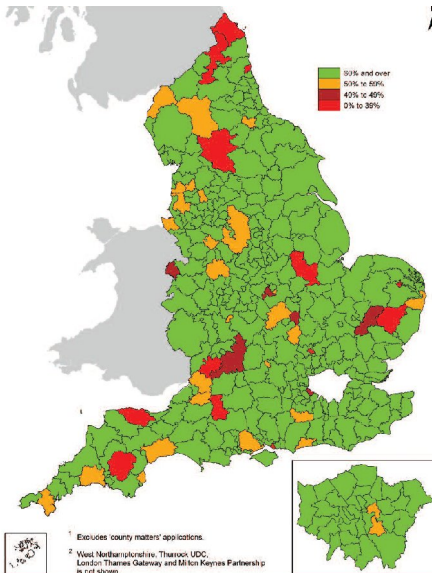
Solution

- Stakeholder consultation performance

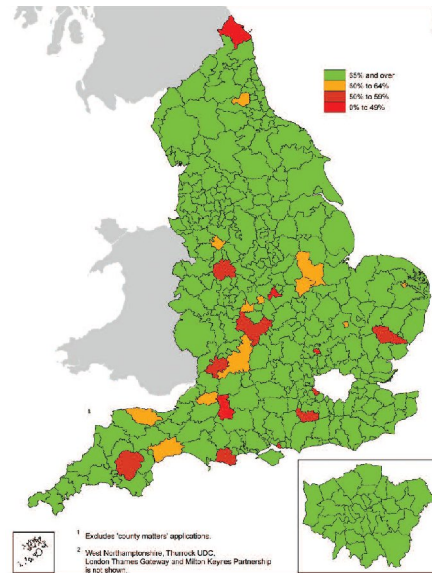
Public Rights of Way Officer
 Ramblers Association
 Police: Architect Liaison Officer
 Dept. Environment, Food and Rural Affairs.
 Highways Agency
 Local Highway Authority
 Network Rail
 Gas Authority
 Electricity Authority
 Environment Agency
 Local Water Company
 Natural England
 Sport England
 Regional Tourism Board
 Theatre Trust
 English Heritage
 Garden Historic Society
 Ancient Monuments Society
 Council British Archaeology
 Georgian Group
 Society for Protection of Ancient Buildings

Percentage of applications decided by authorities with 8 weeks, 2007-08

Major applications



Minor applications



Bureaucracy/complexity

Issue

- 1,715 laws/regulations since 2007

Solution

- Planners support principle, but need rationalisation

The Planning etc.
(Scotland) Act 2006
(Development Planning)
(Saving Transitional and
Consequential Provisions)
Amendment Order 2009
The Town and Country
Planning (Amount of Fixed
Penalty) (Scotland)
Regulations 2009
The Planning etc.
(Scotland) Act 2006
(Development Planning)
(Saving Provisions) Order
2008
The Town and Country
Planning (General
Permitted Development)
(Avian Influenza) (Scotland)
Amendment Order 2008

Shortage of resources and skills

Issues

- Job loss
- Skills for market recovery

Solutions

- Combine LA management
- Consultants
- RTPI CPD programme



Developer pressure

Issue

- Viability and bank deals

Solution

- LDAs to “hold their nerve”



Community resistance

Issue

- Consultation or continuing conversation?

Solutions

- Shared issues equal civic responsibility
- Understanding to reach difficult decisions
- Converted NIMBYs!



Stakeholder recalcitrance

Issue

- Rationale to co-operate and align

Solution

- Integrate strategy at local level



Climate change and global pressures

Issue

- Share knowledge

Solution

- Global market awareness



Planning – to live with climate change



Planning to live with climate change¹
Our seven commitments



Seven commitments



Promote behavioural change



Celebrate best practice



Adapt existing places



Compile a compendium of best practice



Work towards responsive legislation and policies



Develop climate change education and skills



Improve current practice



How?



Promote behavioural change



- Statements of community involvement to provide climate change awareness/solutions
- LDF Neighbourhood Travel Plans
- RTPI working with investors and developers to establish a commercial imperative and customer preference for climate change sensitive development



How?



Adapt existing places



- Renewable technology frameworks for existing communities - critical mass of population for biomass, wind and ground source solutions
- Planning rules changed to incentivise adaptation
- Community engagement to build commitments to action through LDFs



How?



Work towards responsive policies and legislation



- RTPI Taskforce to provide clear framework to capture climate change law and regulations on stakeholder practice – align through spatial planning
- Monitor climate change proofing of planning policy and legislation



How?



Improve current practice



- Design Code for climate change sensitive Sustainable Communities
- Eco footprint audits of new and existing communities as Core Strategy evidence
- “Standard” Climate Change policy statements, planning conditions and Section 106 clauses



How?



Celebrate best practice



- **Planning Awards**

- *Eco Barn, Orchard Acre Farm, Co Fermanagh* (Northern Ireland)
- *InterMETREX Plus: Greenhouse Gas Inventory Project* (Scotland)
- *Thames Estuary 2100 Online Consultation* (England)
- *Wales next*

- **Climate Change Policy and Practice Research programme**



How?



Compile a compendium



- **Best Practice website with quality check**

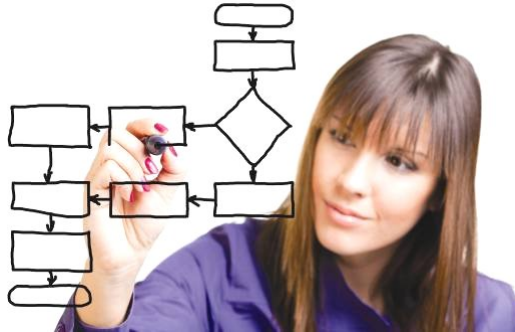
- Use 'practice climate change gateway', practice notes, conferences and partnerships to spread access to good practice



How?



Develop climate change education and skills



- RTPI Climate Change Awareness road shows through Regions and Nations

- Kitemarked courses in schools and Planning schools e.g. RTPI are working with UCL to accredit a specialist course in climate change planning

- Monitor effectiveness through monitoring APC applications and membership applications

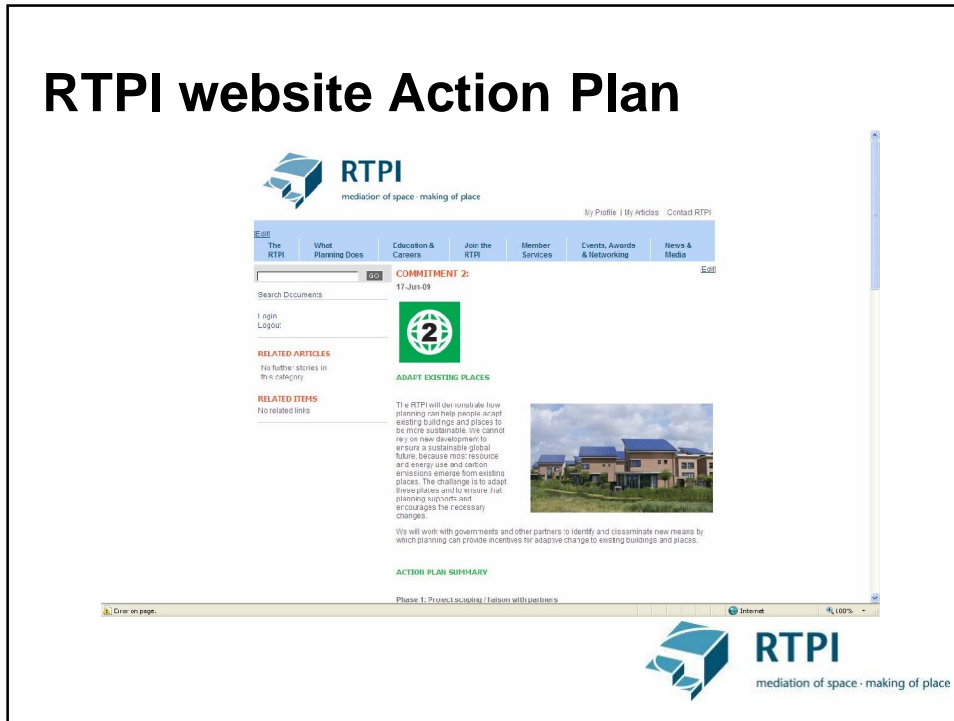


What next?

- Enthusiastic RTPI member engagement already in place
- RTPI climate change policy and practice research scoping study
- RTPI climate change kitemark skills modules under development
- Planning Aid in place as medium for climate change action support
- Action Plan for each commitment and how members can engage on website NOW!



RTPI website Action Plan



The RTPI and government

- **Spatial Planning provides the framework for economic recovery**
- **Planners are committed to focus on economic development**
- **Planning will continue to sustain high standards**
- **Planning demonstrates joined-up government**
- **Planners are Today's and Tomorrow's Leaders**
- **Planners are the "stewards" of the future – professionals and politicians with the community**





Planning to live with climate change⁷
Our seven commitments



RTPI
mediation of space · making of place

www.rtpi.org.uk/item/2624/23/5/3



RTPI
mediation of space · making of place