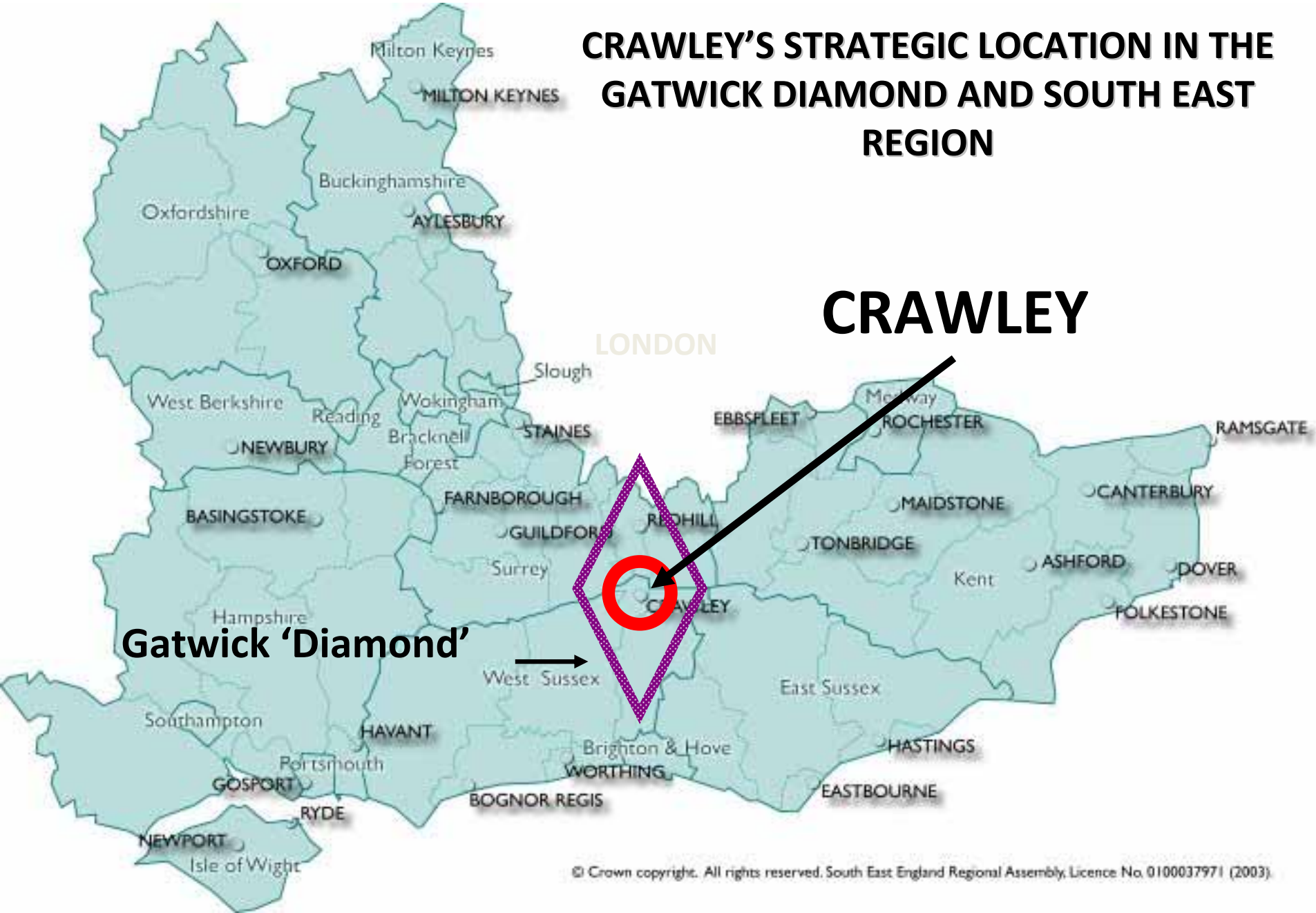
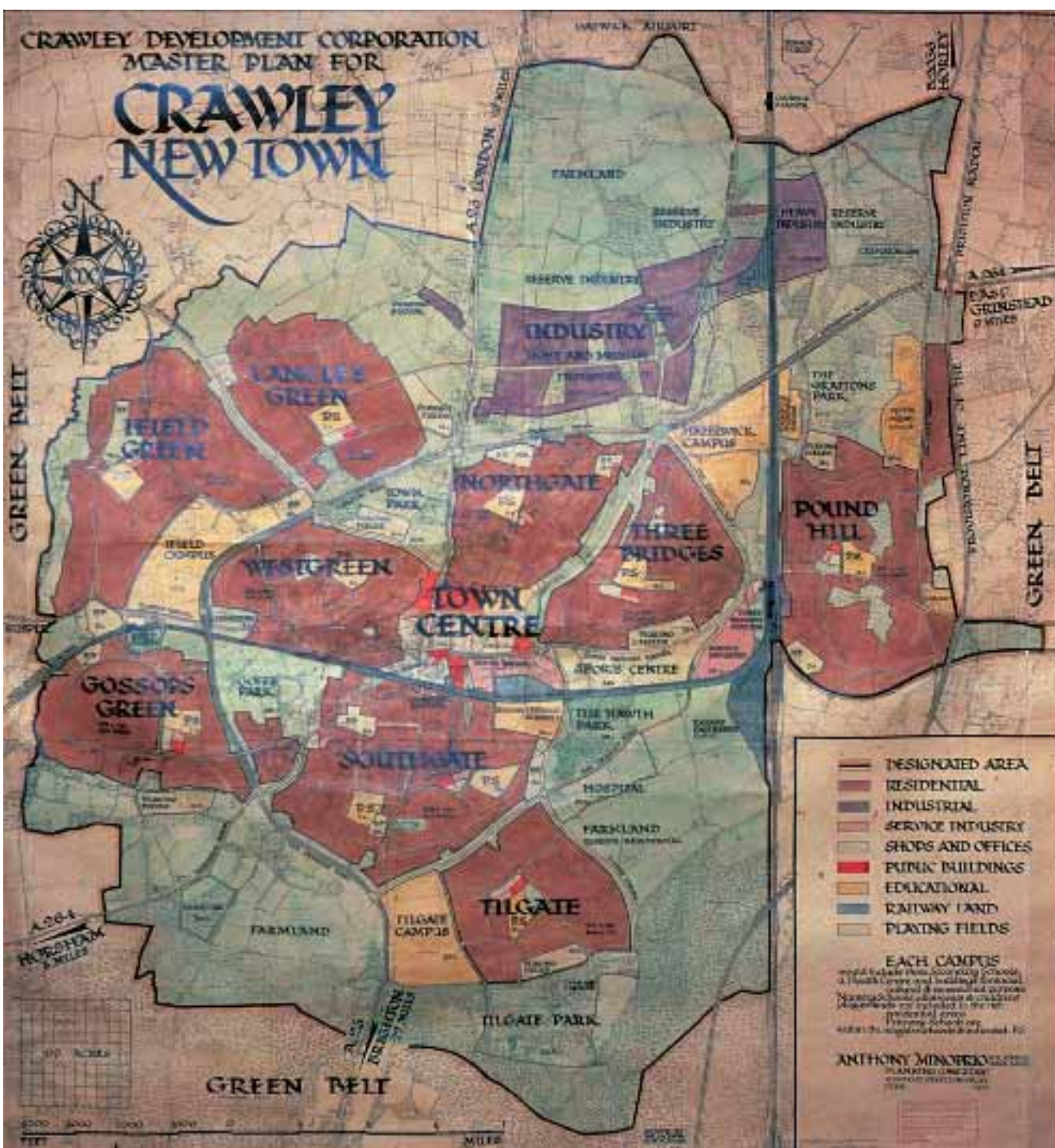


Planning in the credit crunch-
delivering quality and planning at
any cost?

CRAWLEY'S STRATEGIC LOCATION IN THE GATWICK DIAMOND AND SOUTH EAST REGION

CRAWLEY





1947: new town designation

1950: Manor Royal opened by the (now) Queen

1958: Queens Square & Gatwick Airport officially opened by the Queen

1970s: New neighbourhoods

1980s: Maidenbower

1990s: County Mall

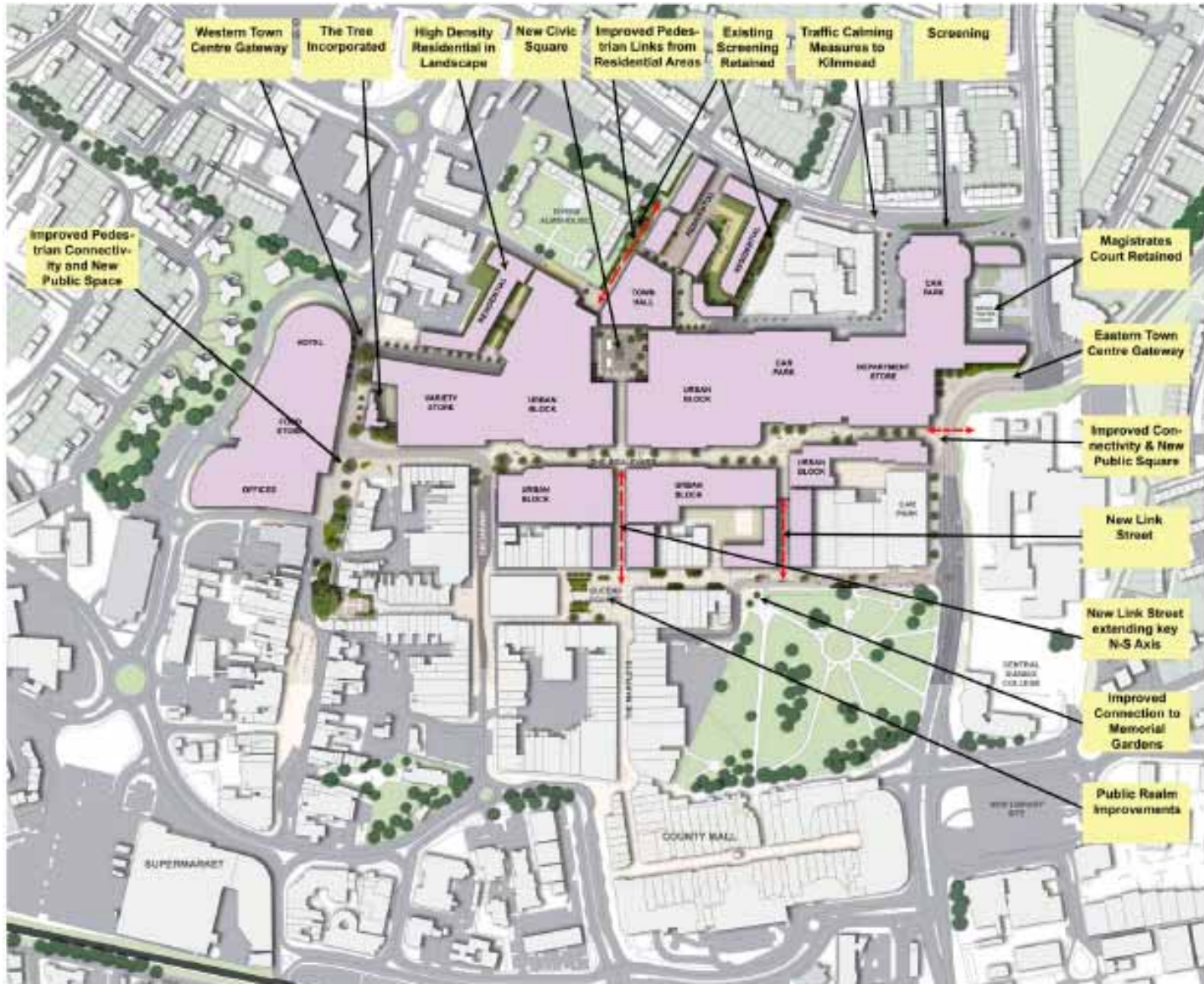


Gatwick!!!

Gatwick aerodrome c.1930

Gatwick Racecourse c.1890





Western Town Centre Gateway

The Tree Incorporated

High Density Residential in Landscape

New Civic Square

Improved Pedestrian Links from Residential Areas

Existing Screening Retained

Traffic Calming Measures to Kinmead

Screening

Improved Pedestrian Connectivity and New Public Space

Magistrates Court Retained

Eastern Town Centre Gateway

Improved Connectivity & New Public Square

New Link Street

New Link Street extending key N-S Axis

Improved Connection to Memorial Gardens

Public Realm Improvements

SUPERMARKET

COUNTY HALL

CENTRAL GARDENS COLLEGE

SAFETY STORE

URBAN BLOCK

CAR PARK

DEPARTMENT STORE

URBAN BLOCK

URBAN BLOCK

URBAN BLOCK

CAR PARK

OFFICES

URBAN BLOCK

URBAN BLOCK

URBAN BLOCK

URBAN BLOCK

URBAN BLOCK

CAR PARK

RECEPTION

DOWN HALL

RECEPTION

CAR PARK

HOTEL

TOUR STORE

OFFICES

URBAN BLOCK

URBAN BLOCK

URBAN BLOCK

URBAN BLOCK

URBAN BLOCK

CAR PARK

CENTRAL GARDENS COLLEGE

NEW LINKWAY ETC

Challenges

- Reduction in schemes - so what??

What role does the Local Authority
play?

- How can we create opportunities out of recession?



Brace Oakley & Partners

NIGHTINGALE HOUSE

Charles Drake & Co. Ltd.

Brace Oakley & Partners

Brace Oakley & Partners

Brace Oakley & Partners

PERVIA

CITROEN

RECYCLING





CRP2006/0616/06

RDJW ARCHITECTS

RDJW
ARCHITECTS

RDJW ARCHITECTS LIMITED
SUITE 100, 111 BAYVIEW AVENUE
SCARBOROUGH, ONTARIO M1S 5A6
TEL: (416) 291-1111 FAX: (416) 291-1112
WWW.RDJWARCHITECTS.COM

BRIGHTON HOUSE
BRIGHTON ROAD, TORONTO

PROPOSED CLEANING

DATE: 2/16/06

