



Office for
National Statistics

Migration Statistics Improvement Work

Rich Pereira

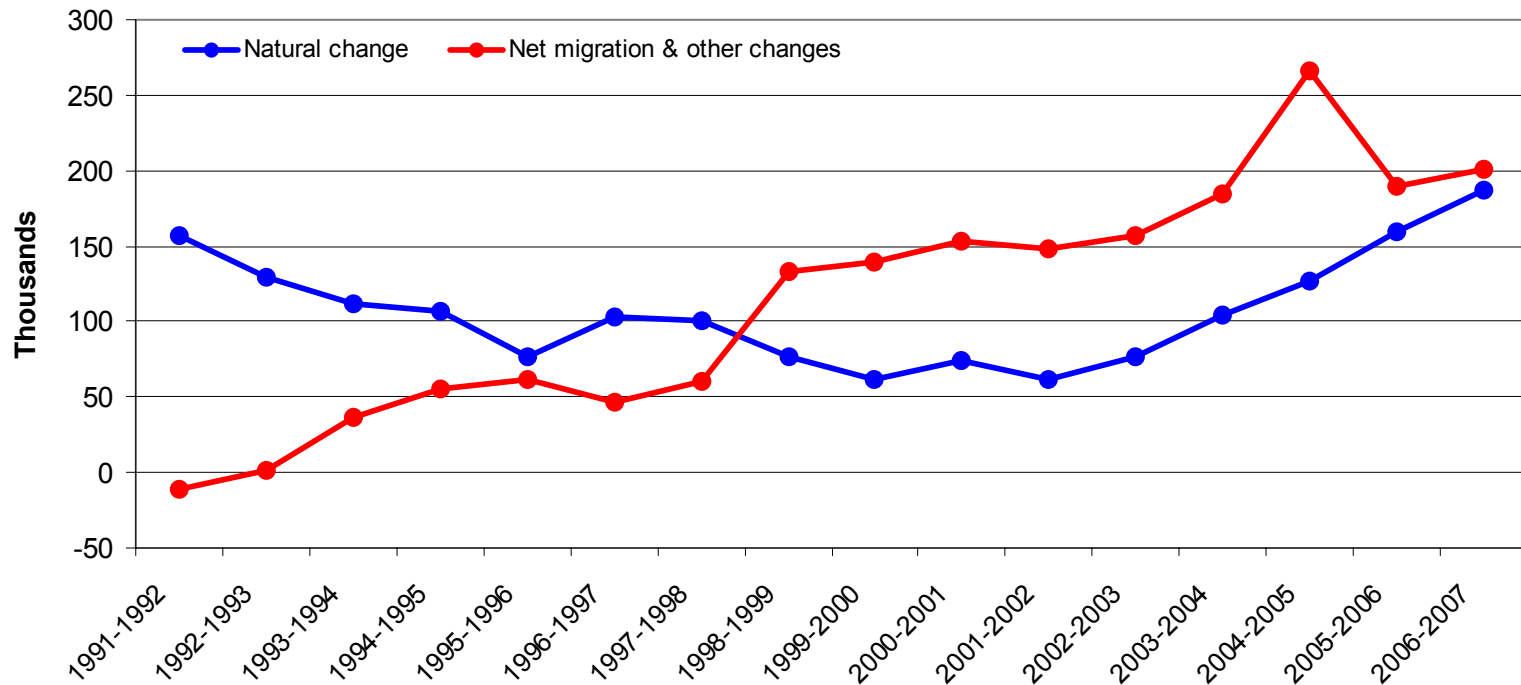
ONS Centre for Demography

Context

- Migration is a key part of population change
- It is difficult to measure
- There is no direct source or register
- Estimated using surveys and other sources

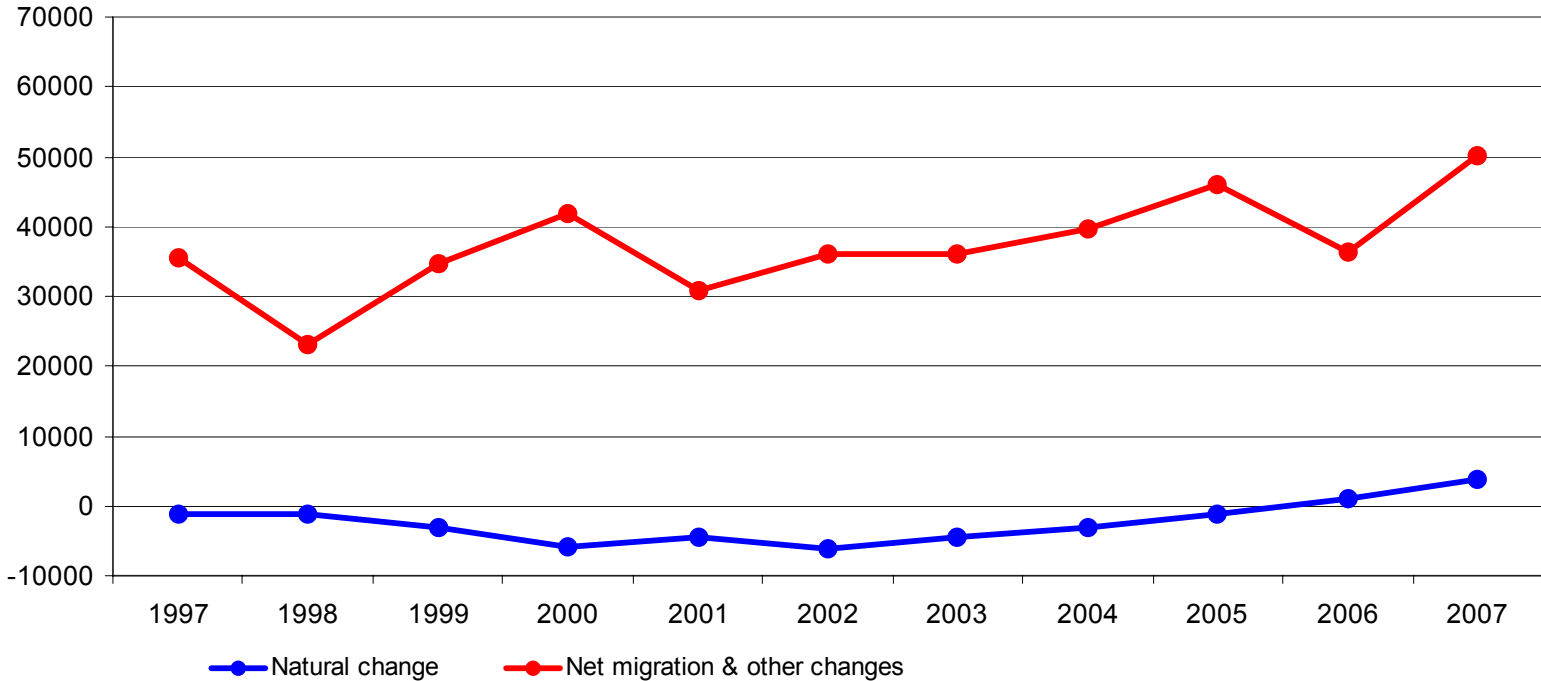
Components of change

UK Components of Change, mid-1991 to mid-2007

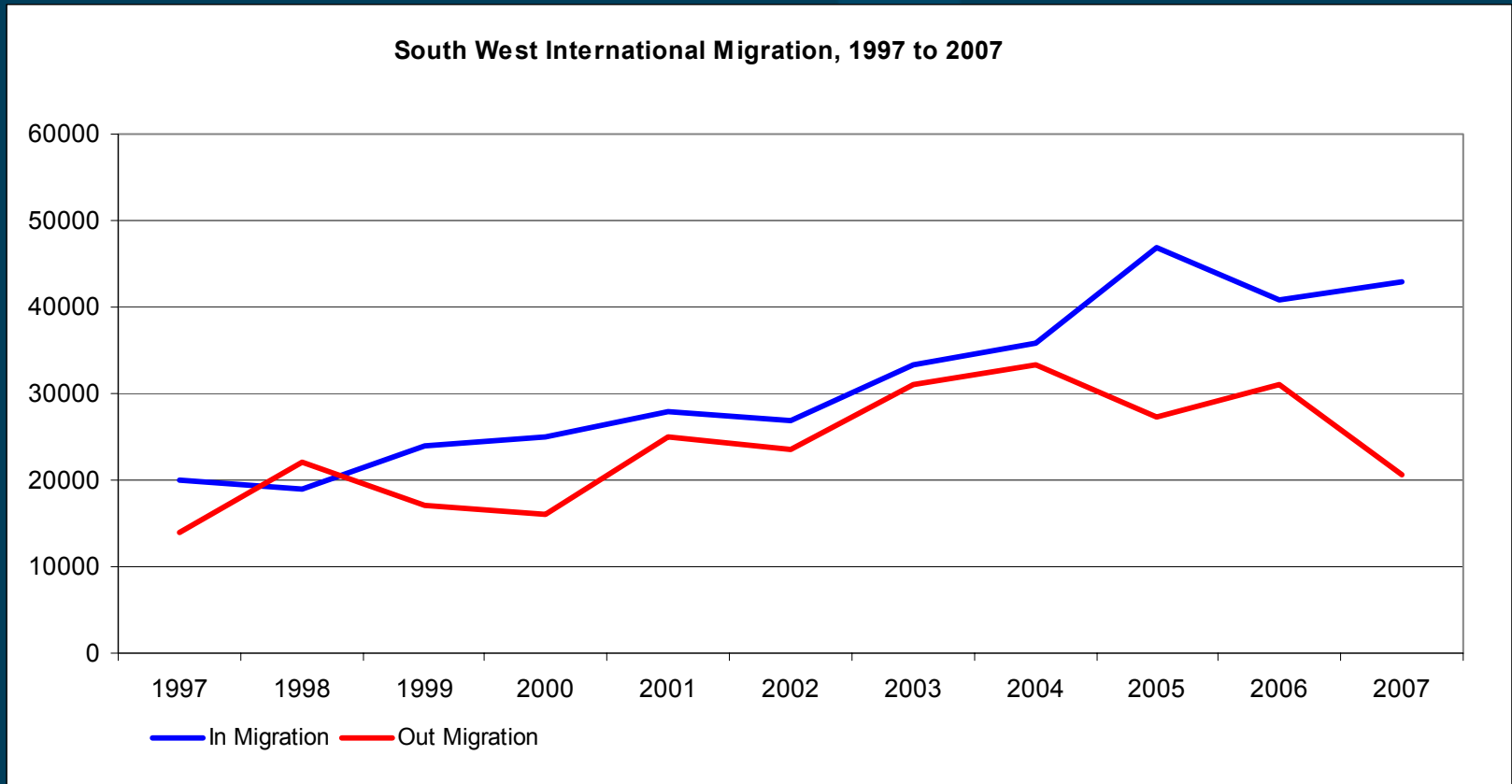


South West

Natural Change and Net Migration for the South West, 1997 - 2007



Gross Migration Flows



Importance of Population Estimates

- Local authority resource allocation
- Planning and monitoring service provision
e.g. education and health services
- Grossing up survey results
e.g. Labour Force Survey
- Research by academics
- Denominators in the derivation of rates
e.g. GDP, unemployment rates, mortality & fertility rates

Improvement Work

- Better information on migrants as they enter or leave the country
- Better information on migrants within the country
- Improved sources
- More timely indicators
- More coherence in reporting

Modelling and Matching Approaches

- International migration:
 - survey based estimate
 - sample of data
 - modelling approaches appropriate
- Internal migration:
 - administrative data basis (Health)
 - “population” data
 - record matching approach to improvement

Current research examples

- Distribution of international migration using administrative data
- Student adjustments using HESA data
- Short term migration estimates
- Quality measures around population estimates
- Indicators and early migration outputs

Specific deliverables

2008

- Redesigned port survey
- E-Borders initiated
- Legal gateways for data sharing
- Development of new surveys
- Coherent migration reporting
- Research – students, distributions, short term migration

Specific deliverables

2009 and beyond

- Implementation for 2008 MYEs
- Data from e-Borders
- New/redesigned surveys running
- Use of DWP, DCSF and other administrative data
- Record linkage
- Census – 2011
- Beyond 2011

Keeping up to date

- Quarterly updates and other information at www.statistics.gov.uk/imps
- Joint ONS/LGA workshops
- Implementation seminars
- Consultation
- Email: imps@ons.gsi.gov.uk