

# LONDON CALLING

The Journal of the London Region of the RTPI

July 2006



## London Planning Awards 2006

closing date: Monday 17th July

The Royal Town Planning Institute, London First and the Mayor of London are pleased to announce the fourth year of the London Planning Awards. These awards aim to recognise outstanding planning achievements by individuals and organisations and aim to celebrate the best of planning in the capital.



LONDON  
PLANNING  
AWARDS  
2006

The five categories are:

1. Best public sector planner or planning organisation
2. Best private sector planner or planning organisation
3. Best built project contributing to London's future
4. Best conceptual project contributing to London's future
5. Best community or partnership initiative

And the Mayor will make an award to the best overall entry for Planning Excellence.

The 2006 awards will be presented on Tuesday 28 November at a ceremony to be held at City Hall and hosted by the Mayor of London, Ken Livingston.

Entry forms are available by contacting the awards office on email: [awards@rtpi.org.uk](mailto:awards@rtpi.org.uk) or phone: 020 7929 9473.



### Contents

View from the chair	2
CIC Construction Skills	2
PlanningMatters	3
Spot the Building	3
Young Planners Slug it Out	4

The 2005 Mayor's Award for Planning Excellence was awarded to the Olympic and Paralympic Games and legacy projects undertaken by the Joint Planning Authority Team for the Olympic and Paralympic Games and London Development Agency

# A view from the chair

## RTPI London Regional Chair, Vicky Wilshaw

Hello and welcome to another issue of London Calling. The purpose of London Calling is to keep you up to date with events and activities in the RTPI London Region. Thank you to those of you who came to our recent events; the London Young Planners' Quiz and our joint seminar with Planning Aid for London.

Regional Activities Committee members Nancy Astley and Paul Miner organised a very popular Young Planner's Quiz in May. Over 90 young planners from London attended.

The seminar on understanding development finance also attracted record numbers of members. This joint seminar with Planning Aid for London took place at the West End offices of CB Richard Ellis. Robert Evans from Argent and Andrew Youens from University of Westminster helped unravel the mysteries surrounding how developers assess a scheme's viability. As so many new schemes include a complex mix of use, it's more important than ever that planners in London are realistic about what will make a successful development. For example, there's little value in having a residential scheme with shops or leisure facilities on the ground floor that you can't let!

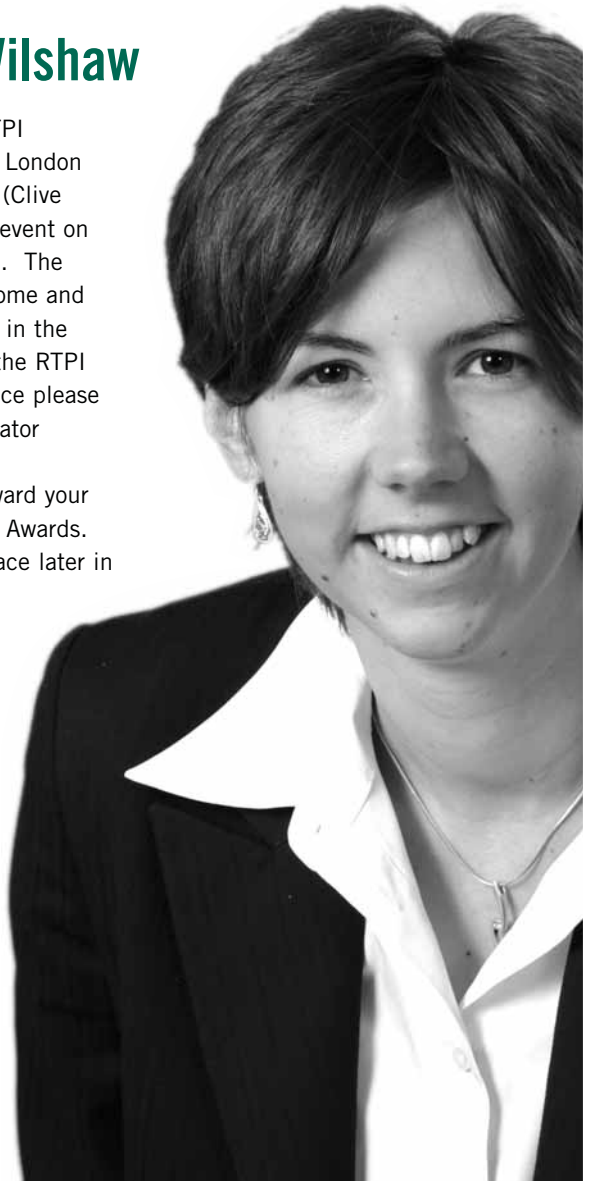
Looking forward, the RTPI London

Region is preparing for the RTPI President's annual visit to the London Region. This year's president (Clive Harridge) will be chairing our event on infrastructure later this month. The President would also like to come and meet London Region planners in the workplace. If you would like the RTPI President to visit your workplace please contact our regional administrator ([London@rtpi.org.uk](mailto:London@rtpi.org.uk)).

Plus don't forget to put forward your entry for the London Planning Awards. This annual event will take place later in the year (details inside).

Finally, we are about to launch a regular email update containing details of events run by the RTPI London Region and other organisations. We hope you find this service of interest and look forward to receiving your feedback. To sign up for this free email, please contact our regional administrator.

*Vicky Wilshaw is RTPI  
London Region Chair  
and a Senior Planner at  
CB Richard Ellis*



## CIC-ConstructionSkills Employer Panels

CIC (Construction Industry Council), of which RTPI is a member, is a committed partner in ConstructionSkills, the Sector Skills Council for construction. Through this partnership, ConstructionSkills is working to improve the quality of training to meet employers' needs and to attract and retain construction professionals in the industry. With feedback from employers, CIC aims to ensure new and existing employees are equipped with the right skills for the job.

Employer engagement is fundamental to enable us to address the real recruitment concerns among professionals. To help us to achieve

our goal, the CIC has established a new Professional Employers Panel in the London region to focus on concerns raised in surveys of UK architectural practices. A further Panel is currently under development in the South East region.

These regional Employer Panels give employers the opportunity to express their concerns about recruitment and retention of qualified staff and graduates among construction professionals and guide skills initiatives proposed by CIC-ConstructionSkills. Current issues include a lack of practical and people skills in graduates and a general under-

investment by firms in training.

For further information please call Janette Welton on 020 7399 7404 or refer to [www.constructionskills.net](http://www.constructionskills.net).

### Work Placement Sought

Student of MA Planning Course (London South Bank University) with overseas qualification and experience in Architecture and Planning, is looking for work placement with a professional planning consultancy or Local Authority. Available 1 or 2 days a week for this summer. Please, contact me by e-mail [anara\\_sult@yahoo.co.uk](mailto:anara_sult@yahoo.co.uk).

# PlanningMatters . . . what is it?

PlanningMatters is a versatile on-line knowledge resource that has been developed to enhance the capability, efficiency and responsiveness of the planning community in meeting the needs of clients and colleagues.

It has been designed specifically to:

- Support planners in the performance of their day-to-day activities
- Facilitate continuous professional and personal development

## What is it?

PlanningMatters contains some 120 specialist planning modules and around 400 personal development and management topics – so there is something for everyone.

**Knowledge Builders** present a detailed overview of the subject.

**Action Lists** offer guidance in the application of subject knowledge.

Each planning module includes:

- references to papers, journals and books
- on-line links to relevant web-based material

These facilitate further study and research for those requiring more expert-level coverage of the subject.

Interactive assessments are included to reinforce learning and to provide feedback on comprehension.

PlanningMatters is available 24/7 for just-in-time use and can be easily accessed from any PC linked to the internet. Content can be reviewed on-line or downloaded instantly for printing – assessments are completed on-line. PlanningMatters also provides a CPD Log to enable personal recording of learning activity. The CPD Log adds valuable input to appraisal reviews and to personal development planning.

## What is it for?

PlanningMatters will benefit anyone working in or with the planning profession:

- Planners
- Licentiates
- Students
- Support-staff
- Elected members
- Anyone with an interest in planning

The Legal Commentary presents a topical column on how planning legislation is being interpreted by the courts and by local councils.

It is proving to be a very popular feature – its recent heads up on the information Commissioner's ruling regarding planning authority copying charges was most enlightening.

Written by a solicitor with over 25 years' experience in the planning arena it provides case study information to illustrate current planning law issues. The content is added to frequently and provides some useful pointers to how legal rulings might affect the day-to-day activities of those engaged in the planning profession.

## The benefits

The modules offer bite-sized chunks of information, with a typical study duration of 60 minutes. Low-cost learning can be planned easily around work commitments.

- Employees can prepare rapidly for new assignments with minimum disruption
- Research time is reduced by having concise material on hand
- Learning is faster, with fewer interruptions to experienced staff
- Individuals can efficiently expand the breadth and depth of their knowledge to satisfy organisational and personal goals

- Service standards will improve, with productivity increases and cost savings being valuable spin-offs

"PlanningMatters has proved to be an invaluable and cost-effective means of enabling our staff to undertake continuing professional development." Paul White, Director, Planning, Landscape & Heritage, Atkins

To find out more telephone RTPI HQ: 020 8568 1500 or E-mail: [info@planningmatters.co.uk](mailto:info@planningmatters.co.uk)

## Hampstead Garden Suburb CAAC

The Hampstead Garden Suburb CAAC has a vacancy for an RTPI nominated member. The CAAC considers and assesses planning applications within the Hampstead Garden Suburb conservation area. If you are interested please contact Peter Phillips, the Secretary of the Hampstead Garden Suburb CAAC in the first instance on 020 8455 6772.



## Spot the Building Competition!

The winner of the "Spot the Building Competition" in the last London Calling was Ed Jones of London Borough of Enfield. Ed correctly identified the building as the Peace Pagoda in Battersea Park. Ed wins a £10 voucher. Thanks to all those who entered.

Answers please by 31st August 2006 to [jon.barker@atkinsglobal.com](mailto:jon.barker@atkinsglobal.com)

# Young Planners Slug It Out!

Wednesday 26th April saw twenty-five teams consisting of London's young planners converge on the Slug and Lettuce in Aldgate to battle for the title of being London's No.1 young planners quiz team.

After a gruelling four rounds of planning related questions, (not made any easier by the fact the microphone system didn't arrive to the venue and therefore questions were shouted out by the RTPI Region Reps) the champions were declared.

A big "well done" to Colin Buchanan's Team (who received a winning prize from Judd Farris of theatre vouchers and champagne!)

Only two points behind in a closely fought contest, was the London Borough of Camden's team aka. The Dartmouth Park Butchers.

There was also a hotly disputed third place tie, between the LB Merton team (aka. The Plannerteers and the Axis of



From left to right: Roland Brass (capt.), Greg Lee, Caroline Geary, Jon Pickstone, Martin Wedderburn

Ignorance) and the RPS Group (aka. Carly's Coming) who decided amicably to share the third place prize of five bottles of wine.

The RTPI London Region would like to thank all the teams that participated for making the evening really special and we hope to see you all at the next event!!

For further information on events, or the Young Planners Network, then please contact: [nancya@planningaidforlondon.org.uk](mailto:nancya@planningaidforlondon.org.uk)

## Planning Summer School Canterbury, Kent 2006

This year Summer School visits the University of Kent at Canterbury for the first time.

Subjects for all three Schools will demonstrate the critical linkages between planning and practice, interaction between those who must work together in common planning purpose, and how best to connect with best practice and new thinking in the UK and abroad.

The programme will be delivered via plenary papers and discussion sessions, together with workshops and case studies led by experts highlighting new technical or innovative approaches.

**Make it a date now!**

Elected Members School, 1-5 September 2006

Planners' School 1, 5-9 September 2006

Planners' School 2, 9-13 September 2006

More details at <http://www.planningsummerschool.org/canterbury/>

This newsletter was printed on paper made with a minimum of 75% recycled pulp



Elemental Chlorine Free



NAPM approved  
recycled product



Fully recyclable and  
biodegradable



ISO 14001  
Produced at a mill that holds  
ISO 14001 certification

## London Region Contacts 2006

### Regional Management Board

#### Chair

Vicky Wilshaw, CB Richard Ellis

#### Senior Vice-Chair

Mary-Jane O'Neill, Drivers Jonas

#### Junior Vice-Chair

Vacant

#### Hon Secretary

Ian Bond, Halcrow

#### Hon Treasurer

Carol Ryall, Planning Aid for London

#### Representative on General Assembly and Representative on RIBA LUPG

Joanna Chambers, EDAA

#### Immediate Past Chair, Representative on CIC London Executive and Region Web Page Editor

Richard Lemon, Roger Tym & Partners

### Regional Activities Committee

#### Young Planners Representative

Nancy Astley, Planning Aid for London

#### Events Coordinator

Hannah Baker, Atis Real

#### Newsletter Editor

Jon Barker, Atkins

#### Black Planners Network Representative

Wilma Daniel, London Borough of Hackney

#### Consultations Secretary

Michael Fearn, Shire Consulting

#### Representatives on Planning Aid for London Management Committee

Miles Joyce, London Borough of Brent  
Meeta Kaur, SJ Berwin

#### University Planning Schools Liaison Officer

Paul Miner, Campaign to Protect Rural England

#### Representative on RTPI

#### English Planning Policy Forum

Brian Whiteley, London Borough of Waltham Forest

#### Other Regional Activities Committee members

Roger Chapman, Government Office for London

Giles Dolphin, Greater London Authority

Sophie Hey, EDAA

Matthew Sharpe, EDAA

#### Contact:

RTPI London Region

c/o Planning Aid for London, London E1 6PX

Telephone: 020 7426 0680 Fax: 020 7247 8005

Email: [londonbranch@rtpi.org.uk](mailto:londonbranch@rtpi.org.uk)