



RTPI

mediation of space • making of place
cyd drefnu gofod • creu cynefin

The Royal Town Planning Institute: Wales Branch
Y Sefydliad Cynllunio Trefol Brenhinol: Cangen Cymru

Planning Wales

newsletter of RTPI CYMRU

MARCH/MAWRTH 2007

Reviewing National Planning Policy Processes in Wales

ECOTEC have been appointed by the Welsh Assembly Government to carry out a review and evaluation of the processes used to develop national planning policy in Wales.

The study will look at how national planning policy, including minerals policy, is currently produced in Wales and also look further afield in the UK and Europe to learn lessons for Wales. The study will not consider the content of planning policy – but instead focus on how it is developed.

The aim of the study is to advise on the appropriate scope and level of detail of national planning policy and advice necessary to support

the Local Development Plan system (although the study will not look at how policy is developed at the local level) and efficient decision-making and consider how any future reviews of planning policy and advice should be undertaken, including how to engage with stakeholders. The study will also look at the way planning policy should be presented.

ECOTEC are also pleased to be working closely with an esteemed panel of experts who will advise on good practice across Europe: Patsy Healey, Cliff Hague, Christabel Myers and Mark Tewdwr-Jones.

The study involves a number of meetings and workshops to ensure as many views as possible are captured. If you are interested in further information about the study or would be interested in attending a workshop, please contact Roisin Willmott either by telephone: 029 2036 7775 or by e-mail: roisin.willmott@ecotec.com

Disability, Equality & Access in Planning

Training event by Planning Aid Wales and Disability Wales

**Disability
Wales**



**Anabledd
Cymru**

Would you like to know more about Access Statements in practice?

Are you supportive of disability rights, but never quite sure how to put them into practice in your daily work? Would you like an opportunity to learn first hand from the experiences of disabled people and other planners? Then you should join a one day seminar on Disability, Equality & Access in Planning on Thursday, 26 April 2007 in Llandudno, organised by Planning Aid Wales and Disability Wales.

This reciprocal training event will bring together planning experts and disability rights

experts, i.e. Planning Aid Wales volunteers and colleagues and local access group members. It will be a unique opportunity for planners to learn about disability rights and about how to best put them into practice in planning.

There will be guest speakers who will cover subjects such as Access Statements and accessibility in the LDP process. The most exciting bit of the day however will be the workshops where delegates can share expertise and work out ways of assuring access for all in planning, which includes both access to the process of decision making and access to the physical products of planning.

This event is free for Planning Aid Wales and Disability Wales volunteers. For other delegates there is a charge of £50, which includes lunch.

There will be similar event in South Wales in September.

For further information, or to register, please contact Marika Fusser on 01286 882834 or marikafusser@btconnect.com by 26 March 2007.

INSIDE:

Also, in this edition of the Newsletter:

- SWANSEA'S ON-LINE PHONE MAST REGISTER – A FIRST FOR WALES?
- PLANNING SUMMER SCHOOL IS COMING BACK TO SWANSEA!
- NEW STRUCTURE FOR RTPI CYMRU MOVES FORWARD

RTPI CYMRU
March 2007
Mawrth 2007

Planning Wales is the newsletter of RTPI Cymru.

If you would like to make a contribution to a future edition please contact the Editor:

Neil Harris

Tel: 029 2087 6222

Fax: 029 2087 4845

E-mail: harrisnr@cardiff.ac.uk

Please remember this newsletter is written for you about you, so please put pen to paper and contribute!

To receive regular updates and reminders of forthcoming events by e-mail send your e-mail address to wales@rtpi.org.uk

Registered Head Office Address:
Royal Town Planning Institute
41 Botolph Lane
LONDON EC3R 8DL

Registered charity no. 262865

THE OPINIONS EXPRESSED ARE CONTRIBUTORS OWN UNLESS OTHERWISE STATED. THE WALES BRANCH OF THE RTPI IS NOT RESPONSIBLE FOR STATEMENTS MADE OR VIEWS EXPRESSED IN THIS JOURNAL.

Editorial

Contributions are welcome from RTPI members and others on a wide range of topics and in a variety of different forms:

- Conference announcements
- Seminar programmes
- Reports on conferences
- Critical thoughtpieces
- Updates on policy in Wales
- Recent project successes
- Humorous items
- Images, photographs

The provisional copy deadlines for future issues of *Planning Wales* newsletter in 2007 are:

- Friday 25th May 2007
- Friday 17th August 2007
- Friday 2nd November 2007

Additions to the editorial team are also welcome, so if you want to help secure contributions to the newsletter then get in touch – HarrisNR@cardiff.ac.uk, 029 2087 6222.

Advertising in Planning Wales.

Opportunities exist to advertise in
Planning Wales newsletter.

The newsletter is circulated quarterly
to 900+ planners across Wales.

Rates are as follows:

- Full page advert - £250 plus VAT per issue
- Quarter page advert - £125 plus VAT per issue

A limited amount of advertising space is available for either individual newsletters or for multiple issues. Please contact HarrisNR@cardiff.ac.uk for availability.

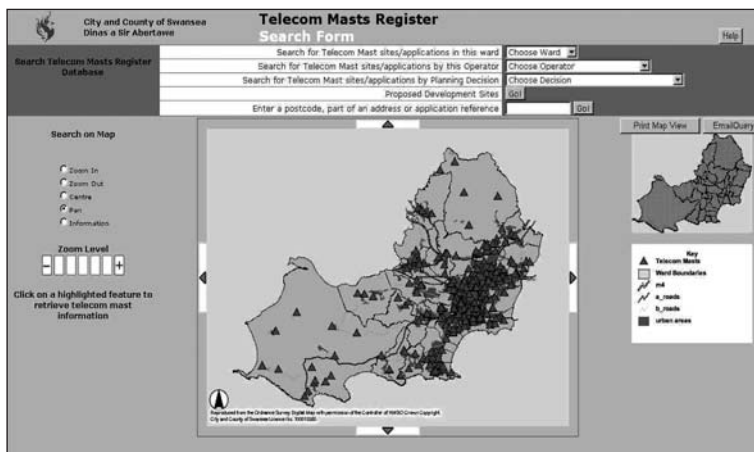
SWANSEA'S ON-LINE PHONE MAST REGISTER – A FIRST FOR WALES?

Nick Mills introduces Swansea City Council's innovative new register...

Looking for a model of good practice on mobile phone masts? Need an innovative solution to managing related information? Well, if so, it is worth taking a look at Swansea Council's recently launched online Telecommunications Register: <http://www.swansea.gov.uk/telecommasts>

Developed in partnership with the Mobile Operators Association (MOA), the system is designed to provide 24/7 access for Council Officers, Councillors, Mobile Phone Operators and the public, to information on the site location, operator(s), planning history, and technical details of all mobile phone masts and other equipment in Swansea.

Searching the Register couldn't be simpler. Users can navigate around an interactive map of Swansea, zooming in and out, and, by clicking on the mast site(s) they are interested in, call up on screen a wide range of information - including a photograph, location plan, mast specification, and information on the planning application/decision. Alternatively, the user can search by Electoral Ward, operator name or by planning decision type,



The search form on Swansea's new telecommunications mast register.

simply by clicking on their choice from a drop-down list. And the options don't stop there. Searches can also be carried out by post code, planning application reference, and key words. The system also allows users to view areas and sites that have been identified by operators for the possible future location of masts, for which no formal application has been submitted.

Arup Cardiff Raise money for RedR

Lucie Taylor of the Cardiff office of Arup reports on some of the office's charity work...

February 14th 2007 not only saw the arrival of Valentines day, but also the day that all Arup staff worldwide were invited to wear red for the RedR charity.

RedR is a charitable organisation whose aim is to relieve suffering caused by disasters around the world. Fundraising initiatives (incepted by Arup in 2002) provide the essential finance for training of competent and committed personnel to humanitarian programmes worldwide. The money raised also helps RedR work with other agencies to improve the availability and effectiveness of relief personnel. Arup was one of founding patrons of RedR and are firm supporters of the charity, indeed many of RedR key members are employed by Arup whilst non members at Arup show their support by organising and taking part in fundraising events.

On RedR day Arup staff are encouraged to wear red and give a donation to the charity. Each year over 50 Arup offices world wide take part in helping to raise the profile of RedR and to raise in the region of £6000 between them. In five years Arup staff have raised over £20 000. As well as wearing red, fundraising activities take place and this year the Cardiff office staff wore red, coordinated a raffle and a cake sale. The office staff also hosted a presentation by linking into a talk by a



Staff from the Cardiff office of Arup supporting the RedR charity.

RedR representative, and a presentation from a member of staff at the Arup Leeds office who has had a placement with RedR. £200 was raised by Cardiff office staff alone and most of 284 staff really entered into the spirit of the day by wearing red and donating to the worthwhile cause. Lots of cakes were bought (and eaten!) and 7 lucky staff won prizes in the raffle. Suzanne Pritchard won the fantastic first prize donated by Holland House Hotel, Cardiff- a night's stay for 2 people in an executive club room. Thanks to all Arup staff who took part in this worthwhile event. If you would like to find out more about RedR please visit: <http://www.redr.org/> - the official website.

THESE THINGS ARE SENT TO TRY US

John Bowers provides a run-down on some of the anomalies and frustrations of working within the planning system...

More and more applications. More and more paperwork for each application. Is the answer really more and more Development Control Officers, or is the system slightly less than perfect? Here are some examples, based on my time as a Development Control Officer with Snowdonia National Park Authority. The opinions in this article are not necessarily those of the Authority.

1. Nearly 50 years after the Arton Wilson report, which led to the Caravan Sites and Control of Development Act, 1960, local authorities are still using Enforcement Notices against illegal caravan sites, instead of prosecuting under the 1960 Act.
The commentary in the "Encyclopaedia" that caravan sites "...caused more litigation under the town planning Acts than any other development." is coming true again.
2. If you want to mess about with a Listed Building, you don't have to pay Value Added Tax on the building works. If you opt for sensitive repairs, the Chancellor demands his cut of 17.5%.
3. You apply for consent to display an advertisement, using a professional agent. Your application is refused consent by a qualified local authority planner under delegated powers. Your appeal will be decided by an un-qualified "Inspector".
4. Take a two storey house. 6 or 7 metres to the roof ridge. All "permitted development" rights apply. The maximum height for a helter-skelter in the back garden of a house outside a "sensitive area" is 3 metres- 4 metres with a pitched roof. In a Conservation Area or National Park or an Area of Outstanding Natural Beauty, the helter-skelter can be as high as the ridge of the roof of the main house, whatever type of roof.
5. Local Planning authorities have 21 days to issue a "screening opinion" requiring an Environmental Impact Assessment. The Welsh Assembly Government once took 57 weeks to confirm that an Assessment was needed for the "deemed planning application" element of an enforcement appeal.
6. Seven years after the current Environmental Impact Assessment Regulations were published no one knows what an "urban development project" is. Theoretically, even house extensions need a "screening opinion" in a National Park before they can be built as "permitted development".
7. Television broadcasts began in the 1930s. It took until 1988 for the General Permitted Development Order to mention television aerials. Early satellite dishes were "permitted development" almost anywhere on a house. Restrictions on dishes on front roofs and front walls were brought in much later. Your neighbour's grotty dish could be exempt, and your tasteful dish could need permission.
8. When governments wanted to support satellite television companies, they were quick to create "permitted development" rights for satellite dishes. Governments claim to support alternative energy, but have still not got around to enacting specific "permitted development" rights for solar panels in National Parks, Conservation Areas or Areas of Outstanding Natural Beauty.

9. A new fence between 1 and 2 metres high needs planning permission if "adjacent" to a highway used by vehicles. The word "adjacent" was substituted for "abutting" to reduce uncertainty! I once spent half a day in a public inquiry listening to arguments about what "adjacent" meant. In the Isle of Man the critical distance is 5 metres from a highway. In Scotland it is 20 metres. A tape measure settles the argument, rather than lawyers and an Inspector.
10. The Licensing Act 2003 requires applicants to notify the Local Planning Authority. A Licensing Authority can still grant a licence for late opening by a takeaway restaurant even if staying open after 11.00PM is prohibited by an Enforcement Notice.
11. You can get a Goods Vehicle Operator's Licence from the UK Government even if using the specified operating base is prohibited by an Enforcement Notice issued under the Planning Act.
12. The current limit for an appeal against a refusal of planning permission is 6 months. There is no time limit for an appeal against a refusal of a Lawful Development Certificate. This means that an application for a certificate which was refused can never be "finally disposed of". A crafty developer could appeal years afterwards as a method of delaying a verdict on a prosecution for failure to comply with an enforcement notice.
13. "Piloti" in "Private Eye" regularly berates local authorities for not using their powers to repair Listed Buildings which are falling into ruin. In 1997 and 1998 my Authority spent over £12,000 on emergency repairs to a Listed property. The owner was asked to pay the builder's costs plus 30% for time spent on the case by the Authority's conservation architect and other officers. The owners appealed against the bill. An qualified inspector held an Inquiry. He recommended that the owners be required to pay the builder's costs plus 10%, - £13, 475.53 in total. Over a year later a Civil Servant, who declined to state any qualifications or authority, wrote to say that the Authority could recover only £6,740.19.
It seems that the Government would rather NOT see the statutory powers for emergency repairs to listed buildings actually used.
14. The Welsh Assembly Government requires 3 copies of all Environmental Impact Assessments. The EC Directives on Environmental Impact Assessment require GOVERNMENTS to ensure that EIAs are up to standard. Governments in Britain believe that any comment on an EIA before an appeal would be prejudicial. It seems that only judicial review would prevent an authority approving a proposal with an EIA comprising the single sentence: "The benefits of the development outweigh any adverse environmental effects".
15. If you have an agricultural holding of more than five hectares, you must apply for prior approval for a pond of more than 0.5 hectares. If you have less than five hectares, there is no size limit on a pond as long as it is not for fish farming and you can claim that it is reasonably necessary for other agricultural purposes on that holding.
16. You want to replace an old caravan by building a chalet using local timber, assembled on site from materials brought on normal lorries. You need planning permission for a building. You must apply for permission and pay the fee. If the site is not in a town or village, permission could well be refused. An identical looking chalet could arrive on the back of two wide vehicles, causing enormous disruption to traffic and not need planning permission.

You can connect up to mains services, and put fancy brickwork around the base and it still won't need a planning application.

17. A national flag flown from a vertical flagpole has "deemed consent" under the Town and Country Planning (Control of Advertisements) Regulations 1992. A flagpole flying a national flag at 45 degrees needs consent. This contrasts with most "permitted development" criteria, where the higher the erection, the more likely that an application will be needed. Republicans should note that the Royal Standard is not a National Flag. A separate strict liability criminal offence is committed every time the Royal Standard is flown from Windsor Castle etc. to indicate that Her Majesty is in residence.
18. Councillors receive reports on planning applications three days before the Committee meeting. These reports are public documents. So are Planning Inspectors' reports. All would expect to go to prison if found accepting

hospitality from a developer. Ministers are paid far more than Inspectors, local authority councillors and planners. Their decisions are made in private. Advice from their Civil Servants is given in secret. Ministers can accept lavish hospitality from any developer as long as it is declared. Failure by a minister to declare hospitality might result in adverse publicity, but so far there has not been a single prosecution.

19. Most applications are decided by local planning authorities within 8 weeks of receipt. Ministers can and do take longer than that just to "call in" an application without in any way showing embarrassment.
20. An oil tank in a back garden is "permitted development". All domestic gas tanks need planning applications. Storing bottled gas at home-which is a factor in far more fire tragedies than gas from fixed domestic tanks-is not "development".

John Bowers

Planners in the Workplace

Planners in the Workplace was launched by the Institute as a new initiative in June 2006. It is a service for members that provides advice and support on various issues affecting planners in the workplace. It includes an Employment Law Helpline, as well as a network of advisors on more specific or specialist issues related to planning. Advice has been provided to planners in both consultancies and local authorities on

issues from accusations of planners colluding with developers in securing planning permission, and management pressure on officers to amend recommendations on committee reports, to the downgrading of posts within organisations. Further details of the initiative and services to members can be found at the Institute website – www.rtpi.org.uk

Planning Summer School is coming back to Swansea!

Planning Summer School makes its way back to Swansea in 2007. The School for elected members takes place 31st August to 4th September, while there are two separate Schools for planners (4th-8th September and 8th-12th September). Topics addressed this year include climate change, sustainable construction, design, effective practice in spatial planning,

design quality and sessions on planning law updates and progress being made in development plans. The Schools will also be an opportunity to showcase best practice within Wales.

Full programmes and booking forms are available at www.planningsummerschool.org

LDP Pathfinder Group South East Wales

The South East Wales Pathfinder Group is made up of a number of planning authorities that have started work on their local development plan. The group meets on a monthly basis and shares information and expertise on a range of different matters surrounding the new process.

At the last meeting of the Pathfinder Group the following issues were discussed:

- **LDP Training Issues**
- **Appropriate Assessment & the possibility of joint working**
- **Coal Reserves and the availability of information**
- **Special Landscape Areas and the possibility of jointly commissioning**
- **consultants to advise on criteria**
- **Gypsies & Travellers and the possibility of joint working to**

- **establish need**
- **Consultation Techniques**

The group is currently looking at software that will support them through the new system. They would be grateful to hear from other authorities that have already been through this process and their individual views on different software packages - in particular how they are working in practice. Please e-mail development.planning@rtpi.org.uk with any comments.

If you have any information you would like to share with the Pathfinder Group, particularly in relation to the above issues or if you would like to update us on the discussions taking place within your local group please contact development.planning@rtpi.org.uk

Cardiff School of City and Regional Planning – 40 years alumni event

Sarah Woolley of Cardiff University's Alumni Office reports on the School's alumni event that took place towards the end of last year...

Cardiff School of City and Regional Planning celebrated 40 years of planning education in Cardiff with a special alumni event held in November 2006. A half-day conference, a study tour and a series of social events took place on 10th and 11th November, with over 100 past students of the School attending over the weekend.

The conference titled 'Planning and Regeneration in Cardiff 1975-2020' revisited the past planning and development of the city and discussed how Cardiff might address the economic, social and environmental challenges it faces in the future. Seminars – many based on contributions to a new book *Capital Cardiff 1975-2020: regeneration, competitiveness and the urban environment* - were delivered by Kevin Morgan, Gill Bristow, John Punter, Chris Yewlett, Cliff Guy, Andrew Flynn and Neil Harris, all of which are current members of staff in the School.

The conference was followed by a drinks reception which took place in the beautiful Glamorgan Building which is now home to the School. The reception was sponsored by the Cardiff branch of Nathaniel Lichfield and Partners and many NLP employees joined us for the evening. There were over 150 attendees during the reception, most of whom were alumni but there were plenty of current students mingling about and numerous members of staff came to mark the occasion. Current students thoroughly enjoyed the opportunity to network with consultants, private practice and local authority planners, taking advantage of the wealth of experience and expertise in the room! Equally, past graduates enjoyed sharing their university experiences with our current students and questioning them on the School's recent news and developments. Speakers included Professor Terry Marsden, Head of School and Cardiff Alumnus and Assembly Member Sue Essex, who formally welcomed alumni back to Cardiff and complemented the School on being a 6* and innovative planning school. For many, the celebrations continued into the evening by dining in city centre restaurants.

To follow the discussions on Friday afternoon on the extensive regeneration of Cardiff Bay, alumni were invited to see it for themselves and take a study tour of the newly developed harbour and barrage in Penarth Marina and of the National Assembly's new debating chamber in the bay. The tour of the barrage and local area was led by Cardiff Bay Tours whilst the tour of the Senedd was led by Richard Wilson who was Head of the New Building Team and is now Director of Capital & Property for the Welsh Assembly Government. Those who visited the £67m building, designed by Richard Rogers, were impressed by the unusual architecture and its "green" principles using energy-saving and recycling features. Lunch was served in the quaint Norwegian Church.

The weekend culminated with a Celebratory Dinner, once again held in the Glamorgan Building. 80 alumni joined staff



The dinner to celebrate the School's 40th anniversary was held in the Committee Rooms of the former Glamorgan County Hall, with pre-dinner drinks served in the Council Chamber where a series of photographs of past student days were displayed in a presentation.

from the School for a drinks reception in the council room whilst watching a slideshow which displayed pictures of the original planning school in Greyfriars Road and photographs provided by alumni of nights out, field trips and sports tournaments. Following dinner there were speeches by Owain Wyn (1978 alumnus), Janet O'Neill (1972 alumnus) and Lyn Powell (1974 alumnus.) Professor Terry Marsden closed the formalities with a note of thanks and an encouragement to enjoy the opportunity to reminisce, celebrate and mark in style 40 years of planning success at the University.

We were delighted to see so many people over the weekend so please keep us up to date with your home and business contact details if they change in the future. Also, if you are in contact with other people who didn't attend the reunion, then please encourage them to get in touch. There has been lots of discussion about future events so we don't want anyone to miss out! All you need to do is keep your details up-to-date by visiting our website - <http://www.cardiff.ac.uk/for/alumni/index.html> - or email the Alumni Office at alumni@cardiff.ac.uk

NEW STRUCTURE FOR RTPI CYMRU MOVES FORWARD

Terry Stevens, Branch Chairman for 2007, reports on the new structures for RTPI Cymru...

I am delighted to report that following members' approval at the AGM in December the proposals for the restructuring of RTPI Cymru were formally approved by the Institute's Executive on 13th December 2006.

This restructuring involves the creation of a new Management Board responsible for supervising, promoting, and directing the Institute's work in Wales. The Management Board will be supported by two Fora, the first of which is the Policy and Research Forum, dealing principally with planning policy work, including consultation responses and preparing policy statements. The second Forum is the Professional Development, Marketing and Events Forum which will be responsible for the promotion and development of the profession in Wales, including the development of the Chapter network and the promotion of CPD events.

It is intended that the new Management Board will meet approximately five times a year (with the majority of meetings held via video conference). Similarly each Fora will meet approximately four times annually, again taking advantage of video conferencing for the majority of meetings.

With regard to membership of the Management Board and Fora expressions of interest will shortly be invited from members.



Owain Wyn welcomes Terry Stevens to the position of Chairman of RTPI Cymru for 2007 at the Annual General Meeting in Wrexham in December 2006.

A further significant change is the creation of a new full time post of Head/Director of RTPI Cymru. The postholder will be responsible for supporting the Management Board in developing the presence and influence of RTPI Cymru including the development of improved links with other professions.

The changes outlined above are intended to increase the profile of the Institute in Wales and hopefully will provide greater support to members.

RTPI Cymru supporting the homeless in Wales

Owain Wyn presents the cheque for the money raised at the Chairman's Annual Dinner to the Chief Officer of GISDA, Mair Jones. GISDA is a charity that helps young homeless people in the Gwynedd area (see www.gisda.co.uk for further information). The money was used to help a group of GISDA's young homeless people attend an international homeless congress in Denmark where they presented a play based on their experiences of being homeless in Wales.



NEWS FROM THE NORTH WALES CHAPTER

AGM

The Chapter annual general meeting was held at the North East Wales Institute, Wrexham on 1st December 2006 after the Branch meeting.

The most popular North Wales event held in 2006 was on Planning and Flood Risk, with speakers from the Welsh Assembly Government and the Environment Agency put on the spot by planners from both sides of Offa's Dyke. The Chapter also played host to events on Strategic Environmental Assessment and on Regeneration. We sent a delegation on a study tour to the Greater Dublin area.

Continuing Professional Development (CPD) for 2007

The Chapter exists to promote continuing professional development in north Wales.

The Committee would like your ideas on possible events for 2007.

Some of our ideas are:-

A Planning Law update provided by a barrister from chambers which specialise in planning.

Affordable Housing aimed at housing associations and house builders as well as local authority planners. Probably best after the Welsh Assembly Government training sessions for Local Planning Authorities on affordable housing.

Design - with emphasis on sustainability or designing out crime.

Site visits - perhaps to Glyn Rhonwy, Llanberis, (potential site for a large leisure complex) Snowdon, (new summit building under construction) and Brymbo (regeneration on site of former steel works).

Welsh Language – The Welsh Assembly Government has commissioned research.

The best time for an event would be following publication of research findings.

A Social Evening – perhaps with a quiz.

Please contact me with any of your ideas at john.bowers@eryri-npa.gov.uk, or at Snowdonia National Park Authority, Penrhyndeudraeth, Gwynedd LL48 6LF.

John Bowers, Secretary, North Wales Chapter, Royal Town Planning Institute

NEWYDDION O GELL GOGLEDD CYMRU

CCB

Cynhalwyd cyfarfod cyffredinol blynyddol y Cell yn Sefydliad Gogledd Ddwyrain Cymru, Wrecsam ar Ddydd Mercher, 1af Rhagfyr 2006 ar ol cyfarfod y Cangen. Y digwyddiad mwyaf poblogaidd yn y Gogledd yn 2006 oedd un ar Gynllunio a Pheryglon Llifogydd, gyda chynllunwyr o'r ddwy ochr Clawdd Offa yn chwilio am atebion oddiwrth siaradwyr Llywodraeth Cynulliad Cymru ac Asiantaeth yr Amgylchedd. Cynhelodd y Cell hefyd digwyddiadau ar Asesiad Amgylcheddol Strategol ac Adnewyddu. Anfonasom hefyd ddirpwyaeth i Fro Dulydd, Iwerddon ar daith astudiaeth.

Datblygiad Proffesiynol Parhaol

Mae'r Cell yn bodoli er mwyn hybu datblygiad proffesiynol parhaol yn y Gogledd.

Hoffai'r Pwyllgor dderbyn eich syniadau ar gyfer digwyddiadau posibl yn ystod 2007.

Dyma rai o'n syniadau ni:

Cipolwg ar ddatblygiadau cyfoes mewn cyfraith cynllunio, gyda bargyfreithiwr o siambr sydd yn arbenigo mewn cynllunio.

Tai Hyfforddiadwy yn anelu at gymdeithasau tai ac adeiladwyr tai yn ogystal a chynllunwyr awdurdod lleol. Efallai ar ol hyfforddiant gan Lywodraeth Cynulliad Cymru ar gyfer Adurdodau Cynllunio Lleol ar dai hyfforddiadwy bydd yr adeg gorau.

Dyluniad - gyda phwyslais ar gynaladwyaeth neu dylunio rhag drosedd.

Ymweliadau maes - efallai i Lyn Rhonwy, Llanberis, (darpar safle ar gyfer gweithgareddau hamdden sylweddol), Yr Wyddfa (adeilad y Copa newydd yn cael ei godi) a Brymbo (adnewyddu safle hen waith dur).

Yr Iaith Gymraeg – Mae Llywodraeth Cynulliad Cymru wedi comisiynu gwaith ymchwil. Buasai adeg gorau am ddigwyddiad ar ol cyhoeddiad canlyniadau'r ymchwiliad.

Noson Cymdeithasol – efallai efo cwis.

Bydd croeso i chwi gysylltu gydag eich syniadau trwy john.bowers@eryri-npa.gov.uk neu i Awdurdod Parc Cenedlaethol Eryri, Penrhyndeudraeth, Gwynedd LL48 6LF John Bowers, Ysgrifennydd, Cell Gogledd Cymru, Sefydliad Cynllunio Trefol Brenhinol.

DIARY - Spring 2007

Tuesday 27 March 2007. *Design and Access in Planning and Development in Wales.* A special Young Planners Event including speakers from Disability Wales, Design Commission for Wales and the Welsh Assembly Government. All welcome, especially Young Planners. 5.00pm, Committee Rooms, Glamorgan Building, School of City and Regional Planning, Cardiff University.

Thursday, 26 April 2007. *Disability, Equality and Access in Planning.* A special event in Llandudno organised by Planning Aid Wales and Disability Wales. This event is free for Planning Aid Wales and Disability Wales volunteers. For other delegates there is a charge of £50, which includes lunch. For further information, or to register, please contact Marika Fusser on 01286 882834 or marikafusser@btconnect.com by 26 March 2007.

14th-15th June 2007. *The 2007 Planning Convention,* Queen Elizabeth II Centre, London. Visit www.hawksmere.co.uk for further details.

29th-30th June 2007. *International Conference on China's Urban Transition and City Planning.* Sponsored by: *The Leverhulme Trust.* Jointly Organized by: Urban China Research Centre and Urban Planning Society of China, PRC. Visit www.cardiff.ac.uk/cplan/ for further information.

September 2007. *Planning Summer School,* Swansea. See www.planningsummerschool.org for further details.

For email updates of events in Wales, please register your email address with wales@rtpi.org.uk