

# EAST OF ENGLAND EXPRESS

Winter 2011

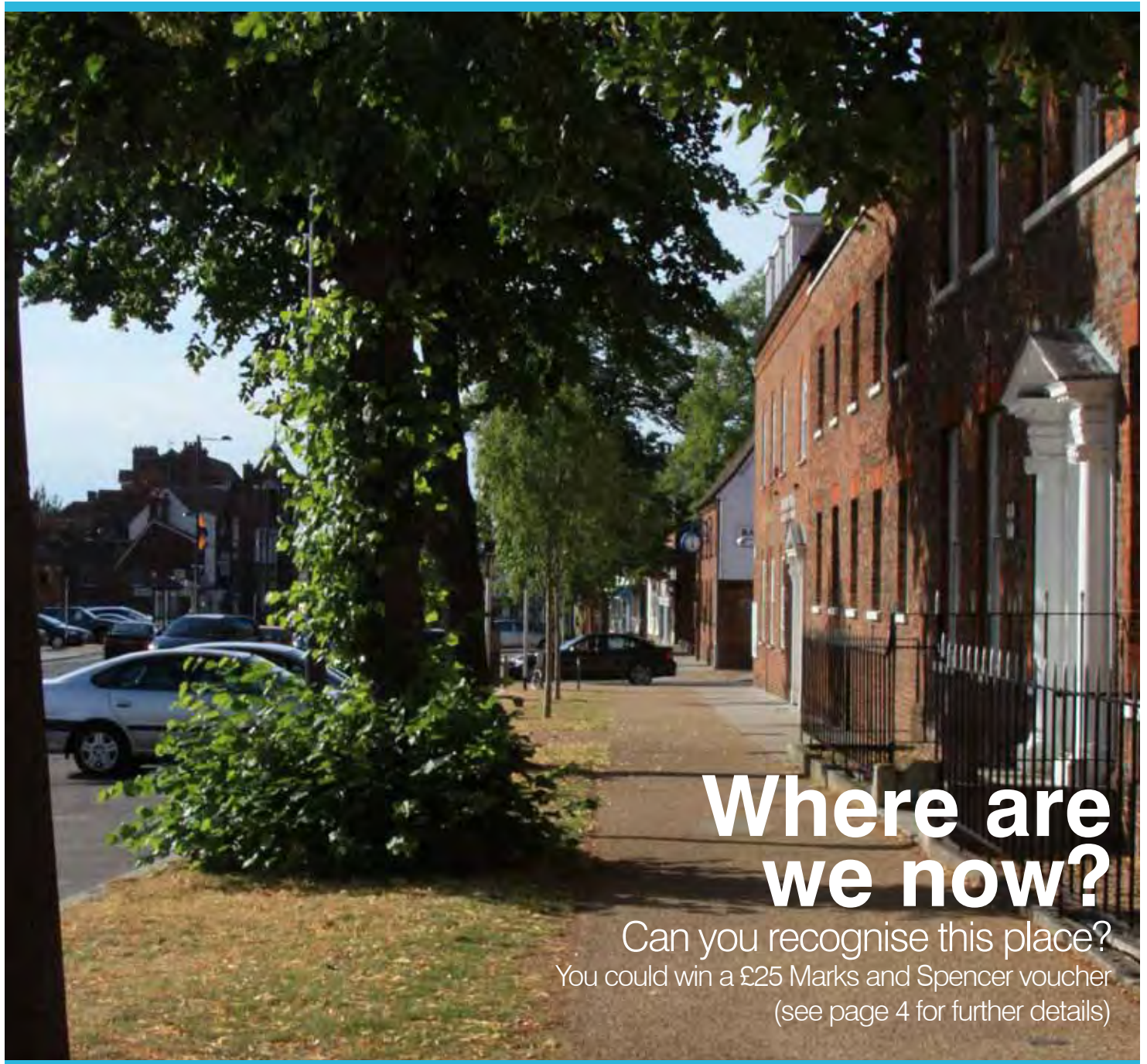
SERVING PLANNERS IN  
BEDFORDSHIRE  
CAMBRIDGESHIRE  
ESSEX  
HERTFORDSHIRE  
SUFFOLK  
& NORFOLK



**RTPI**

mediation of space · making of place

Newsletter of the RTPI East of England  
[www.rtpi.org.uk/rtpi\\_east\\_of\\_england](http://www.rtpi.org.uk/rtpi_east_of_england)



## Where are we now?

Can you recognise this place?

You could win a £25 Marks and Spencer voucher  
(see page 4 for further details)

INSIDE • [The Last Post](#) • [Conference Programme](#) • [Economic Base](#)  
• [Your Committee](#) • [Letters](#) • [56 Chairs](#) • [Regeneration Awards](#) • [Biodiversity](#)  
• [Planning Aid](#) • [Young Planners](#) • [Your Board and Committee](#) • [Electronic Newsletter](#)  
• [The Saga Goes On and On](#)

This edition of the East of England Express is sponsored by

**David Lock Associates**  
Town Planning and Urban Design



# EDITORIAL Newsletter of the Royal Town Planning Institute East of England

## The Last Post

**As the sun sinks slowly in the west behind the twin towers of St. Pepsi's Cathedral we reflect on the fact that this, this document that you hold in your hand right now, dear reader, is the last, yes the very last paper copy of your newsletter, ever.**

From now on they will ping through the ether from the mysterious RTPI HQ web site—not quite the same-but that's progress (and it's cheaper)!

And talking of progress, we have had a fair bit of progress over the years:-

In the 80's it really was cut and paste - and then photocopying.

I well remember the excitement when the Branch allowed me to purchase my very own cutting board and straight edge –it was 3 years later that I was allowed a knife!

And those ancient artefacts are still around – in a cardboard box in the Museum of East of England Newsletters in the basement.

Today of course it's all done by computer... it's now a lot easier to play around with the learned contributions –i.e. reducing them to an appropriate length, sorting out all those typos and grammatical errors and deleting superfluous words. I sort of enjoyed that part till we got articles of 3470 words that had to be reduced to 600 –then whole paragraphs ended up in the waste paper basket.

The other great thing we can do now is easily incorporate photographs – especially those ones of the backs of people at conferences with slightly blurred speakers –we take pride in selecting these!

-all done with the help of t'internet.

In the old days the editor, more or less, did the lot and then Tina came on the scene and turned the newsletter into a professional looking publication with her consummate computer skills.

My first effort at editing was in June 1987 when I volunteered on a temporary basis and have been doing it ever since. Before me there was a group of academics from Chelmer Institute, as ARU was called then, led by Joe Watson. Before that I have documentary evidence that Lynn Ballard was in charge –and again before her my old mate Roy Lewis dabbled with 'Pritt-stick' and scissors... and also did the editing!

That is as far back as my records go, but if our reader has any other info. please let me know.

Today the job is shared with our sponsors-first it was Barton Willmore, (sometimes with Bryant Homes /Taylor Woodrow) and now David Lock Associates (DLA) –and haven't they all done a grand job in reinvigorating the newsletter with their design skills. And, happily, DLA will be continuing to sponsor us for the next two years!

We must not forget of course the memorable drawings by David Fosh which led to our ground breaking front page quiz –which generates significantly more interest than anything else in the newsletter!

And of course I must mention the peculiar cartoons from Gibbon.

There are some other unsung heroes that we must thank –those dedicated people who stuff the newsletters into envelopes:- previously done by Tina, then Loretta, followed by Sharon and that honour now goes to our Clerical Assistant, Jean Aldous.

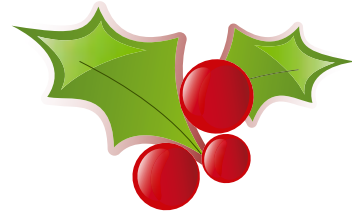
So as the lone bugler from the Oosedam and District Silver Band hauntingly and surprisingly in tune, plays the last post we send the final approved version of the newsletter to DLA for printing –for the very last time.

But there is good news because we will still be here next year to produce our first ever all electronic newsletter. How exciting! So keep sending in all those article and pictures etc.

So from all of us up here on the top floor of Orient Towers (the Post Office would not let us change the name!), let me wish you all a very Happy Christmas and a Prosperous New Year.

**Peter Hakes, Editor**

**“have a very merry christmas!”**



## Helping members to attend conferences

East of England semi-retired, fully-retired and full time student Members in full time education are able to attend conferences at a subsidised rate. A carer's allowance may also be available for those Members who have to make special care arrangements to attend a Regional event.

For further details contact Tina Jessup – details on Page 3.



### Next Issue

The next issue should be published in Spring 2012. Deadline for copy is 15 February 2012 to: The Editor Peter Hakes, PO BOX 11102, Brentwood, CM14 9JQ  
Tel:01277 220043  
email:peter@hakes3334.fsnet.co.uk



### Acknowledgements

Editing: Peter Hakes/Tina Jessup  
Design: David Lock Associates  
Printing: New World Creative Print Ltd  
Distribution: Jean Aldous  
Thanks to all contributors

Notice to Readers: The RTPI East of England Regional Management Board wish to point out that the sponsors have had no editorial role in the production of this newsletter and the Board does not endorse the sponsors or have any view on any matter on which they are involved.

Registered Charity No. 262865 and Scotland SC 037841

This edition was sponsored by: **David Lock Associates**  
Town Planning and Urban Design



# REGIONAL EVENTS PROGRAMME 2012

## Theme:

### “Planning & Planners: adapting to change...in a changing environment”

With comments in recent feedback forms such as:

- “very informative and thought provoking”
- “brilliant and interesting conference”

These events offer a very high calibre of speaker, and they provide you, the local member, with an opportunity to keep your knowledge up-to-date and to network with other members, without spending a fortune on training. These conferences are

excellent value for money – national quality speakers without paying London prices.

To keep up-to-date with the programme visit the Region's web site at [http://www.rtpi.org.uk/rtpi\\_east\\_of\\_england](http://www.rtpi.org.uk/rtpi_east_of_england) or email Tina Jessup at [eastofengland@rtpi.org.uk](mailto:eastofengland@rtpi.org.uk) asking to be included on the Region's email circulation list.

## CONFERENCES & EVENTS FROM JANUARY TO DECEMBER 2012 (Note: events are also open to non-members)

| TITLE                                | DATE        | LOCATION              | COST+VAT                  | COMMENTS   |
|--------------------------------------|-------------|-----------------------|---------------------------|--|
| ENERGY AND SPATIAL PLANNING          | 10 February | Ipswich               | £90                       | Regional study findings included   |
| CONSERVATION & SUSTAINABLE DESIGN    | March       | Tbc                   | £90                       | Joint with IHBC: sustainability and climate change/energy conservation issues while protecting historic environment  |
| CAREERS                              | March       | Ipswich               | FREE ½ day                | Redundancy issues with Chris Sheridan, RTPI Planners in the Workplace Manager  |
| CAREERS                              | April       | Chelmsford            | FREE ½ day                | Sudden promotion and increased responsibilities, with Chris Sheridan   |
| MINERALS AND WASTE                   | 25 April    | Waterbeach            | £90                       | Includes a tour of the Waterbeach Waste Plant  |
| ANNUAL GENERAL MEETING               | 15 May      | Bury St. Edmunds      | FREE                      |  |
| MEET THE PROFESSIONS                 | May         | Hughes Hall Cambridge | £50 per ½ day session     | Short presentations by allied professionals. Interaction and understanding. No lunch provided  |
| COUNCILLORS CONFERENCE               | June        | Welwyn Garden City    | £100                      | Will include Localism Bill and Neighbourhood Planning. Parish Councillors being invited  |
| MARINE PLANNING                      | July        | Great Yarmouth        | £50                       | ½ day follow-up to the successful 2011 Conference  |
| NEIGHBOURHOOD AND COMMUNITY PLANNING | September   | Ely                   | £90 full day or £50 ½ day | Will include Localism Bill and Neighbourhood Planning. In association with Planning Aid  |
| PRESIDENT'S VISIT                    | September   |                       |                           |  |
| MASTERCLASS SESSIONS                 | October     | Ipswich               | £90 full day or £50 ½ day | a.m. EIA's, SEA, SA<br>p.m. Enforcement and Development Management Surgery   |
| EAST OF ENGLAND PLANNING LAW UPDATE  | 9 November  | Cambridge             | £150                      | One 'free' place for self-funding delegate signing up before 30th April 2012. The winner will be picked at random and reimbursed by The Planning Legislation Update Service - 'keeping you up-to-date all year round' - <a href="http://www.planninglegislation.info">www.planninglegislation.info</a> |

### Your support at these events is vital to ensure their success

Does your organisation have a suitable conference room that we could use? Or would your organisation be willing and able to sponsor one of these events by making a contribution towards the cost of a venue or towards the cost of lunch? In return, the organisation's name would be included on the conference literature and promotional material could be displayed at the event.

A “free” place or two would be available on the event for your employees.

Are there topics which you think should be included in the Events Programme?

Let us know as soon as possible to ensure your views can be taken into account during forthcoming discussions. Do you have an expertise in one of the suggested topic areas and would like to share your knowledge with other members?

\*\*\*\*\*

Any offers of help or assistance from Regional members would be very gratefully received.

Please help us to provide the Regional events you need.

Up-to-date information can be obtained from:

**Tina Jessup, Regional Co-ordinator,**

RTPI East of England

Tel: 01359 233408; Fax: 01359 232176; Email: [eastofengland@rtpi.org.uk](mailto:eastofengland@rtpi.org.uk)

Web: [www.rtpi.org.uk/rtpi\\_east\\_of\\_england](http://www.rtpi.org.uk/rtpi_east_of_england)

RTPI East of England Regional Office

4 Opus House, Elm Farm Park, Great Green, Thurston,  
Bury St Edmunds, Suffolk, IP31 3SH

## QUIZ - WHERE ARE WE NOW?

## LOCALISM



## Lucky Winner

Pru Khimasia-John  
of Central  
Bedfordshire  
Council

Well, what do you know –it's **Bedford** again-and why not? –we like to be totally random here!!

We are, of course at the corner of **Silver Street and High Street** where there resides "**Reflections of Bedford**" by **Rick Kirby**.

One of our competitors, Michael Brooks says that this is a controversial sculpture because, as well as being disliked by many local people, when constructed the sculpture displaced (and now dwarfs) the bust of Trevor Huddleston (born in Bedford) which had to be moved to a new position a few metres away.

This time **29** of you knew where it was, (but two of you were not members of the East of England Region of the RTPI, so have been disqualified!) but the first name out of the RTPI Mug, and pictured here, was **Pru Khimasia-John** who has been sent a **£25.00 gift voucher**.

Runners up were:-

Peter Freer, Katie Rodgers, Frank Stocks, Dee Walker, Katie Simpson, Christine Koller, Richard Koller, Philip Wilson, John Williamson, Jamie Cole, Alastair Wren, Richard Kelly, Charlotte Handscomb, Kim Hutcheson, Michael Presland, Ross Blumire, Rebecca Stroud, Ian Pickup, Clare Buddle, Natalie Westgate, Nicholas Ford, Marie Laidler, Peter Moss, Daniel Hewett, Michael Stevenson and Michael Brooks.

Well now it's your chance to win that valuable voucher.

All you have to do is decipher the photo on the front cover and tell me where it is!

Letters, post cards and e-mails (to address on page 2) will be eligible.

These will be kept in a secure place until 2 weeks before the closing date of the next issue. The first entry taken (by someone independent of the RTPI) from this secure place will be the winner. Only those on the East of England RTPI register will be eligible, except the Editor and staff of David Lock and Associates.

Good luck!

## In the world of planning 1946, 1947 and 1971 are notable historical dates; will 2011 be another?

15 November 2011

The Housing and Town Planning Act of 1919 is a little recalled piece of legislation but many commentators consider that it started off what we do on a daily basis, contribute toward the allocation of appropriate land for housing and ancillary uses. 1946, 1971, 1990 and perhaps to a lesser extent the 2000 Planning Acts were all viewed as dramatic changes to the way in which we regulate the use of land and buildings in England. So the questions that occur to me today, the day Royal Assent has been given to the much heralded Localism Bill are: will 2011 be remembered as being a turning point in our profession, will it matter and what is its likely impact on the way in which we live today and tomorrow?

In short, after a summer of localised discontent, agitation against capitalism in several of the world's major cities and riots and marches throughout Europe, no one actually knows. Our politicians and a number of Whitehall mandarins have come up with an idea and have consulted us, taken our views into account and have now made their ideas law. You could say that it is a bit of an experiment, but then again the earlier milestones were considered by some to be that also. The reality is that some elements will work, others will not, there will be consequential changes to the way we work and live that no one realised and in truth, knowing our politicians they will fiddle with the legislation again in a few years. They always have done so before so why not this time?

Whatever your view of life it is difficult to say that at the moment we are not living in 'exciting times'. I use the word 'exciting' advisedly as it covers the full range of emotions from worried, pensive, thoughtful through to ecstatic.

Our politicians consider that The Act paves the way for a number of important changes to the planning regime in England and Wales, including the abolition of regional strategies, the introduction of a general power of competence, removing pre-determination rules for Councillors and the creation of neighbourhood plans allowing local residents to draw up local plans, amongst others. It also prescribes a new obligation on developers to carry out pre-application consultation for major development schemes.

None of this is new. It has all been the subject of much debate in the last eighteen months. Indeed, the debate continues amongst commentators. However, whilst debate is healthy and is to be encouraged now is surely the time to sit down, think quietly for a period of time and then plan? No more delays. No more waiting for the next piece of legislation such as the NPPF. No more waiting for the next round of housing need assessments. No more waiting for grim news on the unemployment figures on Radio 4. All of these things will come to pass. We never will and never have had all of the legislative ducks in a line. So please after what has largely been a hiatus of almost two years lets plan. What for? How about to: protect our treasured environments, to provide decent housing for those that require it and to provide opportunities for jobs for members of our society that need them? The time for waiting has passed. We all now have a task to do. So let's do it and make 2011 memorable for it being the trigger for better proactive planning rather than another grey year of debate and inaction. As Lord Kitchener said in 1917: 'Your country needs you', to act now.

### Robert M Purton

Partner on behalf of David Lock Associates Limited  
The views expressed are his own.

## REGIONAL CONFERENCE 27.09.11

## The role of Local Authorities in supporting a new economic base

Hughes Hall College, Cambridge

Chair, **Eiluned Morgan** introduced the conference and said that presentations would be available on the RTPI East of England website. She referred to the Draft National Planning Policy Framework (DNPPF), and those outside of the profession who are writing about changes, including Will Hutton and Evan Davis. (See note at end).



She then introduced President **Richard Summers**, who referred to the polarised debate around the DNPPF and key questions including what exactly is "sustainable economic growth", why are the planners being considered as the enemy of enterprise" by David Cameron, and a view that 'we like planners but not the planning system'. The law of unintended consequences is a danger. The

RTPI publication "planning myths" is well worth reading and promoting.



**Anthony Barker**, Cambridge Econometrics, said that UK performance since the downturn from 2008 Q1 has been very different from that of the early 1990s, with GDP down 4% by 2011 Q1 and a shallower decline in unemployment. A small but fragile recovery started towards the end of 2009 but has since lost momentum. Compared to the pre-recession peak, the largest falls in

output were in manufacturing and construction. Unemployment is at 7.9%, but stands at 21% for those aged 16-24. There is a fear of "don't panic, we're doomed"! The East of England has weathered the recession rather well. There is a high skill base but not everywhere and proximity to London and SE has helped reduce the rate of fall-out in finance and business services. The job decline stopped in mid-2009 in the Eastern region, unlike the UK figures. Anthony noted that the recession has had little impact on migration to the East of England.

The future: global uncertainty. Government is possibly looking for Plan A+ to create jobs but can the private sector create enough jobs in view of the current climate and the acceleration of public sector job decline? A useful graph covering East of England Districts showed that unemployment has increased most where rates were already high and those localities hardest hit may also be more poorly positioned to recover. The rebalancing of the economy represents a significant challenge. There will be tension between sectorial and spatial rebalancing.

**Nicola Stauer**, New Economics Foundation, considered "**The emerging economic base; more of the same or an alternative approach?**" and posed four challenges;

- We are running out of Planet (using Rockstrom's "a safe operating space for humanity" and 15 out of 25 ecosystem types are at unsafe levels)
- Inequality- Prosperity is poorly spread. (Health and social problems are worse in more unequal countries)
- We have sold resilience for efficiency. Our economic, financial and social systems are vulnerable to shocks as never before.
- It is not translating into a "better life", (the correlation between GDP, consumption and well-being breaks down as the "Happy Planet index" figures for the UK shows).

She stressed pursuing job growth -not GDP growth in itself, supporting local initiatives, maximising benefits to communities from major development and investment projects, and moving towards changing the world of work say by redistribution of paid and unpaid work and a shorter working week/part time etc.

**Christine Doel**, SQW consultants considered "**How spatial planning influences economic prospects**" - with evidence from Cambridge" and stressed the importance of geography, the increasing importance of spatial planning as grant funded interventions dwindle, and the crucial need to understand the relationship between processes and geographies of local economic growth. This should be central to the evidence base that informs planning policies. A recent study aimed to assess the performance of Cambridge's economy post credit crunch, threats and opportunities and constraints to growth.

The Cambridge cluster had 5 key roles, each with a clear spatial footprint. These were;

1. **High tech business hub ( varied models with " sub ecosystems", some with strong London links)**
2. **Learning and research institutions**
3. **A Regional centre for public sector and other roles**
4. **A medium sized and growing city**
5. **An international tourism destination.**

Each role was thoroughly examined, including their characteristics and inter-relationships. Emerging components for an agenda for action in future were identified, including the need to recognise the 3 spatial scales of within cycling distance, within one hour of Cambridge and anywhere around the globe, and the radical reconfiguration of public sector. The study will inform the LEP.

**Nick Fenton**, Milton Keynes Council spoke of **“a Business Neighbourhood Plan for Central Milton Keynes (CMK)”**

The Plan for Growth (March 2011) stated that the Government will introduce new powers so that businesses are able to bring forward BNPs and neighbourhood development orders, reducing the need for additional planning consents. There was a bidding process. CMK has 25,000 jobs, and 2,300 residents with a further 5,000 planned for. A BNP would fit well with the CMK Development Framework and the transfer of MK Partnership’s land and staff was underway. CMK is a fully parished area and there is an active city centre management stakeholder group. There were important discussions on key CMK issues, including about tall buildings. The BNP could harness the considerable enthusiasm felt. A BNP would strengthen links between the council and businesses and forge new links with businesses that rarely engaged.

The BNP would help deliver planned growth at a time of economic downturn and improve the accessibility and attraction of CMK for businesses, residents and visitors. It would rebalance various views of the many and varied groups with a stake in CMK.

The role of the Council was seen to be policy setting, enabling, adopting a multi-departmental approach (e.g. economic development, transport and planning) and supporting/guiding.



**Sarah Richards**, Essex County Council, presented **“From LEP to Local - meeting the challenge”** and said that the Greater Essex LEP is the largest in the country including South Essex, Kent and East Sussex with 3.9m people, 32 LAs, 130,000 businesses and 1.3m jobs. It is a “construct” although there is a shared Enterprise Zone between Essex and Kent along the Thames. Considerable potential benefits were seen, including allowing businesses to

influence Government spending. Essex saw positive advantages for developing projects based on the strategic objectives of the LEP. These were securing the growth of Thames Gateway, promoting investment in coastal communities, strengthening the rural economy and strengthening competitive advantage of strategic growth centres. Essex developed an Integrated County Strategy (ICS) in December 2010 with the need for a clear vision for Greater Essex to prioritise and direct future investment. After considerable consultation, a wish list of 400 projects was reduced to a set of 16 investment priorities. Strategic priorities were set -Thames Gateway, key towns and low carbon energy, and priority themes developed. This was all mapped and provided a strategic guide to inform investment and articulating the needs of Greater Essex. It created an appetite for joint working to deliver economic growth. It showed that you can have a spatial vision outside the formal planning process. There was a deliberate omission of housing in this strategy. Case studies of positive results were given including improved broadband and low carbon development.



**Bill Newman**, Thurrock Council spoke on **“Employment and the LDF”**.

Thurrock was a UA, in 1998 having a population of 150,000. The Core Strategy was adopted in 2011 after considerable consultation including with businesses. Visioning is difficult sometimes and asking what you do not want is more revealing. The key drivers for the Plan were deprivation, industrial structure, population growth and character, educational achievement and healthy living. The Plan was job-led. Major investors do not want to see a see-saw approach and want certainty. New or improved infrastructure is needed e.g. improved Junction of A13 and M25.

The vision is to capture 23,000 jobs in 5 regeneration areas through inward investment, which will drive housing growth; jobs and housing growth will be facilitated by improved infrastructure. Twelve big projects have been identified - the challenge is to deliver!

**Questions** included the need to provide the right quality and quantity of employment land, the impact and value of the DNPPF (and how to improve it), the need for more market analysis, closer co-operation with employers and their needs, the requirement to gather a real evidence base for visions and plans (although cuts will be a potential problem here) and trying to modernise and rebalance local economies (e.g. knowledge based) although there is likely not to be enough to go round.

**Paul Maison**

**The following reading was recommended at the event:**

- |                          |                                       |
|--------------------------|---------------------------------------|
| Evan Davies              | Made in Britain                       |
| Matthew Crawford         | The Case for Working With Your Hands  |
| Will Hutton              | Them and Us                           |
| Tim Jackson              | Prosperity Without Growth             |
| New Economics Foundation | The Good Jobs Plan                    |
| Richard Layard           | Happiness: Lessons from a new Science |
| Tim Harford              | The Undercover Economist              |
| Government Audit         | Draft NPPF Impact Study               |



# YOUR COMMITTEE 22.09.11

## A Very Brief Summary

Held as always at West Suffolk House in Bury St. Edmunds -

Which, in reverse, is that famous Welsh town, 'Sdnumde ts yrub'.

**Robert Hobbs** chaired the meeting and welcomed the return of the Secretary, **Richard Chillingford**, following surgery. Robert mentioned the sad loss of **Steve Wilson**, who had died of heart failure on 10 September. Steve will be greatly missed.

## PLANNING AID PROGRESS REPORT

Stella Meesters and Rebecca Elson gave a short report. See items in last issue and this issue.

## COMMUNICATIONS WITH MEMBERS

It was established that the decision at the July meeting to cease mailings referred to conference notices and the newsletter, only. Mailing of other material, such as election notices and invitations to nominate entries to the Regional Planning Achievement Awards would continue.

A request for all members to ensure that the Regional Co-ordinator had their e-mail address is to be included in the autumn edition of the East of England Express. At present the Co-ordinator has e-mail addresses for approximately 1,450 of the Region's 1,900 members, leaving 450 reliant on paper communications. It is hoped that the circular will greatly reduce this number. However, if there is a significant number of members who will be left without means of receiving electronic information from the Region then this will need to be reviewed.

## TREASURER'S REPORT

Steve Bateman reported that the Region has a deficit of £10,845 and the income from the conferences held so far has been behind the budget forecast.

A difficulty arises from the way in which the RTPI compiles the accounts. The end of year (31st December 2010) accounts don't include income from the December conferences so the RTPI provided £8,000 at the end of the year in lieu of un-collected Conference Income, as a 'credit' for that year's 'debtors'. It is then taken away the following year, that is, this year, on the basis that the outstanding Conference income is expected to be collected (that is, of course, if the Conference delegates who owe us money actually pay) so that when the income does get recorded it doesn't inflate the 2011 accounts with 2010 income. When that income is considered against the inserted deficit it may be that we are not in so bad a position after all. Despite this, it is imperative that we maximise income from the remaining events in the Conference Programme to offset the reduced income from the earlier Conferences.

For the 2012 Budget, Steve reported that he has reduced the expected income from conferences (drawing on the experiences of conference finances this year) and he has also reduced the expected expenditure on printing and postage in line with the decisions taken at the July RAC so the resultant Budget is virtually balanced.

## CONFERENCE PROGRAMME 2012.

See page 3 of this issue.



## ARU EVENTS PROGRAMME AND JOINT WORKING

The events, organised by Lewis Herbert for Anglia Ruskin University, are aimed at Local Authority employees. The Local Authorities block book a certain number of places for the year ahead and staff attend as appropriate. Having secured the bookings for the year there is less pressure to produce a detailed programme and speakers are often identified at the last minute and many are paid. This is a totally different method of working from that used by the East of England RTPI, where detailed information is an integral part of the marketing of each individual conference.

John Dagg and Robert Hobbs, who had been the main contacts with Lewis Herbert were disappointed that joint working had not succeeded.

It was AGREED that Lewis Herbert be informed that the different approach to organising events made joint working too difficult. It was also AGREED that we should confine our co-operation with ARU and not with Lewis Herbert's commercial organisation.

## PLANNING POLICY WORKSHOP

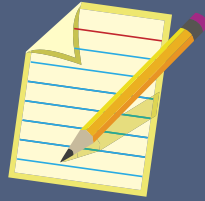
An invitation had been received from RICS East for an RTPI representative to join them at a Planning Policy Workshop on 7th October to look at how planning and development professionals can make the new system operate effectively. John Dagg and Paul Maison had agreed to attend and would report back.

**This is only a very brief outline of the detailed and meaningful discussions that took place. The full minutes can be obtained from Tina Jessup. If any Member feels the urge to join the fray at these exciting meetings please contact Tina, for details of dates, times etc. (see address on page 3)**

**It is hoped to report on the 7th November Meeting in the next newsletter.**

## LETTERS TO THE EDITOR

## Letters to the editor



**Dear Pete** (sorry darling... I know you don't like being called Pete!),

New Beginnings...

So it's all change at your end eh?

Good luck for your foray into the virtual cyber regime-or what ever it's called!

You certainly have done a good job in editing the paper version-or so you keep telling me!

Of course your sister newsletter 'Planners Up front and On Top', edited by little old sex kitten me, will continue in paper form! It's still available on the top shelves or sent to home or work- place in a plain brown paper wrapper.

So if your reader from Burnham on Crouch wishes to feel the sensuous touch of highly glossy paper in his or her hands rather than gazing goggle eyed at a computer screen, why not subscribe -details on page 28.

By the way, had a lovely chat with your new boss Trudy the other day-she really liked the sound of our alternative periodical with its hands-on raunchy, gritty, real planning ambience -so we're going to have a cosy little chat at the V and A next week to talk about rolling it out in the other regions-yes I could be expanding-I am a bit 'front loaded' already, as you development planners say! Now what should I wear? Something not too tarty -should show a bit of leg -they are two of my best assets and a bit of cleavage? -what do you think Pete?

Sorry, I am digressing... my mind does wander... as you, dear Pete, know only too well...

Is that the time? I must fly... I am supposed to be posing for our Xmas issue -some tasteful black and white shots of me dressed as an enforcement officer -often described as the Cinderella of the planning profession -well we are aiming to redress that stereotype!!

All my luv

Natasha xxx

PS

I hope your reader is still enjoying the continuing saga of the Muggewort family as described by Marcia Worspittal on the penultimate page of your newsletter - sorry they don't appear to be in any particular order but that is apparently part of her style and she insists that they don't need to be!! Sorry to be the bearer of sad tidings but I have about another 58 of these stories for you! To be honest we haven't actually printed them in our mag.- I mean to say they are a bit naf!.

PPS

Uncle Abraham (he's not really my uncle) sends his best wishes to you and all his chums at the Inspectorate -he says there will be a 'gentleman's evening' next Tuesday at the Double Glaziers Arms, all welcome.

**Dear Herr Hakes,**

Electronic Newsletter

May I present the Seasons Greetings to you, from all here at BECU, ECBU or what ever it's called, at this momentous time as you at last embrace the concept of sustainability!

Yours academically

Kurt Manifold, Direktor, Part-time Professor Cleve Vague, Manice Jawfit -European Research Co-ordinator, Phonee Ti-son (Freelance -Cooking and Planning Module) and Dr Miles Bromley -Environmental Guru.

PS

The scurrilous rumours about me and Ms. Ostrogoth, Head of HR, are, totally unfounded. I repeat, totally unfounded.

**Dear Mr Hakes**

Editorial in Autumn Issue

As avid readers of your magazine we are always quietly amused at your attempts to introduce regional dialects, as an attempt to stretch the linguistic skills of your reader and provide a touch of culture.

However our Bradford and Bingley Branch are very upset by your last editorial purporting, as it did, to be from the Secretary of State, no less.

To illustrate our concerns we would draw your attention to one particular word on the last line of the fourth paragraph which grated on our sensitive ears -the word was of course 'oat', which from the context we presume was meant to be 'out'. However applying the gold standard measure for Bradford Dialects -'The Gordon Reeds', "Sowwy joost speekin alowwwd" template, the word should have been rendered as 'owwwtt'. Clearly the word you did use, emanated from either Bolton or Blackburn.

Sorry to be so pedantic at this festive time of year, we nevertheless wish you well in the electronic world and hope that you have a very Happy Christmas and a 'reet grant neow yeearl' (note the Halifax intonation, here)

Yours sincerely

Sir Ewan Grintfortech-West, MFI,

for the Society for Accents and Dialects in the North Countrie.



### The Editor replies:-

The text was, in fact, supplied by a person or persons unknown at DCLG-we did not alter it in any way. However we anticipate an avalanche of responses to this correspondence.

## 56 Chairs!

In order to commemorate the publication of this, the last ever paper copy of the Regional newsletter, the Hon. Sec. Richard Chillingford, has, at great personal risk to life and limb, delved into the archives to compile this interesting list of chairmen and chairs of the East of England branch and region.

Unfortunately we don't have full details of where they worked –if indeed, they did- so if our reader has any info. please let us know. It would also be marvellous to hear from anyone who has any little anecdotes about them that they may wish to share.

|         |   |      |   |
|---------|---|------|---|
| 1955/56 | S G Roff-Marsh  | 1986 | Ged Griffiths, Hertfordshire County Council                                 |
| 1957/58 | P G Laws  | 1987 | Richard High, Norfolk County Council  |
| 1958/59 | G E Betts   | 1988 | Dan Glading, Essex County Council   |
| 1960/61 | J M Gorst, West Suffolk County Council  | 1989 | Richard Woolley, previously of Anglia Polytechnic                           |
| 1961/62 | L G Robinson  | 1990 | Keith Clarke, previously of Huntingdonshire District Council                |
| 1962/63 | L N Fraser, Essex County Council  | 1991 | Richard Summers, private practice, now RTPi President                       |
| 1963/64 | H J Lowe  | 1992 | Alan Gomm, South Norfolk District Council                                   |
| 1964/65 | R H Moody, Essex County Council   | 1993 | Nicky Jenkins, East Cambridgeshire District Council                         |
| 1965/66 | T Morton, Essex County Council  | 1994 | Nigel Bell, Essex County Council  |
| 1966/67 | M J Hellier   | 1995 | Paul Maison, Bedfordshire County Council                                    |
| 1967/68 | J R N Middlebrook   | 1996 | Tony Hall, Anglia Polytechnic University                                    |
| 1968/69 | M Law   | 1997 | Dan Glading, Essex County Council, the only member to be Chair, twice       |
| 1969/70 | R J Henwood, Essex County Council   | 1998 | Steve Bateman, East Northants District Council, now Regional Treasurer      |
| 1970/71 | R J Green   | 1999 | Shaun Scrutton, Rochford District Council                                   |
| 1971/72 | D Jennings-Smith, Essex County Council  | 2000 | Ann Skippers, Chelmsford Borough Council, now RTPi Immediate Past President |
| 1972/73 | D Peace, Cambridgeshire County Council (he engraved the East of England Planning Achievement Award) | 2001 | Philippa Lowe, Mid Suffolk District Council                                 |
| 1973/74 | Dale Robinson, Private practice and Mid Essex Technical College                                     | 2002 | Ian Vipond, Colchester Borough Council                                      |
| 1974/75 | G B Noble, / J E Stafford, Essex County Council   | 2003 | Andrew Martin, Private Practice   |
| 1975/76 | J E Stafford, Essex County Council  | 2004 | Ann Hockey, Colchester Borough Council                                      |
| 1976/77 | A L Norman  | 2005 | Robert Purton, Private Practice   |
| 1977/78 | J M Shaw, Norfolk CC  | 2006 | Jackie Ward, Private Practice   |
| 1978/79 | Maurice S Pickering, Peterborough City Council  | 2007 | Nigel McCurdy, Forest Heath District Council                                |
| 1979/80 | Gareth D Gunning, Essex County Council  | 2008 | Vacant  |
| 1980/81 | Vernon W McElroy, Cambridge University  | 2009 | Vacant  |
| 1982    | J Ayton, Norfolk County Council   | 2010 | Rob Hobbs, Norwich City Council   |
| 1983    | Harry Bacon, Basildon Development Corporation   | 2011 | Peter Geraghty, Southend-on-Sea Borough Council                             |
| 1984    | Chirs Wareham, Peterborough City Council  | 2012 | Philip Godwin, North Norfolk District Council                               |
| 1985    | David Bath, Peterborough Development Corporation  |      |   |

# REGENERATION AND RENEWAL AWARDS 2011

## We won!

Well we didn't actually win the grand prix but the region didn't fair too badly.

The winner of the Regenerating Rural Communities award was **Kickstart Norfolk**.



This is a charity that loans mopeds to jobless or low-paid people in East Anglia who need transport to help them take advantage of work or training opportunities.

Based in Dereham in Norfolk the charity seeks to break the vicious circle of needing private transport to be able to get a job but needing a job to be able to afford private transport. Since it began 14 years ago Kickstart has become the largest Wheels to Work Transport loan scheme in the UK, helping 2375 applicants to secure work and 732 to attend work-based training.

The judges praised the scheme for being both efficient and cost effective. They also commended the effort Kickstart has made to expand the scheme by going into partnership with the Victory Housing Trust. One of the judges said that it is so simple a model that it is highly replicable in other rural areas.

In the design excellence section **Letchworth** Streetscene was highly commended.

This £8 million scheme, nominated by Ove Arup and Partners, transformed the public realm of two town centre streets in Letchworth. The scheme features new seating in an extended pedestrian area and space for a market and public art. The judges praised the scheme for giving the town centre a core that



will protect the viability of its high street and described it as a beacon for place making. The panel added that given the current pressure on public funding, other areas should learn from this private sector –driven project.

**High House Production Park at Purfleet**, Thurrock was the third East of England winner, being highly commended in no less than three categories:



In the Sustainability awards it was noted that this business hub for creative firms, was developed in an effort to cut energy use, boost biodiversity and enhance the general environment. The buildings use rainwater harvesting and passive infrared lighting controls to reduce energy consumption. The judges said the scheme improves local environmental quality.

Under the best use of arts and culture in regeneration category the scheme was described as being developed in response to the enforced relocation of the set and scenery workshops for the Royal Opera House (ROH) from Bow in east London to Thurrock Local partners including Thurrock Council recognised the potential to bring a major international brand into a relatively disadvantaged part of Essex and launched plans to develop a cluster of related industries at the ROH's new base. The project included building a production facility, a café and space for small businesses.

Regarding partnership working it was revealed that this project brought together seven organisations to create a creative and cultural business hub in Purfleet.

Thurrock Thames Gateway Development Corporation, the East of England Development Agency, and Capital Shopping Centres developed the site while the Arts Council worked to get political backing

The judges said the relationship the partners fostered with the Royal Opera House and National Skills Academy in persuading them to relocate to the site has given the project a significant boost.

### 2011 RTPi Planning Awards

High House Production Park is also one of the 34 schemes shortlisted for the RTPi Planning Awards. Also shortlisted are:-

Victoria Gateway at Southend, Norwich Memorial Gardens, Stubb Mill in Norfolk, Greater Norwich Joint Core Strategy and Cambridge and Peterborough Minerals and Waste Spatial Strategy.

## Planning and biodiversity - the way forward

We're almost at the end of the year, and for those involved in ecology consultancy it is typically a quieter time as creatures migrate or enter hibernation and plants die back. There are still some surveys that can be undertaken and habitat management works to be taken care of, but the slight breather in surveying does allow time for reflection on the year's events, and those facing us in the future.

Of particular significance in 2011 was the publication of the Lawton Report, Making Space for Nature: A Review of England's Wildlife Sites and Ecological Network that has now led to the England Biodiversity Strategy among other things. The Report concluded that wildlife areas in England are too small and too isolated to prevent local extinctions - natural links and corridors such as water courses and hedges have been lost or are in a poor state - and it identifies five major areas where work is needed:

1. Improving the quality of existing wildlife sites through better habitat management;
2. Making current wildlife sites bigger;
3. Improving connectivity between wildlife sites (ecological corridors and "stepping stones");
4. Creating new wildlife sites;
5. Ecologically enhancing the wider environment.

Of course, we know about the importance of looking after the Norfolk Broads, Ouse Washes and the Epping Forest. We can also applaud the creation of and the ongoing work at nature reserves like the Amwell Nature Reserve in the Lee Valley, but it's the spaces in between that need work too. Creating greater biodiversity connectivity from areas like the Dunstable and Whipnade Downs to Suffolk's 900-or-so county wildlife sites can be achieved through considered development that include wildlife-friendly habitats. A green infrastructure is a vital foundation for human health and wellbeing and ecologically well managed green spaces are essential to such an infrastructure. Wildlife-friendly green-space creation and management is difficult but we've seen its progress closer to the top of the planning agenda. We are entering a new era of determined effort to stop the losses of habitats and species once and for all.

To achieve all this we need much more well-managed green-space to meet biodiversity targets and improve the ecological health of our landscapes, especially urban ones. We realise that LPAs are finding it less feasible to adopt more green-space land for ecological management, whether associated with developments or other schemes. Such land is expensive to manage, requires specialist skills and involves very long term commitment, all of which are hard to deliver in a fast-changing, financially demanding, modern economy. Statutory bodies such as Natural England as well as the County Wildlife Trusts and other charities and lobby groups have severely restricted budgets and often have to focus their resources elsewhere, and they generally don't want to stretch themselves too far by taking on more land.

An alternative solution is to consider commercial organisations to work alongside residents, volunteers and statutory bodies. A few established environmental firms have the commitment, relevant expertise and resources at their disposal to get involved in long term habitat and open-space management, particularly where protected species are present. Betts Estates is one such organisation and has a wealth of experience in the applied ecology that is essential for the successful management of open spaces for biodiversity protection and enhancement. The way forward has to be the introduction of specialist management of open spaces to enable us to combat the loss of biodiversity. We need the input of LPAs and RTPI members to achieve this goal before it is too late: we are optimistic the future is looking better for our ecosystems, but we need to work together and pull in the same direction to realise it.

Although the Draft National Planning Policy Framework and Localism Bill are yet to be finalised, we predict that a greater consideration of ecology and management of 'open green space' will feature in future planning applications. Recommendations we anticipate and hope planners will be addressing include creating Ecological Restoration Zones, "stepping-stone" habitats to build extended wildlife networks, and better ecological management of urban green-space. But whatever the circumstances, essential to success will be the rigorous verification that ecological Conditions included with planning consents are fully and properly applied. Without that, all the best intentions will come to nought.

Above all, we have seen this year a growing realisation that the enormous value "ecosystem services" (the goods and services such as food, water, pharmaceuticals, timber, air purification, soil formation and pollination which ecosystems provide) can no longer be taken for granted and must be accounted in terms of their true worth. Expect much more on this theme in 2012 and in the years to come as biodiversity climbs to the top of the environmental agenda and stays there.

### Dr Christopher Betts

Chairman and Director of Science, Betts Estates

**BettsEstates** 



# PLANNING AID



## Update



## Planning Aid picks up a pace



Photos show delegates at the Essex Workshop

Having launched its new service in June and with Community Planning Outreach Coordinators in post, Planning Aid activities have picked up a pace over the last few months.

Three well attended volunteer events were held in **Cambridge**, Hove and Nottingham where volunteers from the East of England, East Midlands and the South East were given the opportunity to hear more about Planning Aid's priorities, forthcoming activities and volunteering opportunities and to have input into the services' future direction.

The Coordinator for the East Midlands and East of England, along with a volunteer, attended a networking meeting in **Norwich** at which the six **Broadland Frontrunners** (Neighbourhood Planning pilots, supported by the department for Communities and Local Government) were represented. Discussions took place about the kind of advice and support Planning Aid might offer in the coming months. Following a meeting with Norwich City Council (one of the Local Authority areas prioritised in the funding agreement with DCLG) joint working in the future is now being scoped. Three volunteers have been, and are continuing to support a 200 strong Residents' Association in Norfolk to help them engage with and influence local redevelopment plans.

The Coordinator for the Central South/East has been meeting with **Dacorum Borough Council** to discuss how Planning Aid can support the **Frontrunner - Grovehill Future** - with their Neighbourhood Plan. Plans for the Grovehill Future Neighbourhood Plan Launch day are underway, which will kick start engagement for the project as well as providing a fun community showcase of local groups and businesses for the local area: the event will take place on 10th December and will be supported by a team of volunteers.

On the 12th November Planning Aid staff and volunteers ran **'An Introduction to Neighbourhood Planning'** for the **Essex Community Led Planning Network** coordinated by the **Rural Community Council of Essex** at their Offices in Feering. Approximately 30 participants from across Essex attended to find out more about Neighbourhood Planning.

Volunteer Emma Woods said: "...a really interesting and current community event which gets to the heart of how communities feel they can embrace neighbourhood planning."

Participants said "Sharing experiences with a professional person on hand to answer queries with the opportunity to listen to expertise and experiences gave me a better understanding of where we are in the process"

Planning Aid nationally is finalising a new training event to add to its armoury. It is envisaged that this workshop will introduce neighbourhood planning, in the context of Localism and the NPPF; enabling Parish Councils/Neighbourhood Forums/community groups to assess and identify the skills, resources and tools that will be required to go through the neighbourhood planning process and begin to identify the local issues the Plan might seek to address. With interim pilots planned, finalised resources, along with volunteer training should see the formal launch take place early in the New Year. We are also finalising another workshop that supports the actual creation of a Neighbourhood Plan.

For further information on how Planning Aid might support your organisation or how you might benefit from volunteering, contact (East Midlands and East of England north of Cambridge) – [Rebecca.elson@planningaid.rtpi.org.uk](mailto:Rebecca.elson@planningaid.rtpi.org.uk) For enquires about Planning Aid activities and opportunities in the South East, contact [stella.meesters@planningaid.rtpi.org.uk](mailto:stella.meesters@planningaid.rtpi.org.uk)





## Young planners Update

Hello to you all for the final Young Planners Article of 2011.

We have just had a very successful APC update event with Philip Woodward of the RTPI on Wednesday 9th November at Grafton House, home of Ipswich Borough Council. The event was pushed back towards the end of the year to take into account the changes to the APC process that have been recently introduced by the RTPI.



Photos show delegates at the event in Ipswich'

There was a lot of interest in the event, particularly with the publication of the RTPI's new guidance [www.rtpi.org.uk/join\\_the\\_rtpi/assessment\\_of\\_professional\\_competence/](http://www.rtpi.org.uk/join_the_rtpi/assessment_of_professional_competence/) replacing the somewhat infamous 'blue book'. Other Young Planner's representatives and I have been involved in commenting on the re-drafting of the APC guidance and it was pleasing to receive some good initial feedback on this.

Philip's presentation was well-received detailing the revisions to the APC process that will be introduced from January 2012. This includes the following:-

- Electronic submissions;
- Reduced requirements for corroboration and covering forms;
- Quicker receipt of results with fixed dates for publication;
- Removal of the 'fail' category and revised fee schedule with resubmissions charged at £30 per section deferred but capped at a maximum of £90.00;
- Experience prior to becoming a Licentiate does not need to be logged. However the entire period you are a Licentiate does need to be included.

Together with these revisions, clear advice was provided on meeting the requirements of the 3 sections of the APC as well as the log book and necessary experience. There was also the opportunity for Licentiates to ask specific questions relating to their submissions or on the process in general

Finally information was also provided about the Planners in the Workplace (PIWP) Service from the RTPI, giving a range of support to Planners [http://www.rtpi.org.uk/member\\_services/piwp/](http://www.rtpi.org.uk/member_services/piwp/). It was considered particularly important to promote this service given the on-going difficult economic situation.

The event attracted a very good attendance of just under 30 people and I would like to thank all of those who came along, which reflects the continued importance of the APC to Young Planners. My thanks also to Rob Hobbs and Ipswich Borough Council for providing the venue.

We are also currently finalising the arrangements for the Xmas Beer and Curry Social Event, the (un)traditional festive event for East of England Young Planners that will take place in Norwich in December. Subject to print deadlines, this event may have already taken place by the time this article reaches you and further information and photos will be provided in the Spring Edition

The 2012 Young Planners' Conference has been confirmed for London in 2012. This is particularly well-timed to coincide with the hosting of the Olympics and the legacy for regeneration.

As ever, we are keen to continue events across the region, from our Norwich/Norfolk roots and if you have ideas for events or have something you would like us to promote, please do not hesitate to contact me. We are also continuing to try and promote cross-networking with a recent email circular highlighting events being put arranged by RICs and Norwich Young Professionals.

**Graham Bloomfield**

## Christmas Caption Competition



**What is Rob Young of North Norfolk DC saying to the RTPI President, Richard Summers, and Cllr Keith Johnson, during the President's visit to the area in June?**

email:[peter@hakes3334.fsnet.co.uk](mailto:peter@hakes3334.fsnet.co.uk)

# Natasha x

## Natasha reveals all!

In the first of a new series Natasha Oosedam, freelance fount of all knowledge and editor of *Planners Up Front and On Top*, answers those questions that our reader is too embarrassed to ask.

Our question for this issue is:

### “Who actually runs our region?”

Natasha says:

“The Regional Management Board runs the region and this body is advised by the Regional Activities Committee. The 2012 membership comprises:-

#### REGIONAL MANAGEMENT BOARD

Chair: Philip Godwin

Senior Vice Chair: Erica Whettingsteel

Junior Vice Chair: Peter Warner

Secretary: Richard Chillingford

Treasurer: Steve Bateman

Rep. on General Assembly: Ann Hockey

Immediate Past Chair: Peter Geraghty

#### REGIONAL ACTIVITIES COMMITTEE

##### CHARTERED MEMBERS

Steven Bainbridge The Landscape Partnership

Steve Bateman Private Practice

John Dagg Barrister

Jonathan Dixon RPS Planning & Development

Peter Hakes The Planning Legislation Update service

Robert Hobbs Ipswich BC

Ann Hockey Anglia Ruskin University

Paul Maison Private Practice

Robert Purton David Lock Associates

Shaun Scrutton Rochford DC

Erica Whettingsteel Private Practice

Tony Barker Retired

Richard Chillingford Retired

Elizabeth Chimanga Environment Agency

Peter Geraghty Southend-on-Sea BC

Nigel Gibbs Dacorum BC

Philip Godwin North Norfolk DC

Philip Isbell Mid Suffolk DC

Andrew Meddle Southend-on-Sea BC

Eiluned Morgan Private Practice

Jackie Ward Private Practice

Peter Warner Great Yarmouth BC

John Young Private Practice

#### STUDENT/LICENTIATE MEMBERS:

Simon Atha Broadland DC

Matt Breeze Cambridgeshire CC

Phil Grant Renewable Energy Systems

Jo Hobbs Norwich City Council

Editor: Tina would also like to say a public “thank-you” to two committee members who are not standing again this year – Richard Whittaker and Gemma Pannell – both of whom were very active members of the Committee.

Peter Geraghty, will be RTPI Senior Vice President in 2012.

Regional Chair for 2012 will be Phil Godwin of North Norfolk DC

## ATTENTION ALL READERS

We are going green - and trying to use your money more effectively!

Next year you will only be able to access this newsletter electronically – via the RTPI web site to be precise.

From the main RTPI web site follow the link to the East of England, then to East of England Newsletters.

Alternatively go directly to:

<http://www.rtpi.org.uk/Item/916/23/5/3>

We will of course continue to alert members when a new newsletter is available via our E Bulletin.

It is therefore vital that you let us know your up-to-date email address as soon as possible.

Contact Tina Jessup at:

[eastofengland@rtpi.org.uk](mailto:eastofengland@rtpi.org.uk)

giving your name, 1st line of your home address and your preferred email address.



# INSIDE THE BACK WITH *Natasha x*

Natasha Oosedam, Editor of 'Planners Up Front and On Top', brings you 'love, intrigue and town planning' from the 'Barbara Cartlodge of the Marshes' - Marcia Worlspittle.

## Modal, Split

His head was spinning and hurt like hell. He could smell the heat of the metal from the Land Rover but luckily there was no hint of petrol. He tried to move –but his legs appeared to be welded to the ground. With a supreme effort he turned his head a fraction and saw one of the rear wheels still revolving slowly above him. And he realised that he must have been thrown from the vehicle when it hit something: it had turned over and had pinned him to the ground. It was unbearably hot and there was no wind.

He must have passed-out then, and like in the stories, his past life seemed to flash past him like a disjointed sort of slide show:-

A white-topped purple mountain towering above vineyards,... a beautiful blond girl,... gentle rolling green fields, ...a red brick Victorian Town Hall,...huge dark green seas and swirling dense icy cold fog, blotting out the sky.

He regained consciousness and as he tried to open his eyes, the bright white glare of the sun at its zenith, hit them like a cricket bat.

He dozed again ...more images:

Horse-back, riding over slippery icy rocks,...on a mule amongst sand dunes,... people speaking French, Spanish, Arabic... a large, wet, black shape looming out of the sea - a submarine coning tower?... a cold night, rifle in hand, high on some lonely fort ramparts and above a fluttering tricolour,... the deck of an ocean liner...ice bergs, ..a girl with long glossy black hair, dancing, singing... and green eyes... then cold grey eyes, just too close together - those of a burly man. His mind went blank.

He managed to open his eyes again –this time pitch black-had he gone blind?-no, it was very cold –must be night. Then he was dimly aware of a myriad pin-pricks of light –stars, yes, but in the wrong positions? ...he must be going mad, it just did not make sense.

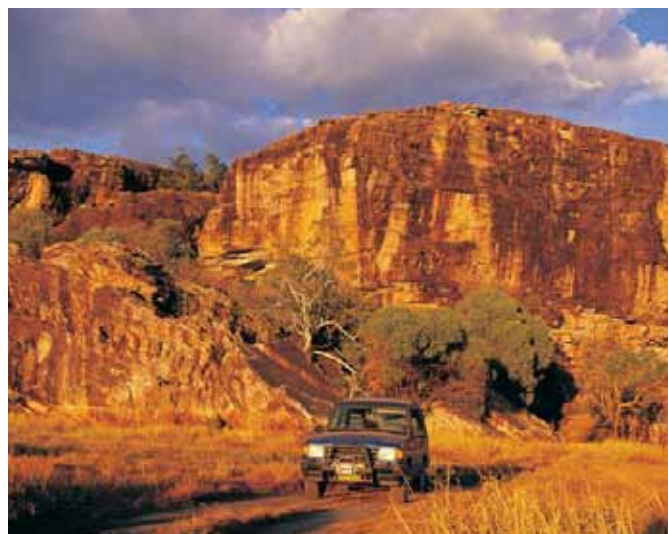
He slipped into unconsciousness again.

The heat of another day woke him, his head still hurt but his mind was a bit clearer. Yes those stars... of course they were different –he was in the southern hemisphere-in Australia that's it -it was slowly coming back to him. He managed to turn his head towards the Land Rover, and there on the ground connected to the vehicle by a black coiled cable was a hand 'mic' for the radio. If only he could get it. After a lot of struggling he realised that it was impossible...he lay back exhausted.

He would try again later.

He tried to recall how he had got there.

But first of all who was he?- Ah yes, he remembered that he had changed his name- several times in his recent past but what was it now?. Then he remembered the other lads-who were they? - called him Digger Smythe. Gradually he remembered being an officer in the Northern Territory Police Service. He had been sent out in the Land Rover to deal with an incident somewhere in



Arnhem Land where Telecom was putting in a new microwave communication system. The local aborigines had demonstrated against the workmen as they tried to erect a radio mast. He recalled that when he arrived there, he discovered that the mast was being erected on sacred land of the local tribe. He had managed, using skills developed as a young planner in Norfolk, to negotiate a compromise scheme – and everyone was happy. He had left the encampment to return to Darwin, he had not eaten or drunk enough –he must have dozed momentarily... the Land Rover must have hit something...

He drifted off to sleep again but awoke to the sound of a buzzing ..an insect?. He opened his eyes and looked up. No it wasn't an insect it was a small aeroplane. Hooray...they were looking for him...

The next time he opened his eyes he was lying in a starched bed in the 'Royal Darwin', watched over by his boss, Pongo Allerdyce (ex. RN Navy Fleet Air Arm). The ward, he noted, was thinly decorated for Christmas.

"Luckily for you, Smythe, Agent Riesling or who ever you really are, the Flying Doctor spotted you and got you back here. Only a bit of concussion and some minor scratches and bruises. We were very concerned when we lost radio contact with you –as was London!

"However, looking forward as they say, old Willerby wants me to teach you to fly, so we are transferring you to the Airwing at Marrara."

### To be continued? Who knows? Who cares?.

This story is dedicated to Miss Ethelberta Scrogings, the 92 year old beer heiress and harmonica virtuoso, of The Bungle Bungles Retirement Home in Elizabeth, South Australia, without whom it could not have been written.

**David Lock Associates are always on the look out for talented planners and urban designers.** We have been delivering value to our clients in the East of England for over 20 years by responding to changing circumstances to bring forward and implement development at all scales.



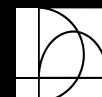
## Our skills include:

- Communication and consultation skills to engage effectively with local communities, business groups, local stakeholders, political leaders and young people. We can build the capacity required to ensure effective participation in debate, discussion and planning for growth and change.
- A long track record in the master planning and regeneration of towns, cities and regions, through robust spatial plans and urban design frameworks that guide investment in infrastructure.
- Ambition for places - their potential and opportunity - to make 'big plans' which have the ability to galvanise consensus around a vision for the future.
- Capacity to make good places through urban design and the implementation of complex plans at the local level to bring the vision to fruition.
- A trusted multi-discipline network of fellow consultants, particularly our 'Collaborate' partnership and our sister companies Integrated Transport Planning and DLA Architects Practice, to draw together complementary skills to match any project.
- A broad appreciation of the complexities faced by public and private sector clients to deliver regeneration and change, reconciling differing requirements through planning and engagement.

If you're motivated by creating sustainable developments that make a real difference to the quality of people's lives, DLA are looking for talented planners and urban designers. If you think you have the right creative skills to make a genuine contribution to our projects in Colchester, Felixstowe, Ipswich, Luton and Peterborough then please send your CV to Jo Cave: [jcave@davidlock.com](mailto:jcave@davidlock.com).

[www.davidlock.com](http://www.davidlock.com)

David Lock Associates  
Town Planning and Urban Design



© 2011 David Lock Associates. Photograph taken at Hampton, where DLA continue the planning, master planning, design and implementation of development at Peterborough's southern township

The views expressed in this newsletter do not necessarily reflect the views of the Regional Activities Committee or Management Board, the Institute or author's employer's.

**RTPI East of England Regional Office**

4 Opus House, Elm Farm Park, Great Green, Thurston, Bury St Edmunds, Suffolk, IP31 3SH

**Royal Town Planning Institute Registered Address**

41 Botolph Lane, London, EC3R 8DL

The paper used is sourced from a sustainable forest. The inks used throughout are vegetable based and bio-degradable.